



PL-LB-R-20W

9" BULKHEAD LED WALL LIGHT 20W 3000K (WARM WHITE)

Specifications

Model No.:	PL-LB-R-20W
Input Voltage:	100-277V AC
Wattage:	20W
Frequency:	50-60Hz
Color Temperature:	3000K (Warm White)
Cover:	Half Lighting
Cover Colors:	Black, White
Beam Angle:	110°
Dimmable:	No
IP Rating:	IP65 (Suitable for wet locations)
Cover Dimension:	Ø 228 mm (9 in)
Cut Size:	Base Diameter: Ø 200 mm (7.875 in) Depth: 72 mm (2.8 in)



SKU: 666561417925

Features

- The covers are available in both black and white color finishes and can be easily removed.
- Suitable for wet locations or outdoor applications with IP65 rating.
- This bulkhead light offers ingress protection from dust and moisture, and is weather resistant.
- Mostly used as a continuous light source due to its low power consumption.
- Provides a perfect look to entryways, porches, door jambs, landscaped decks, balconies, lawns, pathways, exterior stairs, etc.
- Suitable for both home and commercial use.
- The fixture has integrated long-lasting LED lights that eliminate the hassle of regular bulb replacement.
- The light source of the fixture emits a soft glow (3000K).
- Has a lifespan of at least 50,000 hours.
- Dissipates very little heat and is safe to touch.



72 mm
(2.8 in)

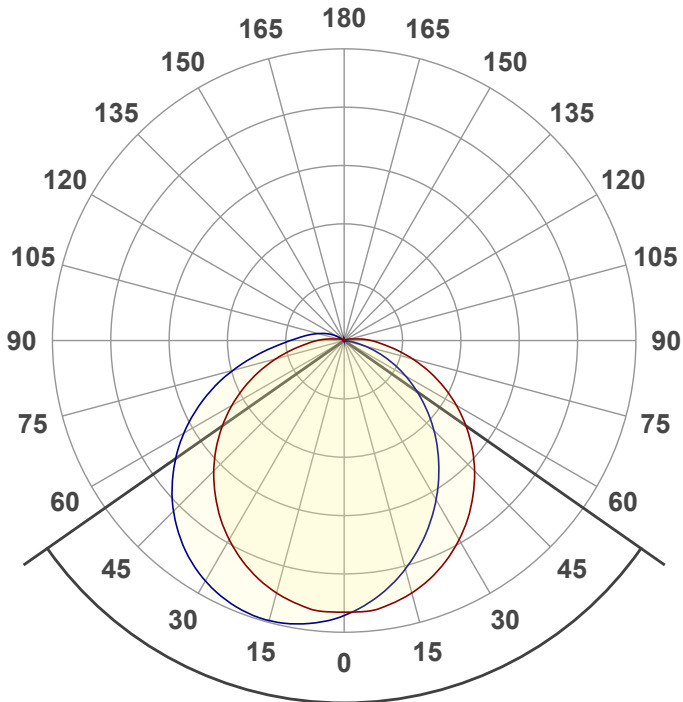


228 mm
(9 in)

200 mm
(7.875 in)

Disclaimer

The data and information contained in this specification sheet are subject to change without notice; the ratings supplied are provided based on the product manufacturer. The information contained in this specification sheet should not be considered a warranty, expressed or implied, including, but not limited to, a warranty of merchantability or fitness for a particular purpose. In no event shall LED Lights and Parts be liable for any incidental or consequential damages resulting from the use, misuse, or inability to use the product. This exclusion applies regardless of whether such damages are sought based on breach of warranty, breach of contract, negligence, strict liability in tort, or any other legal theory.



Beam angle

110°

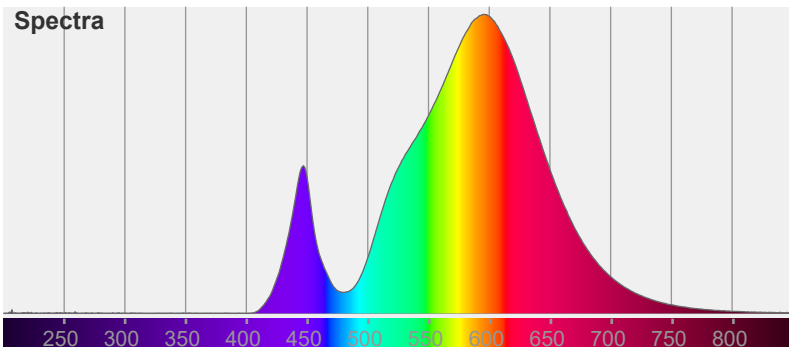


Color



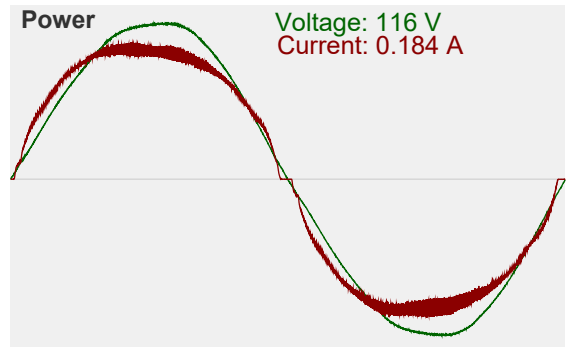
CIE1931
x: 0.441
y: 0.414

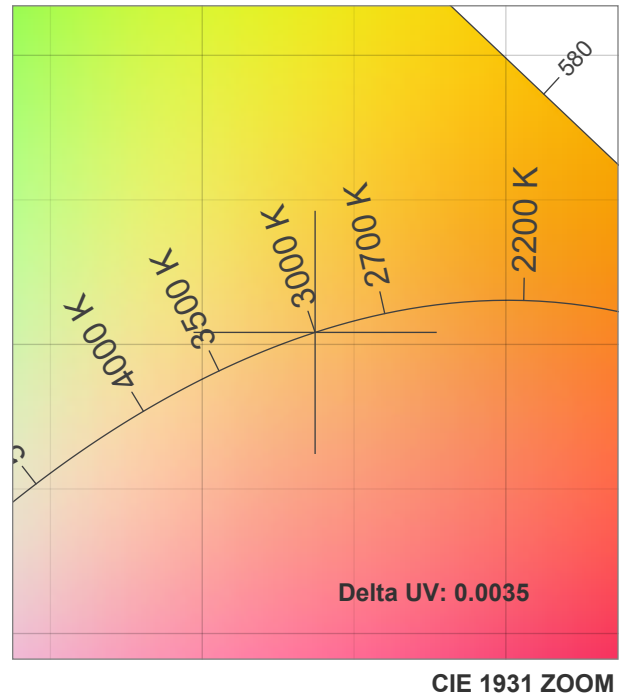
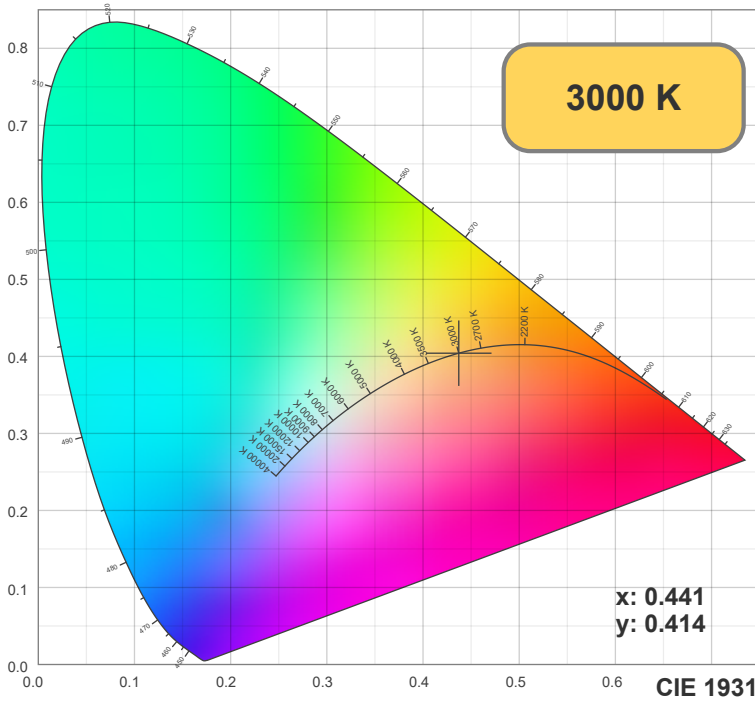
Spectra



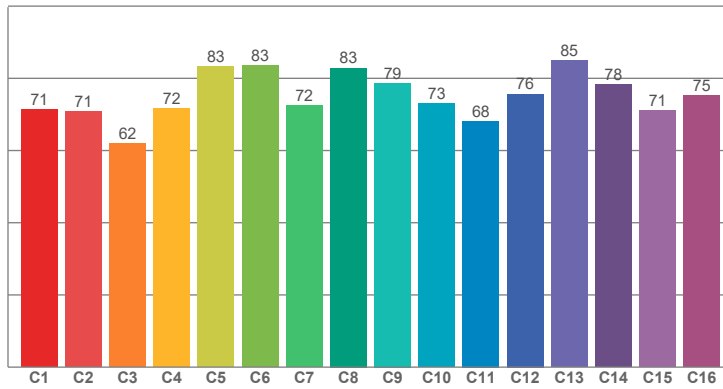
Power

Voltage: 116 V
Current: 0.184 A

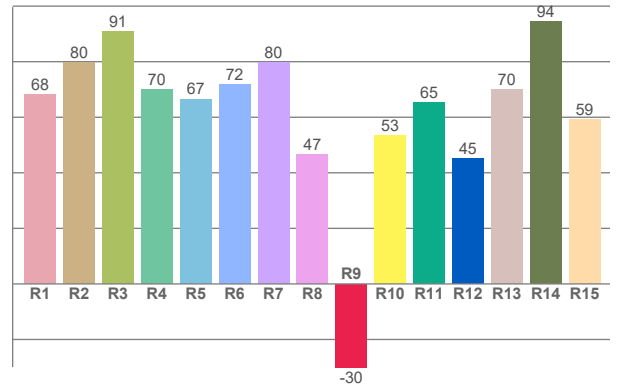




TM30: 74.7



CRI: 71.7 (R1-R8)



CRI R values, only R1-R8 are used to calculate final CRI value

R1	R2	R3	R4	R5	R6	R7	R8	R9	R10	R11	R12	R13	R14	R15
68.12	79.72	90.79	70.10	66.57	71.84	79.72	46.54	-29.95	53.36	65.34	45.02	69.87	94.48	59.22

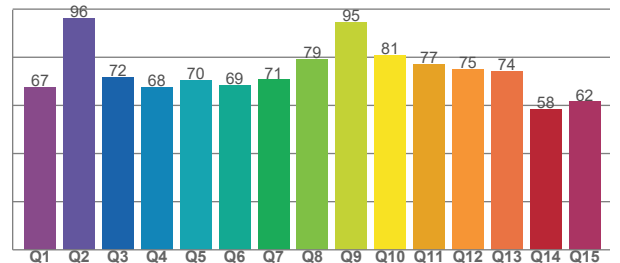
TM30 C values, 16 binned values out of total of 99 C values

C1	C2	C3	C4	C5	C6	C7	C8	C9	C10	C11	C12	C13	C14	C15	C16
71.28	70.88	61.98	71.57	83.28	83.50	72.43	82.86	78.67	72.98	68.15	75.67	84.86	78.39	71.07	75.22

CQS Q values

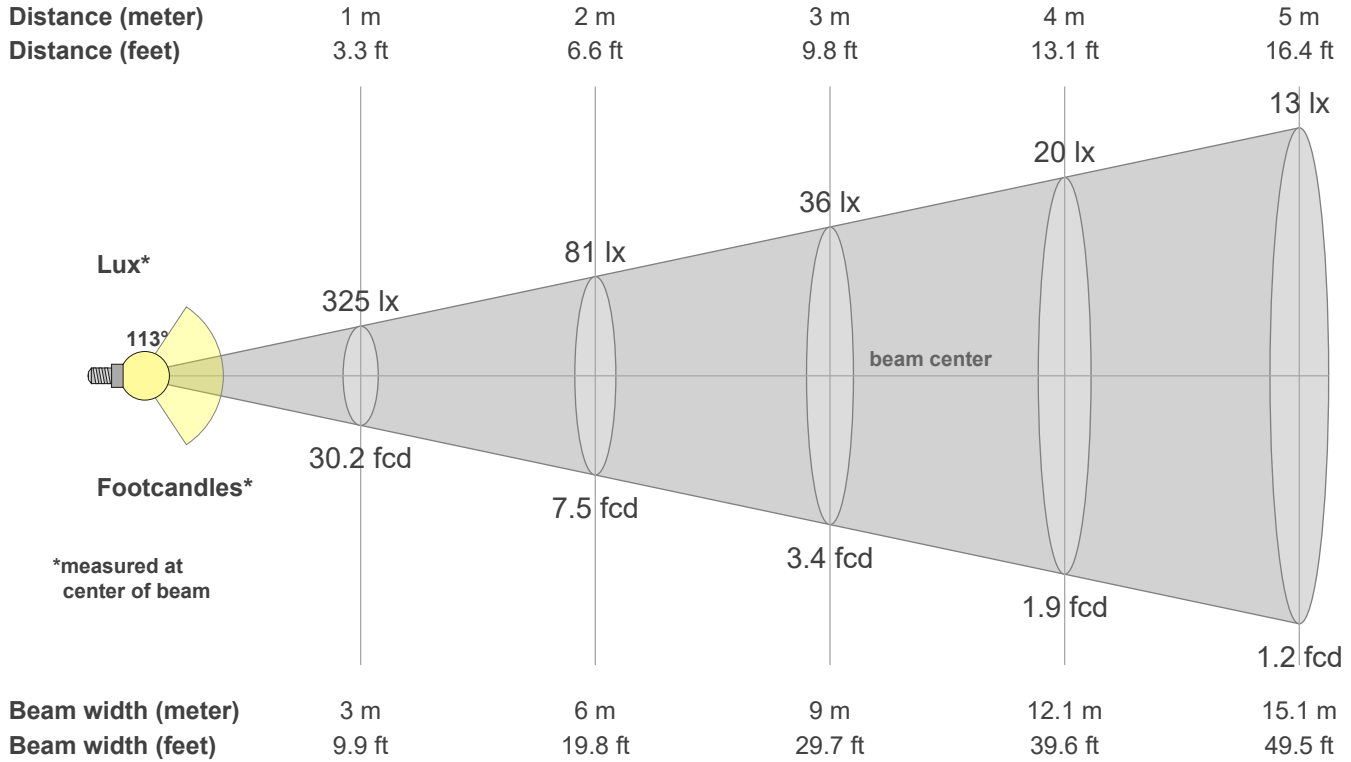
Q1	Q2	Q3	Q4	Q5	Q6	Q7	Q8	Q9	Q10	Q11	Q12	Q13	Q14	Q15
67.43	96.10	71.82	67.57	70.46	68.54	70.66	79.31	94.52	80.65	77.03	75.02	74.37	58.25	61.51

CQS: 72.2



Color parameters

CCT	CRI	CRI R9	TM30 Rf	TM30 Rg	CQS	x	y	u	v	Duv
3000 K	71.7	-30.0	74.7	95.0	72.2	0.4	0.4	0.3	0.3	0.0035



Intensities in 0° c-plane

0°	5°	10°	15°	20°	25°	30°	35°	40°	45°	50°	55°	60°	65°	70°	75°	80°	85°	90°	95°
325	323	318	310	300	288	273	257	238	219	198	177	154	131	107	84	63	45	32	21
100%	99%	98%	96%	93%	89%	84%	79%	73%	67%	61%	54%	47%	40%	33%	26%	19%	14%	10%	6%

Intensities in 90° c-plane

0°	5°	10°	15°	20°	25°	30°	35°	40°	45°	50°	55°	60°	65°	70°	75°	80°	85°	90°	95°
325	314	298	281	261	240	218	196	173	151	128	106	84	64	44	27	12	3	0	0
100%	97%	92%	86%	80%	74%	67%	60%	53%	46%	39%	33%	26%	20%	14%	8%	4%	1%	0%	0%

Intensities in 180° c-plane

0°	5°	10°	15°	20°	25°	30°	35°	40°	45°	50°	55°	60°	65°	70°	75°	80°	85°	90°	95°
325	323	318	310	300	288	273	257	238	219	198	177	154	131	107	84	63	45	32	21
100%	99%	98%	96%	93%	89%	84%	79%	73%	67%	61%	54%	47%	40%	33%	26%	19%	14%	10%	6%

Intensities in 270° c-plane

0°	5°	10°	15°	20°	25°	30°	35°	40°	45°	50°	55°	60°	65°	70°	75°	80°	85°	90°	95°
325	336	341	344	343	338	329	318	304	286	266	244	220	193	166	137	109	84	65	51
100%	103%	105%	106%	106%	104%	101%	98%	94%	88%	82%	75%	68%	60%	51%	42%	33%	26%	20%	16%

Beam angle 50%	Field angle 10%	Cutoff angle 2.5%	Intensity ratio in 120° cone	Intensity ratio in 90° cone
112.9°	178.1°	205.1°	70.3%	47.3%