



4" SQUARE LED RETROFIT TRIM 120V, 10W, 5000K (DAYLIGHT)

Specifications



Model No.:	LED-4F
Input Voltage:	120V AC
Wattage:	10W
Color Temperatures:	5000K (Daylight)
Brightness:	800Lm
Beam Angle:	95.5°
IP Rating:	IP20 (Suitable for Damp Locations)
Dimmable:	Yes
Body Color:	White
Dimensions:	Length: 127mm (5") Depth: 53mm (2") Cut Size: 102mm (4")
Certification:	ETL



SKU#: 666561417543

Features

- Retrofit/Down Light designed for standard 4-inch housing.
- Replaces 60-watt equivalent halogen bulbs.
- Low power consumption and high energy efficiency.
- Energy Star certified for its high efficiency.
- Long lifespan of over 48,000 hours.
- Suitable for ceiling lights in existing 4-inch recessed cans.
- High color rendering index (CRI>90) meeting Canadian and United States standards.
- Generates minimal heat and is safe to touch.
- Suitable for both dry and damp locations.
- Eco-friendly with RoHs certification.



Disclaimer

The data and information contained in this specification sheet are subject to change without notice; the ratings supplied are provided based on the product manufacturer. The information contained in this specification sheet should not be considered a warranty, expressed or implied, including, but not limited to, a warranty of merchantability or fitness for a particular purpose. In no event shall LED Lights and Parts be liable for any incidental or consequential damages resulting from the use, misuse, or inability to use the product. This exclusion applies regardless of whether such damages are sought based on breach of warranty, breach of contract, negligence, strict liability in tort, or any other legal theory.



LED Lights and Parts

WORLD OF LED LIGHTS

Light efficiency:

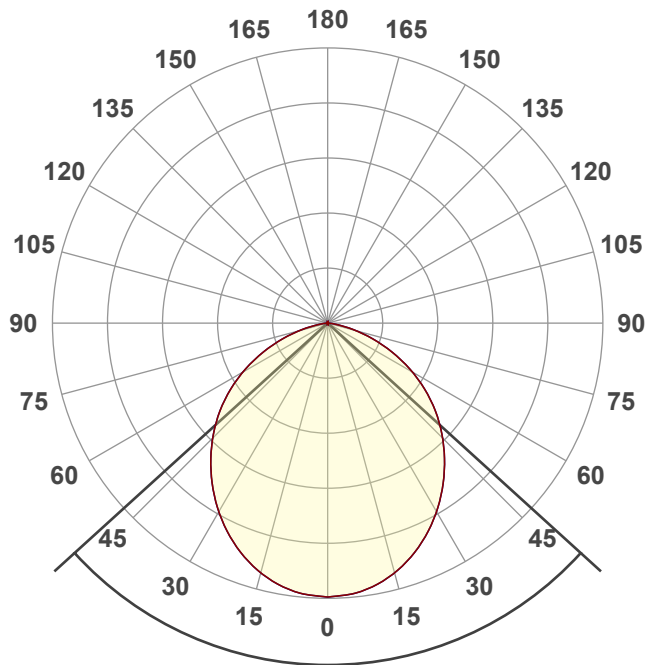
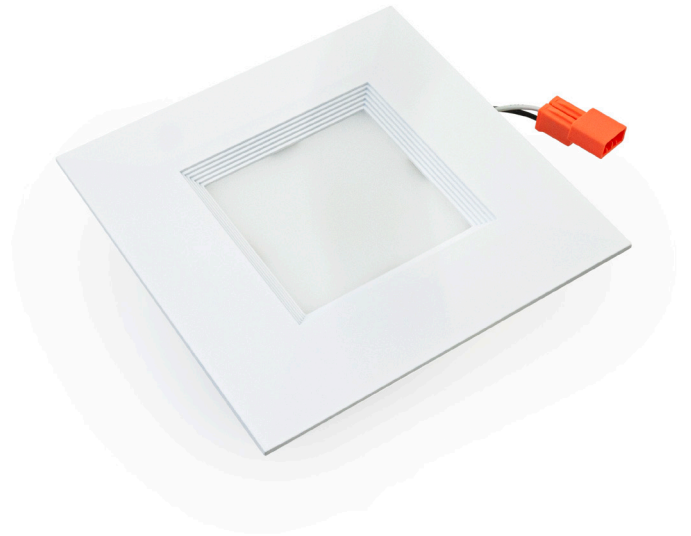
62 Lumen/Watt

Light quality:

CRI: 82.5

Color temperature:

5000 K



Beam angle

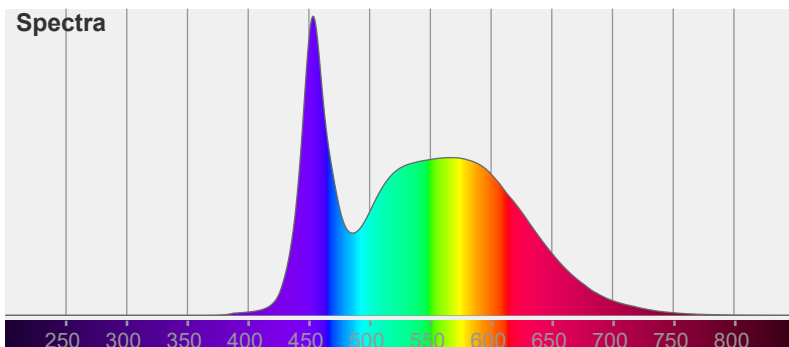
95.5°

Color



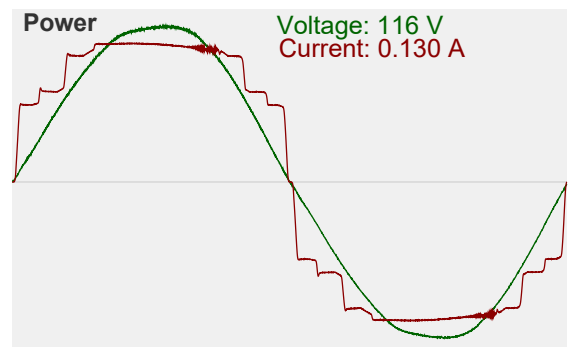
CIE1931
x: 0.319
y: 0.339

Spectra

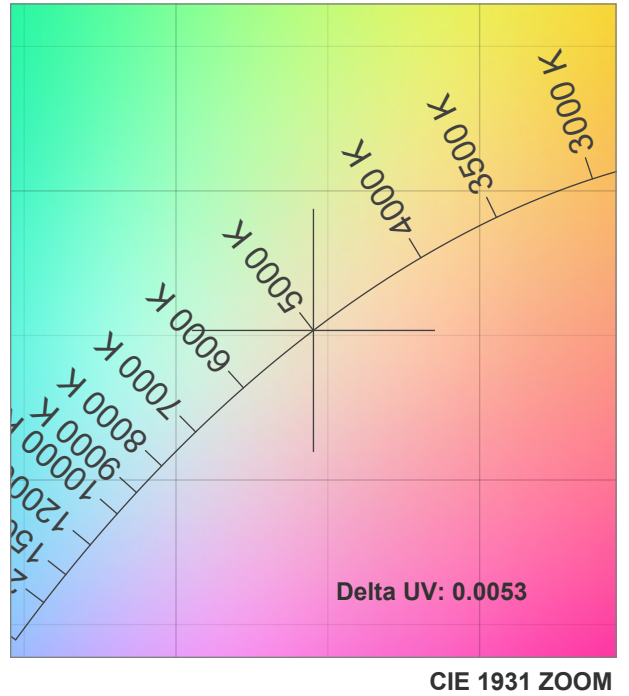
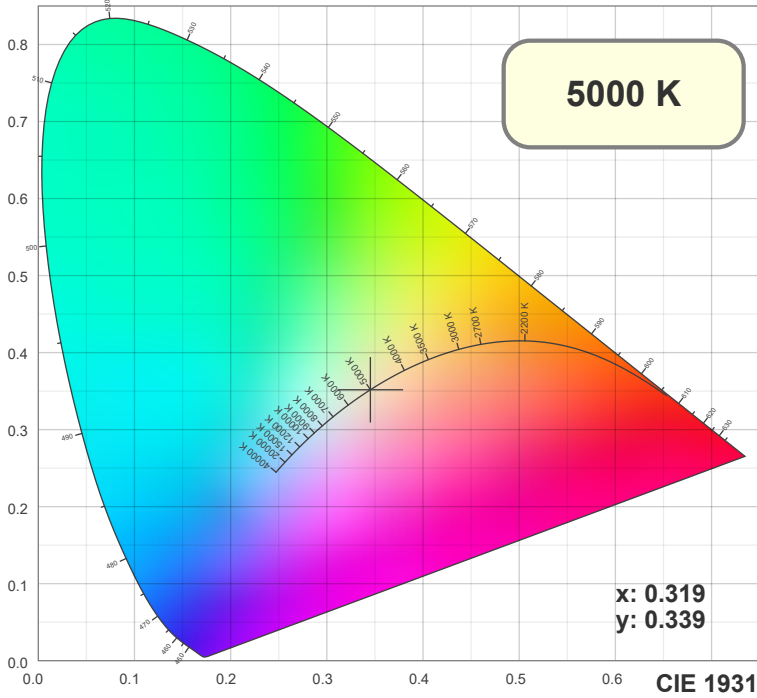


Power

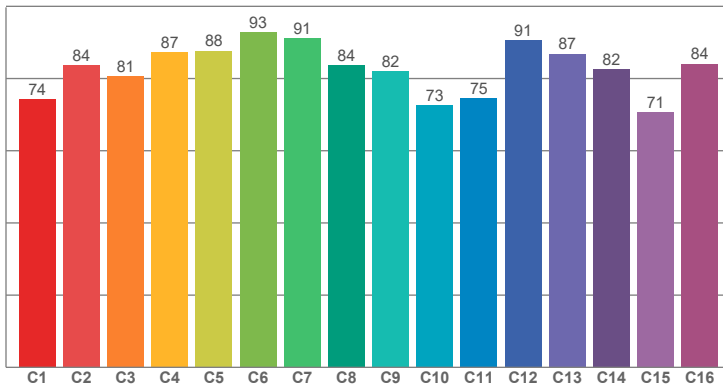
Voltage: 116 V
Current: 0.130 A



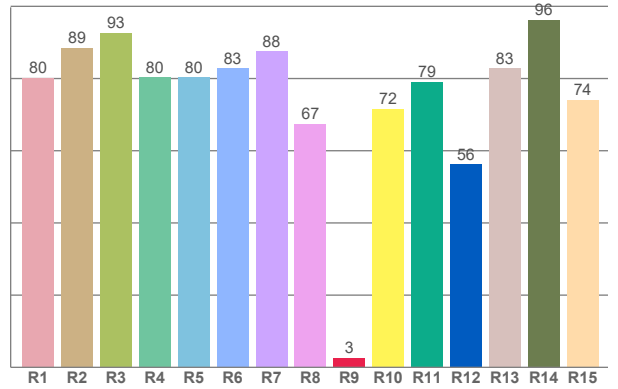
Light measurement was created using the Viso Systems - Light Inspector. www.visosystems.com



TM30: 82.6



CRI: 82.5 (R1-R8)



CRI R values, only R1-R8 are used to calculate final CRI value

R1	R2	R3	R4	R5	R6	R7	R8	R9	R10	R11	R12	R13	R14	R15
80.16	88.51	92.67	80.39	80.26	82.89	87.51	67.41	2.60	71.63	79.07	56.25	82.88	96.29	74.13

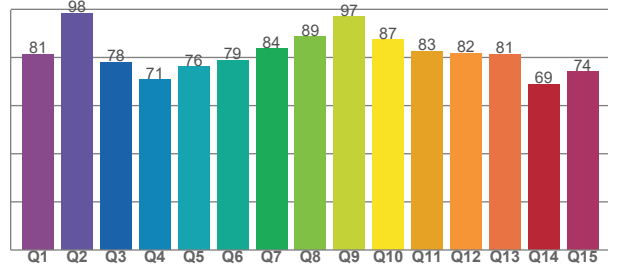
TM30 C values, 16 binned values out of total of 99 C values

C1	C2	C3	C4	C5	C6	C7	C8	C9	C10	C11	C12	C13	C14	C15	C16
74.25	83.60	80.67	87.24	87.67	92.76	91.17	83.72	82.02	72.61	74.52	90.57	86.81	82.50	70.56	84.08

CQS Q values

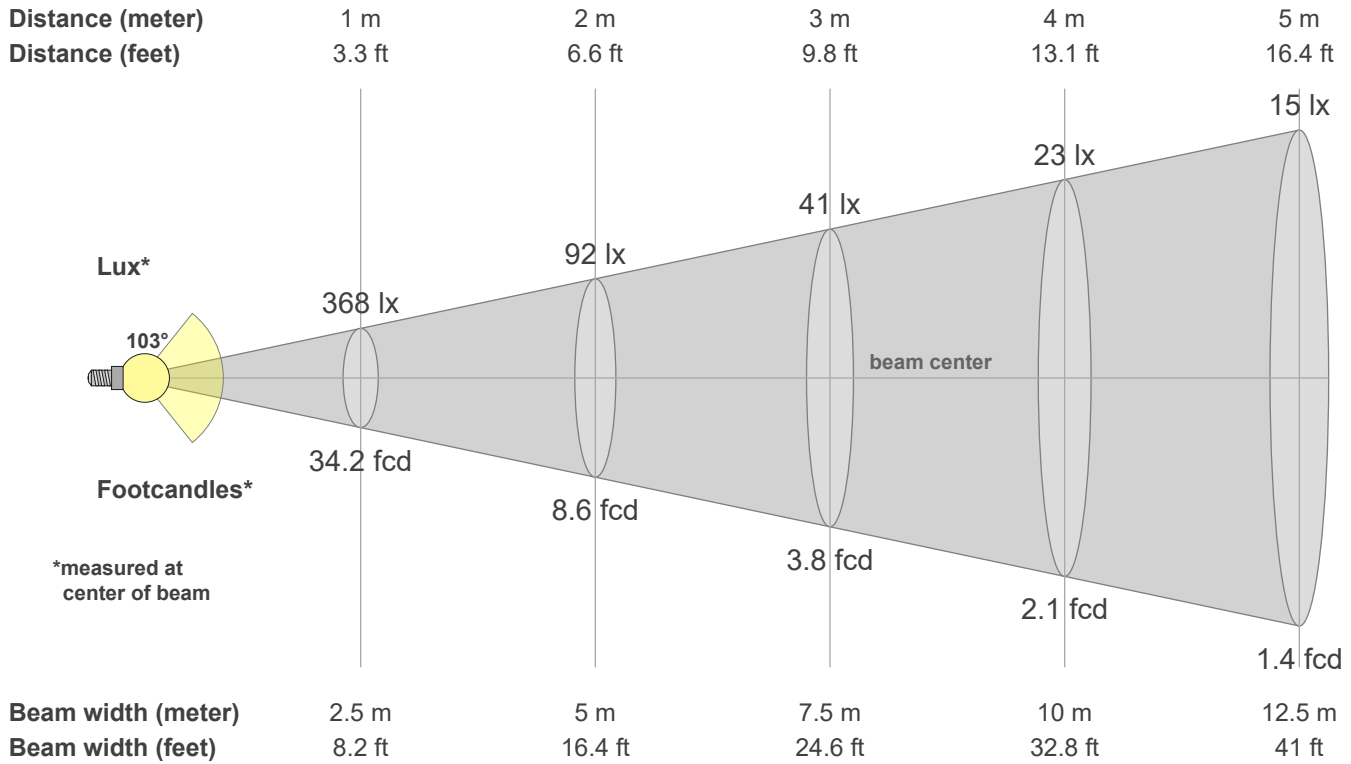
Q1	Q2	Q3	Q4	Q5	Q6	Q7	Q8	Q9	Q10	Q11	Q12	Q13	Q14	Q15
81.36	98.39	78.04	70.64	76.06	78.70	83.52	88.59	96.88	87.36	82.61	81.59	81.23	68.89	74.06

CQS: 80.1



Color parameters

CCT	CRI	CRI R9	TM30 Rf	TM30 Rg	CQS	x	y	u	v	Duv
5000 K	82.5	2.6	82.6	93.0	80.1	0.3	0.4	0.2	0.3	0.0020



Intensities in 0° c-plane

0°	5°	10°	15°	20°	25°	30°	35°	40°	45°	50°	55°	60°	65°	70°	75°	80°	85°	90°	95°
368	366	359	348	332	314	293	270	245	219	192	162	132	100	69	40	17	4	0	0
100%	99%	98%	94%	90%	85%	80%	73%	66%	59%	52%	44%	36%	27%	19%	11%	5%	1%	0%	0%

Intensities in 90° c-plane

0°	5°	10°	15°	20°	25°	30°	35°	40°	45°	50°	55°	60°	65°	70°	75°	80°	85°	90°	95°
368	366	359	348	332	314	293	270	245	219	192	162	132	100	69	40	17	4	0	0
100%	99%	98%	94%	90%	85%	80%	73%	66%	59%	52%	44%	36%	27%	19%	11%	5%	1%	0%	0%

Intensities in 180° c-plane

0°	5°	10°	15°	20°	25°	30°	35°	40°	45°	50°	55°	60°	65°	70°	75°	80°	85°	90°	95°
368	366	359	348	332	314	293	270	245	219	192	162	132	100	69	40	17	4	0	0
100%	99%	98%	94%	90%	85%	80%	73%	66%	59%	52%	44%	36%	27%	19%	11%	5%	1%	0%	0%

Intensities in 270° c-plane

0°	5°	10°	15°	20°	25°	30°	35°	40°	45°	50°	55°	60°	65°	70°	75°	80°	85°	90°	95°
368	366	359	348	332	314	293	270	245	219	192	162	132	100	69	40	17	4	0	0
100%	99%	98%	94%	90%	85%	80%	73%	66%	59%	52%	44%	36%	27%	19%	11%	5%	1%	0%	0%

Beam angle 50%	Field angle 10%	Cutoff angle 2.5%	Intensity ratio in 120° cone	Intensity ratio in 90° cone
102.6°	151.2°	165.5°	83.6%	58.5%