



LED-TM-290-DOB-15W

4" 120V LED RETROFIT ROUND TRIM 15W 3000K (WARM WHITE)

Specifications



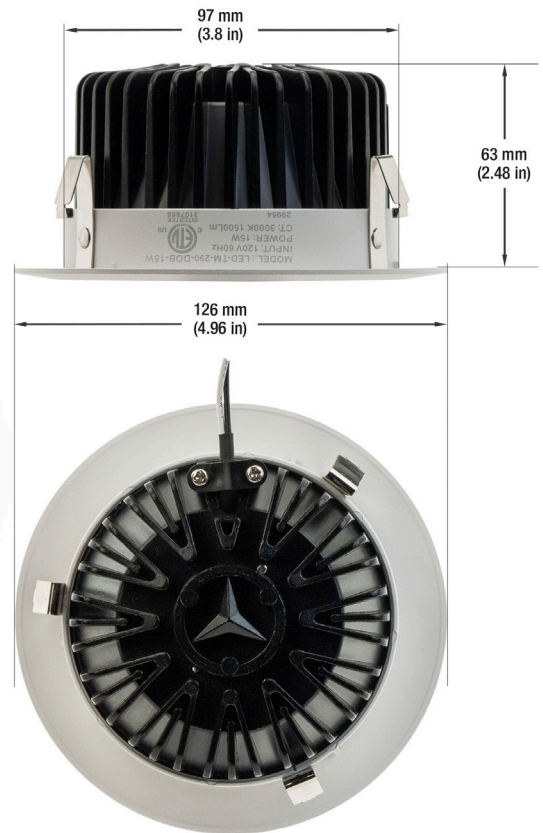
Model No.:	LED-TM-290-DOB-15W
Input Voltage:	120V
Wattage:	15W
Frequency:	60Hz
Color Temperature:	3000K (Warm White)
Brightness:	1500 Lumens
Beam Angel:	20°
Body Color:	White
Rendering Index:	CRI>90
Location Approved:	Suitable for Damp Location
Dimensions:	Ø 126 mm (4.96 in), Depth 63 mm (2.48 in)
Cut Size:	Ø 97 mm (3.8 in)
Certification:	ETL



SKU: 666561417512

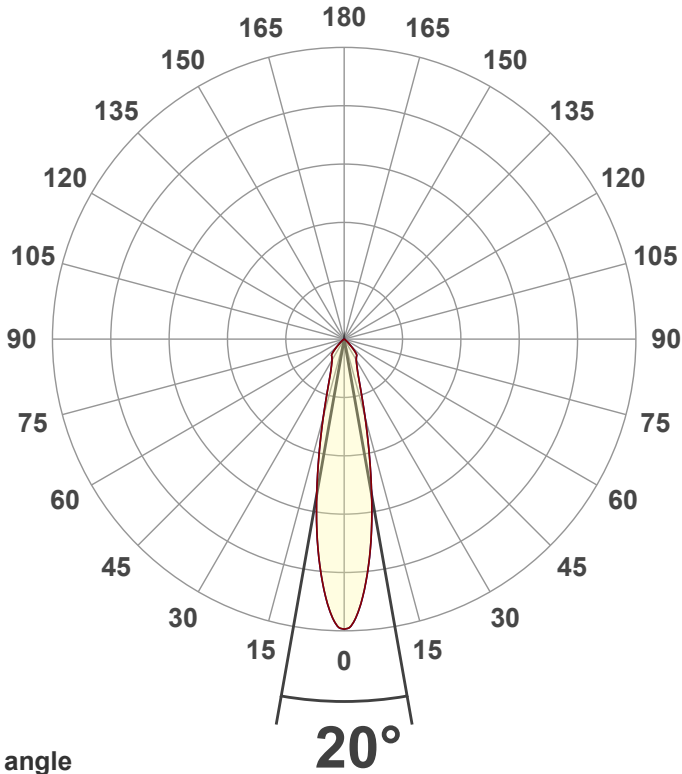
Features

- Retrofit/Down Light for standard 4-inch housing.
- One can easily change the trims of the fixture.
- We carry in 3 different trims White, Silver Nickel, and Black.
- Widely applicable for ceiling lights for an existing 4-inch can.
- Low power consumption and high energy efficiency.
- Has a lifespan of more than 35,000 hours.
- Dissipates very less heat and is safe to touch.
- Have 2 years of store warranty.



Disclaimer

The data and information contained in this specification sheet are subject to change without notice; the ratings supplied are provided based on the product manufacturer. The information contained in this specification sheet should not be considered a warranty, expressed or implied, including, but not limited to, a warranty of merchantability or fitness for a particular purpose. In no event shall LED Lights and Parts be liable for any incidental or consequential damages resulting from the use, misuse, or inability to use the product. This exclusion applies regardless of whether such damages are sought based on breach of warranty, breach of contract, negligence, strict liability in tort, or any other legal theory.



Beam angle

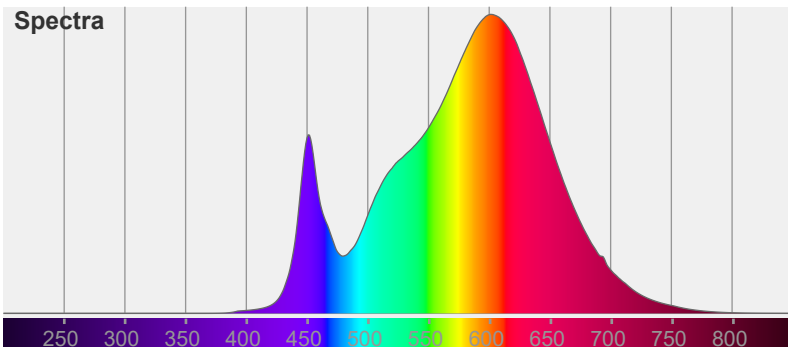


Color

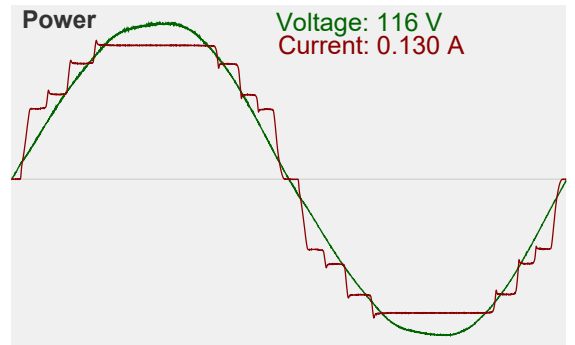


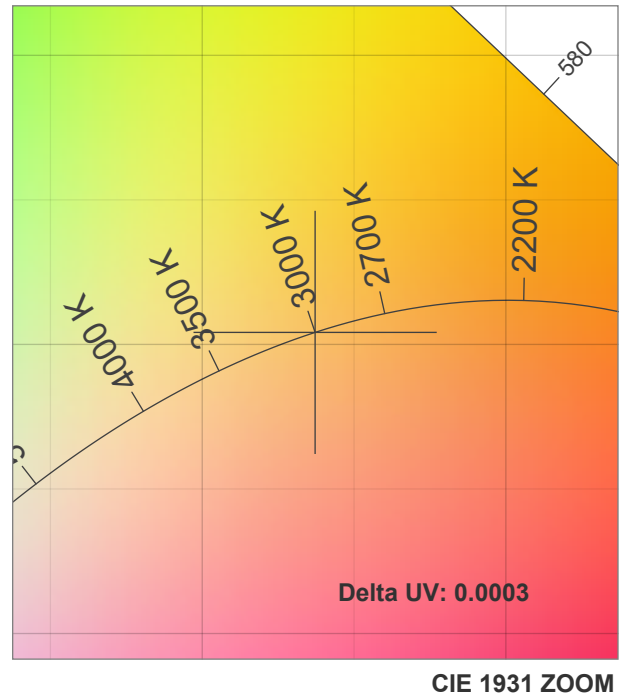
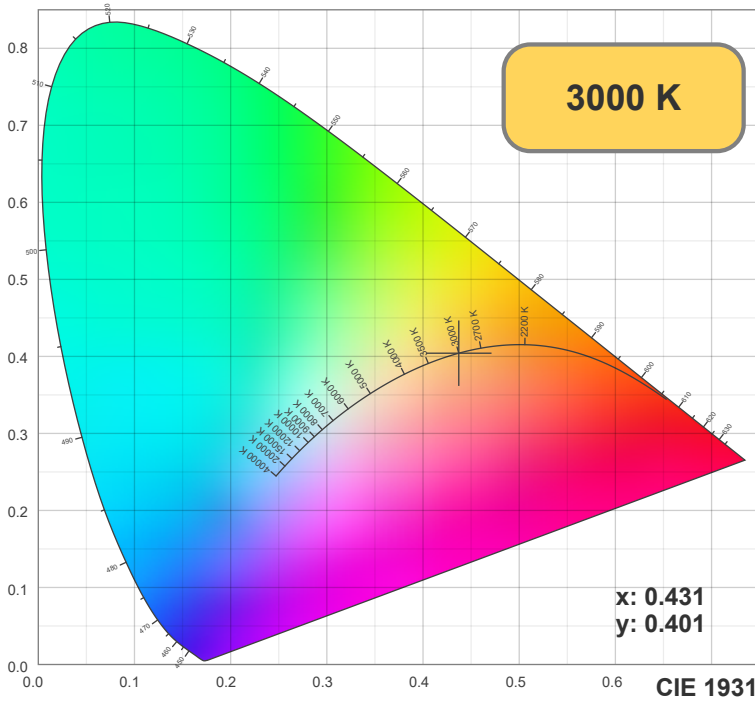
CIE1931
x: 0.431
y: 0.401

Spectra

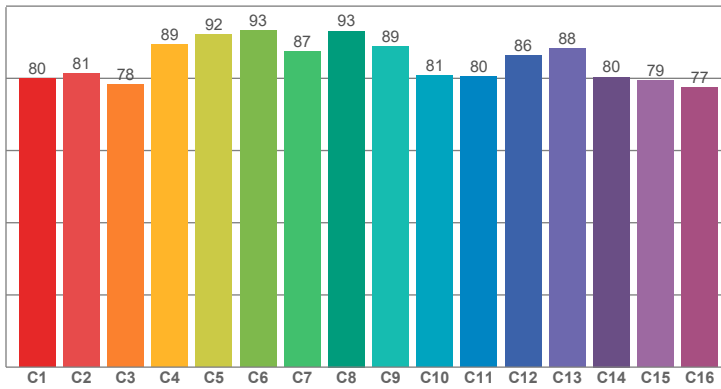


Power

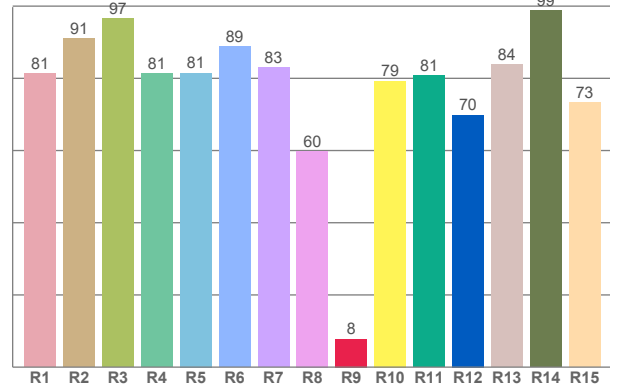




TM30: 84.8



CRI: 82.9 (R1-R8)



CRI R values, only R1-R8 are used to calculate final CRI value

R1	R2	R3	R4	R5	R6	R7	R8	R9	R10	R11	R12	R13	R14	R15
81.39	90.95	96.53	81.25	81.46	88.86	83.10	59.84	7.83	79.29	80.85	69.83	83.75	98.75	73.41

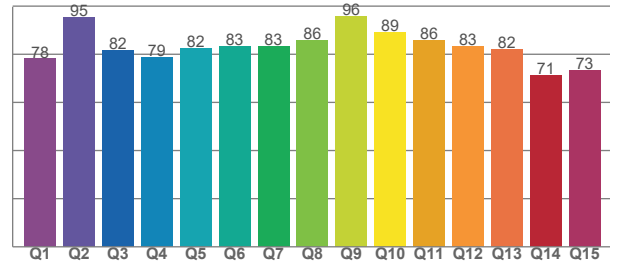
TM30 C values, 16 binned values out of total of 99 C values

C1	C2	C3	C4	C5	C6	C7	C8	C9	C10	C11	C12	C13	C14	C15	C16
80.04	81.42	78.27	89.29	92.10	93.24	87.47	93.11	88.86	80.81	80.41	86.38	88.35	80.39	79.46	77.42

CQS Q values

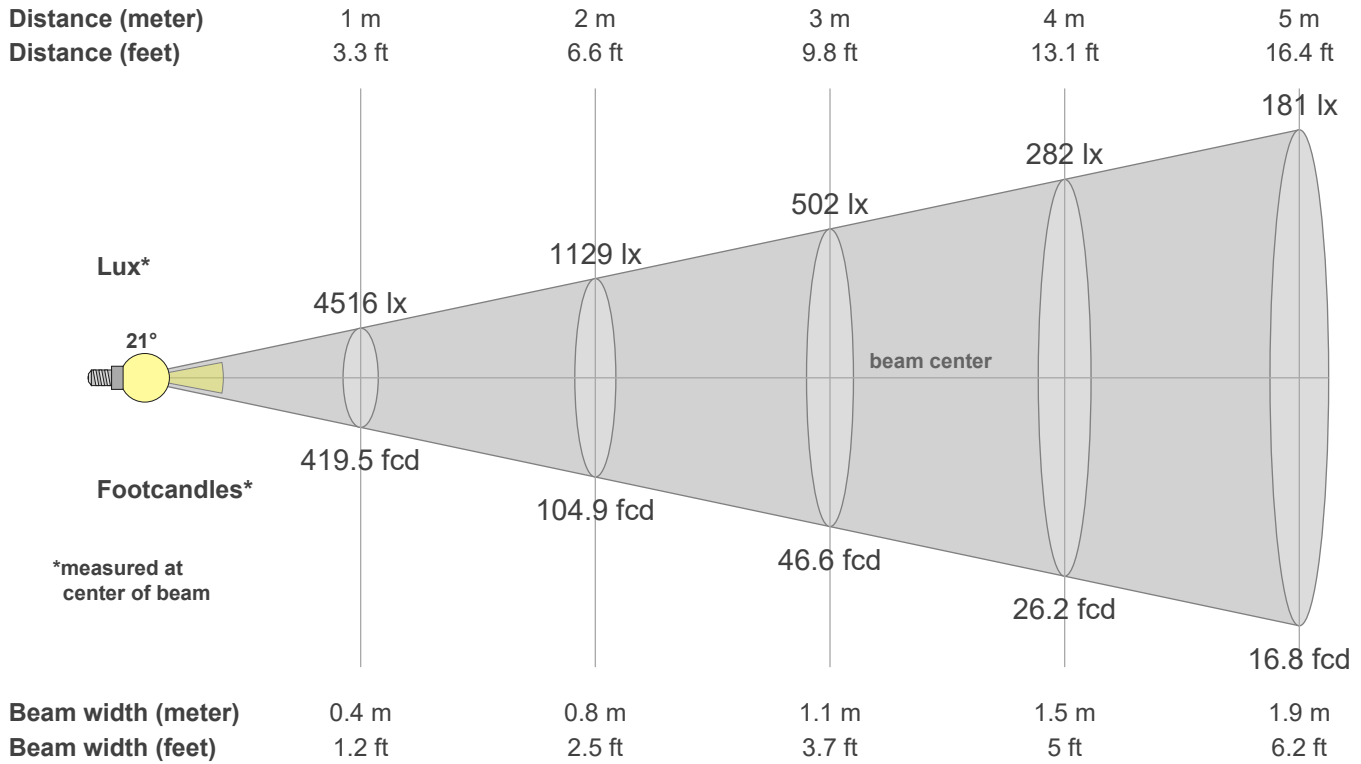
Q1	Q2	Q3	Q4	Q5	Q6	Q7	Q8	Q9	Q10	Q11	Q12	Q13	Q14	Q15
78.12	95.50	81.76	78.91	82.43	83.36	83.37	86.00	95.78	89.24	85.84	83.24	82.17	71.17	73.47

CQS: 82.0



Color parameters

CCT	CRI	CRI R9	TM30 Rf	TM30 Rg	CQS	x	y	u	v	Duv
3000 K	82.9	7.8	84.8	96.3	82.0	0.4	0.4	0.3	0.3	-0.0004



Intensities in 0° c-plane

0°	2°	4°	6°	8°	10°	12°	14°	16°	18°	20°	22°	24°	26°	28°	30°	32°	34°	36°	38°
4516	4396	4048	3579	3045	2461	1912	1448	1090	840	677	569	498	448	407	377	357	340	329	318
100%	97%	90%	79%	67%	55%	42%	32%	24%	19%	15%	13%	11%	10%	9%	8%	8%	8%	7%	7%

Intensities in 90° c-plane

0°	2°	4°	6°	8°	10°	12°	14°	16°	18°	20°	22°	24°	26°	28°	30°	32°	34°	36°	38°
4516	4396	4048	3579	3045	2461	1912	1448	1090	840	677	569	498	448	407	377	357	340	329	318
100%	97%	90%	79%	67%	55%	42%	32%	24%	19%	15%	13%	11%	10%	9%	8%	8%	8%	7%	7%

Intensities in 180° c-plane

0°	2°	4°	6°	8°	10°	12°	14°	16°	18°	20°	22°	24°	26°	28°	30°	32°	34°	36°	38°
4516	4396	4048	3579	3045	2461	1912	1448	1090	840	677	569	498	448	407	377	357	340	329	318
100%	97%	90%	79%	67%	55%	42%	32%	24%	19%	15%	13%	11%	10%	9%	8%	8%	8%	7%	7%

Intensities in 270° c-plane

0°	2°	4°	6°	8°	10°	12°	14°	16°	18°	20°	22°	24°	26°	28°	30°	32°	34°	36°	38°
4516	4396	4048	3579	3045	2461	1912	1448	1090	840	677	569	498	448	407	377	357	340	329	318
100%	97%	90%	79%	67%	55%	42%	32%	24%	19%	15%	13%	11%	10%	9%	8%	8%	8%	7%	7%

Beam angle 50%	Field angle 10%	Cutoff angle 2.5%	Intensity ratio in 120° cone	Intensity ratio in 90° cone
21.4°	51.7°	91.6°	99.6%	95.0%