



## 6" ROUND SHALLOW RECESSED IN-GROUND LIGHT 24V 15W 3000K (WARM WHITE)

### Specifications



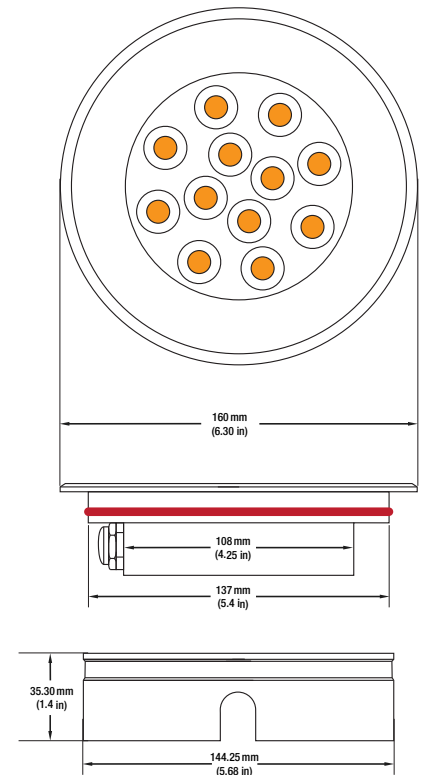
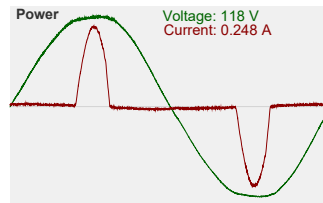
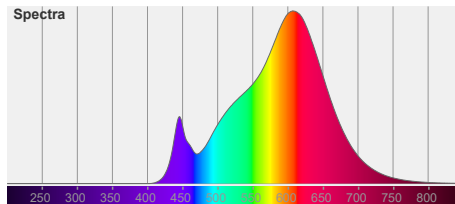
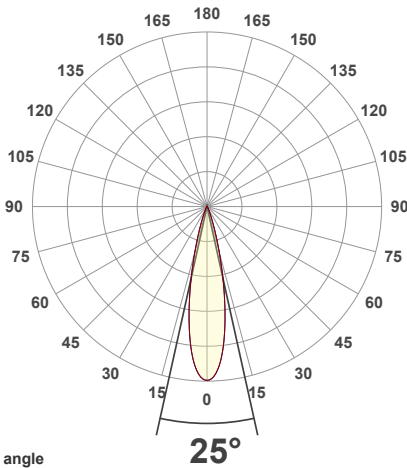
<b>Model No.:</b>	UL-1201-1500-I
<b>Input Voltage:</b>	24V DC
<b>Wattage:</b>	15W
<b>Light Source:</b>	12 LEDs
<b>Bulb Type:</b>	Integrated LED
<b>Color Temperature:</b>	3000K (Warm White)
<b>Housing Material:</b>	Die-cast Aluminum body
<b>Cap Material:</b>	Stainless Steel
<b>Beam Angle:</b>	25°
<b>Brightness:</b>	1200-1500Lm
<b>IP Rating:</b>	IP67 (Outdoor rated)
<b>Dimmable:</b>	Yes
<b>Product Content:</b>	Uplight with a 3ft wire, housing, push springs
<b>Cable Size:</b>	<b>Length:</b> 100cm (39.3in) <b>Diameter:</b> 7.5mm (0.3in) 2 x 18AWG
<b>Dimensions with housing:</b>	<b>Base Diameter:</b> 144.25mm (5.68in) <b>Diameter:</b> 160mm (6.31in) <b>Height:</b> 35.30mm (1.4in)
<b>Dimensions without housing:</b>	<b>Base Diameter:</b> 108mm (4.25in) <b>Diameter:</b> 160mm (6.31in) <b>Height:</b> 32mm (1.25in)
<b>Certification:</b>	CE



**SKU#: 666561416812**

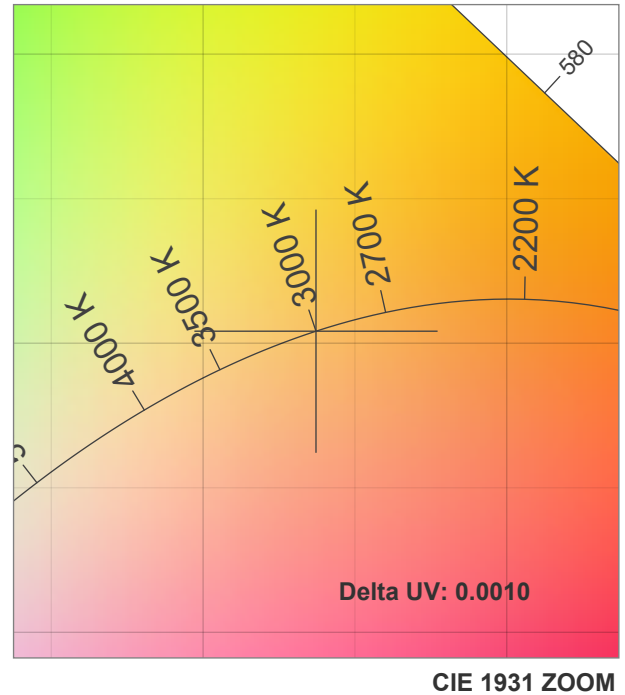
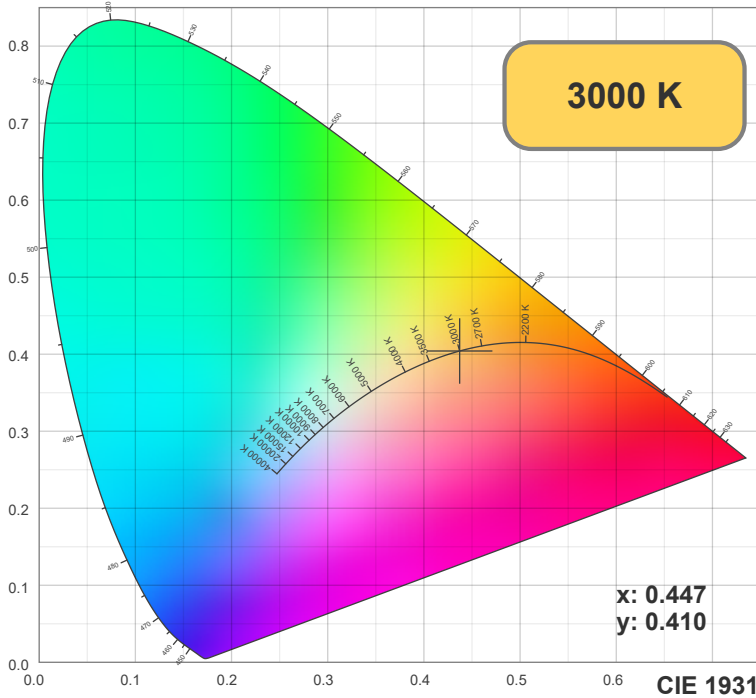
### Features

- High-quality round shallow recessed in-ground light designed for outdoor applications.
- Features 12 integrated LEDs and a warm white color temperature of 3000K for a unique ambiance or functional illumination.
- Powered by a 24V DC operating voltage with a total power consumption of 15W, making it energy-efficient.
- Made of durable die-cast aluminum body with a stainless steel cap color finish, resistant to weather and corrosion.
- Concave and convex lens type provides a unique and diffused light effect.
- IP67 rating ensures that it can withstand dust, rain, and other environmental factors.
- Dimmable, giving you full control over the light intensity.
- Comes with an uplight with a 3ft wire, housing, and push springs for easy installation.

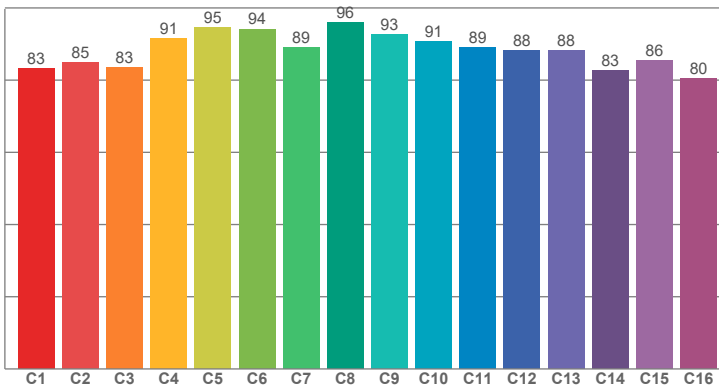


### Disclaimer

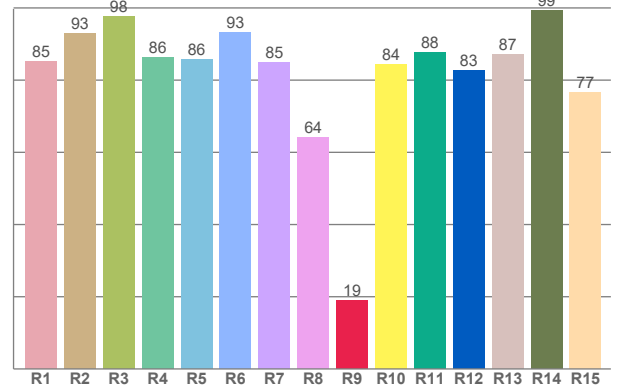
The data and information contained in this specification sheet are subject to change without notice; the ratings supplied are provided based on the product manufacturer. The information contained in this specification sheet should not be considered a warranty, expressed or implied, including, but not limited to, a warranty of merchantability or fitness for a particular purpose. In no event shall LED Lights and Parts be liable for any incidental or consequential damages resulting from the use, misuse, or inability to use the product. This exclusion applies regardless of whether such damages are sought based on breach of warranty, breach of contract, negligence, strict liability in tort, or any other legal theory.



**TM30: 88.4**



**CRI: 86.2 (R1-R8)**



**CRI R values, only R1-R8 are used to calculate final CRI value**

R1	R2	R3	R4	R5	R6	R7	R8	R9	R10	R11	R12	R13	R14	R15
85.14	93.02	97.58	86.35	85.74	93.14	84.98	64.02	18.96	84.36	87.57	82.67	87.12	99.33	76.58

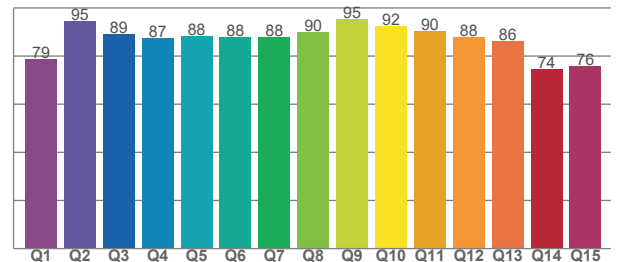
**TM30 C values, 16 binned values out of total of 99 C values**

C1	C2	C3	C4	C5	C6	C7	C8	C9	C10	C11	C12	C13	C14	C15	C16
83.12	84.97	83.45	91.44	94.50	94.16	89.12	96.03	92.74	90.75	88.95	88.16	88.30	82.74	85.54	80.48

**CQS Q values**

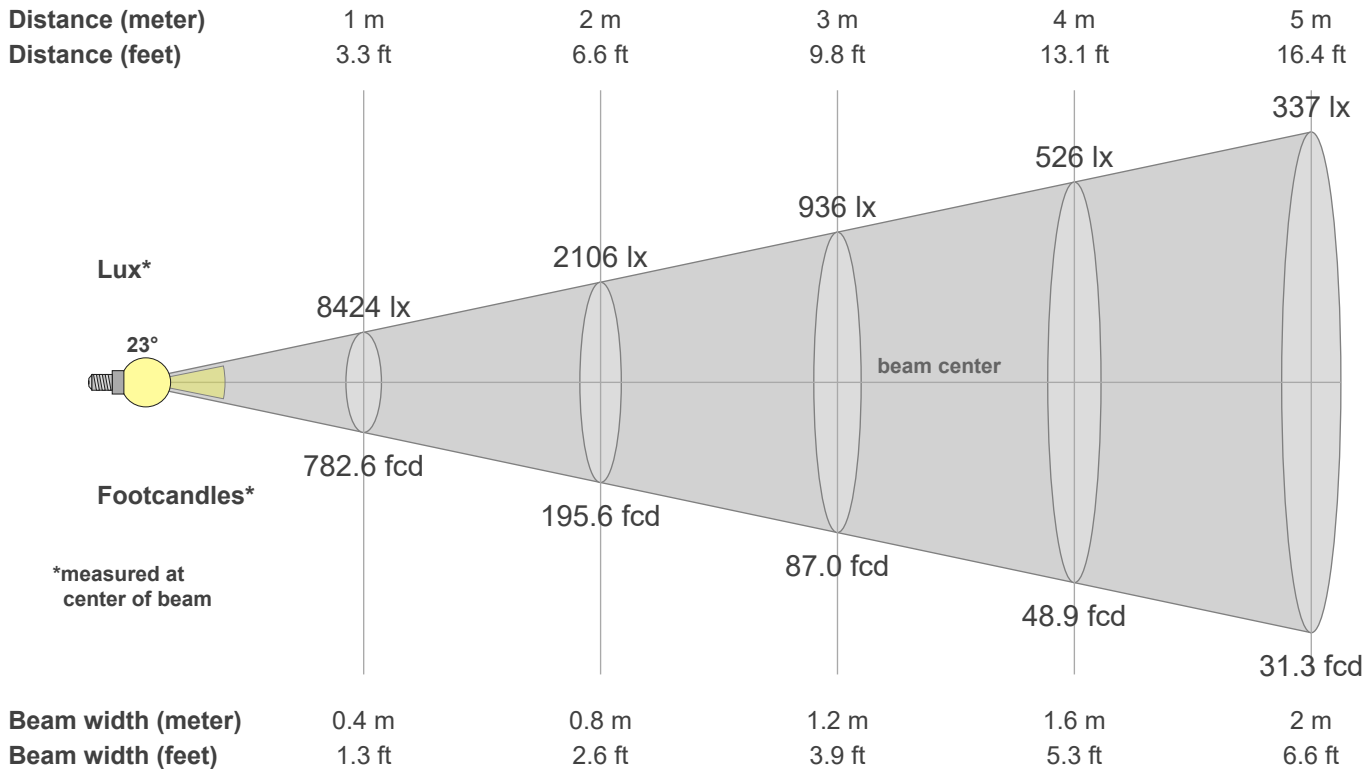
Q1	Q2	Q3	Q4	Q5	Q6	Q7	Q8	Q9	Q10	Q11	Q12	Q13	Q14	Q15
78.84	94.67	88.95	87.49	88.16	87.87	87.85	89.77	95.33	92.28	90.46	88.02	86.22	74.49	75.93

**CQS: 85.6**



### Color parameters

CCT	CRI	CRI R9	TM30 Rf	TM30 Rg	CQS	x	y	u	v	Duv
3000 K	86.2	19.0	88.4	97.0	85.6	0.4	0.4	0.3	0.3	0.0011



### Intensities in 0° c-plane

0°	1°	2°	3°	4°	5°	6°	7°	8°	9°	10°	11°	12°	13°	14°	15°	16°	17°	18°	19°
8424	8393	8287	8106	7848	7516	7112	6644	6124	5569	4994	4410	3829	3270	2751	2282	1865	1508	1208	959
100%	100%	98%	96%	93%	89%	84%	79%	73%	66%	59%	52%	45%	39%	33%	27%	22%	18%	14%	11%

### Intensities in 90° c-plane

0°	1°	2°	3°	4°	5°	6°	7°	8°	9°	10°	11°	12°	13°	14°	15°	16°	17°	18°	19°
8424	8393	8287	8106	7848	7516	7112	6644	6124	5569	4994	4410	3829	3270	2751	2282	1865	1508	1208	959
100%	100%	98%	96%	93%	89%	84%	79%	73%	66%	59%	52%	45%	39%	33%	27%	22%	18%	14%	11%

### Intensities in 180° c-plane

0°	1°	2°	3°	4°	5°	6°	7°	8°	9°	10°	11°	12°	13°	14°	15°	16°	17°	18°	19°
8424	8393	8287	8106	7848	7516	7112	6644	6124	5569	4994	4410	3829	3270	2751	2282	1865	1508	1208	959
100%	100%	98%	96%	93%	89%	84%	79%	73%	66%	59%	52%	45%	39%	33%	27%	22%	18%	14%	11%

### Intensities in 270° c-plane

0°	1°	2°	3°	4°	5°	6°	7°	8°	9°	10°	11°	12°	13°	14°	15°	16°	17°	18°	19°
8424	8393	8287	8106	7848	7516	7112	6644	6124	5569	4994	4410	3829	3270	2751	2282	1865	1508	1208	959
100%	100%	98%	96%	93%	89%	84%	79%	73%	66%	59%	52%	45%	39%	33%	27%	22%	18%	14%	11%

Beam angle 50%	Field angle 10%	Cutoff angle 2.5%	Intensity ratio in 120° cone	Intensity ratio in 90° cone
22.7°	39.1°	52.4°	99.4%	97.9%