



## 3" ADJUSTABLE BEAM DIRECTION IN-GROUND LIGHT 12-24V DC 8W 3000K (WARM WHITE)

### Specifications



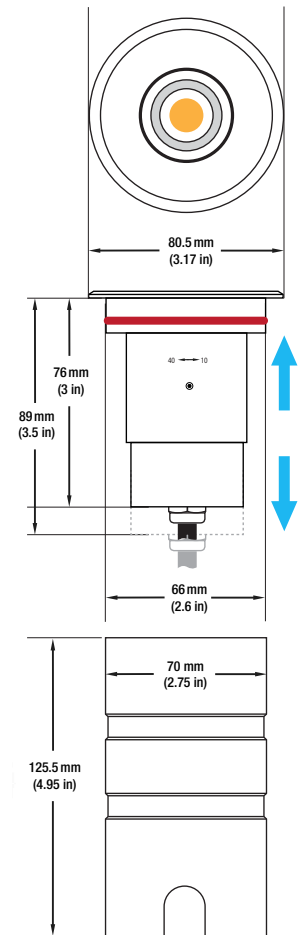
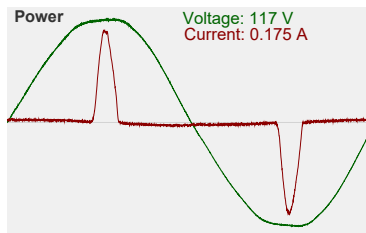
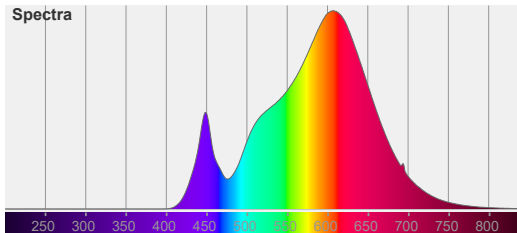
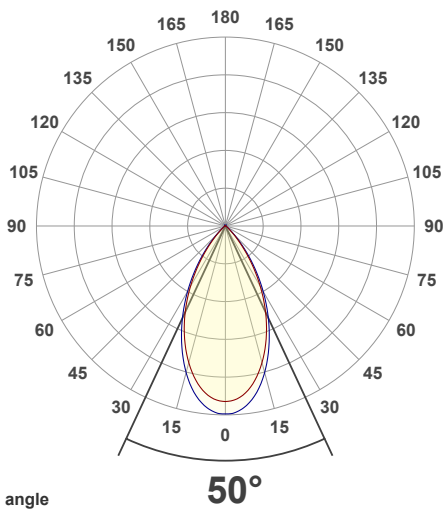
<b>Model No.:</b>	UL-8W-COB-0800-J
<b>Input Voltage:</b>	12-24V DC
<b>Wattage:</b>	8W
<b>Light Source:</b>	1x8W COB
<b>Bulb Type:</b>	Integrated COB LED
<b>Color Temperature:</b>	3000K (Warm White)
<b>Housing Material:</b>	Die-cast Aluminum body
<b>Beam Angle:</b>	15° to 50° (Adjustable beam direction)
<b>Cap Material:</b>	Stainless Steel
<b>IP Rating:</b>	IP67 (Outdoor rated)
<b>Lens:</b>	Zoomable Lens
<b>Dimmable:</b>	Yes
<b>Cable Size:</b>	<b>Length:</b> 100cm (39.3in) <b>Diameter:</b> 7.5mm (0.3in) 18AWG
<b>Dimensions with housing:</b>	<b>Base Diameter:</b> 70mm (2.75in) <b>Diameter:</b> 80.5mm (3.17in) <b>Height:</b> 125.5mm (4.95in)
<b>Dimensions without housing:</b>	<b>Diameter:</b> 80.5mm (3.17in) <b>Height:</b> 89mm (3.5in)
<b>Certification:</b>	CE



**SKU#: 666561416805**

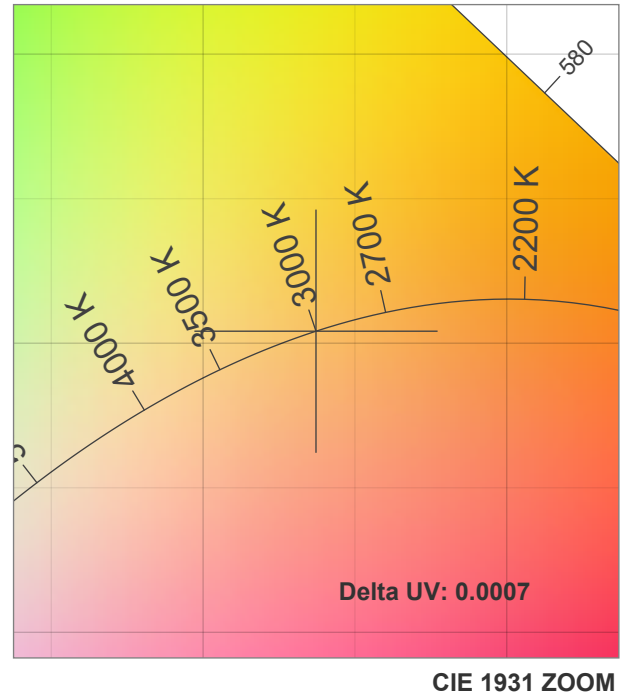
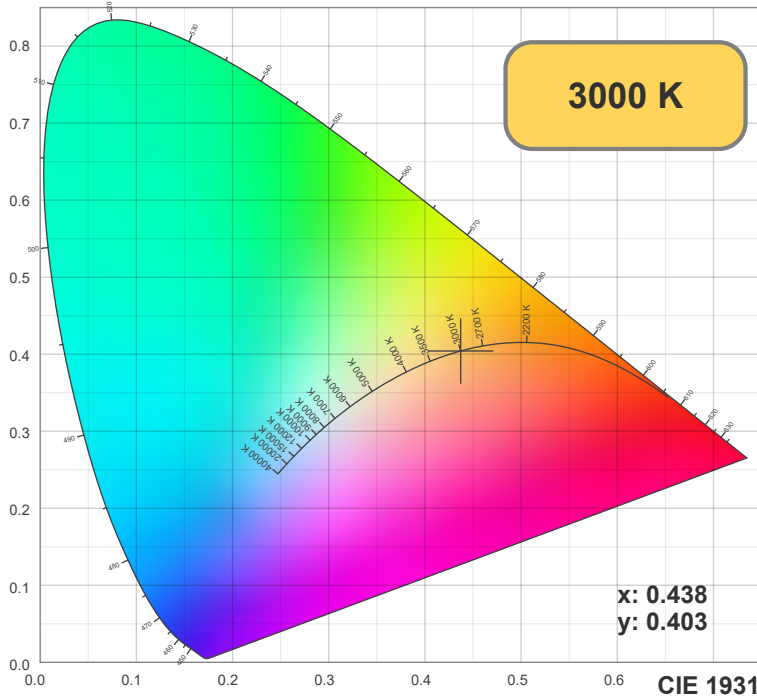
### Features

- Designed for outdoor applications with a 12-24V DC power supply.
- Features a powerful 1x8W COB LED bulb that produces warm white (3000K) light.
- Sturdy die-cast aluminum body with a cap color finish of 316 stainless steel for durability and longevity.
- Adjustable beam direction from 15° to 50° with a zoomable lens.
- Rated IP67 for use in all weather conditions and resilience to being stepped upon.
- Comes with 3 feet of wire with housing for easy installation.
- Dimmable for adjusting brightness to desired level.

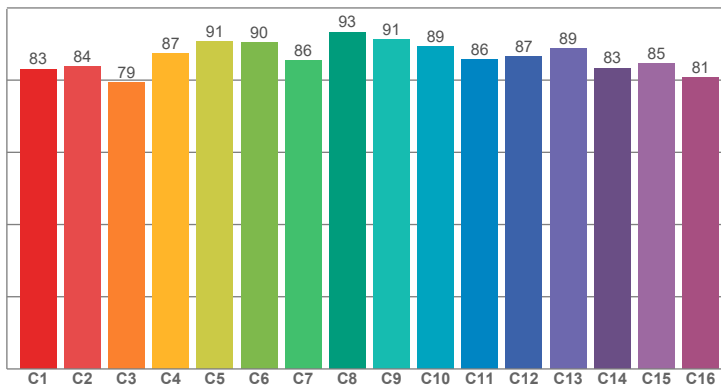


### Disclaimer

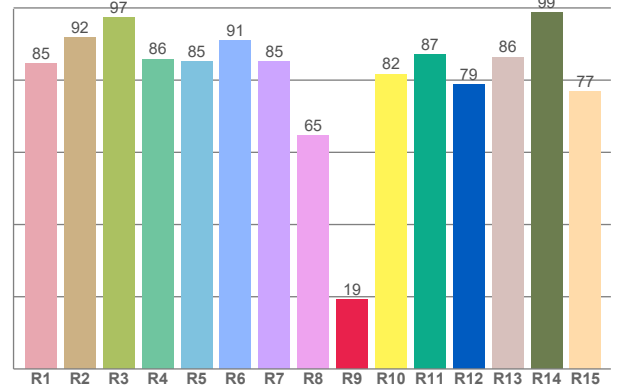
The data and information contained in this specification sheet are subject to change without notice; the ratings supplied are provided based on the product manufacturer. The information contained in this specification sheet should not be considered a warranty, expressed or implied, including, but not limited to, a warranty of merchantability or fitness for a particular purpose. In no event shall LED Lights and Parts be liable for any incidental or consequential damages resulting from the use, misuse, or inability to use the product. This exclusion applies regardless of whether such damages are sought based on breach of warranty, breach of contract, negligence, strict liability in tort, or any other legal theory.



TM30: 86.4



CRI: 85.7 (R1-R8)



CRI R values, only R1-R8 are used to calculate final CRI value

R1	R2	R3	R4	R5	R6	R7	R8	R9	R10	R11	R12	R13	R14	R15
84.68	91.85	97.42	85.86	85.05	91.03	85.07	64.64	19.27	81.71	87.10	78.88	86.39	98.80	76.83

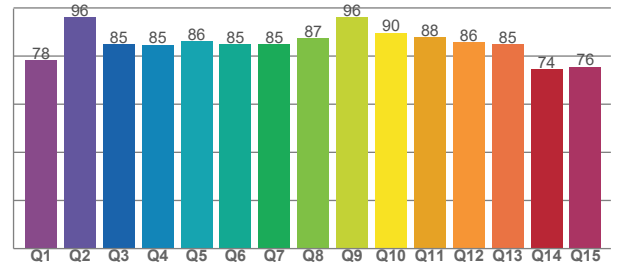
TM30 C values, 16 binned values out of total of 99 C values

C1	C2	C3	C4	C5	C6	C7	C8	C9	C10	C11	C12	C13	C14	C15	C16
83.07	83.70	79.37	87.37	90.75	90.44	85.52	93.33	91.29	89.32	85.63	86.56	88.84	83.35	84.59	80.67

CQS Q values

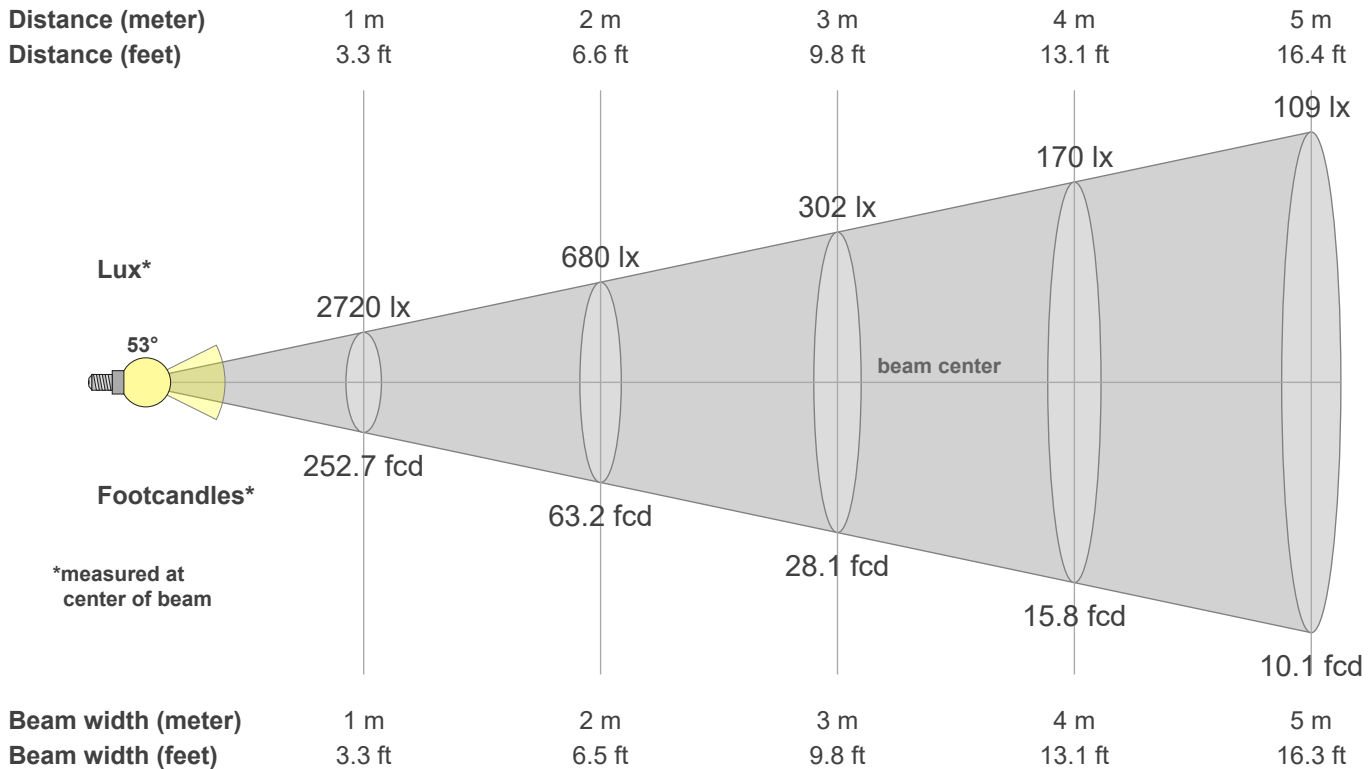
Q1	Q2	Q3	Q4	Q5	Q6	Q7	Q8	Q9	Q10	Q11	Q12	Q13	Q14	Q15
78.33	96.06	84.95	84.72	86.32	85.12	85.02	87.47	96.07	89.73	87.85	85.73	84.92	74.47	75.57

CQS: 84.2



## Color parameters

CCT	CRI	CRI R9	TM30 Rf	TM30 Rg	CQS	x	y	u	v	Duv
3000 K	85.7	19.3	86.4	98.9	84.2	0.4	0.4	0.3	0.3	-0.0007



### Intensities in 0° c-plane

0°	2°	4°	6°	8°	10°	12°	14°	16°	18°	20°	22°	24°	26°	28°	30°	32°	34°	36°	38°
2720	2618	2590	2543	2476	2391	2291	2178	2055	1925	1787	1644	1498	1349	1197	1045	897	753	616	489
100%	96%	95%	93%	91%	88%	84%	80%	76%	71%	66%	60%	55%	50%	44%	38%	33%	28%	23%	18%

### Intensities in 90° c-plane

0°	2°	4°	6°	8°	10°	12°	14°	16°	18°	20°	22°	24°	26°	28°	30°	32°	34°	36°	38°
2720	2809	2779	2729	2658	2569	2461	2338	2202	2058	1909	1755	1600	1444	1287	1132	979	832	691	558
100%	103%	102%	100%	98%	94%	90%	86%	81%	76%	70%	65%	59%	53%	47%	42%	36%	31%	25%	21%

### Intensities in 180° c-plane

0°	2°	4°	6°	8°	10°	12°	14°	16°	18°	20°	22°	24°	26°	28°	30°	32°	34°	36°	38°
2720	2618	2590	2543	2476	2391	2291	2178	2055	1925	1787	1644	1498	1349	1197	1045	897	753	616	489
100%	96%	95%	93%	91%	88%	84%	80%	76%	71%	66%	60%	55%	50%	44%	38%	33%	28%	23%	18%

### Intensities in 270° c-plane

0°	2°	4°	6°	8°	10°	12°	14°	16°	18°	20°	22°	24°	26°	28°	30°	32°	34°	36°	38°
2720	2809	2779	2729	2658	2569	2461	2338	2202	2058	1909	1755	1600	1444	1287	1132	979	832	691	558
100%	103%	102%	100%	98%	94%	90%	86%	81%	76%	70%	65%	59%	53%	47%	42%	36%	31%	25%	21%

Beam angle 50%	Field angle 10%	Cutoff angle 2.5%	Intensity ratio in 120° cone	Intensity ratio in 90° cone
52.9°	85.4°	102.0°	98.7%	94.7%