

VEROBOARD®

4" Flat LED Panel Light

SPECIFICATIONS

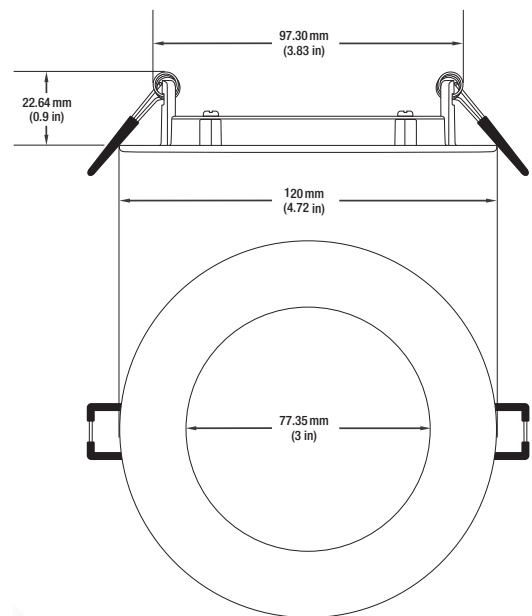


Model No.	Z4C-9
Input Voltage	120V AC
Wattage	9W
Frequency	50/60Hz
Colour Temperatures	3CCT Selectable Colour Temperatures (3000K-4000K-5000K)
Available Trim Colour	Black, Brushed Nickel
Brightness	589-673 Lumens
Beam Angle	110°
Dimming	100 – 10% (Triac Dimming)
Rendering Index	CRI>90
IP Rating	IP20 (Indoor use only)
Location Approved	Damp Location
Certifications	ETL/cUL/Energy Star

FEATURES



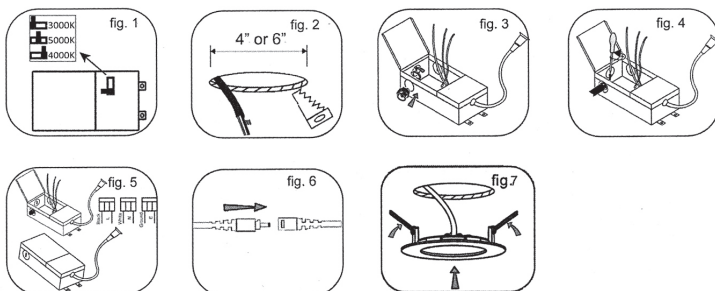
- This downlight works in various indoor applications. It has universal ceiling applications.
- Recessed lighting is suitable for both dry and damp environments with its Ingress Protection rating of IP20.
- The temperature of the light can be adjusted to the desired application from the junction box DIP switch.
- Selectable color Temperature option 3000K-4000K-5000K from the junction box.
- No additional LED driver is needed.
- Trim is available in different Colors (White, Black, Brushed Nickel).
- Well suited for both residential and commercial indoor spaces.



Available Trim Colour
(Sold Separately)

Z4C-9-BK
SKU: 666561415242

Z4C-9-BN
SKU: 666561415259



Disclaimer:

The data and information contained in this specification sheet are subject to change without notice; the ratings supplied are provided based on the product manufacturer. The information contained in this specification sheet should not be considered a warranty, expressed or implied, including, but not limited to, a warranty of merchantability or fitness for a particular purpose. In no event shall VeroBoard be liable for any incidental or consequential damages resulting from the use, misuse, or inability to use the product. This exclusion applies regardless of whether such damages are sought based on breach of warranty, breach of contract, negligence, strict liability in tort, or any other legal theory.

**3CCT
SELECTABLE**
Brightness
589~673
lumens



**LED DRIVER
INCLUDED**

SKU: 666561415228