



P103-WH-3000K

SINGLE GANG LOW VOLTAGE LED STEP LIGHT 2W 12V 3000K (WARM WHITE)

Specifications



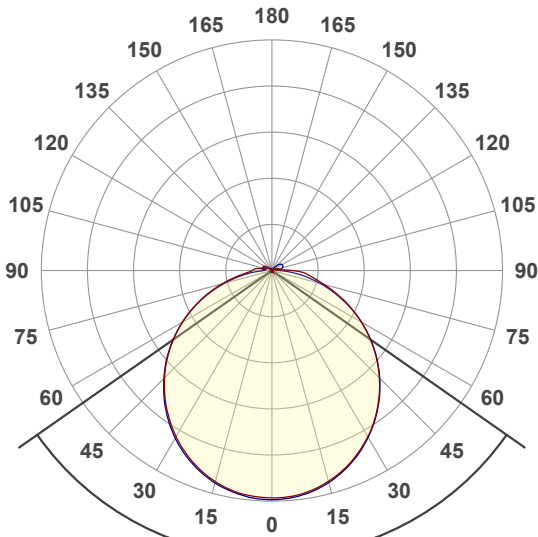
Model No.:	P103-WH-3000K
Input Voltage:	12V DC
Wattage:	2W
Fixture Finish:	White
Color Temperatures:	3000K (Warm White)
Rendering Index:	CRI>80
Luminous Flux:	80-100 lumens
Wire Length:	203 mm (8 in) 20AWG
Dimensions:	Length 123 mm (4.8 in) Width 78.5 mm (3 in) Depth 30 mm (1.18 in)
Cut Size Diameter:	105 mm (4.1 in) 45 mm (1.7 in)
Certification:	ETL



SKU#: 666561412449

Features

- Easy to change the front look of that to any different wall plate you like.



Beam angle

110°

Color



CIE1931
x: 0.439
y: 0.399

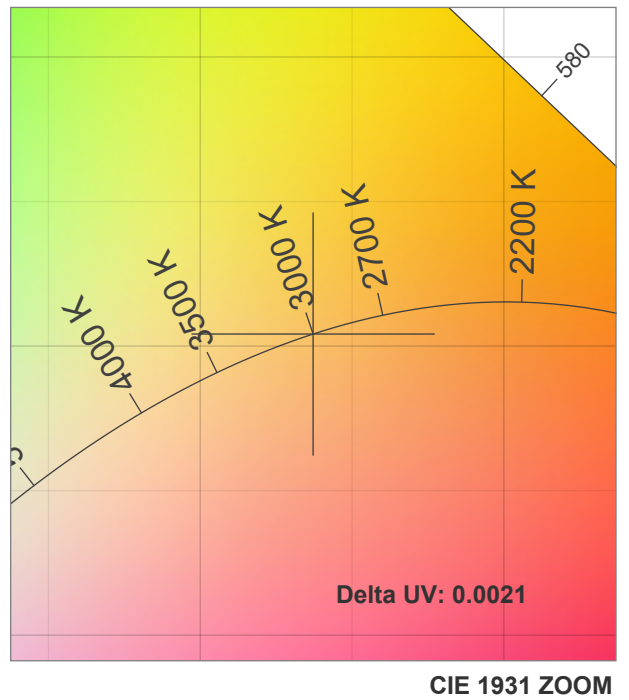
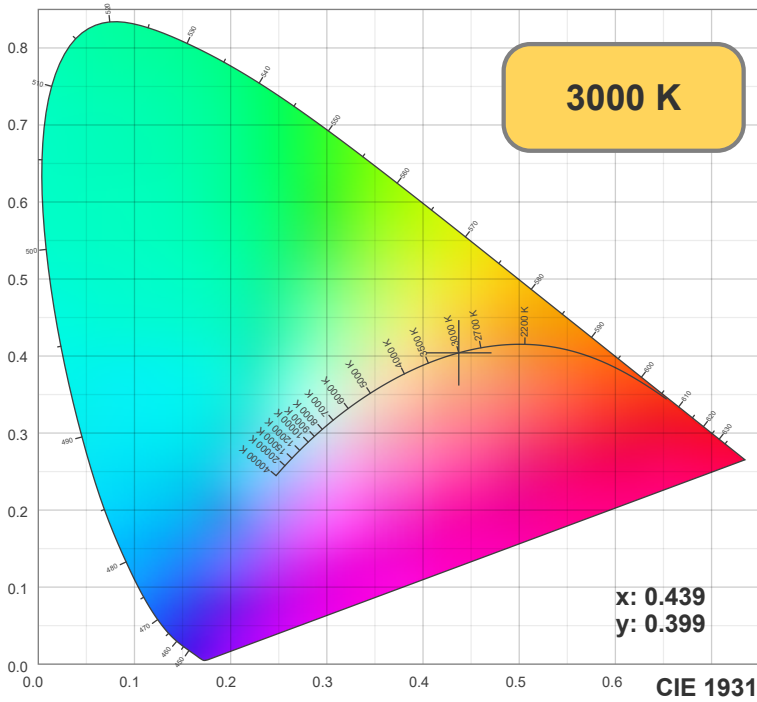
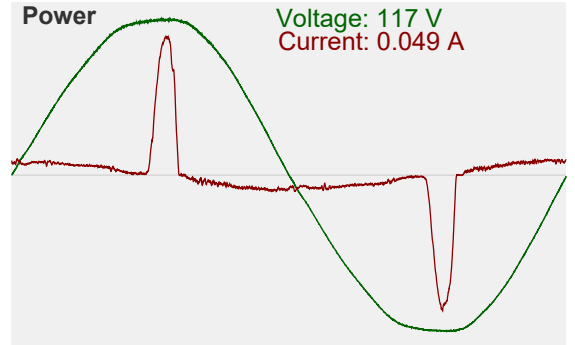
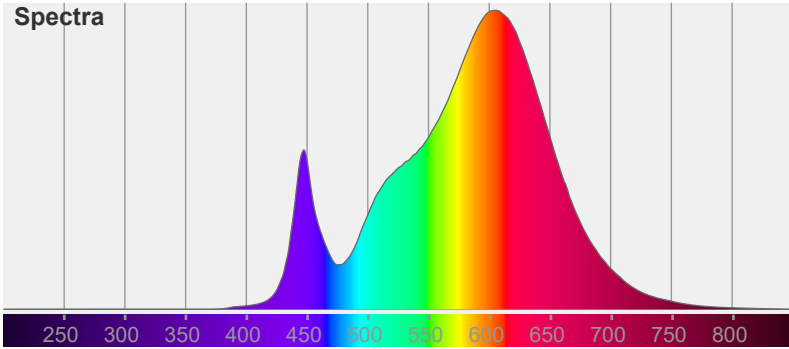
Depth
30mm(1.18 inch)

Cut size
105 mm (4.13 inch)
x
45 mm (1.77 inch)

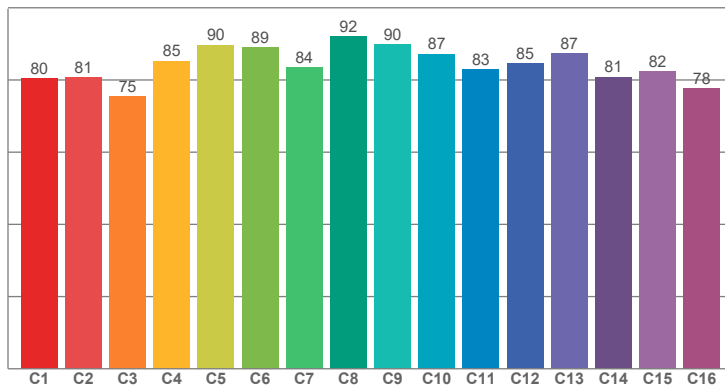


Disclaimer

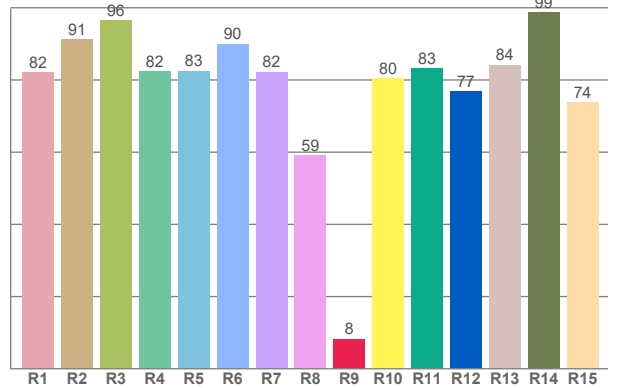
The data and information contained in this specification sheet are subject to change without notice; the ratings supplied are provided based on the product manufacturer. The information contained in this specification sheet should not be considered a warranty, expressed or implied, including, but not limited to, a warranty of merchantability or fitness for a particular purpose. In no event shall LED Lights and Parts be liable for any incidental or consequential damages resulting from the use, misuse, or inability to use the product. This exclusion applies regardless of whether such damages are sought based on breach of warranty, breach of contract, negligence, strict liability in tort, or any other legal theory.



TM30: 84.2



CRI: 83.2 (R1-R8)





CRI R values, only R1-R8 are used to calculate final CRI value

R1	R2	R3	R4	R5	R6	R7	R8	R9	R10	R11	R12	R13	R14	R15
82.00	91.15	96.40	82.44	82.52	90.01	82.20	59.15	8.27	80.38	83.18	76.87	84.21	98.67	73.71

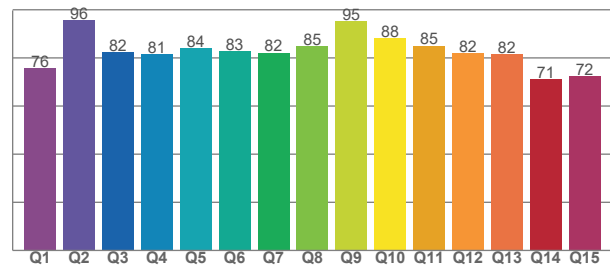
TM30 C values, 16 binned values out of total of 99 C values

C1	C2	C3	C4	C5	C6	C7	C8	C9	C10	C11	C12	C13	C14	C15	C16
80.44	80.62	75.46	85.30	89.68	89.07	83.54	92.04	89.81	87.22	82.97	84.63	87.39	80.86	82.35	77.62

CQS Q values

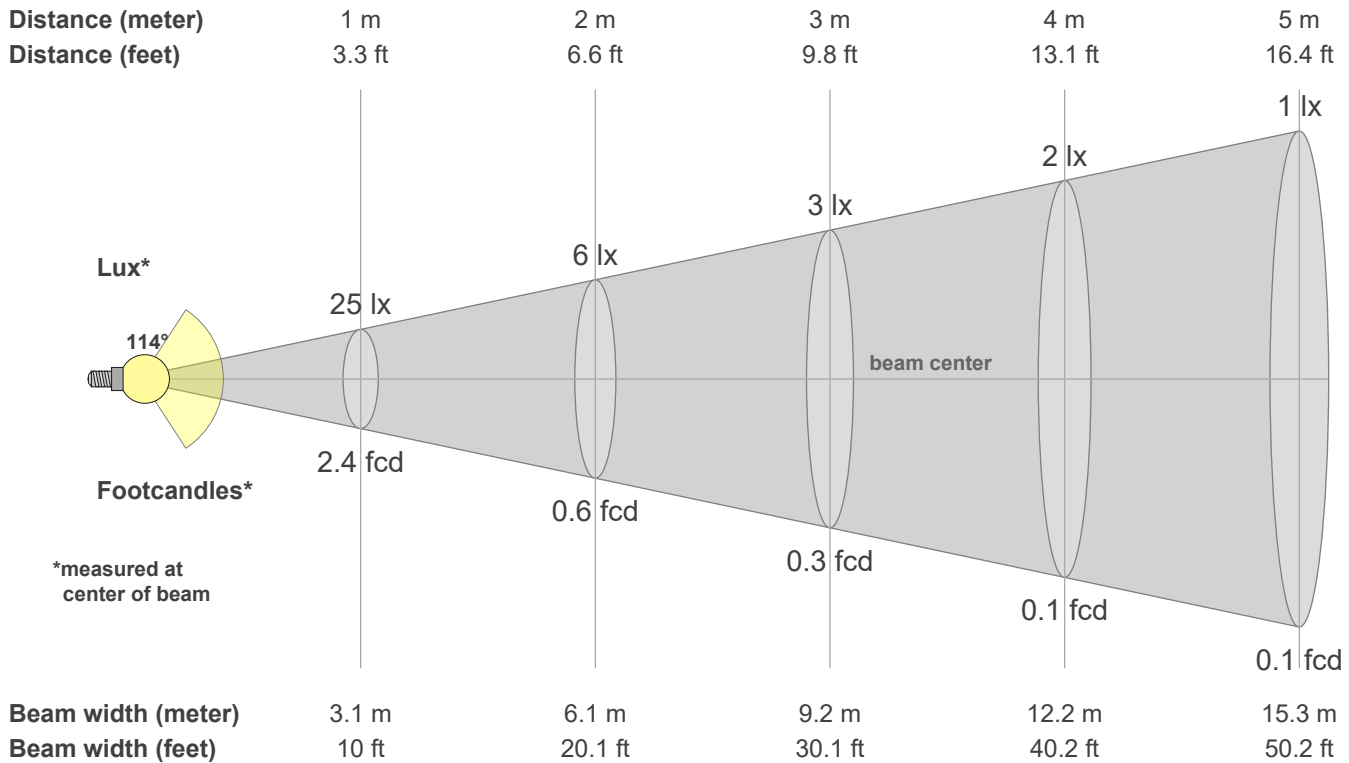
Q1	Q2	Q3	Q4	Q5	Q6	Q7	Q8	Q9	Q10	Q11	Q12	Q13	Q14	Q15
75.75	95.80	82.37	81.47	83.97	82.98	82.20	84.73	95.29	88.12	85.06	82.14	81.60	71.10	72.41

CQS: 81.6



Color parameters

CCT	CRI	CRI R9	TM30 Rf	TM30 Rg	CQS	x	y	u	v	Duv
3000 K	83.2	8.3	84.2	98.5	81.6	0.4	0.4	0.3	0.3	-0.0021



Intensities in 0° c-plane

0°	5°	10°	15°	20°	25°	30°	35°	40°	45°	50°	55°	60°	65°	70°	75°	80°	85°	90°	95°
25.5	25.3	24.9	24.4	23.6	22.6	21.4	20.1	18.6	17.0	15.2	13.4	11.6	9.7	7.8	6.1	4.7	3.7	2.3	0.9
100%	99%	98%	96%	92%	89%	84%	79%	73%	67%	60%	53%	45%	38%	31%	24%	19%	15%	9%	4%



Intensities in 90° c-plane

0°	5°	10°	15°	20°	25°	30°	35°	40°	45°	50°	55°	60°	65°	70°	75°	80°	85°	90°	95°
25.5	25.5	25.1	24.5	23.7	22.7	21.5	20.2	18.7	17.0	15.3	13.5	11.6	9.5	7.5	5.6	3.7	2.1	1.0	0.9
100%	100%	99%	96%	93%	89%	84%	79%	73%	67%	60%	53%	45%	37%	30%	22%	15%	8%	4%	3%

Intensities in 180° c-plane

0°	5°	10°	15°	20°	25°	30°	35°	40°	45°	50°	55°	60°	65°	70°	75°	80°	85°	90°	95°
25.5	25.3	25.0	24.4	23.6	22.6	21.4	20.1	18.6	17.0	15.2	13.4	11.5	9.6	7.7	5.8	4.1	2.9	2.2	1.9
100%	99%	98%	96%	93%	89%	84%	79%	73%	67%	60%	53%	45%	38%	30%	23%	16%	11%	9%	7%

Intensities in 270° c-plane

0°	5°	10°	15°	20°	25°	30°	35°	40°	45°	50°	55°	60°	65°	70°	75°	80°	85°	90°	95°
25.5	25.5	25.1	24.6	23.8	22.8	21.6	20.2	18.7	17.1	15.3	13.5	11.5	9.5	7.5	5.5	3.6	2.0	0.9	0.9
100%	100%	99%	96%	93%	89%	85%	79%	73%	67%	60%	53%	45%	37%	29%	22%	14%	8%	4%	4%

Beam angle 50%	Field angle 10%	Cutoff angle 2.5%	Intensity ratio in 120° cone	Intensity ratio in 90° cone
113.7°	171.6°	243.8°	71.9%	48.7%