



## 20881B-BK-WW

### BLACK ROUND LED RETROFIT CABINET PUCK LIGHT 12V 3.5W 3000K (WARM WHITE)

#### Specifications



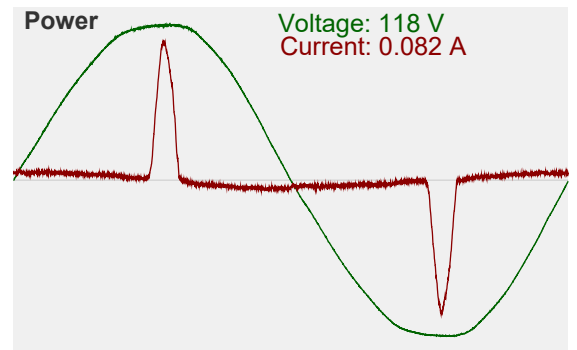
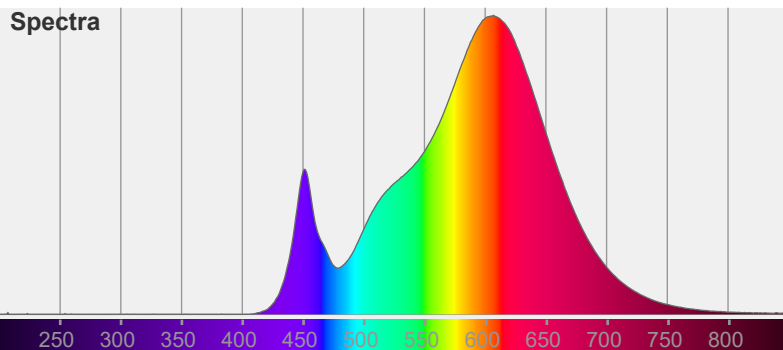
Model No.:	20881B-BK-WW
Input Voltage:	12V DC
Wattage:	3.5W
Color Temperature:	3000K (Warm White)
Fixture Color Finish:	Black
Luminous Flux:	260-300 Lm
Beam Angle:	110°
LED Type:	COB LED
Material:	Aluminum
IP Rating:	IP20
Rendering Index:	CRI>80
Dimmable:	Yes
Dimensions:	Diameter with rim - 62 mm (2.44 in) Depth for flush mount - 8 mm (0.5 in) Cut-size for flush mount - 56 mm (2.20 in)
Certification:	UL, FCC



**SKU: 666561411374**

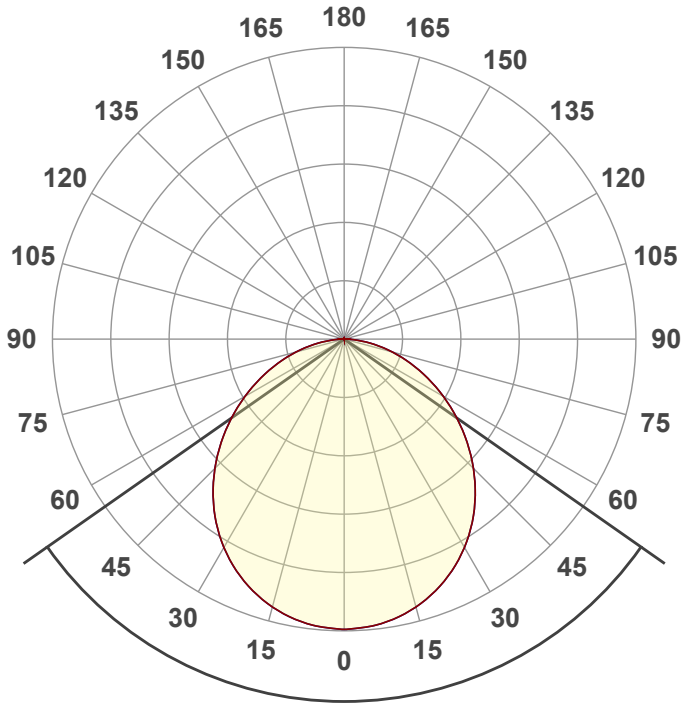
#### Features

- Aluminum housing, well heat dissipation, long life-span, and low light decay.
- Environmentally friendly, RoHS compliant.
- Low power consumption, high energy efficiency.
- Widely applicable in the wardrobe, cabinet, shelves of a modern kitchen.
- Can be made in custom color temperatures (2700K, 4000K, 5000K) if required. Extra charges are applicable.
- A good replacement for a halogen light fixture with a cut size of 2.20 inches.
- Can be used as both a flush mount or surface mount.
- Rated CRI>80 and meets the Canadian and United States standards with UL STD. C22.2
- Protects from a large part of the body such as a hand having an IP20 rating.
- Applicable only for dry locations.
- We offer a step-down transformer to line voltage in both hardwire and plugin.
- Comes with the push springs, easy for installation for the flush mount feature. else, can be directly screwed on to the surface.
- The dimmer controller must have the same input rating as the dimmable power supply or driver. Other low voltage dimmers are also compatible.
- Available in Silver Grey, White, and Black color trims in the same brightness.
- Comes with 3 feet of wire AWG22.



#### Disclaimer

The data and information contained in this specification sheet are subject to change without notice; the ratings supplied are provided based on the product manufacturer. The information contained in this specification sheet should not be considered a warranty, expressed or implied, including, but not limited to, a warranty of merchantability or fitness for a particular purpose. In no event shall LED Lights and Parts be liable for any incidental or consequential damages resulting from the use, misuse, or inability to use the product. This exclusion applies regardless of whether such damages are sought based on breach of warranty, breach of contract, negligence, strict liability in tort, or any other legal theory.



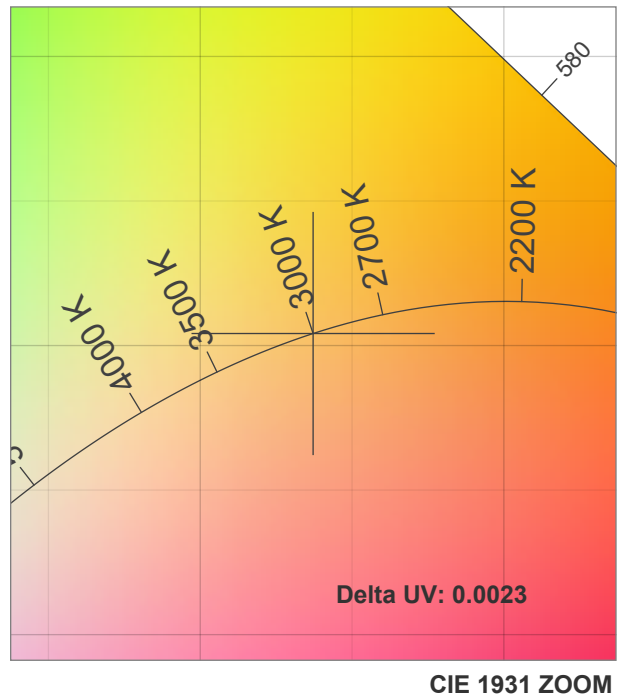
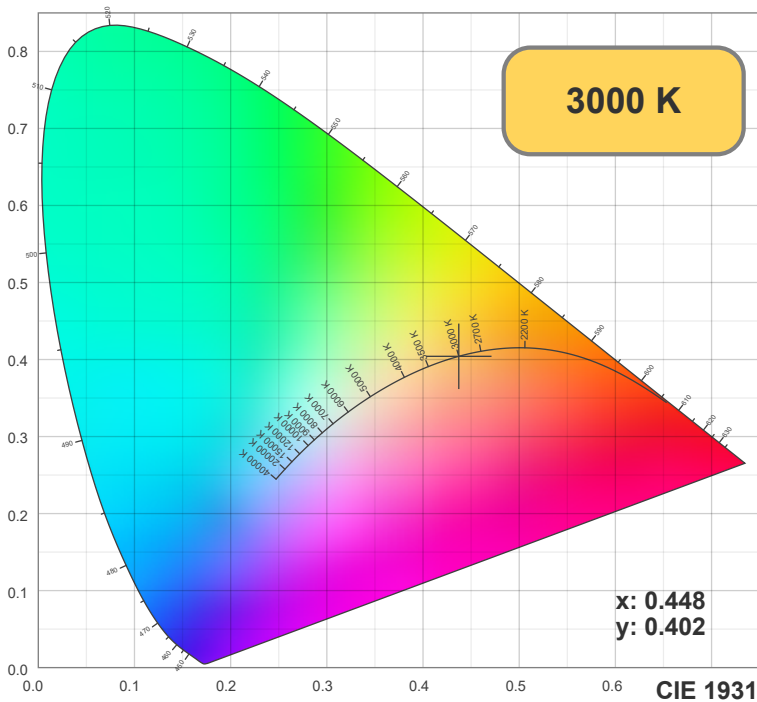
Beam angle

**110°**

Color

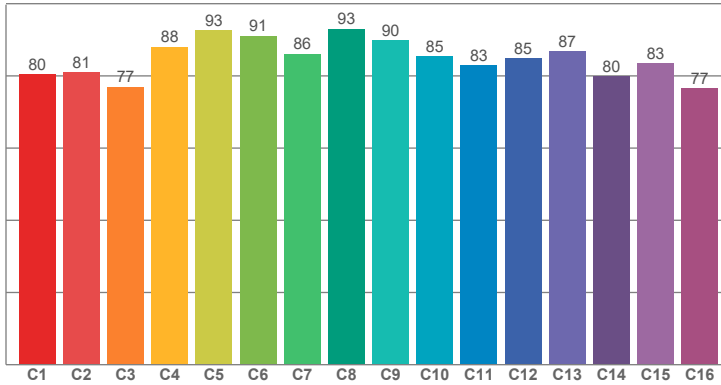


CIE1931  
x: 0.448  
y: 0.402

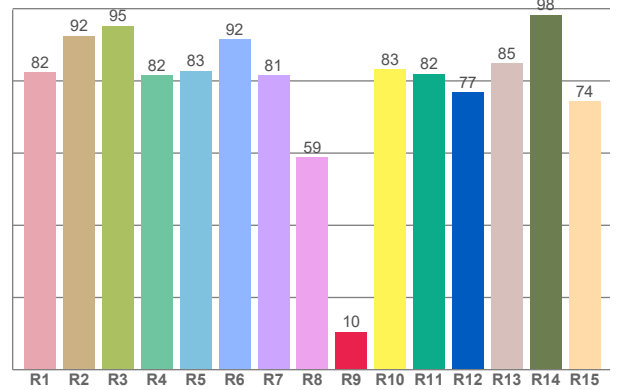




**TM30: 84.8**



**CRI: 83.3 (R1-R8)**



CRI R values, only R1-R8 are used to calculate final CRI value

R1	R2	R3	R4	R5	R6	R7	R8	R9	R10	R11	R12	R13	R14	R15
82.34	92.42	95.24	81.55	82.77	91.54	81.45	58.78	10.48	83.15	81.92	76.90	84.91	98.23	74.29

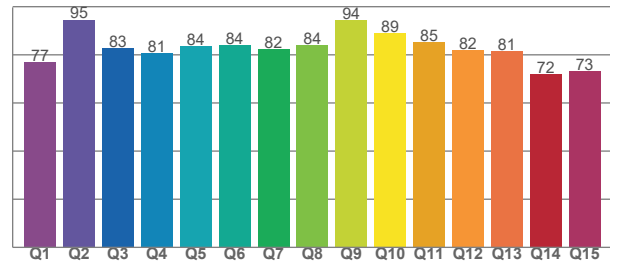
TM30 C values, 16 binned values out of total of 99 C values

C1	C2	C3	C4	C5	C6	C7	C8	C9	C10	C11	C12	C13	C14	C15	C16
80.44	80.96	76.96	88.02	92.65	91.04	86.15	93.01	89.91	85.38	82.87	84.89	86.85	79.85	83.44	76.55

CQS Q values

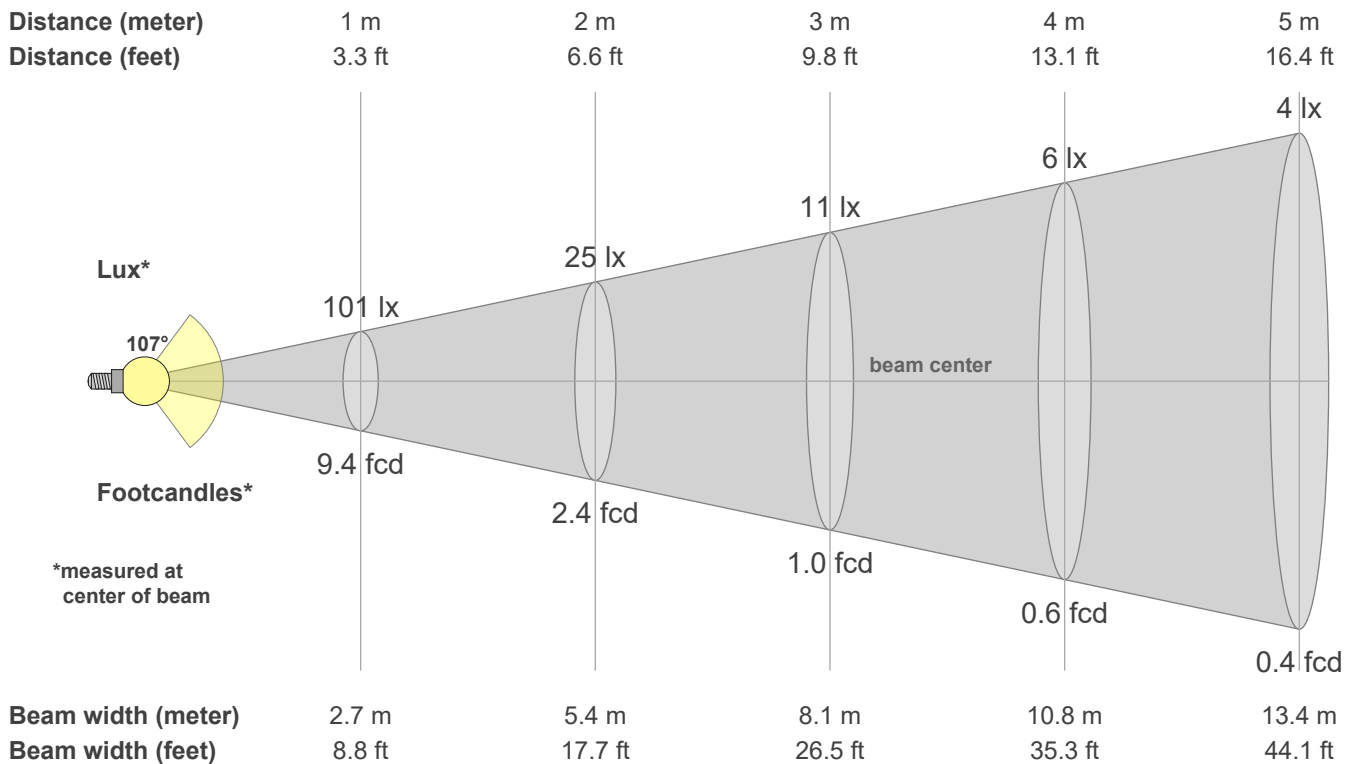
Q1	Q2	Q3	Q4	Q5	Q6	Q7	Q8	Q9	Q10	Q11	Q12	Q13	Q14	Q15
76.92	94.59	82.74	80.58	83.77	83.89	82.31	83.99	94.39	88.99	85.36	82.05	81.37	72.05	73.36

**CQS: 81.9**



### Color parameters

CCT	CRI	CRI R9	TM30 Rf	TM30 Rg	CQS	x	y	u	v	Duv
3000 K	83.3	10.5	84.8	97.4	81.9	0.4	0.4	0.3	0.3	-0.0023





### Intensities in 0° c-plane

0°	5°	10°	15°	20°	25°	30°	35°	40°	45°	50°	55°	60°	65°	70°	75°	80°	85°	90°	95°
101	101	99	97	93	89	84	78	71	64	56	48	40	32	25	17	11	5	1	0
100%	99%	98%	96%	92%	88%	83%	77%	70%	63%	55%	47%	39%	32%	24%	17%	11%	5%	1%	0%

### Intensities in 90° c-plane

0°	5°	10°	15°	20°	25°	30°	35°	40°	45°	50°	55°	60°	65°	70°	75°	80°	85°	90°	95°
101	101	99	97	93	89	84	78	71	64	56	48	40	32	25	17	11	5	1	0
100%	99%	98%	96%	92%	88%	83%	77%	70%	63%	55%	47%	39%	32%	24%	17%	11%	5%	1%	0%

### Intensities in 180° c-plane

0°	5°	10°	15°	20°	25°	30°	35°	40°	45°	50°	55°	60°	65°	70°	75°	80°	85°	90°	95°
101	101	99	97	93	89	84	78	71	64	56	48	40	32	25	17	11	5	1	0
100%	99%	98%	96%	92%	88%	83%	77%	70%	63%	55%	47%	39%	32%	24%	17%	11%	5%	1%	0%

### Intensities in 270° c-plane

0°	5°	10°	15°	20°	25°	30°	35°	40°	45°	50°	55°	60°	65°	70°	75°	80°	85°	90°	95°
101	101	99	97	93	89	84	78	71	64	56	48	40	32	25	17	11	5	1	0
100%	99%	98%	96%	92%	88%	83%	77%	70%	63%	55%	47%	39%	32%	24%	17%	11%	5%	1%	0%

<b>Beam angle 50%</b>	<b>Field angle 10%</b>	<b>Cutoff angle 2.5%</b>	<b>Intensity ratio in 120° cone</b>	<b>Intensity ratio in 90° cone</b>
<b>106.7°</b>	<b>161.0°</b>	<b>175.5°</b>	<b>79.5%</b>	<b>55.1%</b>