



LP-MGFTD-17212

6" SQUARE LED PANEL LIGHT LP-MGFTD-17212, 120V 12W 3000K (WARM WHITE)

Specifications



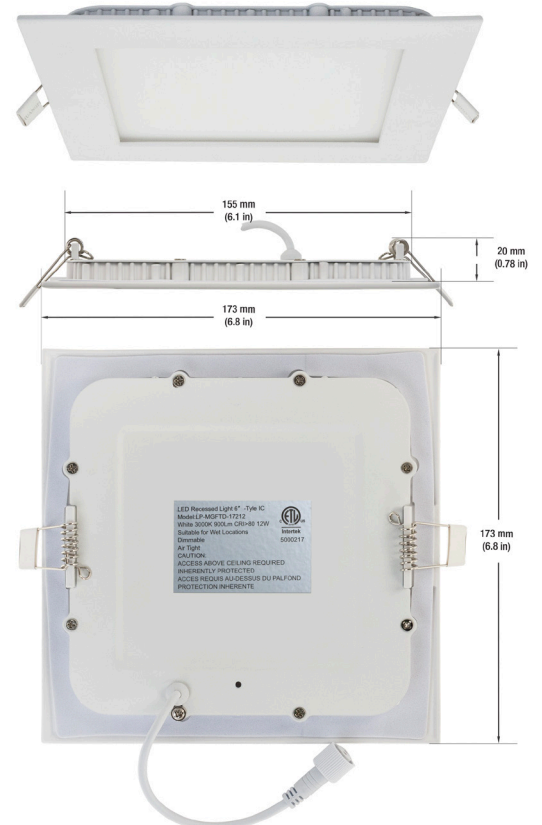
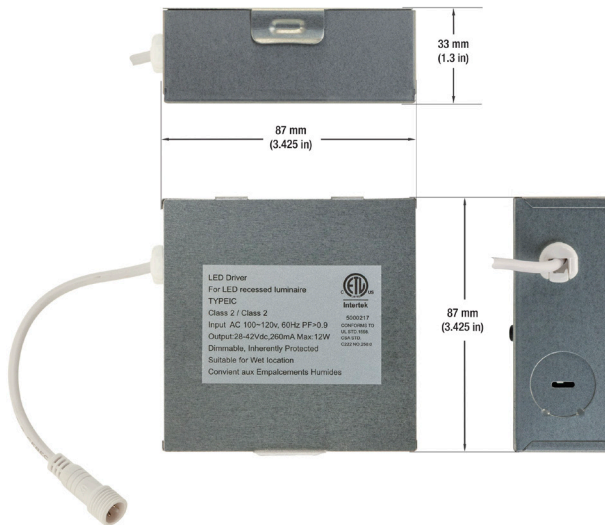
Model No.:	LP-MGFTD-17212
Input Voltage:	120V AC
Wattage:	12W
Frequency :	50-60 Hz
Color Temperature:	3000K (Warm White)
Brightness:	900 Lumens
Beam Angel:	110°
Trim Color:	White
Dimmable:	Yes
IC Rated:	Yes
Rendering Index:	CRI>80
IP Rated:	IP20 (Suitable for damp locations)
Wire Length:	25 cm (9.8 in) 22AWG
Dimensions:	Overall Length: 173 mm (6.81 in) Depth: 23 mm (0.9 in)
Cut Size:	155 mm (6.1 in)
J-Box Dimensions:	Length: 87 mm (3.425 in) Width: 87 mm (3.425 in) Depth: 33 mm (1.3 in)
Certification:	ETL



SKU: 666561411299

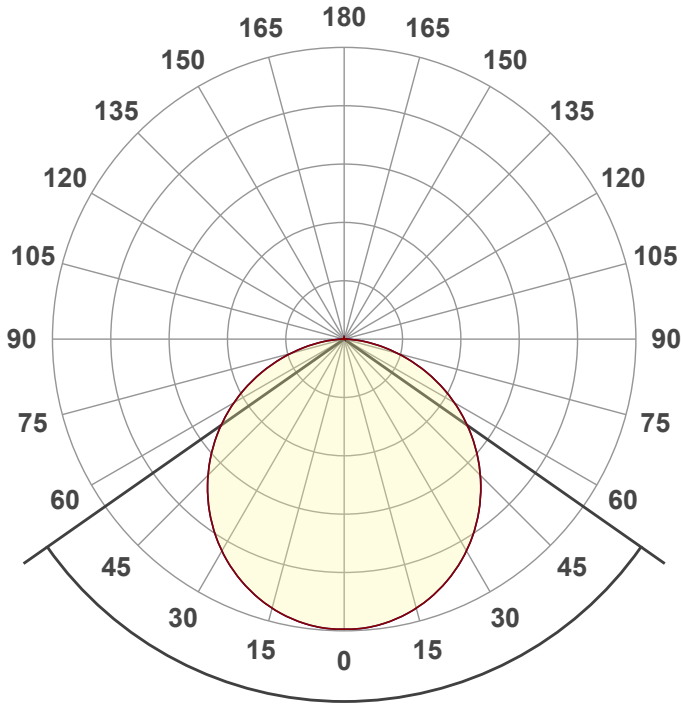
Features

- This downlight works in various indoor applications. It has universal ceiling applications.
- Easy installation, fast connecting with the input wires and spring clips for a secure mount.
- Recessed lighting is suitable for both dry and damp environments.
- Well suited for both residential and commercial indoor spaces.



Disclaimer

The data and information contained in this specification sheet are subject to change without notice; the ratings supplied are provided based on the product manufacturer. The information contained in this specification sheet should not be considered a warranty, expressed or implied, including, but not limited to, a warranty of merchantability or fitness for a particular purpose. In no event shall LED Lights and Parts be liable for any incidental or consequential damages resulting from the use, misuse, or inability to use the product. This exclusion applies regardless of whether such damages are sought based on breach of warranty, breach of contract, negligence, strict liability in tort, or any other legal theory.



Beam angle

110°

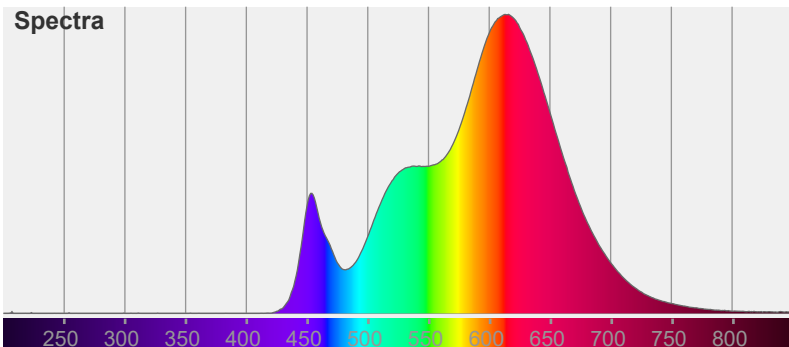


Color

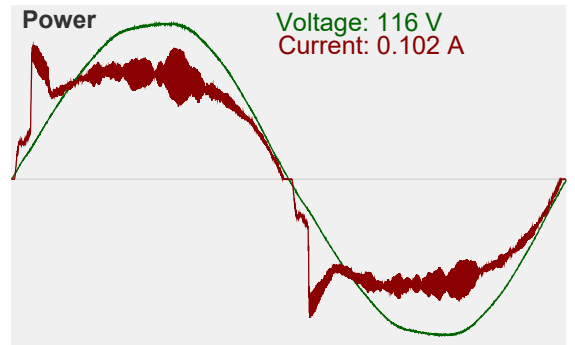


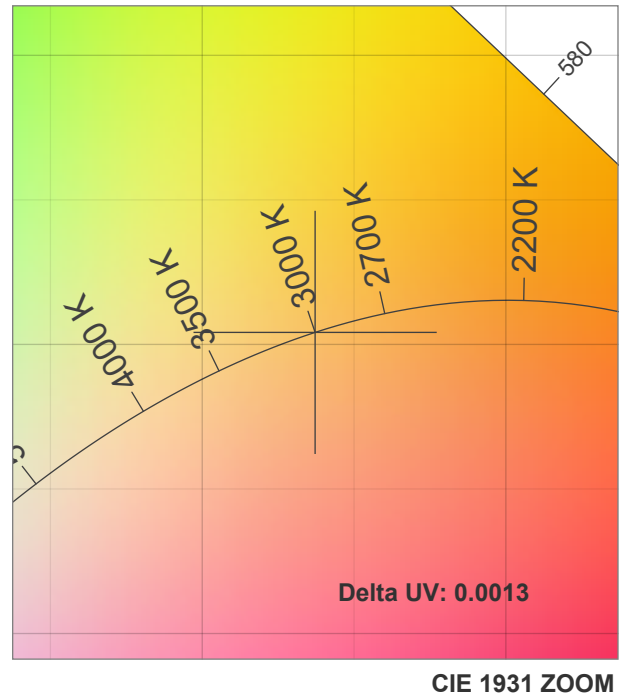
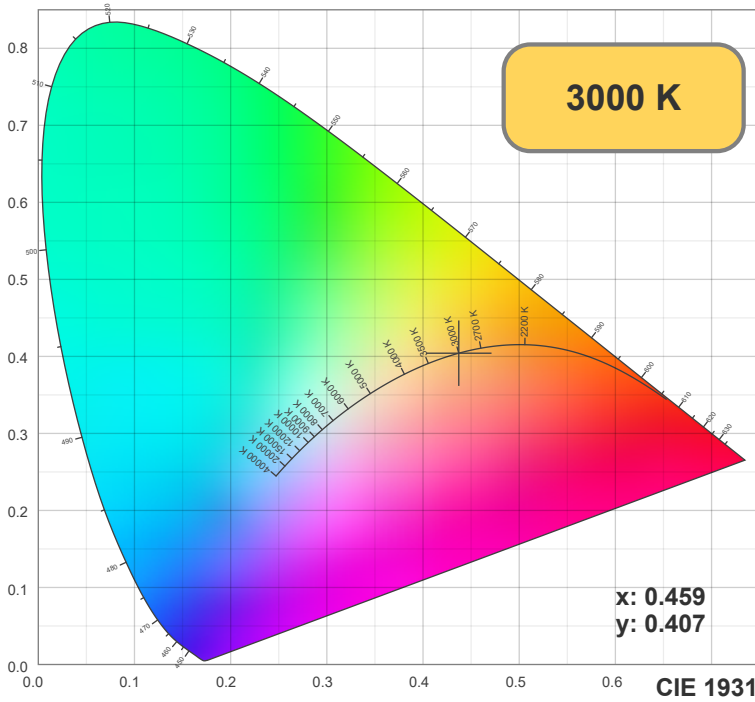
CIE1931
x: 0.459
y: 0.407

Spectra

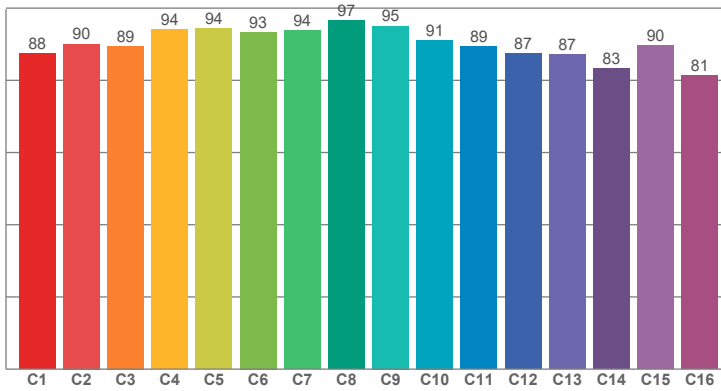


Power

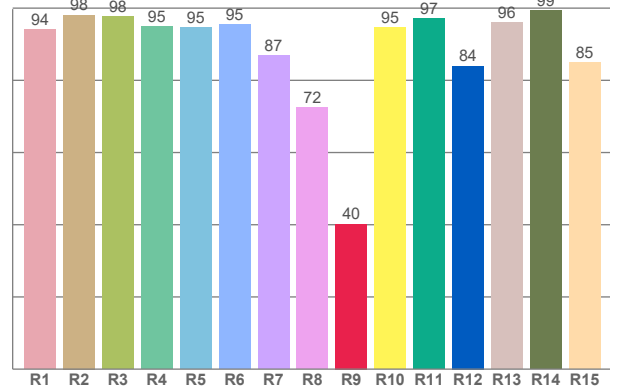




TM30: 90.3



CRI: 91.7 (R1-R8)



CRI R values, only R1-R8 are used to calculate final CRI value

R1	R2	R3	R4	R5	R6	R7	R8	R9	R10	R11	R12	R13	R14	R15
94.07	98.12	97.68	94.83	94.56	95.47	86.79	72.39	40.20	94.70	97.04	84.00	96.08	99.36	84.97

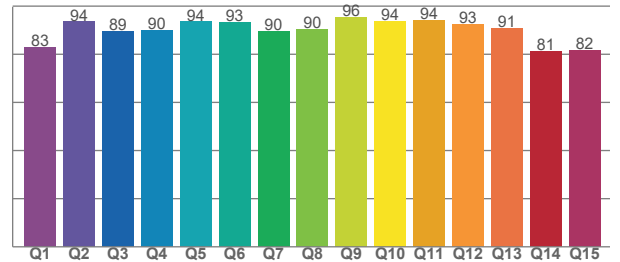
TM30 C values, 16 binned values out of total of 99 C values

C1	C2	C3	C4	C5	C6	C7	C8	C9	C10	C11	C12	C13	C14	C15	C16
87.53	90.09	89.49	94.04	94.30	93.37	93.73	96.62	95.08	91.14	89.44	87.34	87.17	83.20	89.71	81.35

CQS Q values

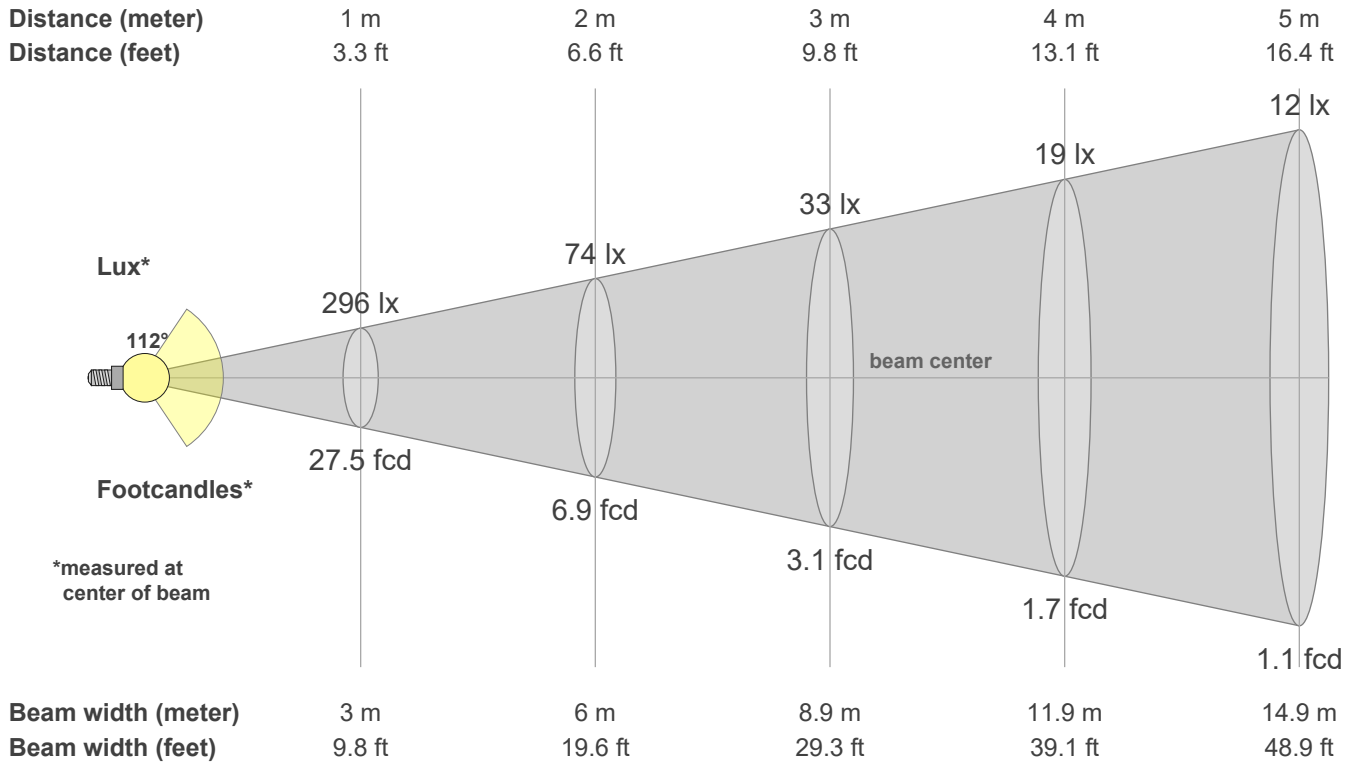
Q1	Q2	Q3	Q4	Q5	Q6	Q7	Q8	Q9	Q10	Q11	Q12	Q13	Q14	Q15
82.85	93.51	89.39	90.15	93.51	93.32	89.58	90.40	95.50	93.81	94.18	92.58	90.86	81.32	81.62

CQS: 88.9



Color parameters

CCT	CRI	CRI R9	TM30 Rf	TM30 Rg	CQS	x	y	u	v	Duv
3000 K	91.7	40.2	90.3	99.3	88.9	0.4	0.4	0.3	0.3	-0.0013



Intensities in 0° c-plane

0°	5°	10°	15°	20°	25°	30°	35°	40°	45°	50°	55°	60°	65°	70°	75°	80°	85°	90°	95°
296	295	291	285	275	264	250	234	216	197	176	153	130	106	81	57	34	15	3	0
100%	100%	98%	96%	93%	89%	84%	79%	73%	66%	59%	52%	44%	36%	27%	19%	12%	5%	1%	0%

Intensities in 90° c-plane

0°	5°	10°	15°	20°	25°	30°	35°	40°	45°	50°	55°	60°	65°	70°	75°	80°	85°	90°	95°
296	295	291	285	275	264	250	234	216	197	176	153	130	106	81	57	34	15	3	0
100%	100%	98%	96%	93%	89%	84%	79%	73%	66%	59%	52%	44%	36%	27%	19%	12%	5%	1%	0%

Intensities in 180° c-plane

0°	5°	10°	15°	20°	25°	30°	35°	40°	45°	50°	55°	60°	65°	70°	75°	80°	85°	90°	95°
296	295	291	285	275	264	250	234	216	197	176	153	130	106	81	57	34	15	3	0
100%	100%	98%	96%	93%	89%	84%	79%	73%	66%	59%	52%	44%	36%	27%	19%	12%	5%	1%	0%

Intensities in 270° c-plane

0°	5°	10°	15°	20°	25°	30°	35°	40°	45°	50°	55°	60°	65°	70°	75°	80°	85°	90°	95°
296	295	291	285	275	264	250	234	216	197	176	153	130	106	81	57	34	15	3	0
100%	100%	98%	96%	93%	89%	84%	79%	73%	66%	59%	52%	44%	36%	27%	19%	12%	5%	1%	0%

Beam angle 50%	Field angle 10%	Cutoff angle 2.5%	Intensity ratio in 120° cone	Intensity ratio in 90° cone
112.3°	162.2°	174.8°	78.3%	53.3%