



## ELS-CS0012W-049

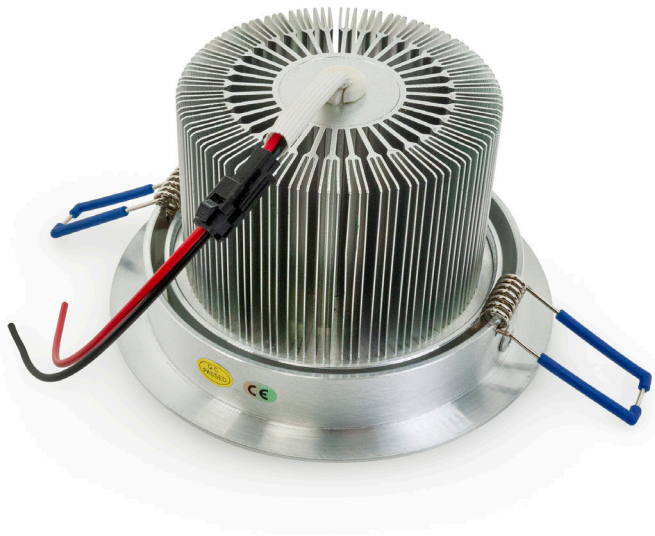
### LED CEILING LIGHT, 12W 3000 (WARM WHITE)

#### Specifications

Model No.:	ELS-CS0012W-049
Input Voltage:	12V DC
Wattage:	12W
Frequency:	50-60Hz
Color Temperature:	3000K (Warm White)
Brightness:	1000 - 1100 Lumens
Light Source Specification:	12 x 1W LED
Body Color:	Silver Gray
Dimmable:	Yes
Beam Angle:	30°
Rendering Index:	CRI>80
IC Rated:	Yes
IP Rated:	IP20 (Dry Locations)
Dimensions:	Ø 137 mm (5 in), Depth 77 mm (3 in)
Cut Size:	Ø 118 mm (4.64 in)
Certificate:	CE

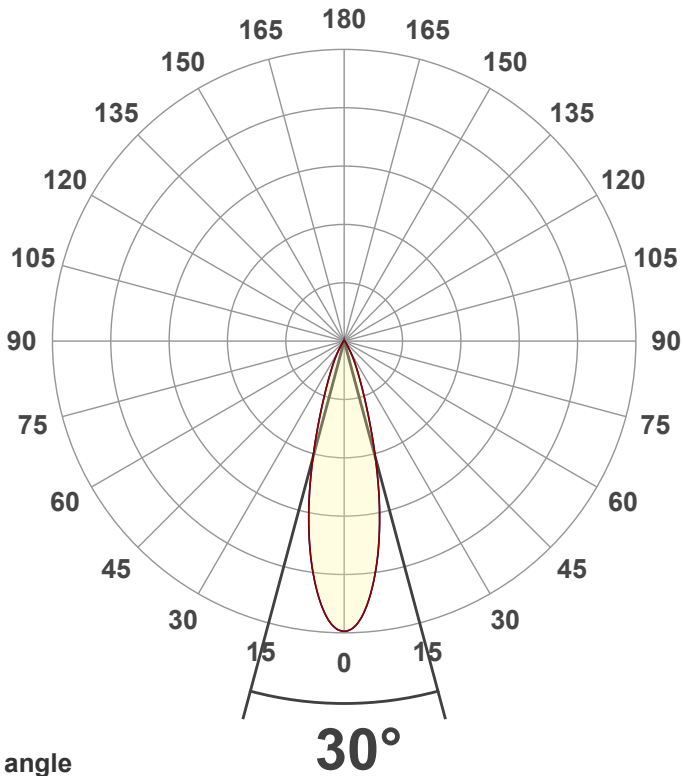


SKU: 666561405496



#### Disclaimer

The data and information contained in this specification sheet are subject to change without notice; the ratings supplied are provided based on the product manufacturer. The information contained in this specification sheet should not be considered a warranty, expressed or implied, including, but not limited to, a warranty of merchantability or fitness for a particular purpose. In no event shall LED Lights and Parts be liable for any incidental or consequential damages resulting from the use, misuse, or inability to use the product. This exclusion applies regardless of whether such damages are sought based on breach of warranty, breach of contract, negligence, strict liability in tort, or any other legal theory.

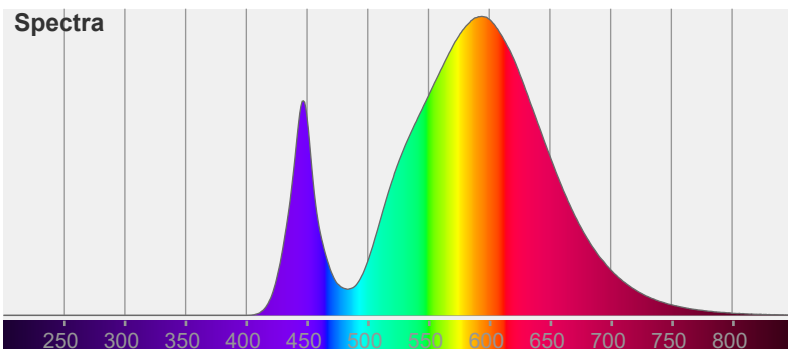


Color



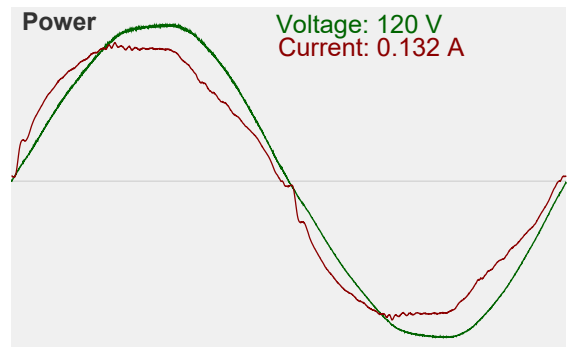
CIE1931  
x: 0.424  
y: 0.397

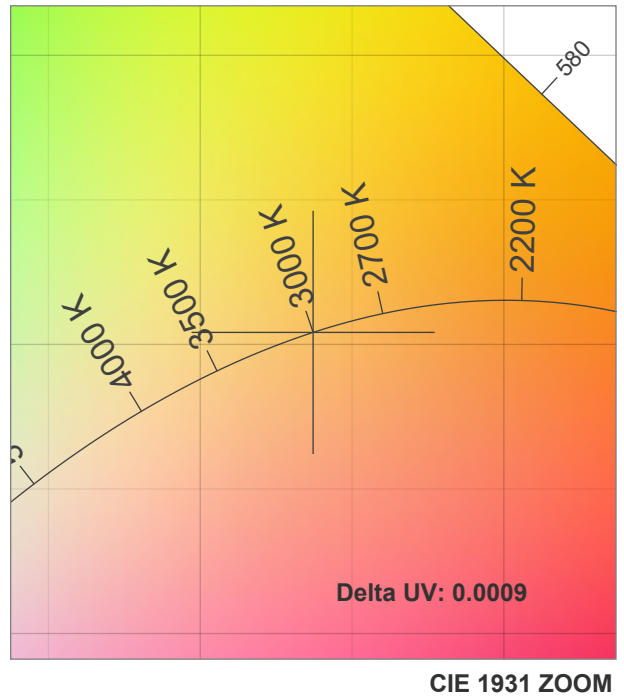
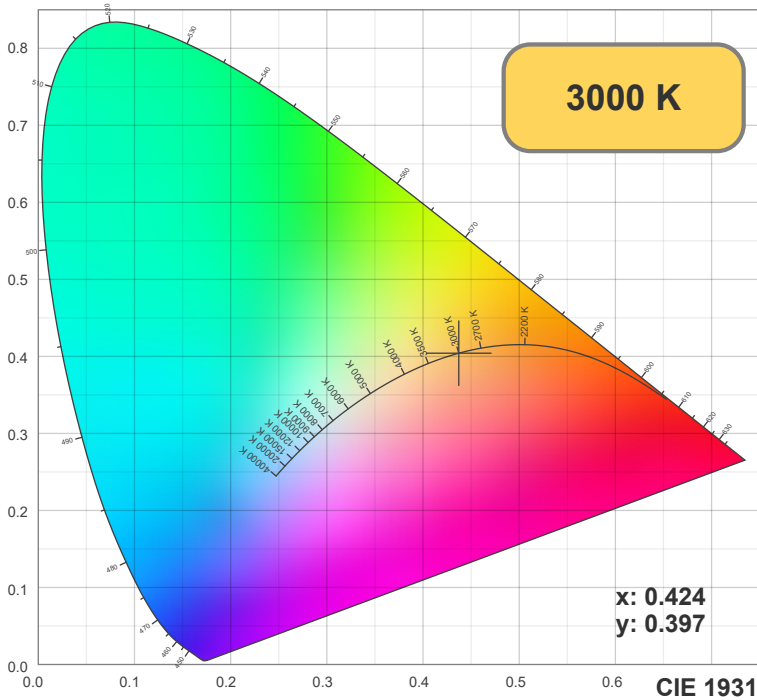
Spectra



Power

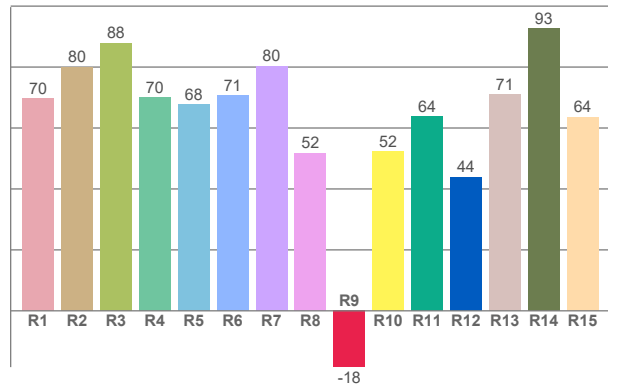
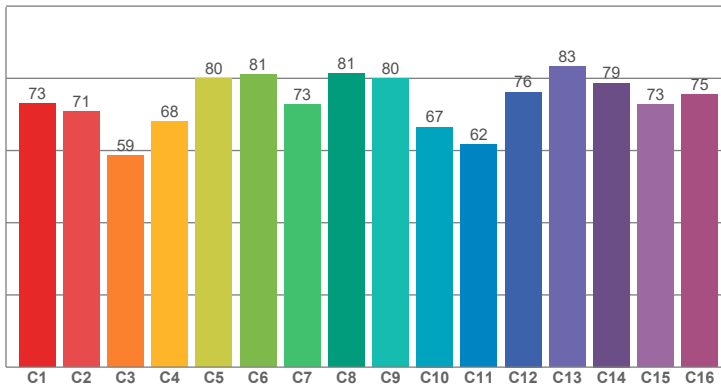
Voltage: 120 V  
Current: 0.132 A





TM30: 73.2

CRI: 72.2 (R1-R8)



CRI R values, only R1-R8 are used to calculate final CRI value

R1	R2	R3	R4	R5	R6	R7	R8	R9	R10	R11	R12	R13	R14	R15
69.58	80.01	87.90	69.97	67.62	70.67	80.35	51.78	-18.48	52.31	63.81	43.97	71.05	92.69	63.64

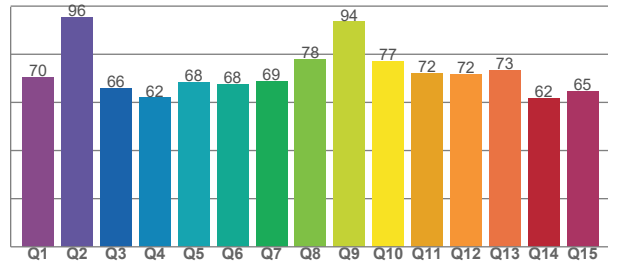
TM30 C values, 16 binned values out of total of 99 C values

C1	C2	C3	C4	C5	C6	C7	C8	C9	C10	C11	C12	C13	C14	C15	C16
73.02	70.89	58.66	68.10	79.94	81.01	72.71	81.31	79.91	66.51	61.63	76.25	83.36	78.71	72.68	75.49

CQS Q values

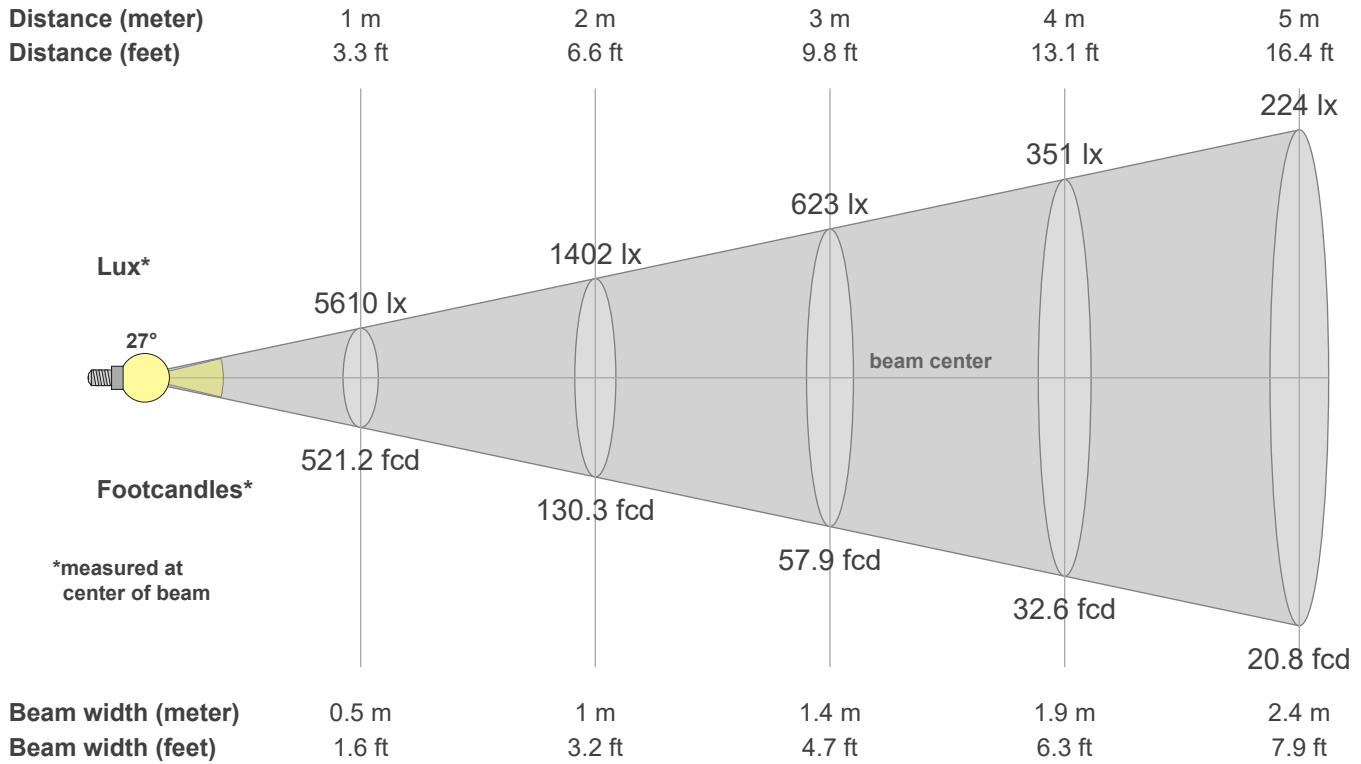
Q1	Q2	Q3	Q4	Q5	Q6	Q7	Q8	Q9	Q10	Q11	Q12	Q13	Q14	Q15
70.32	95.55	65.84	61.94	68.27	67.57	68.71	78.02	93.50	77.11	72.18	71.63	73.21	61.77	64.67

CQS: 70.9



## Color parameters

CCT	CRI	CRI R9	TM30 Rf	TM30 Rg	CQS	x	y	u	v	Duv
3000 K	72.2	-18.5	73.2	97.0	70.9	0.4	0.4	0.3	0.3	-0.0009



### Intensities in 0° c-plane

0°	2°	4°	6°	8°	10°	12°	14°	16°	18°	20°	22°	24°	26°	28°	30°	32°	34°	36°	38°
5610	5530	5288	4906	4432	3885	3283	2647	2035	1511	1113	825	621	472	353	254	178	125	94	76
100%	99%	94%	87%	79%	69%	59%	47%	36%	27%	20%	15%	11%	8%	6%	5%	3%	2%	2%	1%

### Intensities in 90° c-plane

0°	2°	4°	6°	8°	10°	12°	14°	16°	18°	20°	22°	24°	26°	28°	30°	32°	34°	36°	38°
5610	5530	5288	4906	4432	3885	3283	2647	2035	1511	1113	825	621	472	353	254	178	125	94	76
100%	99%	94%	87%	79%	69%	59%	47%	36%	27%	20%	15%	11%	8%	6%	5%	3%	2%	2%	1%

### Intensities in 180° c-plane

0°	2°	4°	6°	8°	10°	12°	14°	16°	18°	20°	22°	24°	26°	28°	30°	32°	34°	36°	38°
5610	5530	5288	4906	4432	3885	3283	2647	2035	1511	1113	825	621	472	353	254	178	125	94	76
100%	99%	94%	87%	79%	69%	59%	47%	36%	27%	20%	15%	11%	8%	6%	5%	3%	2%	2%	1%

### Intensities in 270° c-plane

0°	2°	4°	6°	8°	10°	12°	14°	16°	18°	20°	22°	24°	26°	28°	30°	32°	34°	36°	38°
5610	5530	5288	4906	4432	3885	3283	2647	2035	1511	1113	825	621	472	353	254	178	125	94	76
100%	99%	94%	87%	79%	69%	59%	47%	36%	27%	20%	15%	11%	8%	6%	5%	3%	2%	2%	1%

Beam angle 50%	Field angle 10%	Cutoff angle 2.5%	Intensity ratio in 120° cone	Intensity ratio in 90° cone
27.0°	49.5°	66.6°	98.4%	95.7%