



2' X 2' 24V DIMMABLE LED PANEL LIGHT
45W, 3000K (WARM WHITE)

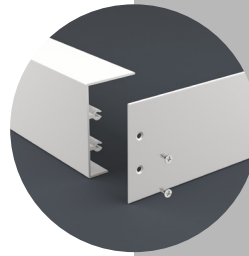
Specifications



Model No.:	PA2A04
Input Voltage:	24V DC
Wattage:	45W
Color Temperature:	3000K (Warm White)
Body Color:	Silver Grey
Brightness:	3000-3500 Lumens
Dimmable:	Yes
Rendering Index:	CRI>80
Wire Length:	55cm (21.6in) 20AWG
Dimensions:	Length: 605mm (23.8in) Width: 605mm (23.8in) Depth: 10mm (0.4in)
Certification:	UL

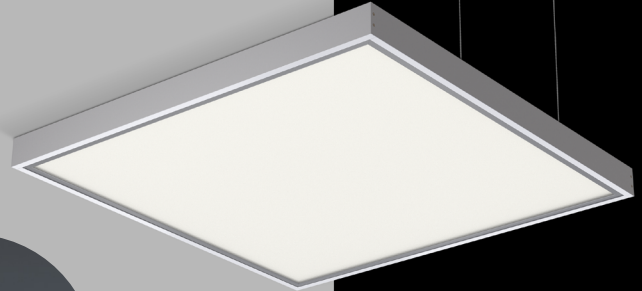
Hanging/Surface Mount Bracket
(Sold Separately)

SKU: 666561414351



Surface Mount

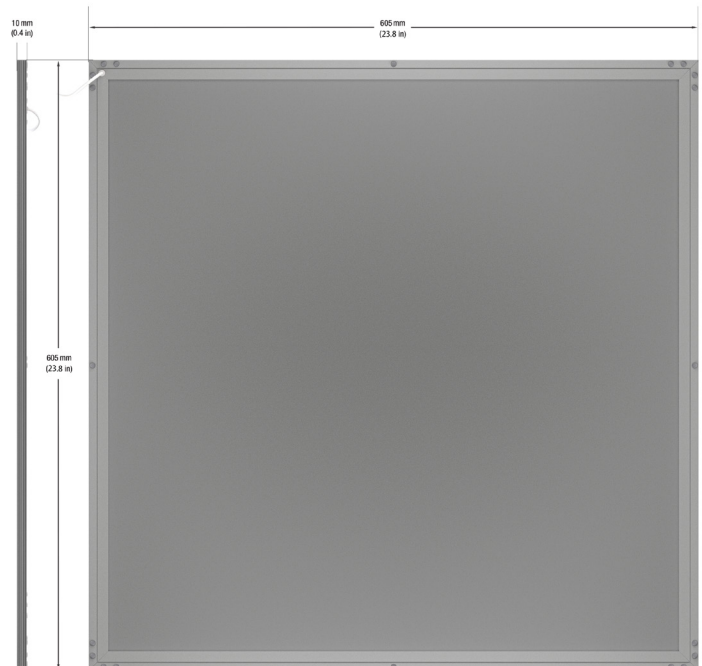
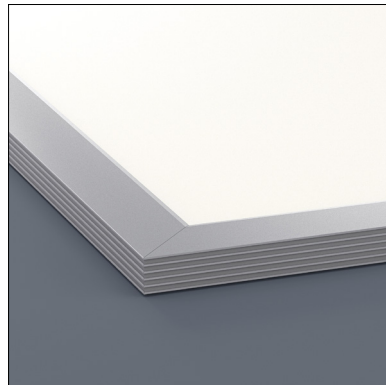
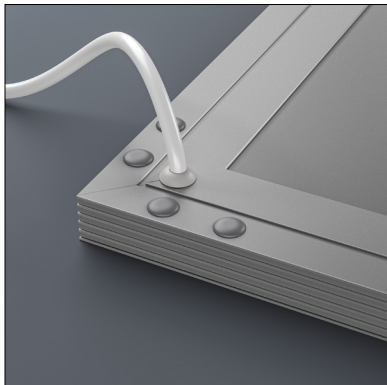
Hanging Mount



SKU: 666561404994

Features

- Ultraslim and low profile panel with thickness less than a half-inch.
- It has a high-quality reflector, that avoids glaring.
- It is a good replacement for a fluorescent tube.
- Can be dimmed using a 0-10V dimmer.
- Light is integrated at the sides within the fixture, providing even light distribution without flickering.
- Widely applicable for the ceiling in both commercial and residential buildings.
- Popular applications of surface mount panels in the office and suspended installation in warehouses.
- Lifespan of 50,000 hours.
- Dissipates very less heat and is safe to touch.
- Suitable for dry and damp locations.



Disclaimer

The data and information contained in this specification sheet are subject to change without notice; the ratings supplied are provided based on the product manufacturer. The information contained in this specification sheet should not be considered a warranty, expressed or implied, including, but not limited to, a warranty of merchantability or fitness for a particular purpose. In no event shall LED Lights and Parts be liable for any incidental or consequential damages resulting from the use, misuse, or inability to use the product. This exclusion applies regardless of whether such damages are sought based on breach of warranty, breach of contract, negligence, strict liability in tort, or any other legal theory.