

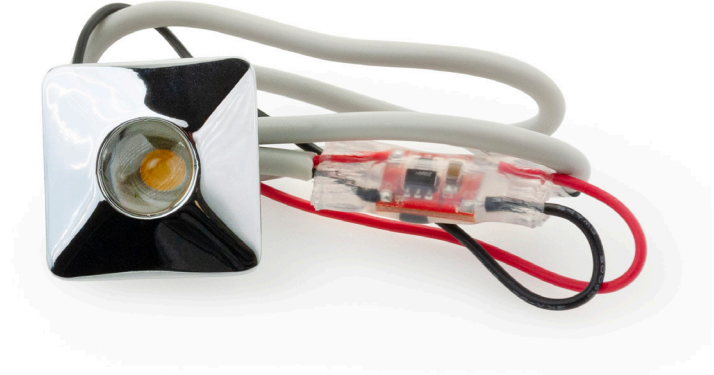


## C1009

SMALL SQUARE RECESSED LED LIGHTS 12V 1W  
3000K (Warm White)

### Specifications

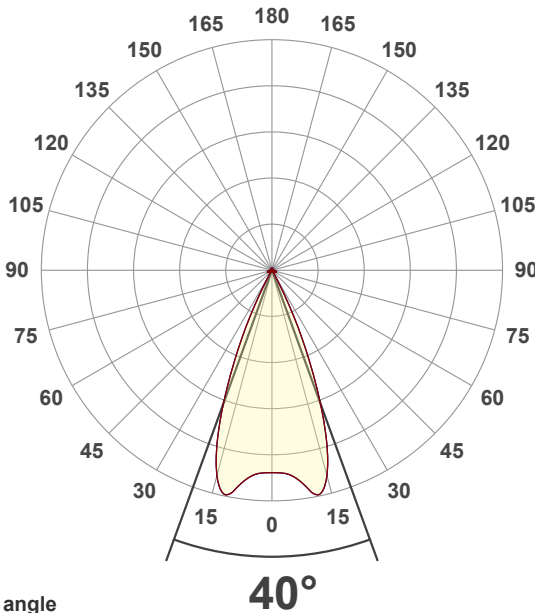
<b>Model No.:</b>	C1009
<b>Input Voltage:</b>	12V DC
<b>Wattage:</b>	1 x 1W
<b>Fixture Finish:</b>	Silver Grey
<b>Color Temperatures:</b>	3000K (Warm White)
<b>Material:</b>	Aluminum
<b>IP Rating:</b>	IP20 (Indoor)
<b>Rendering Index:</b>	CRI>80
<b>Luminous Flux:</b>	80-100 lumens
<b>Wire Size:</b>	508 mm (20 in)
<b>Dimensions:</b>	30 x 11 x 25 mm (1.18 x 0.43 x 0.96 in)
<b>Cut Size Diameter:</b>	24 mm (0.93 in)
<b>Certification:</b>	CE



**SKU#: 666561404468**

### Features

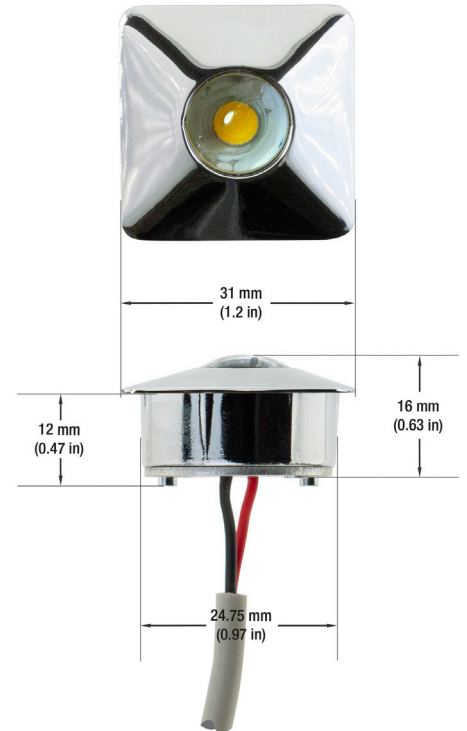
- Widely applicable in residential lighting, office lighting, display case lighting, art lighting, cabinet lighting and much more.
- The adjustable fixture acts as a good shooting point for showcasing the desired objects.
- Dissipates very less heat and is safe to touch.



Color

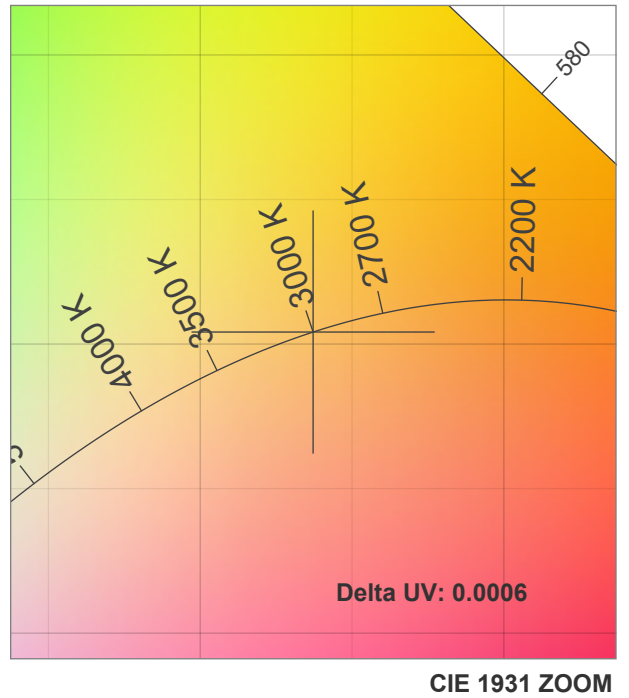
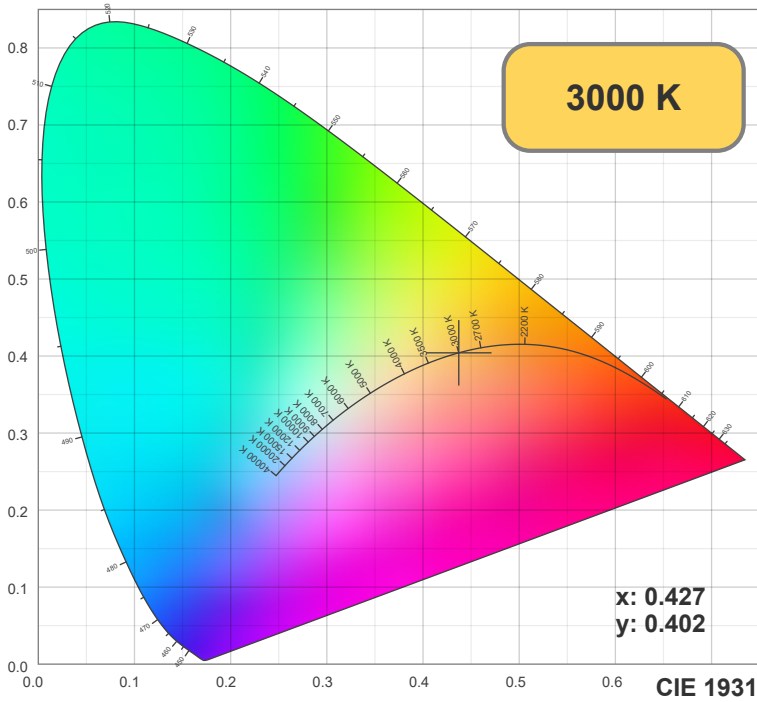
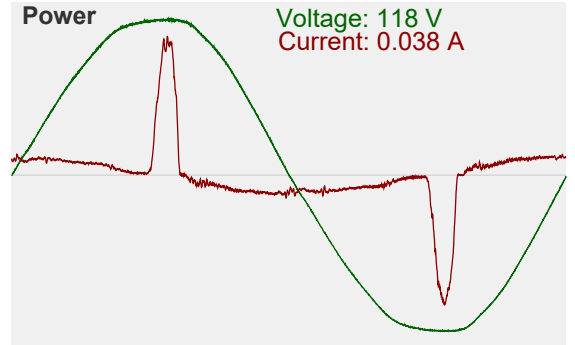
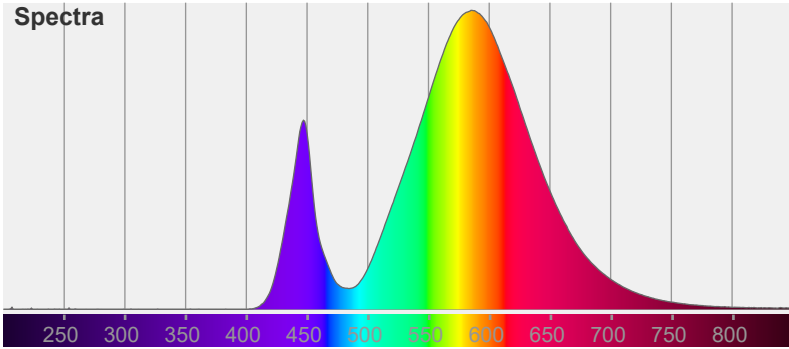


CIE1931  
x: 0.427  
y: 0.402

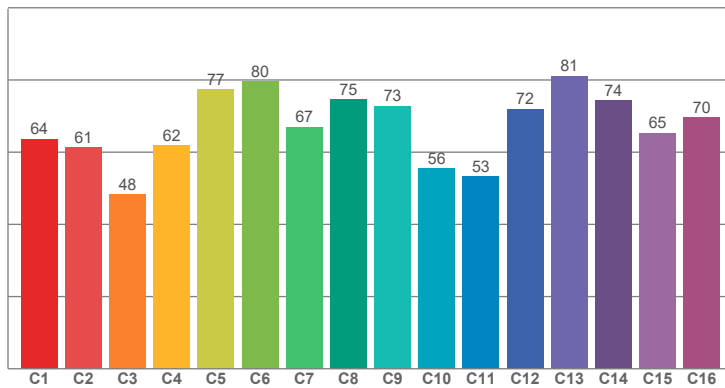


### Disclaimer

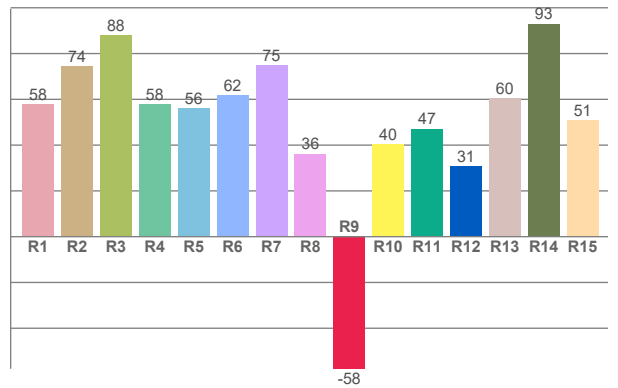
The data and information contained in this specification sheet are subject to change without notice; the ratings supplied are provided based on the product manufacturer. The information contained in this specification sheet should not be considered a warranty, expressed or implied, including, but not limited to, a warranty of merchantability or fitness for a particular purpose. In no event shall LED Lights and Parts be liable for any incidental or consequential damages resulting from the use, misuse, or inability to use the product. This exclusion applies regardless of whether such damages are sought based on breach of warranty, breach of contract, negligence, strict liability in tort, or any other legal theory.



**TM30: 66.6**



**CRI: 63.3 (R1-R8)**





CRI R values, only R1-R8 are used to calculate final CRI value

R1	R2	R3	R4	R5	R6	R7	R8	R9	R10	R11	R12	R13	R14	R15
57.93	74.35	87.88	57.77	55.95	61.73	74.90	36.10	-57.71	40.32	47.14	30.73	60.34	92.95	50.91

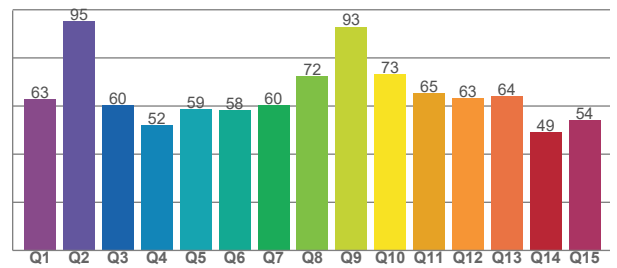
TM30 C values, 16 binned values out of total of 99 C values

C1	C2	C3	C4	C5	C6	C7	C8	C9	C10	C11	C12	C13	C14	C15	C16
63.69	61.24	48.31	61.89	77.29	79.58	67.00	74.59	72.85	55.52	53.37	72.01	81.08	74.37	65.37	69.71

CQS Q values

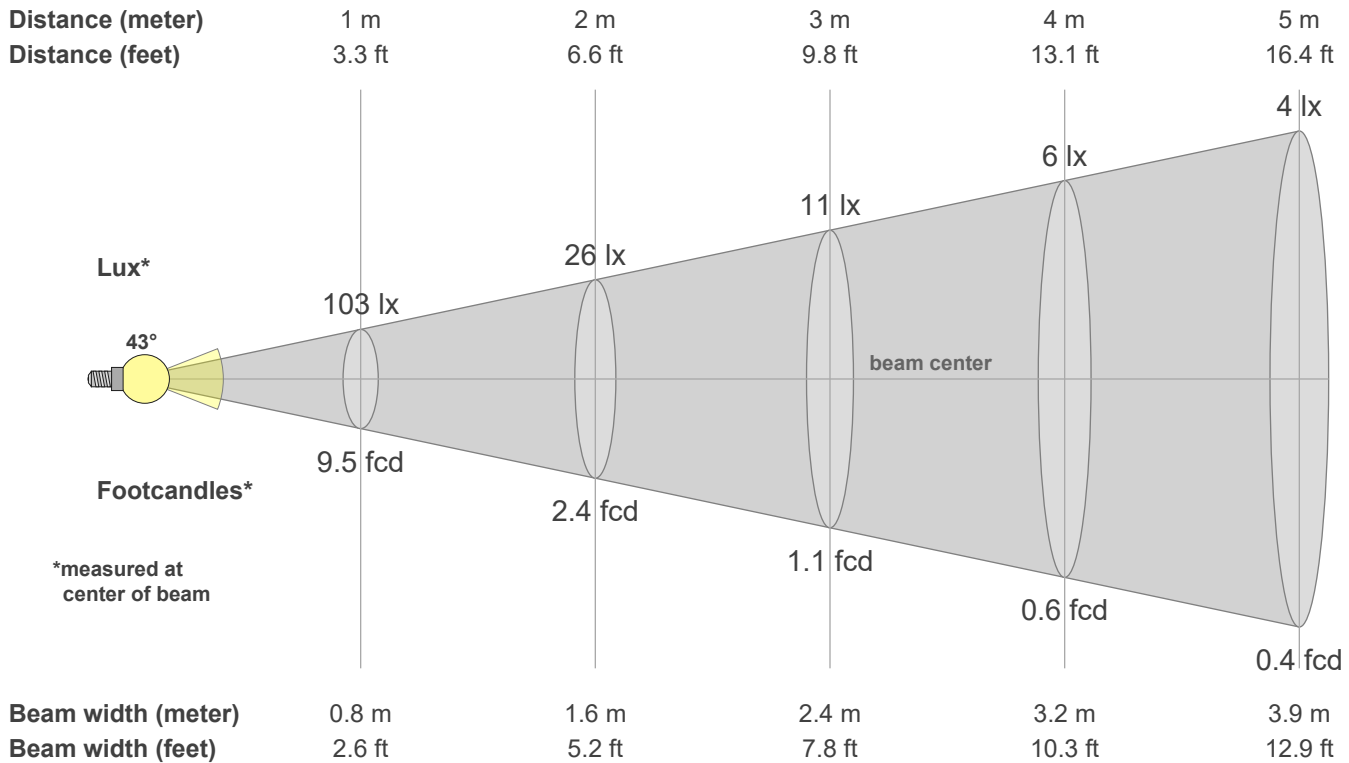
Q1	Q2	Q3	Q4	Q5	Q6	Q7	Q8	Q9	Q10	Q11	Q12	Q13	Q14	Q15
62.99	95.44	60.41	52.04	58.63	58.21	60.40	72.34	93.01	73.42	65.21	63.12	64.08	49.14	53.98

CQS: 63.1



## Color parameters

CCT	CRI	CRI R9	TM30 Rf	TM30 Rg	CQS	x	y	u	v	Duv
3000 K	63.3	-57.7	66.6	91.9	63.1	0.4	0.4	0.3	0.3	0.0006



## Intensities in 0° c-plane

0°	2°	4°	6°	8°	10°	12°	14°	16°	18°	20°	22°	24°	26°	28°	30°	32°	34°	36°	38°
103	103	104	105	109	114	116	112	102	89	72	54	37	21	9	4	2	1	1	1
100%	100%	101%	103%	106%	111%	113%	109%	100%	86%	70%	52%	36%	20%	8%	3%	2%	1%	1%	1%



### Intensities in 90° c-plane

0°	2°	4°	6°	8°	10°	12°	14°	16°	18°	20°	22°	24°	26°	28°	30°	32°	34°	36°	38°
103	103	104	105	109	114	116	112	102	89	72	54	37	21	9	4	2	1	1	1
100%	100%	101%	103%	106%	111%	113%	109%	100%	86%	70%	52%	36%	20%	8%	3%	2%	1%	1%	1%

### Intensities in 180° c-plane

0°	2°	4°	6°	8°	10°	12°	14°	16°	18°	20°	22°	24°	26°	28°	30°	32°	34°	36°	38°
103	103	104	105	109	114	116	112	102	89	72	54	37	21	9	4	2	1	1	1
100%	100%	101%	103%	106%	111%	113%	109%	100%	86%	70%	52%	36%	20%	8%	3%	2%	1%	1%	1%

### Intensities in 270° c-plane

0°	2°	4°	6°	8°	10°	12°	14°	16°	18°	20°	22°	24°	26°	28°	30°	32°	34°	36°	38°
103	103	104	105	109	114	116	112	102	89	72	54	37	21	9	4	2	1	1	1
100%	100%	101%	103%	106%	111%	113%	109%	100%	86%	70%	52%	36%	20%	8%	3%	2%	1%	1%	1%

<b>Beam angle 50%</b>	<b>Field angle 10%</b>	<b>Cutoff angle 2.5%</b>	<b>Intensity ratio in 120° cone</b>	<b>Intensity ratio in 90° cone</b>
<b>43.0°</b>	<b>54.8°</b>	<b>61.3°</b>	<b>92.6%</b>	<b>88.8%</b>