



LED LANDSCAPING LIGHT 3 X 1W SPOT LIGHT 6000K (COOL WHITE)

Specifications

Input Voltage:	12V DC
Power Consumption:	5W
Brightness:	500-550Lm
Light Source:	3 x 1W LEDs
Color Temperature:	6000K (Cool White)
Beam Angle:	30°
Operating Temperature:	-40°F ~ 140°F
IP Rating:	IP65 (Suitable for Wet Location)
Cable Size:	Length: 90 cm (35 in) Diameter: Ø 5.5 mm (0.21 in) Gauge: 18AWG
Dimensions:	Diameter: Ø 75 mm (2.93 in) Depth: 102 mm (4 in) Height: 92 mm (3.62 in)



SKU: 666561404062

Features

- This product is equipped with a spike for mounting in the ground.
- Also, come in 3000K color temperature (Warm White).



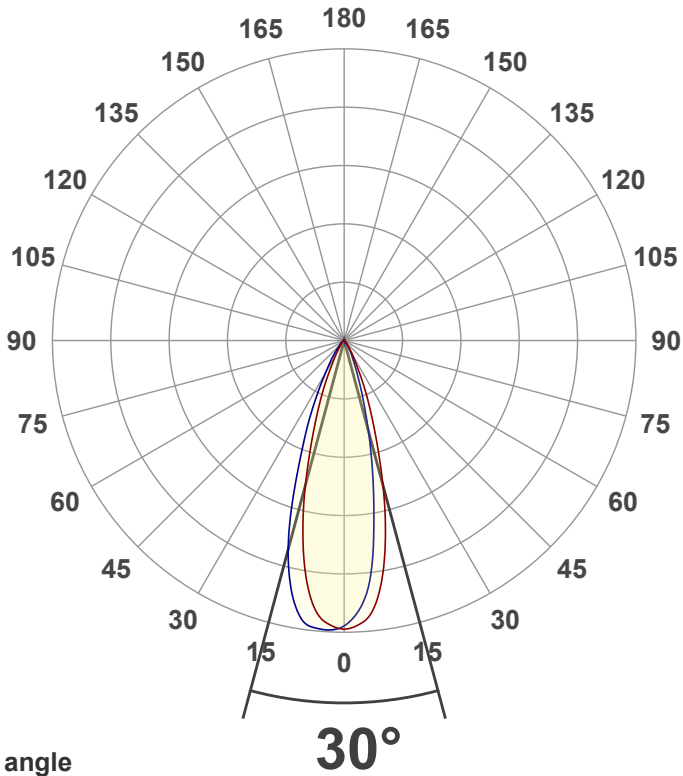
Disclaimer

The data and information contained in this specification sheet are subject to change without notice; the ratings supplied are provided based on the product manufacturer. The information contained in this specification sheet should not be considered a warranty, expressed or implied, including, but not limited to, a warranty of merchantability or fitness for a particular purpose. In no event shall LED Lights and Parts be liable for any incidental or consequential damages resulting from the use, misuse, or inability to use the product. This exclusion applies regardless of whether such damages are sought based on breach of warranty, breach of contract, negligence, strict liability in tort, or any other legal theory.

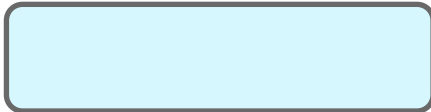


LED Lights and Parts

WORLD OF LED LIGHTS

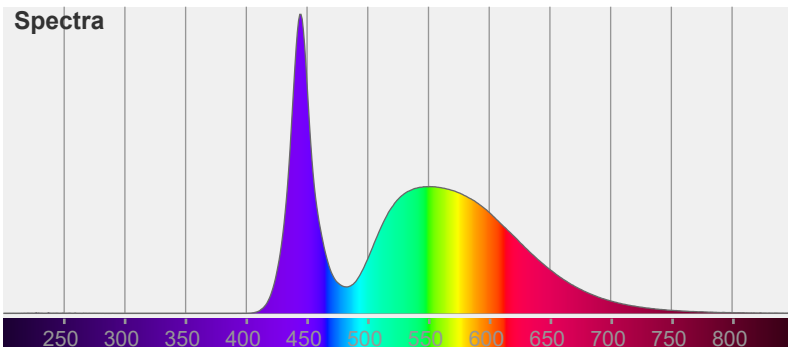


Color

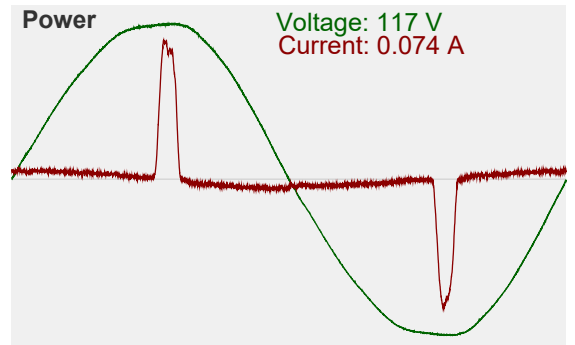


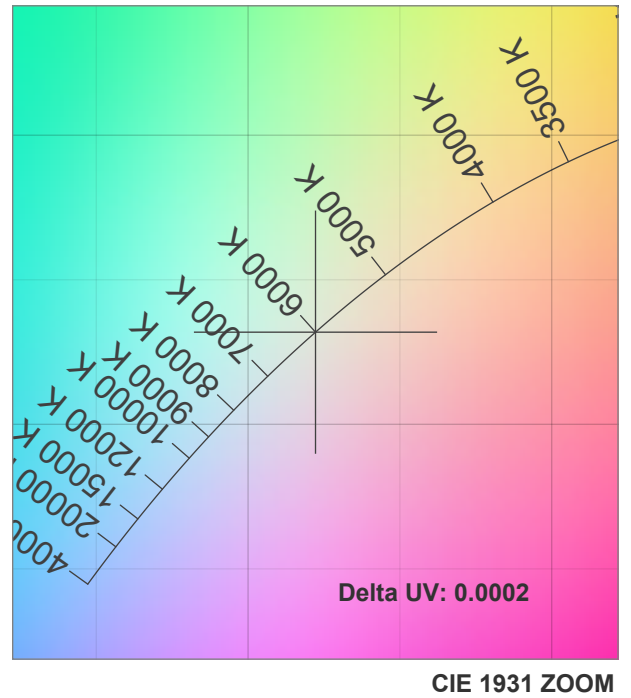
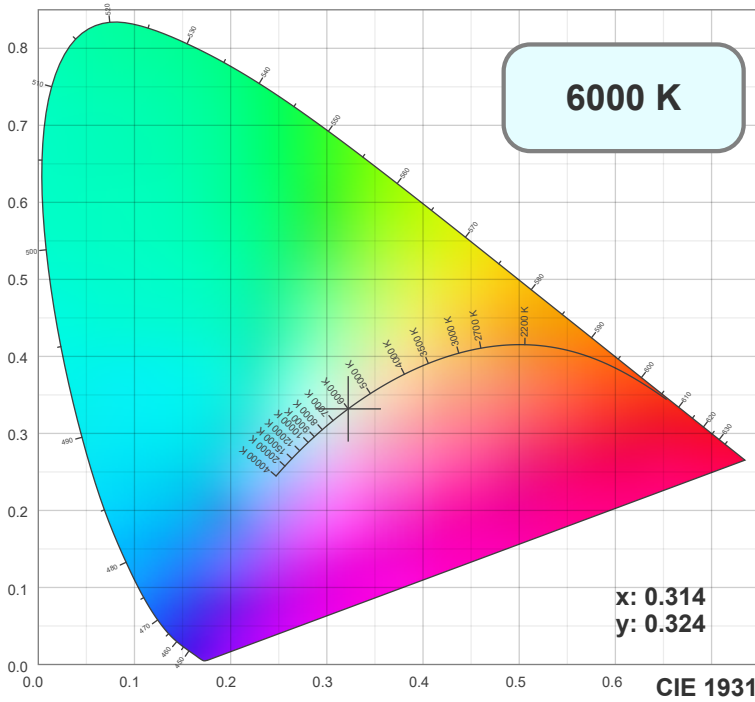
CIE1931
x: 0.314
y: 0.324

Spectra

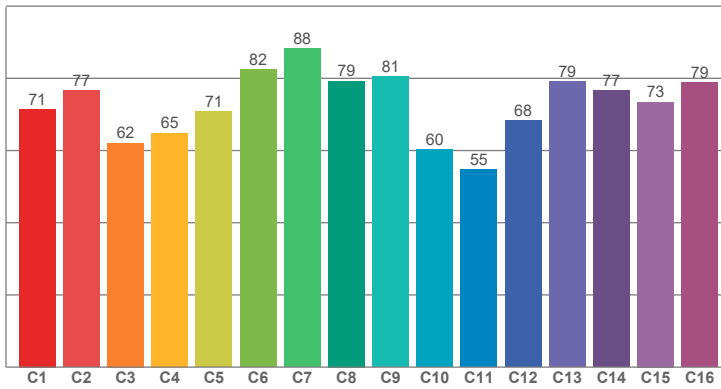


Power

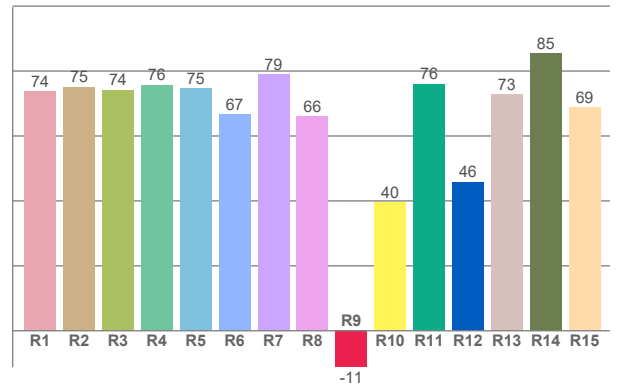




TM30: 72.3



CRI: 73.1 (R1-R8)



CRI R values, only R1-R8 are used to calculate final CRI value

R1	R2	R3	R4	R5	R6	R7	R8	R9	R10	R11	R12	R13	R14	R15
73.76	75.12	74.19	75.77	74.69	66.74	78.86	65.96	-11.20	39.56	76.00	45.88	72.77	85.36	68.84

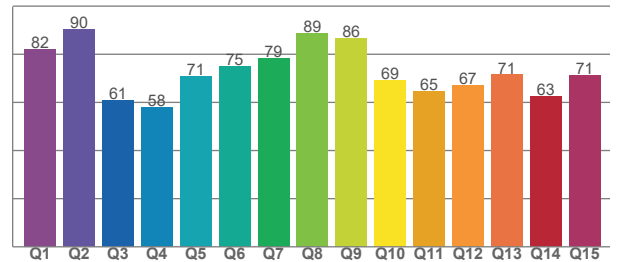
TM30 C values, 16 binned values out of total of 99 C values

C1	C2	C3	C4	C5	C6	C7	C8	C9	C10	C11	C12	C13	C14	C15	C16
71.49	76.55	62.12	64.89	70.81	82.41	88.28	79.27	80.56	60.34	54.78	68.25	79.12	76.64	73.46	78.91

CQS Q values

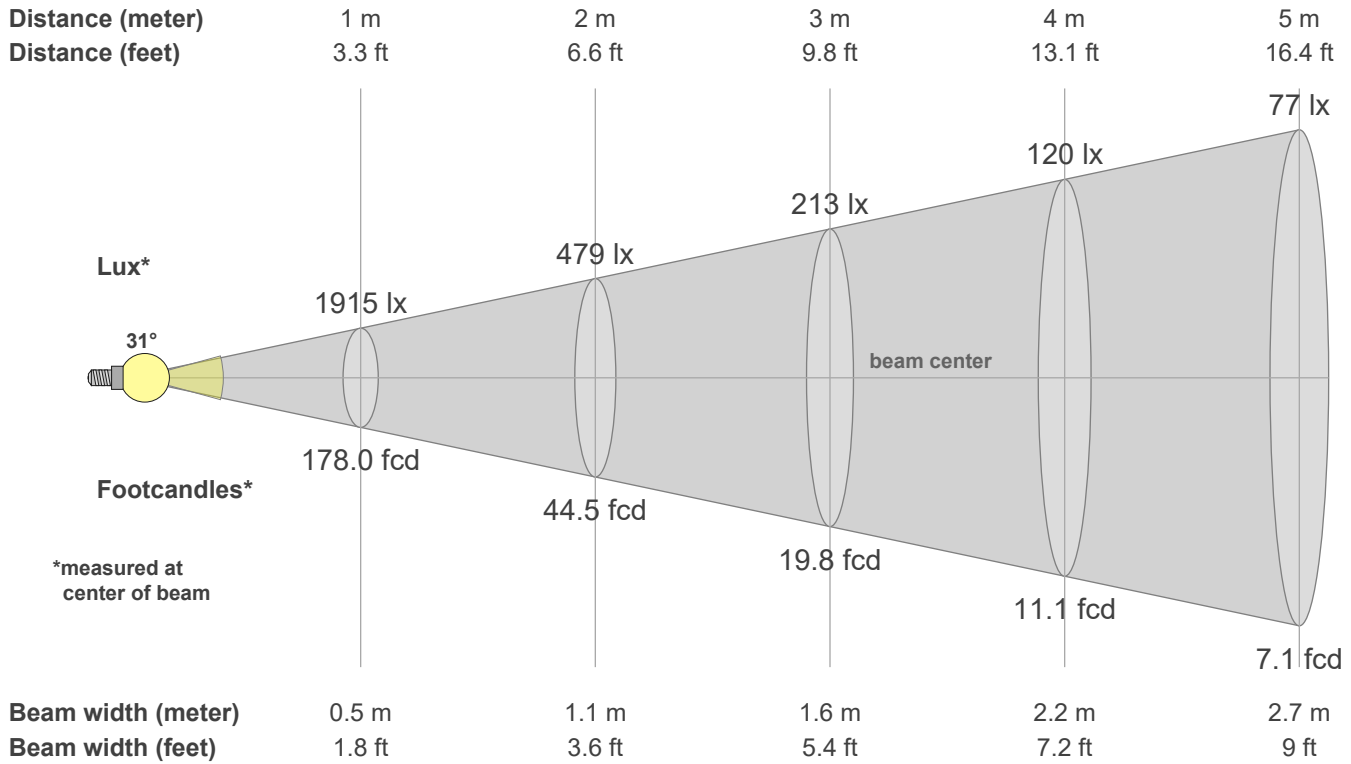
Q1	Q2	Q3	Q4	Q5	Q6	Q7	Q8	Q9	Q10	Q11	Q12	Q13	Q14	Q15
82.22	90.33	61.04	57.95	70.87	75.13	78.52	88.61	86.49	69.37	64.79	67.31	71.48	62.58	71.12

CQS: 71.4



Color parameters

CCT	CRI	CRI R9	TM30 Rf	TM30 Rg	CQS	x	y	u	v	Duv
6000 K	73.1	-11.2	72.3	97.1	71.4	0.3	0.3	0.2	0.3	-0.0035



Intensities in 0° c-plane

0°	2°	4°	6°	8°	10°	12°	14°	16°	18°	20°	22°	24°	26°	28°	30°	32°	34°	36°	38°
1915	1913	1880	1813	1690	1524	1325	1111	891	696	537	411	303	213	154	116	87	64	48	36
100%	100%	98%	95%	88%	80%	69%	58%	47%	36%	28%	21%	16%	11%	8%	6%	5%	3%	2%	2%

Intensities in 90° c-plane

0°	2°	4°	6°	8°	10°	12°	14°	16°	18°	20°	22°	24°	26°	28°	30°	32°	34°	36°	38°
1915	1848	1759	1617	1396	1143	919	718	542	405	298	219	161	123	98	74	52	34	21	12
100%	96%	92%	84%	73%	60%	48%	37%	28%	21%	16%	11%	8%	6%	5%	4%	3%	2%	1%	1%

Intensities in 180° c-plane

0°	2°	4°	6°	8°	10°	12°	14°	16°	18°	20°	22°	24°	26°	28°	30°	32°	34°	36°	38°
1915	1913	1880	1813	1690	1524	1325	1111	891	696	537	411	303	213	154	116	87	64	48	36
100%	100%	98%	95%	88%	80%	69%	58%	47%	36%	28%	21%	16%	11%	8%	6%	5%	3%	2%	2%

Intensities in 270° c-plane

0°	2°	4°	6°	8°	10°	12°	14°	16°	18°	20°	22°	24°	26°	28°	30°	32°	34°	36°	38°
1915	1930	1935	1927	1902	1823	1699	1537	1339	1106	884	709	566	436	332	250	193	153	120	90
100%	101%	101%	101%	99%	95%	89%	80%	70%	58%	46%	37%	30%	23%	17%	13%	10%	8%	6%	5%

Beam angle 50%	Field angle 10%	Cutoff angle 2.5%	Intensity ratio in 120° cone	Intensity ratio in 90° cone
30.7°	53.9°	73.9°	99.5%	97.0%