



LED LANDSCAPING LIGHT 5 X 1W SPOT LIGHT 6000K (COOL WHITE)

Specifications

Input Voltage:	12V DC
Power Consumption:	5W
Brightness:	500-550lm
Light Source:	5 x 1W LEDs
Color Temperature:	6000K (Cool White)
Beam Angle:	30°
Operating Temperature:	-40°F ~ 140°F
IP Rating:	IP65 (Suitable for Wet Location)
Cable Size:	Length: 90 cm (35 in) Diameter: Ø 7 mm (0.27 in) Gauge: 18AWG
Dimensions:	Diameter: Ø 93 mm (3.65 in) Depth: 102 mm (4 in) Height: 108 mm (4.25 in)



SKU: 666561404048

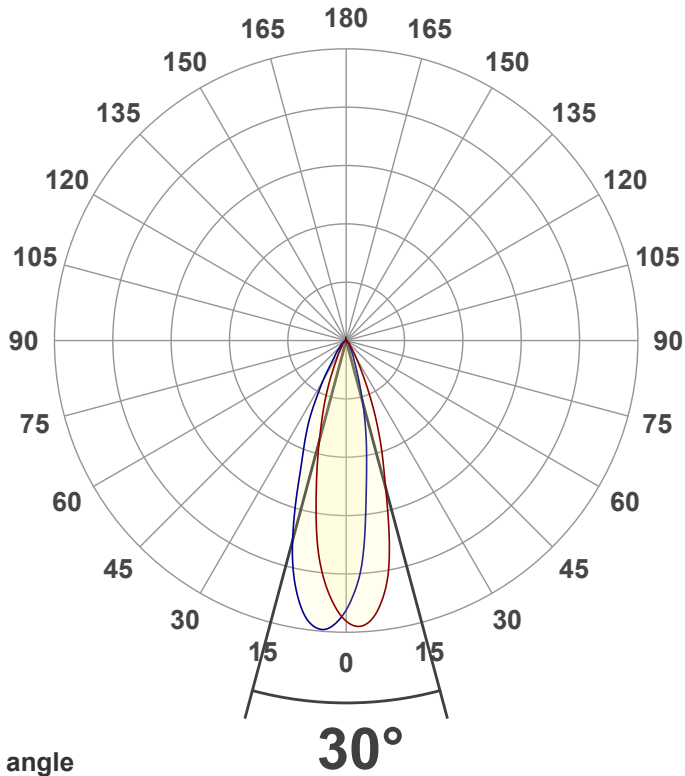
Features

- This product is equipped with a spike for mounting in the ground.
- Also, come in 3000K color temperature (Warm White).

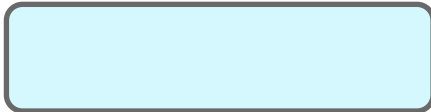


Disclaimer

The data and information contained in this specification sheet are subject to change without notice; the ratings supplied are provided based on the product manufacturer. The information contained in this specification sheet should not be considered a warranty, expressed or implied, including, but not limited to, a warranty of merchantability or fitness for a particular purpose. In no event shall LED Lights and Parts be liable for any incidental or consequential damages resulting from the use, misuse, or inability to use the product. This exclusion applies regardless of whether such damages are sought based on breach of warranty, breach of contract, negligence, strict liability in tort, or any other legal theory.

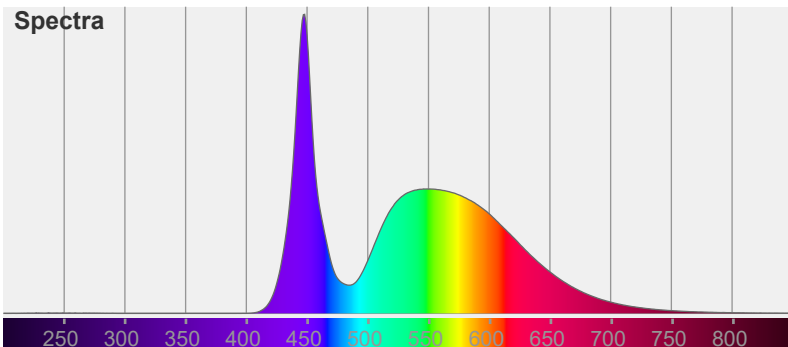


Color

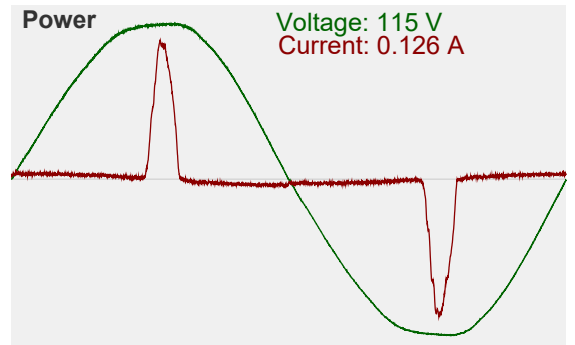


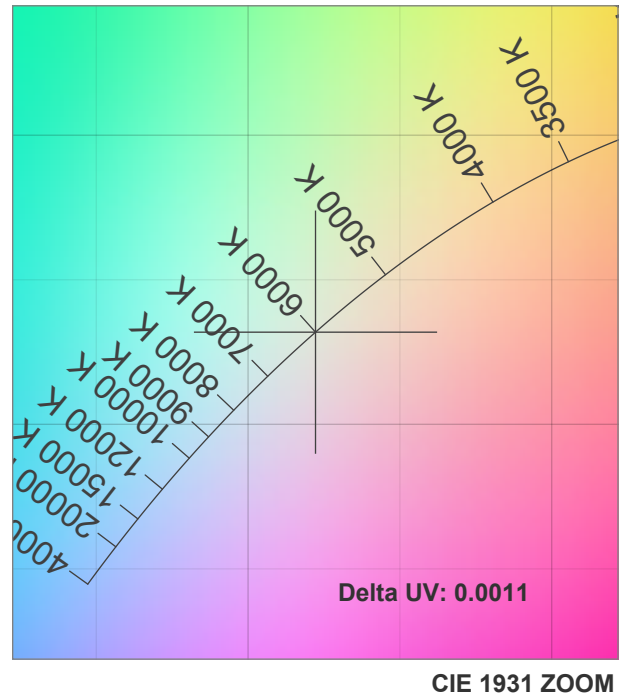
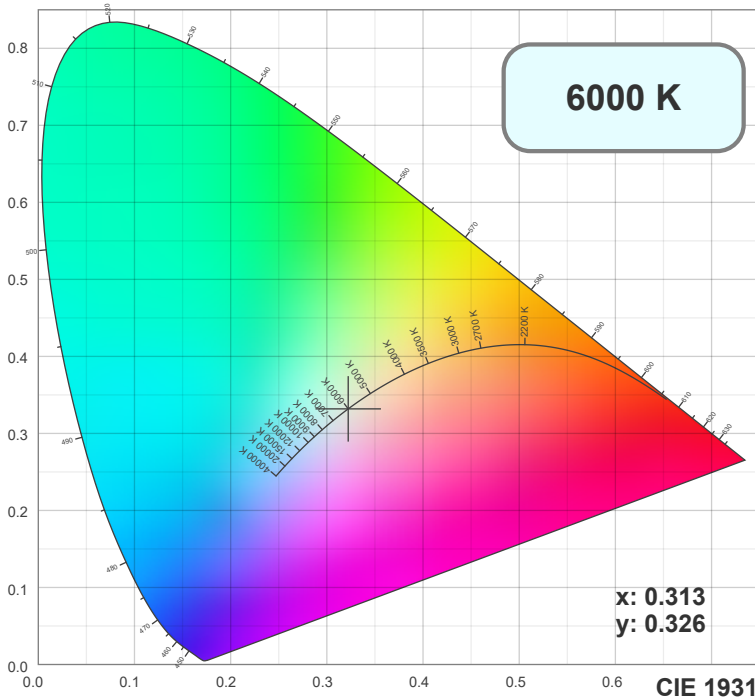
CIE1931
x: 0.313
y: 0.326

Spectra

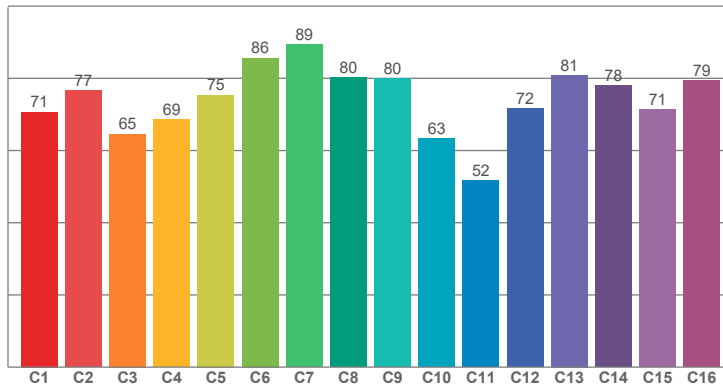


Power

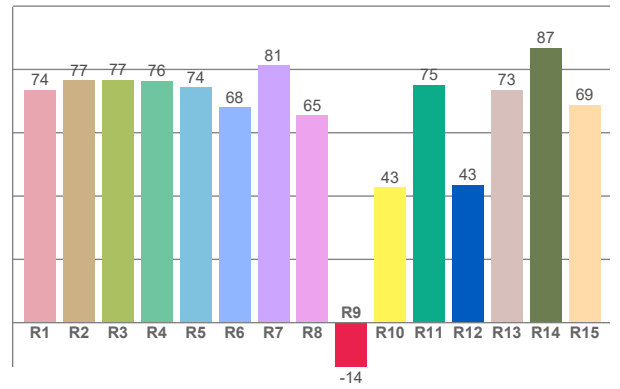




TM30: 73.7



CRI: 74.0 (R1-R8)



CRI R values, only R1-R8 are used to calculate final CRI value

R1	R2	R3	R4	R5	R6	R7	R8	R9	R10	R11	R12	R13	R14	R15
73.61	76.62	76.67	76.38	74.31	67.99	81.26	65.40	-14.04	42.76	75.08	43.49	73.50	86.83	68.83

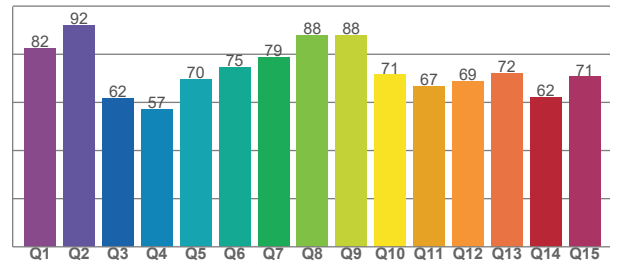
TM30 C values, 16 binned values out of total of 99 C values

C1	C2	C3	C4	C5	C6	C7	C8	C9	C10	C11	C12	C13	C14	C15	C16
70.66	76.73	64.61	68.52	75.38	85.65	89.45	80.30	79.95	63.25	51.75	71.67	80.90	78.11	71.30	79.38

CQS Q values

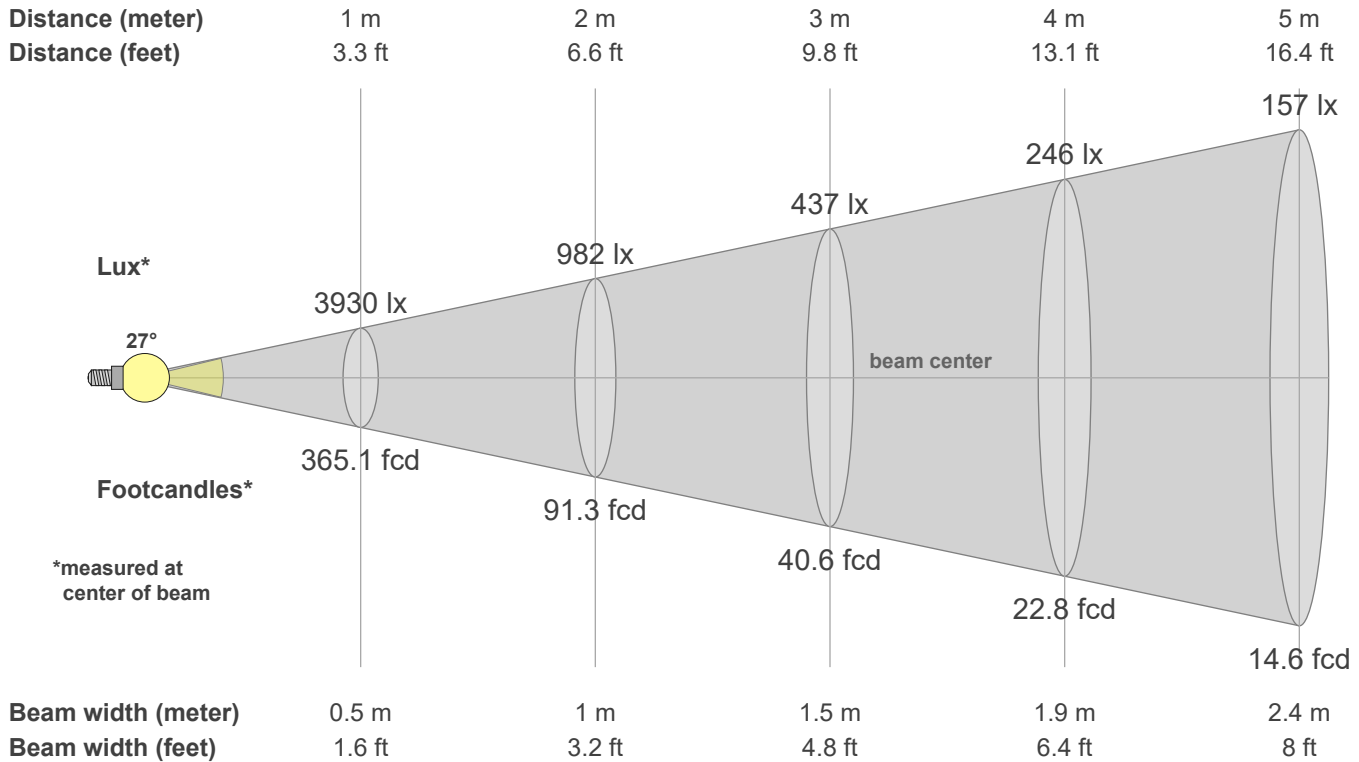
Q1	Q2	Q3	Q4	Q5	Q6	Q7	Q8	Q9	Q10	Q11	Q12	Q13	Q14	Q15
82.49	92.14	61.90	57.07	69.74	74.67	78.91	87.73	88.01	71.47	66.56	68.71	72.22	62.04	70.65

CQS: 71.8



Color parameters

CCT	CRI	CRI R9	TM30 Rf	TM30 Rg	CQS	x	y	u	v	Duv
6000 K	74.0	-14.0	73.7	95.5	71.8	0.3	0.3	0.2	0.3	0.0021



Intensities in 0° c-plane

0°	2°	4°	6°	8°	10°	12°	14°	16°	18°	20°	22°	24°	26°	28°	30°	32°	34°	36°	38°
3930	4084	4063	3942	3727	3422	2966	2432	1979	1638	1317	1019	756	546	397	293	222	165	119	96
100%	104%	103%	100%	95%	87%	75%	62%	50%	42%	34%	26%	19%	14%	10%	7%	6%	4%	3%	2%

Intensities in 90° c-plane

0°	2°	4°	6°	8°	10°	12°	14°	16°	18°	20°	22°	24°	26°	28°	30°	32°	34°	36°	38°
3930	3579	3199	2625	2080	1683	1357	1052	784	569	411	305	240	186	142	110	91	80	73	67
100%	91%	81%	67%	53%	43%	35%	27%	20%	14%	10%	8%	6%	5%	4%	3%	2%	2%	2%	2%

Intensities in 180° c-plane

0°	2°	4°	6°	8°	10°	12°	14°	16°	18°	20°	22°	24°	26°	28°	30°	32°	34°	36°	38°
3930	3847	3612	3317	2942	2479	2038	1658	1328	1070	847	644	470	346	270	220	175	145	122	102
100%	98%	92%	84%	75%	63%	52%	42%	34%	27%	22%	16%	12%	9%	7%	6%	4%	4%	3%	3%

Intensities in 270° c-plane

0°	2°	4°	6°	8°	10°	12°	14°	16°	18°	20°	22°	24°	26°	28°	30°	32°	34°	36°	38°
3930	4034	4133	4125	4022	3816	3532	3173	2728	2264	1868	1595	1359	1110	857	666	486	354	285	237
100%	103%	105%	105%	102%	97%	90%	81%	69%	58%	48%	41%	35%	28%	22%	17%	12%	9%	7%	6%

Beam angle 50%	Field angle 10%	Cutoff angle 2.5%	Intensity ratio in 120° cone	Intensity ratio in 90° cone
27.3°	52.8°	76.9°	98.9%	95.0%