



# HOW TO UPDATE

# ARCADE1UP™

## OUTRUN

## Firmware Update



# **WARNING:**

**THIS UPDATE IS FOR THE OUTRUN ARCADE1UP ONLY.  
DO NOT APPLY THIS UPDATE TO OTHER ARCADE1UPS.  
THIS UPDATE WILL DAMAGE OTHER ARCADE1UPS.**





# YOU WILL NEED



**Arcade1Up OutRun.  
-Duh.**



**Phillips Head Screwdriver  
-To remove the back panel.**



**or**



**Flash Drive with a USB to Micro USB Cable  
or a Dual USB/Micro USB Flash Drive.  
-To copy the Update from PC to Arcade1Up.**

# Download Firmware Update

Click support tab



IMPORTANT SHIPPING INFORMATION REGARDING COVID-19

ARCADE1UP Games Accessories & Parts Submissions Retailers News Support

USD

Customer Service  
FAQ  
Return Policy  
Warranty Information  
Product Registration  
Game Instructions  
Software Updates  
Retailer Support

ONE PLACE. LOTS OF GAMES. INFINITE FUN.  
**Infinity Game Table**  
Back Us on Kickstarter NOW to reserve your Table!  
Learn More!

Arcade Machines View All  
Accessories & Parts View All  
Latest News View

ALL ARCADE1UP GAME MACHINES

Click software Updates



## WARNING:

THIS UPDATE IS FOR THE OUTRUN ARCADE1UP ONLY. DO NOT APPLY THIS UPDATE TO OTHER ARCADE1UPS. THIS UPDATE WILL DAMAGE OTHER ARCADE1UPS.



# Unzip Rad Rally Upgrade Patch

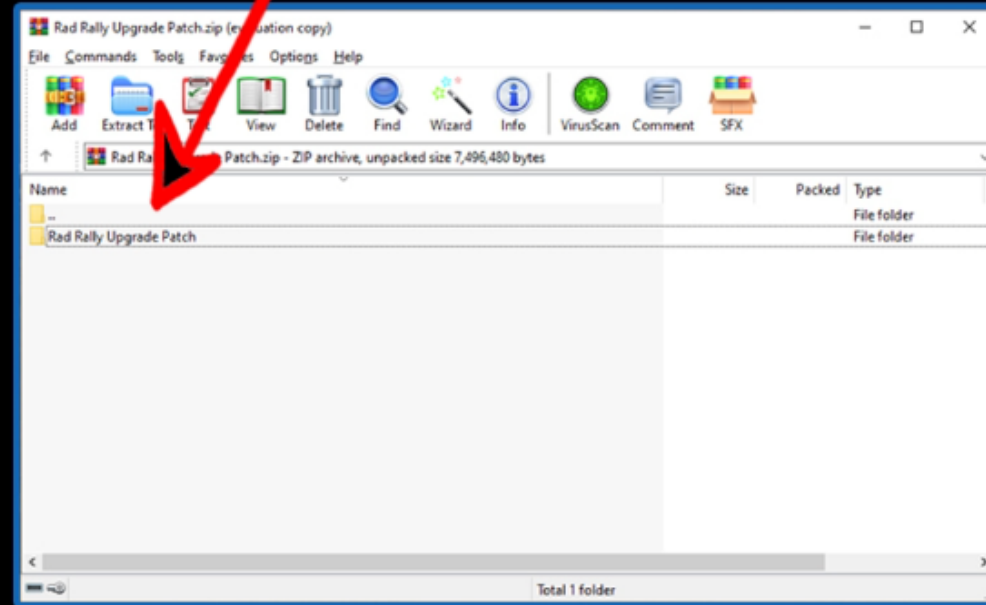


Download upgrade zipped file



Rad Rally  
Upgrade  
Patch

open Zipped file "Rad Rally Upgrade Patch"

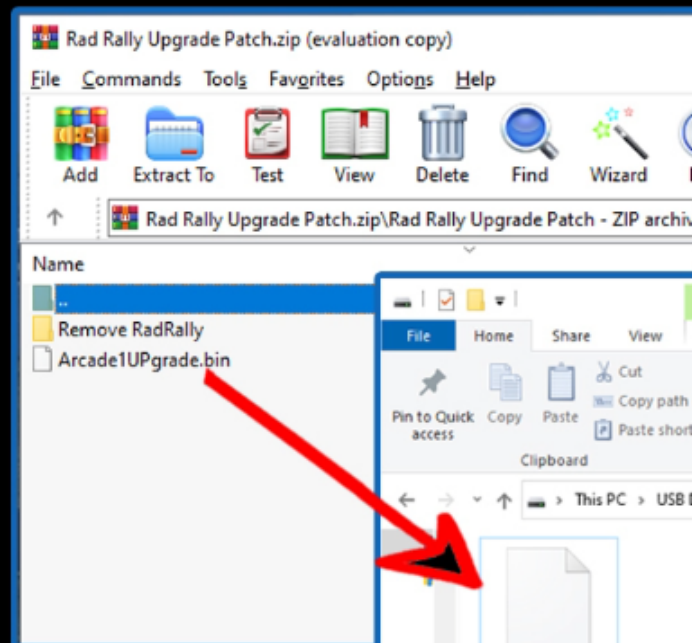


**WARNING:**

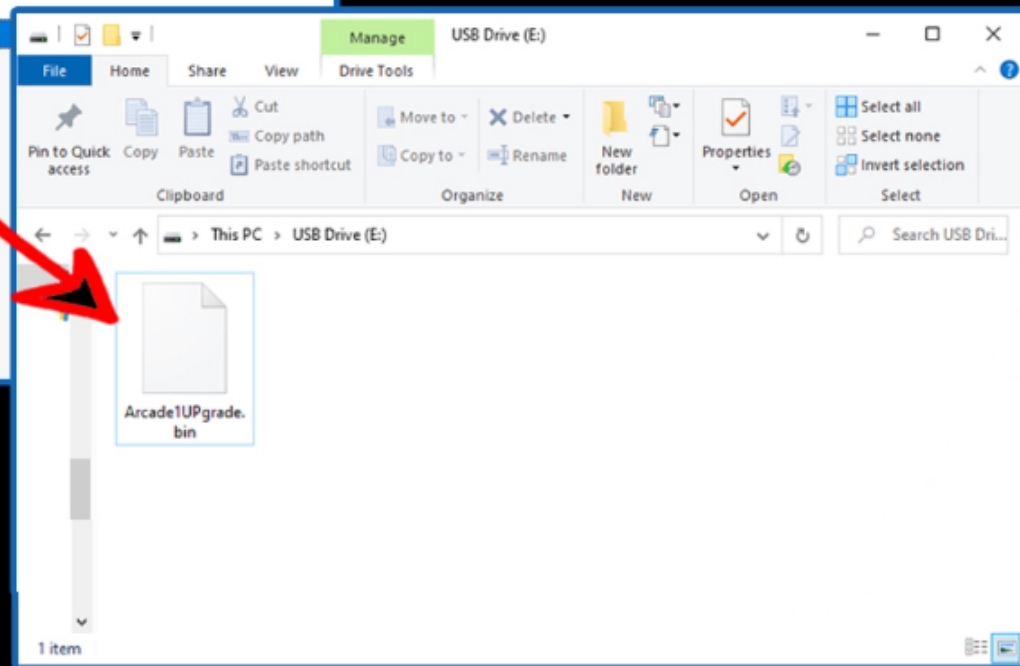
THIS UPDATE IS FOR THE OUTRUN ARCADE1UP ONLY. DO NOT APPLY THIS UPDATE TO OTHER ARCADE1UPS. THIS UPDATE WILL DAMAGE OTHER ARCADE1UPS.



# Copy Arcade1Upgrade.bin to USB Flash Drive



Drag "Arcade1UPgrade.bin" File to USB Drive (E:)



**WARNING:**

THIS UPDATE IS FOR THE OUTRUN ARCADE1UP ONLY. DO NOT APPLY THIS UPDATE TO OTHER ARCADE1UPS. THIS UPDATE WILL DAMAGE OTHER ARCADE1UPS.



# Insert Micro USB Flash Drive into Micro USB Port



Unplug the Power Cable



**WARNING:**

THIS UPDATE IS FOR THE OUTRUN ARCADE1UP ONLY. DO NOT APPLY THIS UPDATE TO OTHER ARCADE1UPS. THIS UPDATE WILL DAMAGE OTHER ARCADE1UPS.



# Insert Micro USB Flash Drive into Micro USB Port



Insert Micro USB into Micro USB Port



**WARNING:**

THIS UPDATE IS FOR THE OUTRUN ARCADE1UP ONLY. DO NOT APPLY THIS UPDATE TO OTHER ARCADE1UPS. THIS UPDATE WILL DAMAGE OTHER ARCADE1UPS.



# Installing the Firmware Update

Firmware Update will Install Automatically at this point

**DO NOT** Remove USB Drive  
**DO NOT** Turn Off Arcade1Up  
**DO NOT** Unplug Arcade1Up



**WARNING:**

THIS UPDATE IS FOR THE OUTRUN ARCADE1UP ONLY. DO NOT APPLY THIS UPDATE TO OTHER ARCADE1UPS. THIS UPDATE WILL DAMAGE OTHER ARCADE1UPS.



# Installing the Firmware Update



**WARNING:**

THIS UPDATE IS FOR THE OUTRUN ARCADE1UP ONLY. DO NOT APPLY THIS UPDATE TO OTHER ARCADE1UPs. THIS UPDATE WILL DAMAGE OTHER ARCADE1UPs.





# YOU DID IT!

- **Remove Micro USB Drive**
- **Replace the Back Panel**
- **Get back to Gaming**