

HOW TO UPDATE

ARCADE1UP™

MS PAC-MAN Head to Head

PC ONLY

Firmware Update



©BNEI



WARNING:

THIS UPDATE IS FOR THE Ms PAC-MAN HEAD TO HEAD ARCADE1UP ONLY.

DO NOT APPLY THIS UPDATE TO OTHER ARCADE1UPS.

THIS UPDATE WILL DAMAGE OTHER ARCADE1UPS.



YOU WILL NEED



**Arcade1Up Ms Pac-Man H2H
-Duh.**

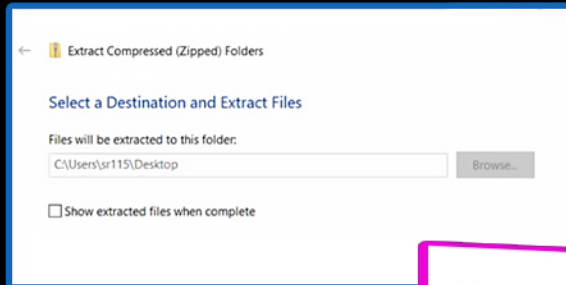
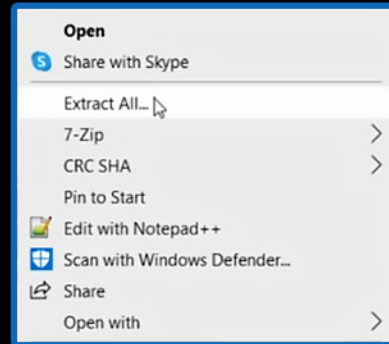
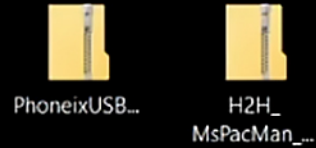


**Phillips Head Screwdriver
-To remove the top panels.**



**PC with a USB to Micro USB Cable
-To connect the Arcade1Up to a PC.**

Step 1: Download and Unzip Files



1

Download the “ Ms PacMan Updater ” file from the provided link and save the file to your Desktop.

2

After you downloaded the “ Ms PacMan Updater ” you will need to extract the files.

3

We strongly recommend using the native Windows extractor or 7-Zip/WinRAR to unzip(uncompress) your files as some zip tools may lead to complications and extra steps.

4

Right Click on the “Flash Tool” and select “Extract All”(native Windows Extractor)

5

Right Click on the “H2H_MsPacman_10 Games_Patch.zip” file then select “Extract”

Extract File to the Desktop

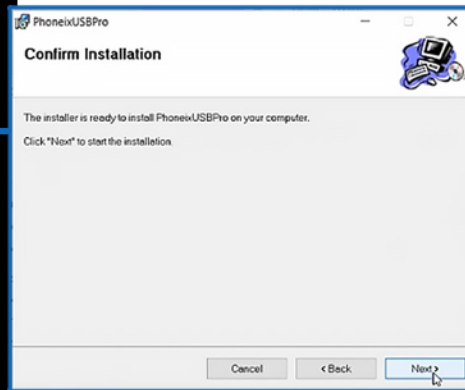
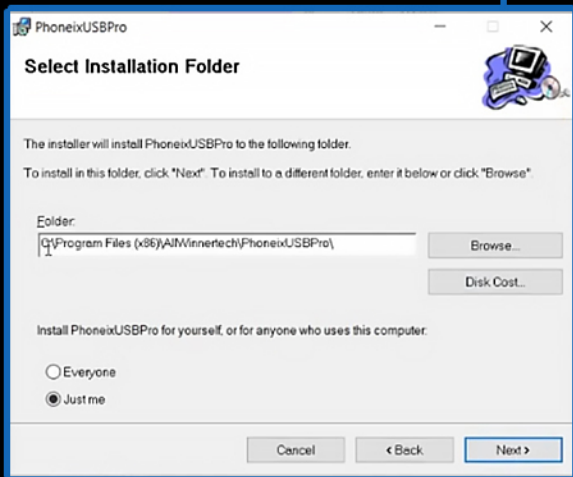
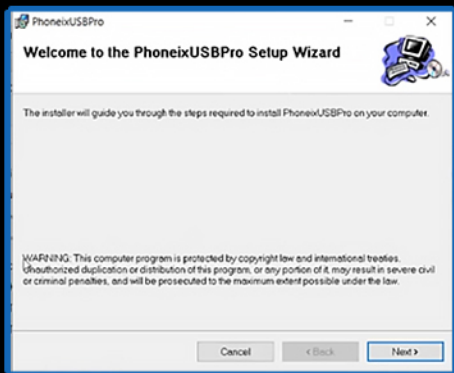
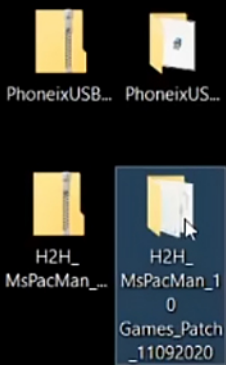


WARNING:

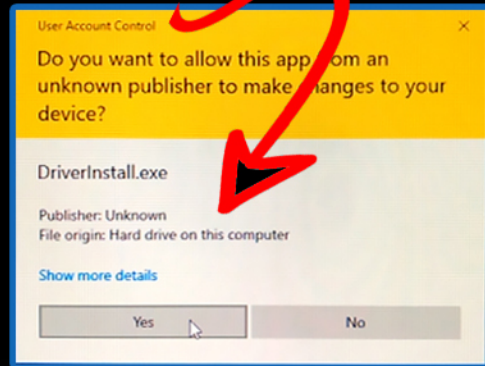
THIS UPDATE IS FOR THE Ms PAC-MAN Head to Head ARCADE1UP ONLY. DO NOT APPLY THIS UPDATE TO OTHER ARCADE1UPs. THIS UPDATE WILL DAMAGE OTHER ARCADE1UPs.

Step 2: Open Phoneix USB Pro

Open PhoneixUSBPRO_V4.0.0 Folder



If you see this menu - Select Yes



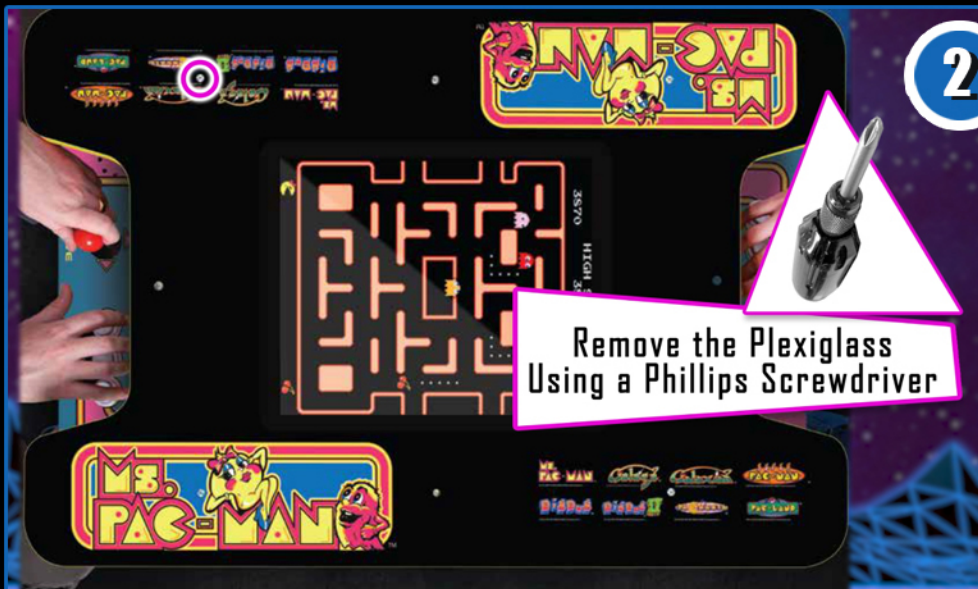
- 1 Open the Flash tool and double click on PhoneixUSBPro
- 2 BE CERTAIN TO READ THE WARNING
- 3 Allow the file to open in its root folder and be sure to set the permissions to just me - Then click Next to continue
- 4 Read the prompt and click next to continue



WARNING: THIS UPDATE IS FOR THE Ms PAC-MAN Head to Head ARCADE1UP ONLY. DO NOT APPLY THIS UPDATE TO OTHER ARCADE1UPs. THIS UPDATE WILL DAMAGE OTHER ARCADE1UPs.

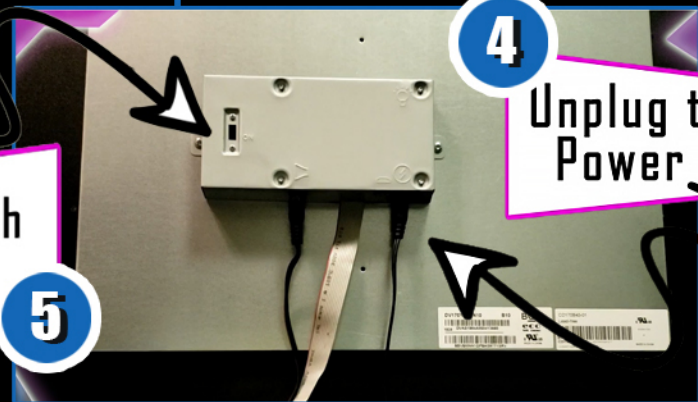
Step 4: Preparing Your Arcade

1 Remove the 4 screws on the Plexiglass with a Phillips Screwdriver



2 Remove the 4 screws underneath the Plexiglass with a Phillips Screwdriver

3 Lift the wooden panel to expose the PCB



4 Unplug the Power Cable

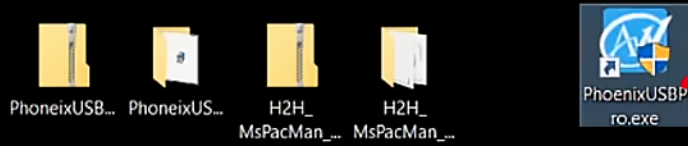
Flip Switch to OFF

5

WARNING:

THIS UPDATE IS FOR THE Ms PAC-MAN Head to Head ARCADE1UP ONLY. DO NOT APPLY THIS UPDATE TO OTHER ARCADE1UPS. THIS UPDATE WILL DAMAGE OTHER ARCADE1UPS.

Step 3: Open The Flash Tool



1

Double click the PhoenixUSB Pro icon to open the flash tool

2

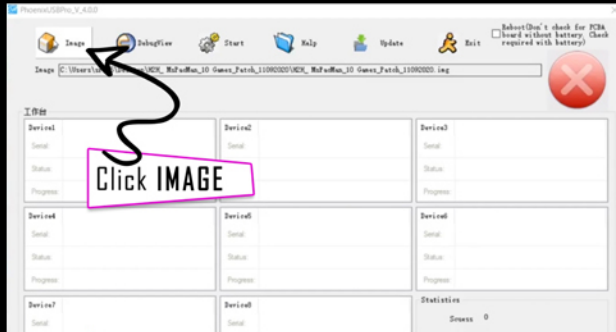
Select yes if you see the User Account Control Pop Up

3

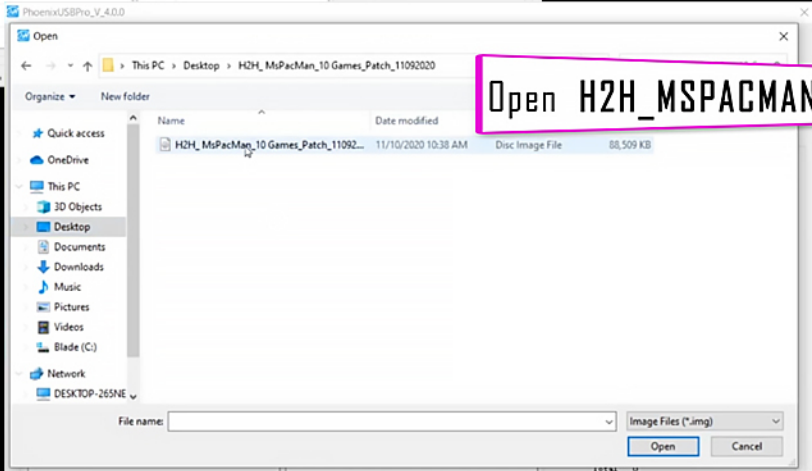
Click image in the top left corner and open the H2H_MsPacMan_10 Games_patch

4

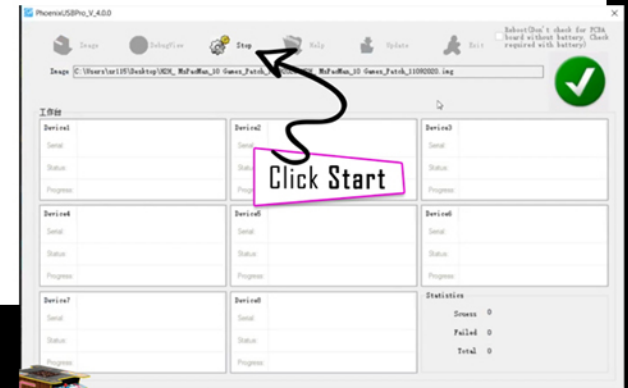
Click Start



Click IMAGE



Open H2H_MSPACMAN_10 GAMES_PATCH



Click Start



WARNING:

THIS UPDATE IS FOR THE Ms PAC-MAN Head to Head ARCADE1UP ONLY. DO NOT APPLY THIS UPDATE TO OTHER ARCADE1UPs. THIS UPDATE WILL DAMAGE OTHER ARCADE1UPs.

Step 5: Connect Micro USB

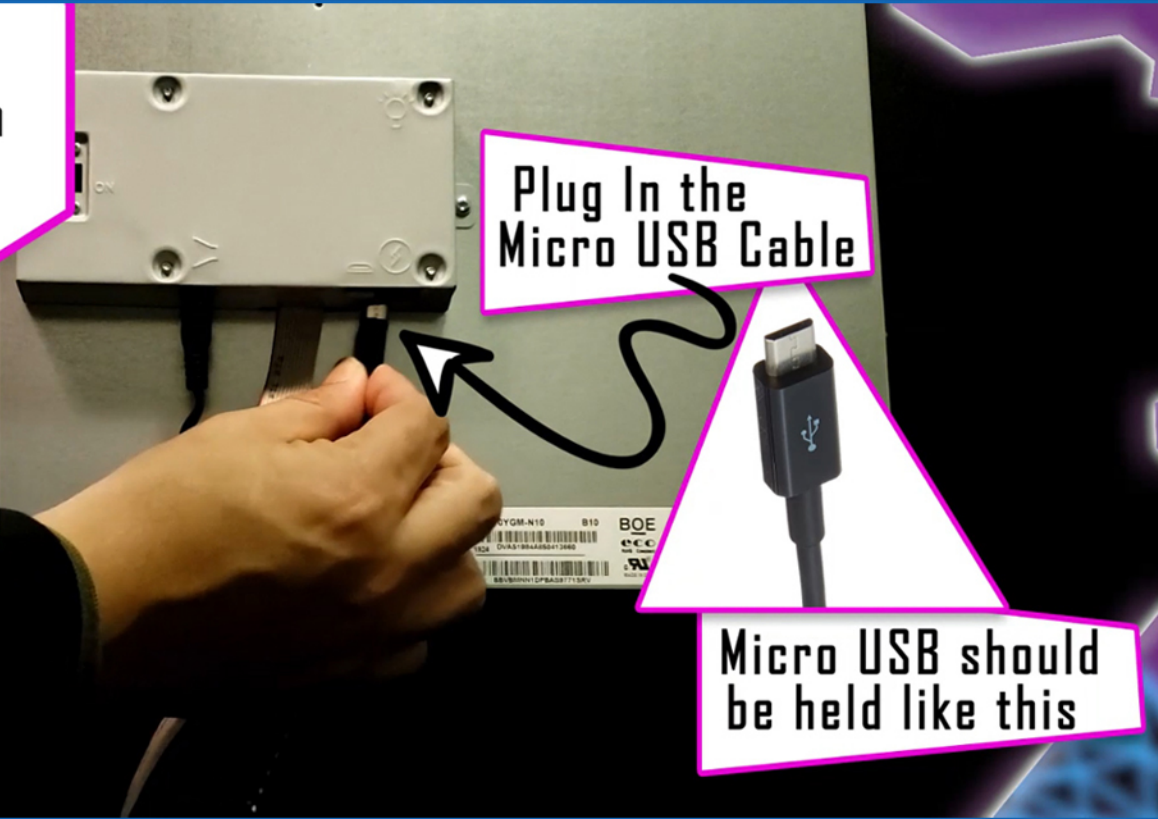
ARCADE1UP™

Connect your PC to your Arcade1Up with a USB to Micro USB Cable.

Face the Wide Side of the Micro USB toward the back of the monitor.

Plug In the Micro USB Cable

Micro USB should be held like this



WARNING:

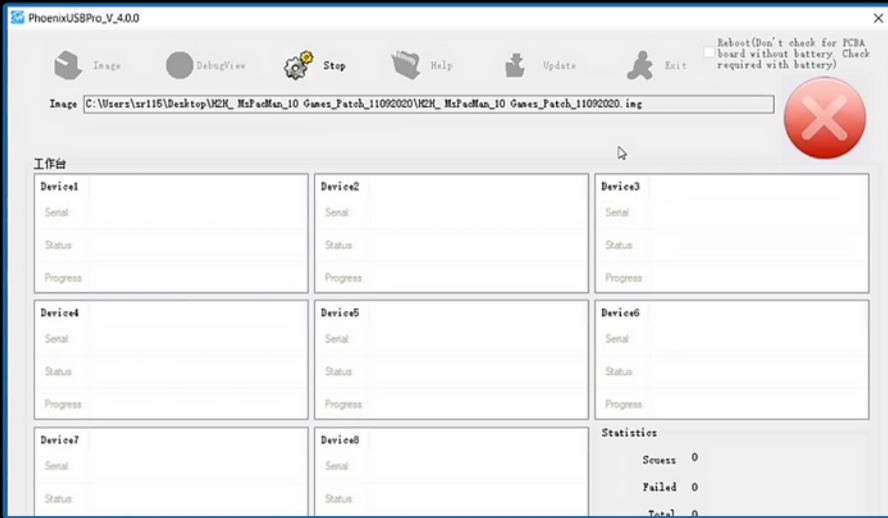
THIS UPDATE IS FOR THE Ms PAC-MAN Head to Head ARCADE1UP ONLY. DO NOT APPLY THIS UPDATE TO OTHER ARCADE1UPs. THIS UPDATE WILL DAMAGE OTHER ARCADE1UPs.



Step 6: Begin Flashing Process



1 Once Micro USB is plugged in it could take some time for the tool to begin flashing



3 Notice status update sin the first box

Select Stop once progres reaches 100%

工作台	
Device1	
Serial:	13EC11A9-E4DF-45bb-9698-3D548FCD6E36
Status:	down download1
Progress:	58%

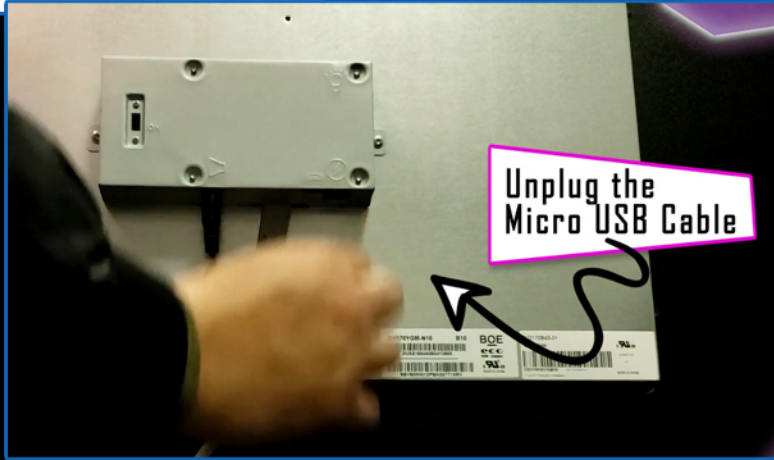


WARNING:
THIS UPDATE IS FOR THE Ms PAC-MAN Head to Head ARCADE1UP ONLY. DO NOT APPLY THIS UPDATE TO OTHER ARCADE1UPs. THIS UPDATE WILL DAMAGE OTHER ARCADE1UPs.

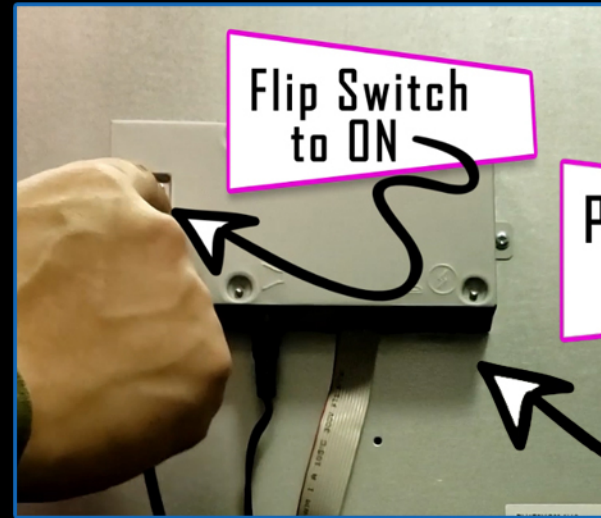
Step 7: Last Steps



1 Remove the Micro USB



2 Flip the Flash Switch to on



3



WARNING:

THIS UPDATE IS FOR THE Ms PAC-MAN Head to Head ARCADE1UP ONLY. DO NOT APPLY THIS UPDATE TO OTHER ARCADE1UPs. THIS UPDATE WILL DAMAGE OTHER ARCADE1UPs.

YOU DID IT!

- Replace the Top Panels
- Power on your Arcade1Up
- Get back to Gaming



GAME! ON!

WARNING:

THIS UPDATE IS FOR THE Ms PAC-MAN Head to Head ARCADE1UP ONLY. DO NOT APPLY THIS UPDATE TO OTHER ARCADE1UPs. THIS UPDATE WILL DAMAGE OTHER ARCADE1UPs.

