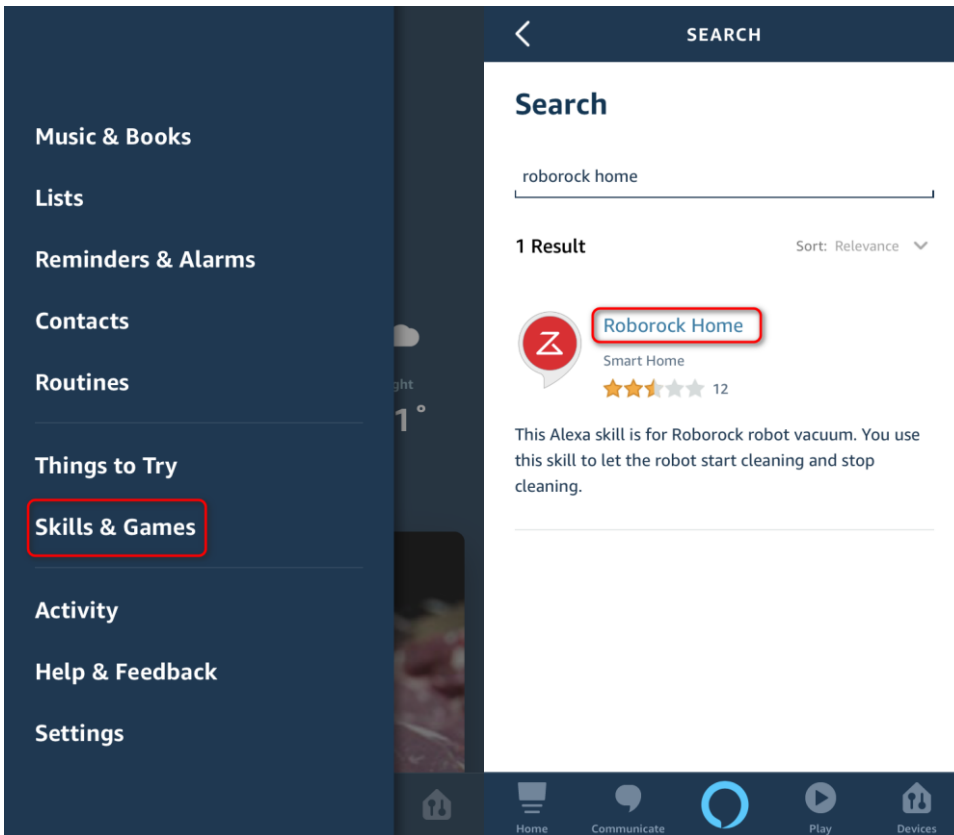
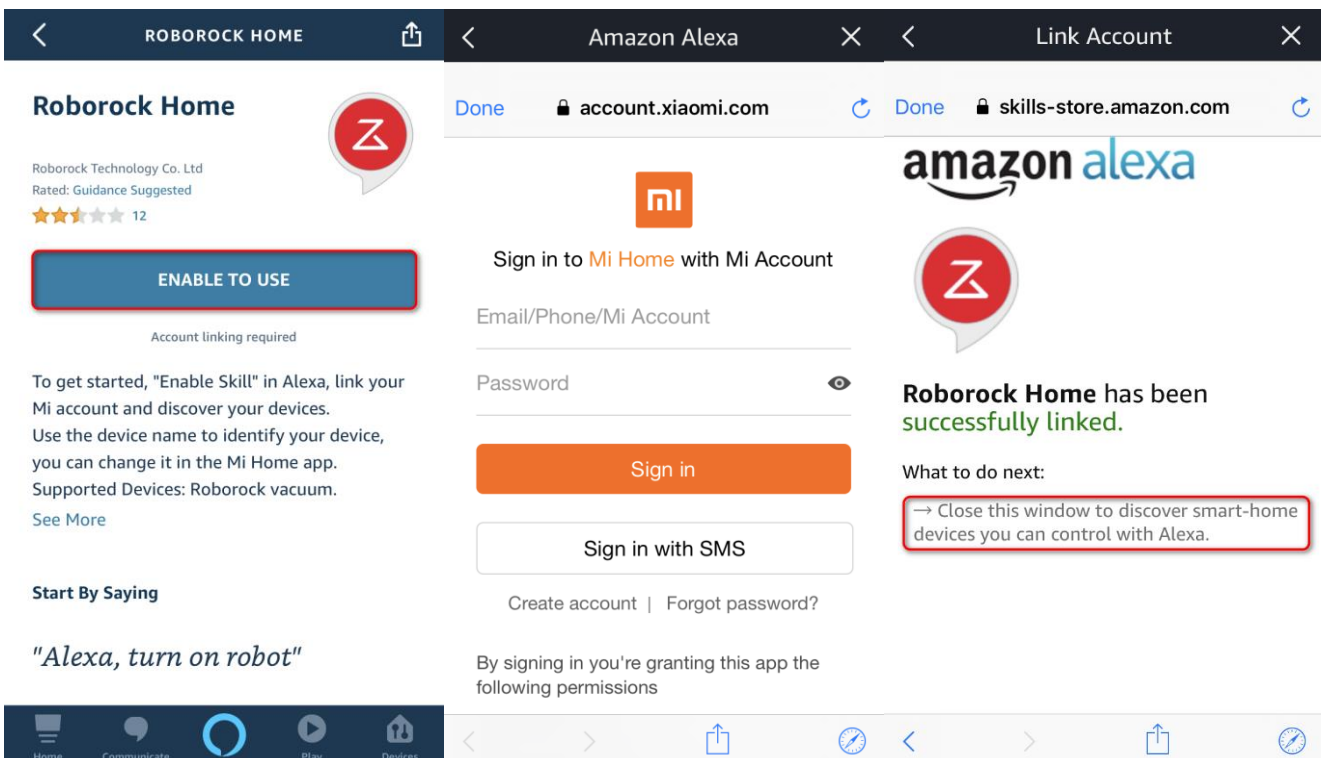


# How do use Alexa to control your Roborock?

1. Go to "Skills & Games" then search for Roborock Home



2. Link your Mi Home app to Alexa to discover devices in your Mi Home account that Alexa can control.



Discover Devices

Smart Home devices must be discovered before they can be used with Alexa.

CANCEL DISCOVER DEVICES

SETUP

Alexa is discovering devices...

8 devices discovered

This may take longer than 20 seconds

DONE

3. Create routine for your Roborock device.

DEVICES ALL DEVICES

Echo & Alexa Switches All Devices

and Tiara

ADD DEVICE

YOUR SMART HOME SKILLS

ANDY ROUTINES

Create Routine

Switch is off

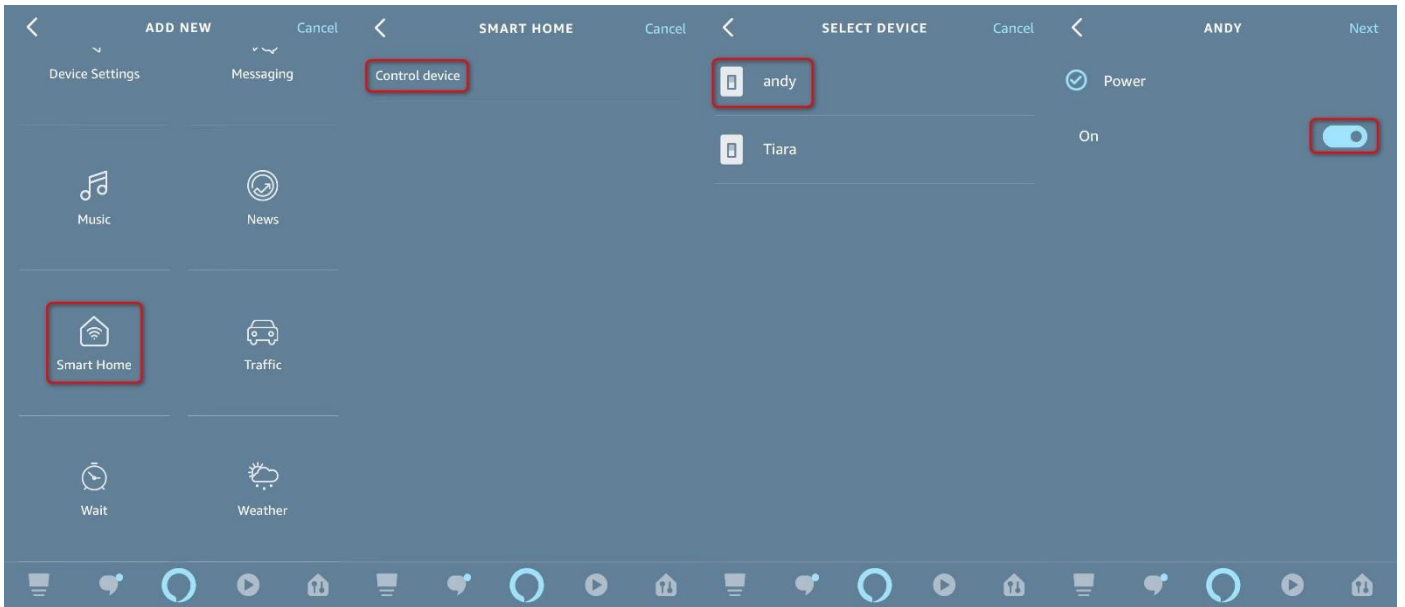
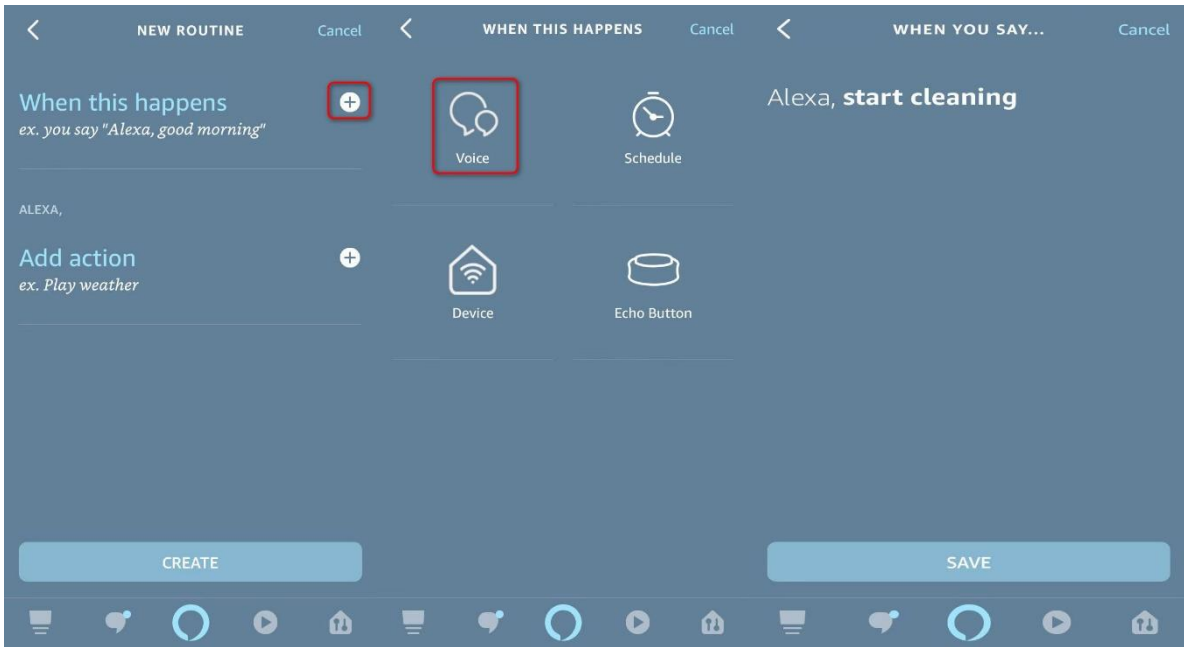
RECOMMENDED

"Alexa, Start my day"

"Alexa, Goodnight"

CREATE A ROUTINE

- 3.1 Select a device to create a routine.
  - 3.2 Create an "If" rule.
  - 3.3 Create a "Then" action.
- The same instruction is also used to stop cleaning.



4. You have created a routine. Now you can use your Alexa enabled smart speakers to start and stop cleaning.

