



# BLUPEAK

## CONTENTS

2	POWER BANKS
3	MOBILE USB CABLES & ADAPTERS
4	NETWORK CABLES
6	FIBRE CABLES
7	FIBRE SFP TRANCEIVERS
8	FIBRE DIRECT ATTACH COPPER
9	FIBRE HDMI CABLES
10	VIDEO CABLES & ADAPTERS
12	USB-C DOCKS & ADAPTERS
15	USB CABLES, POWER CABLES

DISTRIBUTED BY

**DICKER**

D A T A

### PB20LP 20,000MAH USB-C LAPTOP POWER BANK

The 20,000mAh Blupeak USB-C Laptop Power Bank provides a portable on-the-go charging solution for your Windows USB-C laptop, MacBook or ChromeBook. With USB-C Power Delivery technology delivering 45W of safe, optimised power, your USB-C laptop will stay powered up and ready for work or play.

An additional two USB-A outputs allow you to charge your USB-C laptop while simultaneously charging your iPhone, smartphone, tablet or other USB devices.

**Recharge your Mobile Phone and Laptop back to full on a single charge!**

**Provides a massive 720% extra battery for an average smartphone or an extra 130% charge for you average laptop\***



#### Portable Slim Design

The soft touch slim design easily slips into laptop cases without getting in the way or causing large bulges. The flat design helps protect your laptop while traveling.

#### 20,000mAh Capacity with USB-C

With 1 x USB-C and 2 x USB-A outputs, charge both your USB-C laptop and your phone and tablet at the same time. 63 Watt total power output keeps your laptop charging at a full 45 watts with 18 watts available to fast charge your phone.

#### Travel Easy

Get a full charge on your laptop and phone with a massive 74 Watt Hours, while staying under the maximum flight allowance of 100 Watt Hours.

FEATURES	DESCRIPTION
Capacity	20,000mAh
USB-C Input	PD 5V 3A or 14.5V 2A or 20V 1.5A
USB-C Output	PD 5V 3A or 9V 3A or 12V 3A or 14.5V 3A or 20V 2.25A
USB-A Output 1	QC 3.0 5-6V 3A or 6-9V 2A or 9-12V 1.5A
USB-A Output 2	5V 2.1A
Power Output	USB-C 45W / USB-A 1 & 2 18W
Total Power Output	63W
Watt Hour Rating	74Wh
Indicator	Four LED indicators display remaining capacity
Quick Charge	Green LED Indicator when Quick or PD Charging
Protection	Built-in over charging, over heating and short circuit protection
USB-C Cable	20cm USB-C to USB-C cable included
USB-A Cable	20cm USB-A to USB-C cable included
Dimensions	171 x 102 x 16mm
Weight	450g

**UCMA-20P & UCMC-20P MAGNETIC USB-C**

Easily connect and disconnect the Blupeak Magnetic USB-C. With the USB-C Adapter simply attach it to any existing USB-C Cable or Charger for safe and reliable charging. With three secure pin holders and magnetics the connection will stay connected and secured but still release if the cable or device is snagged or picked up.

With support for Charge up to 100W and Sync at USB 3.1 Gen 2 - 10Gbps use this adapter on any USB-C device or charger with confidence.

Suitable for any Windows USB-C Laptop, Apple USB-C MacBook and iPad Pro range.

**UCMA-20P - Blupeak USB-C Magnetic Adapter**

- USB-C 3.1 Gen 2
- 100W maximum Power
- Premium Aluminium Design
- 3 Pin Magnetic couplers
- Works with any existing USB-C Cable\*
- LED Light indicator for power/connection
- Plug n Play – no drivers to download and install

**UCMC-20P - Blupeak USB-C Magnetic Cable**

- USB-C 3.1 Gen 2
- 100W maximum Power
- Premium Aluminium Design
- 3 Pin Magnetic couplers
- 1.2m Molded cable
- LED Light indicator for power/connection
- Plug n Play – no drivers to download and install



\*Maximum power and transfer speeds dependant on USB-C cable used.

**MOBILE PHONE CABLES**

The Blupeak range of mobile phone cables are made from flexible and hard-wearing PVC material. Each connector end is housed in a solid one-piece molding with extra-long strain relief to provide maximum durability and reliability.

The Apple Lightning charge & sync cables are MFi certified by Apple to guarantee complete compatibility with all future iOS versions.

The USB-C charge & sync cables are suitable for all the latest Android and Windows smartphones and tablets that are equipped with a USB-C port.



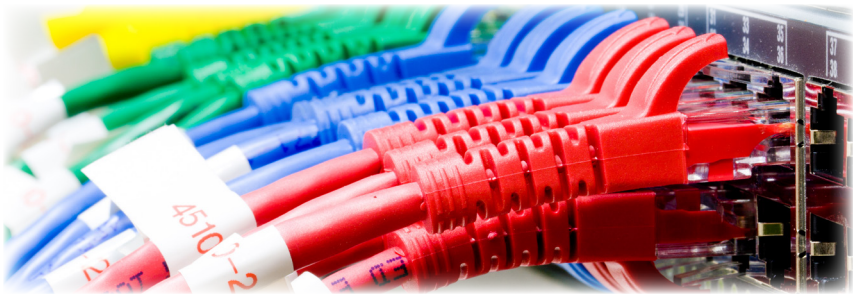
PRODUCT CODE	DESCRIPTION
LUBK12	Blupeak 1.2m Apple MFi Certified Lightning to USB Cable - Black
LUWH12	Blupeak 1.2m Apple MFi Certified Lightning to USB Cable - White
LUWH25	Blupeak 2.5m Apple MFi Certified Lightning to USB Cable - White
ACBK12	Blupeak 1.2m Apple MFi Certified USB-C to Lightning Cable - Black
ACWH12	Blupeak 1.2m Apple MFi Certified USB-C to Lightning Cable - White
UCBK12	Blupeak 1.2m USB-C to USB-A Charge & Sync Cable - Black
UCWH12	Blupeak 1.2m USB-C to USB-A Charge & Sync Cable - White
UCBK25	Blupeak 2.5m USB-C to USB-A Charge & Sync Cable - Black
UMBK12	Blupeak 1.2m Micro USB Charge & Sync Cable - Black

### CAT6 NETWORK CABLES

Our High performance CAT6 Patch leads are perfectly suited for Data Centres, Computers Rooms and Network Infrastructure. Designed for high speed network infrastructure running up to 10gbps, our CAT6 cables are built to reduce crosstalk and noise interference so performance is never compromised.

All Blupeak cables are created to the highest standard, to meet or exceed IEEE standards. Our network cables are constructed with high quality components and staggered pin construction to reduce Near End Crosstalk (NEXT). All network jackets are LSZH (Low Smoke Zero Halogen) and include a Lifetime warranty

Features	Description
Length	30cm to 25m
Colour	Black, Blue, Green, Grey, Orange, Pink, Purple, Red & White
Performance	10 Gigabit, Gigabit and 10/100Mbps Fast Ethernet
Plug	Snagless moulded boot
Connector	50 Micron gold plated, staggered pin
Cable	LSZH Jacket (Low Smoke Zero Halogen)
Conductors	24 AWG twisted pair stranded conductors
Certification	A-Tick, ETL TIA-568-C.2.1



LENGTH	BLACK	BLUE	GREEN	GREY	ORANGE	PINK	PURPLE	RED	WHITE	YELLOW
0.3CM	C6003BK	C6003BU	C6003GN	C6003GY	C6003OR	C6003PK	C6003PU	C6003RD	C6003WH	C6003YL
0.5CM	C6005BK	C6005BU	C6005GN	C6005GY	C6005OR	C6005PK	C6005PU	C6005RD	C6005WH	C6005YL
1M	C6010BK	C6010BU	C6010GN	C6010GY	C6010OR	C6010PK	C6010PU	C6010RD	C6010WH	C6010YL
1.5M	C6015BK	C6015BU	C6015GN	C6015GY	C6015OR	C6015PK	C6015PU	C6015RD	C6015WH	C6015YL
2M	C6020BK	C6020BU	C6020GN	C6020GY	C6020OR	C6020PK	C6020PU	C6020RD	C6020WH	C6020YL
3M	C6030BK	C6030BU	C6030GN	C6030GY	C6030OR	C6030PK	C6030PU	C6030RD	C6030WH	C6030YL
5M	C6050BK	C6050BU	C6050GN	C6050GY	C6050OR	C6050PK	C6050PU	C6050RD	C6050WH	C6050YL
10M	C6100BK	C6100BU	C6100GN	C6100GY	C6100OR	C6100PK	C6100PU	C6100RD	C6100WH	C6100YL
15M	N/A	C6150BU	N/A	N/A	N/A	N/A	N/A	N/A	N/A	N/A
20M	N/A	C6200BU	N/A	N/A	N/A	N/A	N/A	N/A	N/A	N/A
25M	N/A	C6250BU	N/A	N/A	N/A	N/A	N/A	N/A	N/A	N/A



**ROLL OUT READY**

### CAT6A ULTRATHIN NETWORK CABLES

Our CAT6A Ultra-thin cables are designed for high density applications in Data Centres, MDF's and patch racks. Supporting up to 10 Gigabit Ethernet and meeting CAT6A TIA/EIA and IEEE 802.3an these cables can be used in high speed, critical applications while reducing the overall footprint and weight of the deployment.

All Blupeak cables are created to the highest standard, to meet or exceed IEEE standards. Our network cables are constructed with high quality components and staggered pin construction to reduce Near End Crosstalk (NEXT). All network jackets are LSZH (Low Smoke Zero Halogen) and include a Lifetime warranty

Features	Description
Length	30cm to 5m
Colour	Black, Blue, Green, Grey, Orange, Pink, Purple, Red & White
Performance	10 Gigabit, Gigabit and 10/100Mbps Fast Ethernet
Plug	Snagless moulded boot
Connector	50 Micron gold plated, staggered pin
Cable	Outer Diameter: 3.8mm, LSZH Jacket (Low Smoke Zero Halogen)
Conductors	28 AWG twisted pair stranded conductors
Certification	A-Tick, ETL TIA-568-C.2.1, IEEE802.3an

### WHEN SHOULD I USE AN ULTRATHIN CABLE

Ultrathin cables are well suited to patching and in rack applications and will provide the same performance as a standard CAT6A cable over short cable runs, when part of a longer cable run a deration of length should be considered.

The use of Ultrathin cables is suitable for Vertical cable infrastructure however standard cables are still recommended for Horizontal cabling. Additional care should also be taken in reducing the bundle size when use in POE applications as the reduced wire guage will increase the heat generated in these applications.

LENGTH	BLACK	BLUE	GREEN	GREY	ORANGE
0.3CM	C6AT003BK	C6AT003BU	C6AT003GN	C6AT003GY	C6AT003OR
0.5CM	C6AT005BK	C6AT005BU	C6AT005GN	C6AT005GY	C6AT005OR
1M	C6AT010BK	C6AT010BU	C6AT010GN	C6AT010GY	C6AT010OR
1.5M	C6AT015BK	C6AT015BU	C6AT015GN	C6AT015GY	C6AT015OR
2M	C6AT020BK	C6AT020BU	C6AT020GN	C6AT020GY	C6AT020OR
3M	C6AT030BK	C6AT030BU	C6AT030GN	C6AT030GY	C6AT030OR
5M	C6AT050BK	C6AT050BU	C6AT050GN	C6AT050GY	C6AT050OR

LENGTH	PINK	PURPLE	RED	WHITE	YELLOW
0.3CM	C6AT003PK	C6AT003PU	C6AT003RD	C6AT003WH	C6AT003YL
0.5CM	C6AT005PK	C6AT005PU	C6AT005RD	C6AT005WH	C6AT005YL
1M	C6AT010PK	C6AT010PU	C6AT010RD	C6AT010WH	C6AT010YL
1.5M	C6AT015PK	C6AT015PU	C6AT015RD	C6AT015WH	C6AT015YL
2M	C6AT020PK	C6AT020PU	C6AT020RD	C6AT020WH	C6AT020YL
3M	C6AT030PK	C6AT030PU	C6AT030RD	C6AT030WH	C6AT030YL
5M	C6AT050PK	C6AT050PU	C6AT050RD	C6AT050WH	C6AT050YL

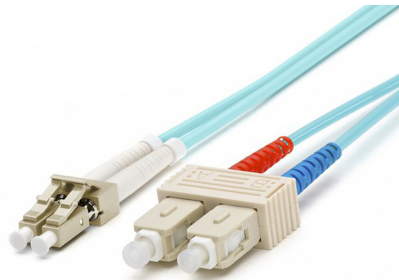


### SINGLE AND MULTIMODE FIBRE

The Blupeak Fibre cables are all manufactured and tested to the highest certification. All cables are LSZH (Low Smoke Zero Halogen Jackets) and are 100% optically tested and supplied with individual insertion loss test reports. Designed to be used in data centre and critical applications.

CODE	CONNECTOR	LENGTH	TYPE
FLCLCM101	LC-LC	1M	OM1
FLCLCM102	LC-LC	2M	OM1
FLCLCM103	LC-LC	3M	OM1
FLCLCM105	LC-LC	5M	OM1
FLCLCM110	LC-LC	10M	OM1
FLCSCM101	LC-SC	1M	OM1
FLCSCM102	LC-SC	2M	OM1
FLCSCM103	LC-SC	3M	OM1
FLCSCM105	LC-SC	5M	OM1
FLCSCM110	LC-SC	10M	OM1
FLCLCM301	LC-LC	1M	OM3
FLCLCM302	LC-LC	2M	OM3
FLCLCM303	LC-LC	3M	OM3
FLCLCM305	LC-LC	5M	OM3
FLCLCM310	LC-LC	10M	OM3
FLCSCM301	LC-SC	1M	OM3
FLCSCM302	LC-SC	2M	OM3
FLCSCM303	LC-SC	3M	OM3
FLCSCM305	LC-SC	5M	OM3
FLCSCM310	LC-SC	10M	OM3
FLCLCM401	LC-LC	1M	OM4
FLCLCM402	LC-LC	2M	OM4
FLCLCM403	LC-LC	3M	OM4
FLCLCM405	LC-LC	5M	OM4
FLCLCM410	LC-LC	10M	OM4
FLCLCM401	LC-LC	1M	OM4
FLCLCM402	LC-LC	2M	OM4
FLCLCM403	LC-LC	3M	OM4
FLCLCM405	LC-LC	5M	OM4
FLCLCM410	LC-LC	10M	OM4
FLCSCM401	LC-SC	1M	OM4
FLCSCM402	LC-SC	2M	OM4
FLCSCM403	LC-SC	3M	OM4
FLCSCM405	LC-SC	5M	OM4
FLCSCM410	LC-SC	10M	OM4
FLCSCS201	LC-SC	1M	OS2
FLCSCS202	LC-SC	2M	OS2
FLCSCS203	LC-SC	3M	OS2
FLCSCS205	LC-SC	5M	OS2
FLCSCS210	LC-SC	10M	OS2
FLCLCS201	LC-LC	1M	OS2
FLCLCS202	LC-LC	2M	OS2
FLCLCS203	LC-LC	3M	OS2
FLCLCS205	LC-LC	5M	OS2
FLCLCS210	LC-LC	10M	OS2

FEATURES	OM3 FIBRE	OM4 FIBRE	OS2 FIBRE
1Gb Ethernet	550m	1000m	100km
10Gb Ethernet	300m	550m	40km
40GB-100GB Ethernet	100m	150m	40km
Bandwidth	2000/500 MHz-km	>100GHz-km	>100GHz-km
Typical Insertion Loss	<0.2dB	<0.2dB	<0.2dB
Typical Return Loss	>35dB	>35dB	>50dB
Jacket OD	1.8mm	1.8mm	1.8mm
Warranty	Lifetime	Lifetime	Lifetime



**ROLL OUT READY**

### SFP & TRANCIEVERS

The Blupeak range of Third Party compatible SFP Transceiver modules come factory loaded with the specific configuration data required for your exact piece of equipment. Whether its for a Cisco, HP or any of the networking vendors in the market our SFP will work seamlessly in your network.

We carry a range of pre-programmed Cisco and HP SFP Transceivers for hassle free installation and operation, or select from our Third Party range and have it custom programmed to your specific network appliance.



### CISCO COMPATIBLE SFP

CODE	DESCRIPTION
BP-GE-T	Blupeak SFP GE-T RJ45 10/100/1000 100M - Cisco Compatible
BP-GLC-T	Blupeak SFP GLC-TE RJ45 1000 100M - Cisco Compatible
BP-GLC-SX-MM	Blupeak SFP GLC-SX-MM 100BASE-SX 550M 850nm - Cisco Compatible
BP-GLC-LH-SM	Blupeak SFP GLC-LH-SM LC 1G Singlemode 10KM 1310nm - Cisco Compatible
BP-GLC-EX-SM	Blupeak SFP GLC-EX-SM LC 1G Singlemode 40KM 1310nm - Cisco Compatible
BP-GLC-ZX-SM	Blupeak SFP GLC-ZX-SM LC 1G Singlemode 80KM 1550nm - Cisco Compatible
BP-SFP-10G-SR	Blupeak SFP+ SFP-10G-SR 300M 850nm - Cisco Compatible
BP-SFP-10G-LR	Blupeak SFP+ LC 10G Singlemode 10KM 1310nm - Cisco Compatible
BP-SFP-10G-ER	Blupeak SFP+ LC 10G Singlemode 40KM 1550nm - Cisco Compatible
BP-SFP-10G-ZR	Blupeak SFP+ LC 10G Singlemode 80KM 1550nm - Cisco Compatible
BP-QSFP-40G-LR4	Blupeak QSFP+ LC 40G Singlemode 10KM 1310nm - Cisco Compatible

### THIRD PARTY COMPATIBLE SFP

CODE	DESCRIPTION
SFPC111	Blupeak SFP RJ45 10/100/1000 100M - (Third Party Compatible)
SFPC1000	Blupeak SFP RJ45 1000 100M - (Third Party Compatible)
SFPLC1GMM	Blupeak SFP 100BASE-SX 550M 850nm - (Third Party Compatible)
SFPLC1GSM	Blupeak SFP LC 1G Singlemode 10KM 1310nm - (Third Party Compatible)
SFPLC1GSM4	Blupeak SFP LC 1G Singlemode 40KM 1310nm - (Third Party Compatible)
SFPLC1GSM8	Blupeak SFP LC 1G Singlemode 80KM 1550nm - (Third Party Compatible)
SFP+LC10GMM	Blupeak SFP+ SFP-10G-SR 300M 850nm - (Third Party Compatible)
SFP+LC10GSM	Blupeak SFP+ LC 10G Singlemode 10KM 1310nm - (Third Party Compatible)

### HP/ARUBA COMPATIBLE SFP

CODE	DESCRIPTION
SFPC1110-HA	Blupeak SFP RJ45 10/100/1000 100M (HP/Aruba Compatible)
SFPC1000-HA	Blupeak SFP RJ45 1000 100M (HP/Aruba Compatible)
SFPLC1GMM-HA	Blupeak SFP LC 1G Multimode 550M 850nm (HP/Aruba Compatible)
SFPLC1GSM-HA	Blupeak SFP LC 1G Singlemode 10KM 1310nm (HP/Aruba Compatible)
SFPLC1GSM4-HA	Blupeak SFP LC 1G Singlemode 40KM 1310nm (HP/Aruba Compatible)
SFPLC1GSM8-HA	Blupeak SFP LC 1G Singlemode 80KM 1550nm (HP/Aruba Compatible)
SFP+LC10GMM-HA	Blupeak SFP+ LC 10G Multimode 300M 850nm (HP/Aruba Compatible)
SFP+LC10GSM-HA	Blupeak SFP+ LC 10G Singlemode 10KM 1310nm (HP/Aruba Compatible)

### DAC

The Blupeak range of Passive Direct Attach Copper Cables are high speed copper Twinax cables ideal for short distance appliance to appliance cabling. Our modules come factory loaded with the specific configuration data required for your exact piece of equipment. Whether its for a Cisco, HP or any of the networking vendors in the market our DAC Cables will work seamlessly in your network.

We carry a range of pre-programmed Cisco and HP DAC Cables for hassle free installation and operation, or select from our Third Party range and have it custom programmed to your specific network appliance.



### CISCO COMPATIBLE DAC

CODE	DESCRIPTION
BP-H10GB-CU50CM	Blupeak 50cm DAC SFP+ 10G Passive Cable - (Cisco Compatible)
BP-H10GB-CU1M	Blupeak 1m DAC SFP+ 10G Passive Cable - (Cisco Compatible)
BP-H10GB-CU2M	Blupeak 2m DAC SFP+ 10G Passive Cable - (Cisco Compatible)
BP-H10GB-CU3M	Blupeak 3m DAC SFP+ 10G Passive Cable - (Cisco Compatible)
BP-H10GB-CU5M	Blupeak 5m DAC SFP+ 10G Passive Cable - (Cisco Compatible)
BP-H40GB-CU50CM	Blupeak 50cm DAC QSFP+ 40G Passive Cable - (Cisco Compatible)
BP-H40GB-CU1M	Blupeak 1m DAC QSFP+ 40G Passive Cable - (Cisco Compatible)
BP-H40GB-CU2M	Blupeak 2m DAC QSFP+ 40G Passive Cable - (Cisco Compatible)
BP-H40GB-CU3M	Blupeak 3m DAC QSFP+ 40G Passive Cable - (Cisco Compatible)
BP-H40GB-CU5M	Blupeak 5m DAC QSFP+ 40G Passive Cable - (Cisco Compatible)

### THIRD PARTY COMPATIBLE DAC

CODE	DESCRIPTION
DACSF005	Blupeak 50cm DAC SFP+ 10G Passive Cable - (Third Party Compatible)
DACSF010	Blupeak 1m DAC SFP+ 10G Passive Cable - (Third Party Compatible)
DACSF020	Blupeak 2m DAC SFP+ 10G Passive Cable - (Third Party Compatible)
DACSF030	Blupeak 3m DAC SFP+ 10G Passive Cable - (Third Party Compatible)
DACSF050	Blupeak 5m DAC SFP+ 10G Passive Cable - (Third Party Compatible)
DACQSF005	Blupeak 50cm DAC QSFP+ 40G Passive Cable - (Third Party Compatible)
DACQSF010	Blupeak 1m DAC QSFP+ 40G Passive Cable - (Third Party Compatible)
DACQSF020	Blupeak 2m DAC QSFP+ 40G Passive Cable - (Third Party Compatible)
DACQSF030	Blupeak 3m DAC QSFP+ 40G Passive Cable - (Third Party Compatible)
DACQSF050	Blupeak 5m DAC QSFP+ 40G Passive Cable - (Third Party Compatible)

### HP/ARUBA COMPATIBLE DAC

CODE	DESCRIPTION
DACSF005-HA	Blupeak 50cm DAC SFP+ 10G Passive Cable (HP/Aruba Compatible)
DACSF010-HA	Blupeak 1m DAC SFP+ 10G Passive Cable (HP/Aruba Compatible)
DACSF020-HA	Blupeak 2m DAC SFP+ 10G Passive Cable (HP/Aruba Compatible)
DACSF030-HA	Blupeak 3m DAC SFP+ 10G Passive Cable (HP/Aruba Compatible)
DACSF050-HA	Blupeak 5m DAC SFP+ 10G Passive Cable (HP/Aruba Compatible)
DACQSF005-HA	Blupeak 50cm DAC QSFP+ 40G Passive Cable (HP/Aruba Compatible)
DACQSF010-HA	Blupeak 1m DAC QSFP+ 40G Passive Cable (HP/Aruba Compatible)
DACQSF020-HA	Blupeak 2m DAC QSFP+ 40G Passive Cable (HP/Aruba Compatible)
DACQSF030-HA	Blupeak 3m DAC QSFP+ 40G Passive Cable (HP/Aruba Compatible)
DACQSF050-HA	Blupeak 5m DAC QSFP+ 40G Passive Cable (HP/Aruba Compatible)



### HDMI FIBRE OPTICAL CABLE

The Blupeak HDMI Fibre Optical Cable overcomes the length requirements of HDMI allowing you to transmit HDMI up to 100m without any degradation of signal. Utilizing sophisticated HDMI-to-Fibre converters built inside the HDMI plugs we can convert the signal to fibre optic light, this greatly increases to length but also allows for an ultra-thin cable design and reduces interference from EMI and RFI interference.

#### Long range HDMI with zero signal loss!



#### No Extra Setup

Using an Active Over Fibre (AOC) hybrid cable means that the source and destination need no extra setup when using this cable. This includes passing the full HDMI signal for EDID (self-detection) and HDCP copy protection.

#### Longer Lengths

Standard HDMI cables beyond 10M must utilise active signal boosters and extra shielding. With Fibre Optic lengths can extend well beyond what's possible with copper cable while reducing the thickness and weight of

#### No Signal Loss

With standard copper cables the longer the run, the more likely that EMI and RFI interference will cause signal issues. Care must be taken to avoid cabling near Power and other sources of EMI/RFI. Fibre Optic cables on the other hand are immune to EMI and RFI interference and no loss of signal

FEATURES	DESCRIPTION
Lengths	10m, 15m, 20m, 30m, 50m
Resolution	UltraHD 4K (4096x2160) @ 60Hz 4:4:4
Bandwidth	18Gbps
Specification	HDMI 2.0b, HDCP 2.2 & HDCP 1.4
Audio	Lossless HDMI; Dolby True HD, DTS-HD
Colour	48bit (16 bit per channel)
Bend Radius	48mm

Code	Length
HDPVOF10	10m
HDPVOF15	15m
HDPVOF20	20m
HDPVOF30	30m
HDPVOF50	50m

### HDMI WITH ETHERNET CABLE - ACTIVE REPEATER

Our High Speed HDMI cables with Ethernet include an Active Repeater to exceed distances of 10 metres without the loss of signal normally associated with long HDMI cables.

With lengths of up to 40M these cables are well suited to Office, Theatre and Display room cabling runs through wall or roof cavities.



FEATURES	DESCRIPTION
Lengths	15m, 20m, 25m, 30m, 40m
Resolution	UltraHD 4K (3840x2160) @ 30Hz 4:4:4
Design	24k Gold Connector w/24AWG Copper Wire
Specification	HDMI 1.4, HDCP 1.4
Bandwidth	10.2 Gbit/s
Power	No External Power Required

Code	Length
HDPVA15	15m
HDPVA20	20m
HDPVA25	25m
HDPVA30	30m
HDPVA40	40m

### DISPLAYPORT CABLES & ADAPTERS

Our range of DisplayPort adapters and cables let you connect your Desktop PC, Ultrabook or any other device with a DisplayPort connector to a variety of different displays. Whether it's a projector, external monitor or HDTV, our fully digital adapters make sure that you receive perfect output with no loss of signal or fidelity.



CODE	INPUT	OUTPUT	LENGTH	RESOLUTION
DPHDAD	DisplayPort Male	HDMI Female	20cm	1920 x 1200
DPHDAD4K	DisplayPort Male	HDMI 4K2K Female	20cm	3840 x 2160
DPDVAD	DisplayPort Male	DVI Female	20cm	1920 x 1200
DPVGAD	DisplayPort Male	VGA Female	20cm	1920 x 1200
DPDV01	DisplayPort Male	DVI Male	1m	1920 x 1200
DPDV02	DisplayPort Male	DVI Male	2m	1920 x 1200
DPDV03	DisplayPort Male	DVI Male	3m	1920 x 1200
DPDV05	DisplayPort Male	DVI Male	5m	1920 x 1200
DPHD01	DisplayPort Male	HDMI Male	1m	1920 x 1200
DPHD02	DisplayPort Male	HDMI Male	2m	1920 x 1200
DPHD03	DisplayPort Male	HDMI Male	3m	1920 x 1200
DPHD05	DisplayPort Male	HDMI Male	5m	1920 x 1200
DPDP01	DisplayPort Male	DisplayPort Male	1m	3840 x 2160
DPDP02	DisplayPort Male	DisplayPort Male	2m	3840 x 2160
DPDP03	DisplayPort Male	DisplayPort Male	3m	3840 x 2160
DPDP05	DisplayPort Male	DisplayPort Male	5m	3840 x 2160

### MINI-DISPLAYPORT CABLES & ADAPTERS

Our range of Mini DisplayPort adapters let you connect your Mac, MacBook, Ultrabook, Surface or any other device with a mini DisplayPort connector to a variety of different displays. Whether it's a projector, external monitor or HDTV, our fully digital adapters make sure that you receive perfect output with no loss of signal or fidelity.



CODE	INPUT	OUTPUT	LENGTH	RESOLUTION
MDDHAD	Mini DisplayPort Male	HDMI Female	20cm	1920 x 1200
MDHAD4K	Mini DisplayPort Male	HDMI 4K2K Female	20cm	3840 x 2160
MDDVAD	Mini DisplayPort Male	DVI Female	20cm	1920 x 1200
MDDPAD	Mini DisplayPort Male	DisplayPort Female	20cm	3840 x 2160
MDVGAD	Mini DisplayPort Male	VGA Female	20cm	1920 x 1080
MDHDDAD	Mini DisplayPort Male	HDMI, DVI & DisplayPort Female	20cm	1920 x 1080 (HDMI) 1920 x 1200 (DVI) 2560 x 1600 (DisplayPort)
MDVDHAD	Mini DisplayPort Male	HDMI, DVI & VGA Female	20cm	1920 x 1080 (VGA) 1920 x 1080 (HDMI) 1920 x 1200 (DVI)
MDHD02	Mini DisplayPort Male	HDMI Male	2m	1920 x 1200
MDDP02	Mini DisplayPort Male	DisplayPort Male	2m	3840 x 2160
MDDV02	Mini DisplayPort Male	DVI Male	2m	1920 x 1200
MDHDV-GAD	Mini DisplayPort Male	VGA, HDMI Female	20cm	1920x1080 (VGA) 3840x2160 (HDMI)



**ROLL OUT READY**

### HDMI CABLES & ADAPTERS

The Blupeak High Speed HDMI Cable with Ethernet can be used to connect Monitors, Blu-Ray, DVD, Media Centres, gaming consoles to a TV, Monitor or Projector.

A HDMI 2.0 Cable can support up to 4k Ultra HD at 60Hz letting you watch Ultra HD Blu-ray or game on the latest 4K Xbox One S or Xbox One X and PlayStation 4.

CODE	INPUT	OUTPUT	LENGTH	RESOLUTION
HDBGAD	HDMI Male	VGA Female w/audio	20cm	1920 x 1200
HDDVAD	HDMI Male	DVI Female	20cm	3840 x 2160
DVHDAD	DVI Male	HDMI Female	20cm	1920 x 1200
HDPV005	HDMI Male	HDMI Male w/Ethernet	50cm	3840 x 2160
HDPV010	HDMI Male	HDMI Male w/Ethernet	1m	3840 x 2160
HDPV020	HDMI Male	HDMI Male w/Ethernet	2m	3840 x 2160
HDPV030	HDMI Male	HDMI Male w/Ethernet	3m	3840 x 2160
HDPV050	HDMI Male	HDMI Male w/Ethernet	5m	3840 x 2160
HDDV01	HDMI Male	DVI Male	1m	1920 x 1200
HDDV02	HDMI Male	DVI Male	2m	1920 x 1200
HDDV03	HDMI Male	DVI Male	3m	1920 x 1200
HDDV05	HDMI Male	DVI Male	5m	1920 x 1200



### DVI CABLES

The Blupeak DVI Dual Link Cable with Ethernet can be used to connect Monitors, Projectors and HDTV's.

This pure digital cable provides pixel perfect video reproduction and is HDCP compliant (High-band Digital Content Protection).

CODE	INPUT	OUTPUT	LENGTH	RESOLUTION
DVMM01	DVI Male	DVI Male	1m	1920 x 1200
DVMM02	DVI Male	DVI Male	2m	1920 x 1200
DVMM03	DVI Male	DVI Male	3m	1920 x 1200
DVMM05	DVI Male	DVI Male	5m	1920 x 1200
DVMM10	DVI Male	DVI Male	10m	1920 x 1200



### VGA CABLES

The Blupeak range of VGA cables allow you to connect your legacy VGA computers and monitors. With triple shielding and ferrite cores for added signal protection, you can be sure these VGA cables will provide crisp, clear images.

CODE	INPUT	OUTPUT	LENGTH	RESOLUTION
VGMF02	VGA Male	VGA Female	2m	1920 x 1200
VGMF03	VGA Male	VGA Female	3m	1920 x 1200
VGMF05	VGA Male	VGA Female	5m	1920 x 1200
VGMF10	VGA Male	VGA Female	10m	1920 x 1200
VGMM02	VGA Male	VGA Male	2m	1920 x 1200
VGMM03	VGA Male	VGA Male	3m	1920 x 1200
VGMM05	VGA Male	VGA Male	5m	1920 x 1200
VGMM10	VGA Male	VGA Male	10m	1920 x 1200
VGMAA02	VGA Male	VGA Male w/Audio	2m	1920 x 1200
VGMAA03	VGA Male	VGA Male w/Audio	3m	1920 x 1200
VGMAA05	VGA Male	VGA Male w/Audio	5m	1920 x 1200
VGMAA10	VGA Male	VGA Male w/Audio	10m	1920 x 1200



### UCMP01

The Blupeak USB-C to Multi-Port Adapter lets you expand your available ports by adding 4K HDMI, 2 x USB 3.0, RJ45 Gigabit Network, SD Card Reader and USB-C PD (Power Delivery).

With today's modern MacBooks, Ultrabooks, Chromebooks and tablets coming with as little as only one USB-C port, this Blupeak USB-C Multiport Adapter is a must for the tech warrior on the go.

- 1 x USB-C male input connector
- 1 x HDMI female connector
- 2 x USB 3.0 female connectors
- 1 x RJ45 female Gigabit LAN connector
- 1 x SD Card Reader Slot
- 1 x USB-C female connector for PD (Power Delivery)
- HDMI video output supports Extend or Mirror mode
- Supports Ultra HD 4K Video 3840 x 2160 @30Hz
- Supports RJ45 10/100/1000 Gigabit Ethernet Connection
- USB 3.0 ports support data transfer speeds up to 5Gbps
- Stylish aluminium design for durability
- Plug n Play – no drivers to download and install
- Host powered – no external power required
- Works with Macs, Windows, Chromebook and Android devices



### UCMP02

The Blupeak USB-C to Multi-Port Adapter lets you expand your available ports by adding 4K HDMI, 2 x USB 3.0 and USB-C PD (Power Delivery).

With today's modern MacBooks, Ultrabooks, Chromebooks and tablets coming with as little as only one USB-C port, this Blupeak USB-C Multiport Adapter is a must for the tech warrior on the go.

- 1 x USB-C male input connector
- 1 x HDMI female connector
- 2 x USB 3.0 female connectors
- 1 x USB-C female connector for PD (Power Delivery)
- HDMI video output supports Extend or Mirror mode
- Supports Ultra HD 4K Video 3840 x 2160 @30Hz
- USB 3.0 ports support data transfer speeds up to 5Gbps
- Stylish aluminium design for durability
- Plug n Play – no drivers to download and install
- Host powered – no external power required
- Works with Macs, Windows, Chromebook and Android devices

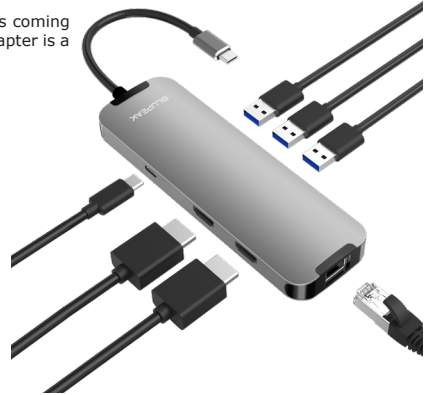


**UCMP04**

The Blupeak USB-C to Multi-Port Adapter lets you expand your available ports by adding Dual HDMI, 2 x USB 3.0, RJ45 Gigabit Network and USB-C PD (Power Delivery).

With today’s modern MacBooks, Ultrabooks, Chromebooks and tablets coming with as little as only one USB-C port, this Blupeak USB-C Multiport Adapter is a must for the tech warrior on the go

- 1 x USB-C male input connector
- 2 x HDMI female connector
- 2 x USB 3.0 female connectors
- 1 x RJ45 female Gigabit LAN connector
- 1 x USB-C female connector for PD (Power Delivery)
- HDMI video output supports Extend or Mirror mode
- HDMI supports Ultra HD 4K Video 3840 x 2160 @30Hz
- Supports RJ45 10/100/1000 Gigabit Ethernet Connection
- USB 3.0 ports support data transfer speeds up to 5Gbps
- USB-C PD supports 100W charging
- Stylish aluminium design for durability
- Plug n Play – no drivers to download and install
- Host powered – no external power required
- Works with Macs, Windows, Chromebook and Android devices



**USB-C DISPLAY ADAPTERS**

Our range of USB Type-C display adapters let you connect your MacBook, Ultrabook, Chromebook or Android device to a variety of different displays. Whether it’s a projector, external monitor or HDTV, our fully digital adapters make sure that you receive perfect output with no loss of signal or fidelity

- Ideal for MacBook, MacBook Pro, Ultrabook, Chromebook and Android devices
- Supports mirror or extend mode
- Supports 4K Ultra HD 3840 x 2160
- USB-C port is reversible for convenience
- Plug n Play – no drivers to download and install
- Host powered – no external power required
- Supports Mac, Windows, Chrome OS and Android



CODE	INPUT	OUTPUT	LENGTH	RESOLUTION
UCHD4K	USB-C Male	HDMI Female	20cm	3840 x 2160 @60Hz
UC2HD4K	USB-C Male	Dual HDMI Female	20cm	3840 x 2160 @30Hz
UCDP4K	USB-C Male	DisplayPort Female	20cm	3840 x 2160 @60Hz
UCMD4K	USB-C Male	Mini-DisplayPort Female	20cm	3840 x 2160 @60Hz



### UCU4H USB-C 4 PORT USB 3.0 HUB

This USB Type-C 4 port hub allows you to add 4 extra USB 3.0 ports to your MacBook, Ultrabook, or Chromebook. Perfect for connecting all your legacy devices such as external hard disk drives, USB flash drives, printers, scanners, keyboard and mice.

- 1 x USB-C male input connector
- 4 x USB 3.0 female connectors
- Ideal for external HDDs, USB drives, printers, keyboard, mice and more
- Supports data transfer speeds up to 5Gbps
- LED for connectivity status
- Stylish aluminium design for durability
- Plug n Play – no drivers to download and install
- Host powered – no external power required
- Supports Mac, Windows, Chrome OS



### UCGBL - USB-C TO GIGABIT ETHERNET ADAPTER

This USB Type-C Ethernet Adapter will get your MacBook, Ultrabook, Chromebook or Tablet connected back on the network with full Gigabit speeds.

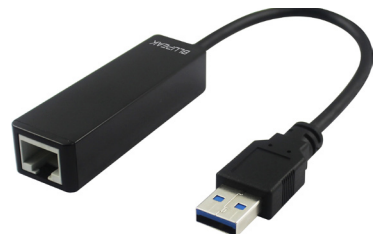
- 1 x USB-C male input connector
- 1 x RJ45 female Gigabit connector
- Supports 10/100/1000Mbps data transfer speeds
- Stylish aluminium design for durability
- Plug n Play – no drivers to download and install
- Host powered – no external power required
- Supports Mac, Windows, Chrome OS



### U3GBL – Blupeak USB 3.0 to Gigabit Ethernet Adapter

This USB Type-C Ethernet Adapter will get your MacBook, Ultrabook, Chromebook or Tablet connected back on the network with full Gigabit speeds.

- 1 x USB 3.0 Type A male input connector
- 1 x RJ45 female Gigabit connector
- Supports 10/100/1000Mbps data transfer speeds
- Supports IEEE 802.3az (Energy Efficient Ethernet)
- Supports IEEE 802.3, 802.3u and 802.3ab
- Supports all USB 3.0 power saving modes (U0, U1, U2 and U3)
- Backwards compatible with USB 2.0
- Realtek Chipset RTL8153
- Mac OS X 10.5 & Windows 8 or higher require no drivers to download or install
- Host powered – no external power required
- Supports Mac, Windows, Chrome OS



**USB CABLES**

Connect your Android smartphone or tablet to a USB charger or Laptop/Computer with our range of USB Cables for Charge and Sync.

CODE	DESCRIPTION
U2AB02	Blupeak 2m USB 2.0 Cable USB-A Male to USB-B Male
U2AB03	Blupeak 3m USB 2.0 Cable USB-A Male to USB-B Male
U2AB05	Blupeak 5m USB 2.0 Cable USB-A Male to USB-B Male
U2AA02	Blupeak 2m USB 2.0 Cable USB-A Male to USB-A Female
U2AA03	Blupeak 3m USB 2.0 Cable USB-A Male to USB-A Female
U2AA05	Blupeak 5m USB 2.0 Cable USB-A Male to USB-A Female
U2AM01	Blupeak 1m USB 2.0 Cable USB-A Male to Mini USB Male
U2AM02	Blupeak 2m USB 2.0 Cable USB-A Male to Mini USB Male
UCAC01	Blupeak 1m USB 2.0 Cable USB-A Male to Micro USB Male
U2AC02	Blupeak 2m USB 2.0 Cable USB-A Male to Micro USB Male
U3AB01	Blupeak 1m USB 3.0 SuperSpeed Cable USB-A Male to USB-B Male
U3AB02	Blupeak 2m USB 3.0 SuperSpeed Cable USB-A Male to USB-B Male
U3AB03	Blupeak 3m USB 3.0 SuperSpeed Cable USB-A Male to USB-B Male
U3AM01	Blupeak 1m USB 3.0 SuperSpeed Cable USB-A Male to Micro USB Male
U3AM02	Blupeak 2m USB 3.0 SuperSpeed Cable USB-A Male to Micro USB Male
U3AM03	Blupeak 3m USB 3.0 SuperSpeed Cable USB-A Male to Micro USB Male
U3AA01	Blupeak 1m USB 3.0 SuperSpeed Cable USB-A Male to USB-A Female
U3AA02	Blupeak 2m USB 3.0 SuperSpeed Cable USB-A Male to USB-A Female
U3AA03	Blupeak 3m USB 3.0 SuperSpeed Cable USB-A Male to USB-A Female



**POWER CABLES**

Our range of Power cable allows you to connect any computer or server equipment to power, whether you need GPO 3 Pin Australian connections or IEC 13/14 , 19/20 connections. We also carry a range of high temperature cables to suite dense rack and data centre environments with increased hot isle environments.

CODE	DESCRIPTION
PC143P25	Blupeak 25cm Power Cable C14 male to 3Pin AU Female
PC3P1301	Blupeak 1m Power Cable 3Pin AU Male to C13 Female
PC3P1302	Blupeak 2m Power Cable 3Pin AU Male to C13 Female
PC3P1303	Blupeak 3m Power Cable 3Pin AU Male to C13 Female
PC3P1305	Blupeak 5m Power Cable 3Pin AU Male to C13 Female
PC131401	Blupeak 1m Power Cable C13 Female to C14 Male
PC131402	Blupeak 2m Power Cable C13 Female to C14 Male
PC131403	Blupeak 3m Power Cable C13 Female to C14 Male
PC131405	Blupeak 5m Power Cable C13 Female to C14 Male
PC141501	Blupeak 1m High Temp Power Cable C14 Male to C15 Female
PC141502	Blupeak 2m High Temp Power Cable C14 Male to C15 Female
PC3P1501	Blupeak 1m High Temp Power Cable 3Pin AU Male to C15 Female
PC3P1502	Blupeak 2m High Temp Power Cable 3Pin AU Male to C15 Female
PC3PC502	Blupeak 2m Power Cable 3Pin AU Male to C5 Female
PC2PC702	Blupeak 2m Power Cable 2Pin AU Male to C7 Female
PC192001	Blupeak 1m 15A Power Cable C19 Female to C20 Male
PC192002	Blupeak 2m 15A Power Cable C19 Female to C20 Male



# BLUPEAK

Level 7, 91 Phillip Street Parramatta NSW 2150  
Call us: 02 9891 0099  
Email us: [sales@blupeak.com.au](mailto:sales@blupeak.com.au)

# DICKER

---

D A T A

**General Enquiries:**

1800 688 586

Hardware Sales:

(02) 8556 8055

[sales@dickerdata.com.au](mailto:sales@dickerdata.com.au)