



TENT MAKERS & TRADERS

ESTABLISHED 1961

# CLASSIC JACK 100

A premium take on the 10' x 10' Springbar® Tent footprint featuring 100% cotton duck canvas throughout in a creamy natural color, the Classic Jack is equal parts rugged performance and timeless style. Additional details include stretch interior pockets, brass cord locks, and 10oz cotton duck canvas carry bags.

S  
P  
E  
C  
S

### SIZE

10' x 10' x 6.5'

### WEIGHT

80 lbs.

### PACKED DIMENSIONS

48" x 12" x 12"

### MATERIAL

100% Cotton Duck Canvas (8.5oz walls & 10oz roof). Treated for water resistance and anti-mold.

Laminated Vinyl Floor. Heavy-duty and fully waterproof. No-See-Um Mesh window and door interiors.

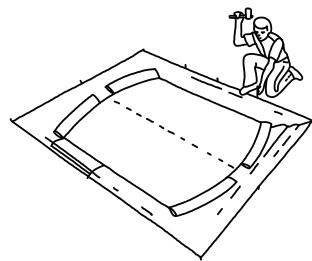
### HARDWARE

Galvanized steel 10' x 10' Springbar® pole set  
Plated steel 12" nail stakes

## SPRINGBAR TENT SET-UP GUIDE

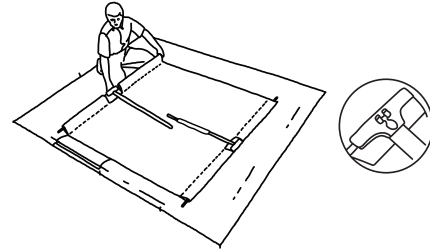
### 1. Stake it Down.

Select and level site and keep the tent as 'square' as possible. Springbar Tents **MUST BE SECURELY STAKED DOWN** to function.



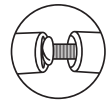
### 2. Insert Ridge Poles and Spring Bars.

Use 2 ridge poles, 1 steel sleeve, and 4 spring bars.

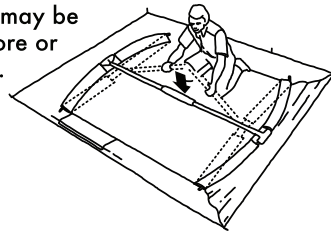


### 3. Tension the Roof Panel.

Place the ridge poles end to end and press down to tension the roof. Slide the steel sleeve over the connection point to secure the ridge.

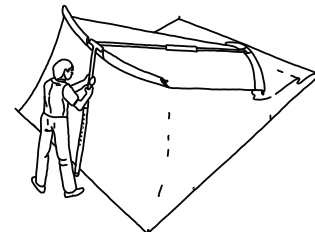


Tip: The tension screw may be adjusted to achieve more or less tension as needed.



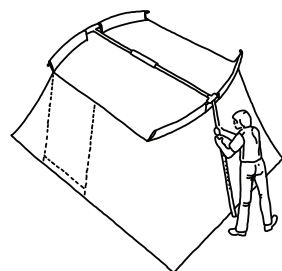
### 4. Install One Upright Pole.

Tip: Assemble the upright pole on the shortest setting. After installing, lengthen the pole until the walls are taut—but not too tight.

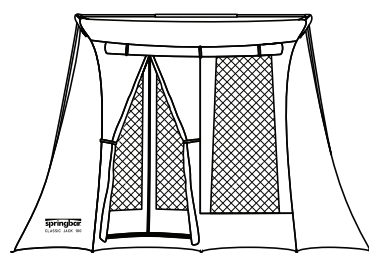


### 5. Install Second Upright Pole.

Tip: Follow the same procedure outlined in Step 4.

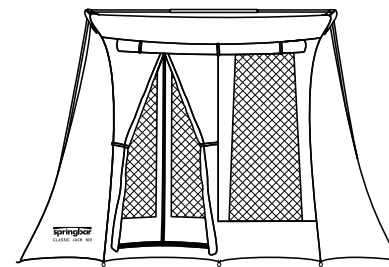


### 6. Enjoy your Classic Jack 100.

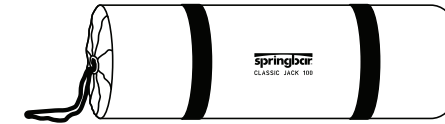


## CLASSIC JACK 100 INCLUDES

Classic Jack 100 x 1



Carry Bag x 1



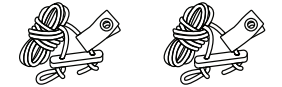
Plated steel 12" nail stakes x 18



Pole Bag x 1



Tension Rope with Tie Guy x 2



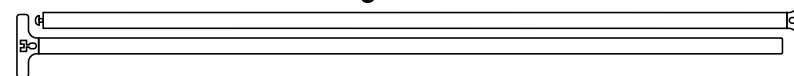
Upright Poles x 2



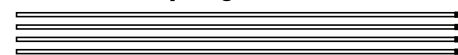
Awning Poles x 2



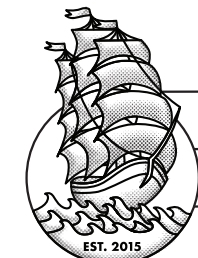
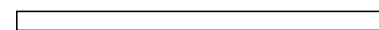
Ridge Pole x 2



Spring Bar x 4



Steel Sleeve Pole x 1



**DURABLE IMPORTS**  
BUILT TO WEATHER ANY WEATHER  
EST. 2015

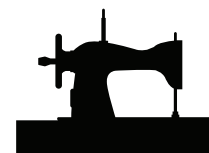
Designed in SLC, Utah. Made in China



### MAINTENANCE TIPS

**STORE IT DRY, STORE IT CLEAN!**  
That goes for the poles too.

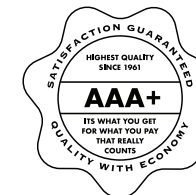
With proper care, a Springbar® Tent is built to last a lifetime.



### REPAIRS

We work hard to keep tents in the great outdoors and out of landfills. Our Salt Lake City Sew Shop can repair or replace just about anything. It's how we do sustainability.

Contact us to schedule a repair.



### SATISFACTION GUARANTEE

Love your tent or we'll make it right. We've got you covered.



### SERVICE & SUPPORT

Springbar® representatives are standing by to assist you.



By Email: [service@springbar.com](mailto:service@springbar.com)  
By Phone: (801) 486-4161  
By Post: 4026 S West Temple, Millcreek, Utah, 84107

**BE A HAPPY CAMPER**

“DISCOVER A NEW PLEASURE IN CAMPING”



Jack Kirkham Sr. circa 1962  
Inventor of the Springbar® Tent