

# INF Input Regulator Assemblies

INF Input Regulators are designed for use with single element heaters.

- Low cost control option for single element heaters up to 3000 watts (maximum 15 amps).
- Not a dimmer – INF gently cycles the heater on/off at regular intervals when not on full power.
- Each heater must have its own INF Input Regulator.
- Regulator Part Numbers listed below are for 240V (also available for 120V).

## IN-WALL FOR INDOOR OR PROTECTED OUTDOOR AREAS



14-4200 Single SS Wall Plate w/Deep Gang Box



14-4205 Dual SS Wall Plate w/Deep Gang Box

## IN-WALL FOR EXPOSED OUTDOOR AREAS



14-4210 Single Flush Mount w/Weatherproof Cover



14-4215 Dual Flush Mount w/Weatherproof Cover

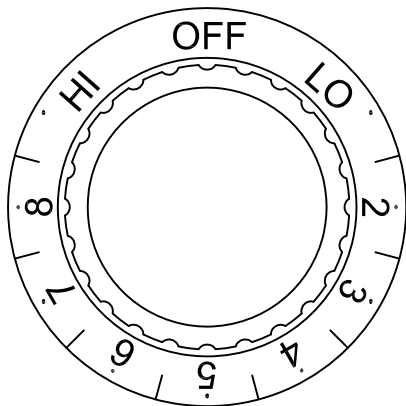
## SURFACE MOUNT FOR EXPOSED OUTDOOR AREAS



14-4220 Single Surface Mount w/Weatherproof Box



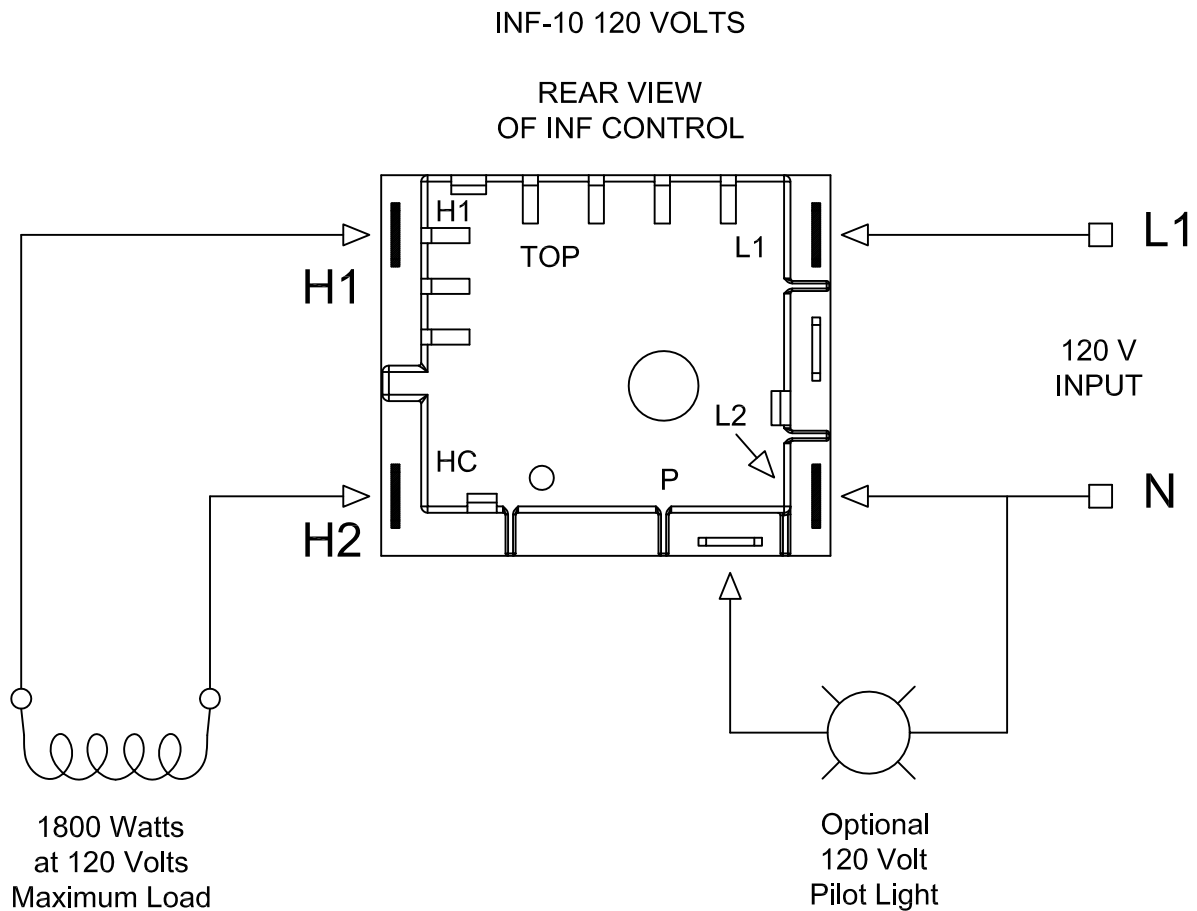
14-4225 Dual Surface Mount w/Weatherproof Box



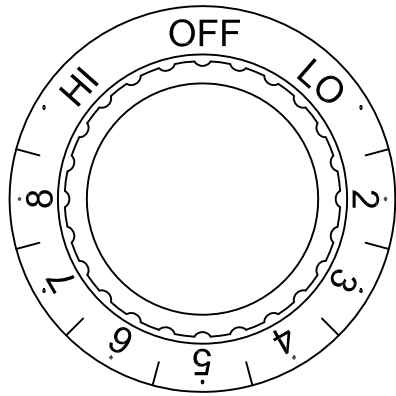
KNOB DETAIL

Mechanical Bi-Metal Operation  
 Double Pole Single Throw (DPST) Snap Action  
 120 VAC  
 1800 Watts Max  
 15 Amps Max

Note: Supplied with 4 Insulated Female Connectors



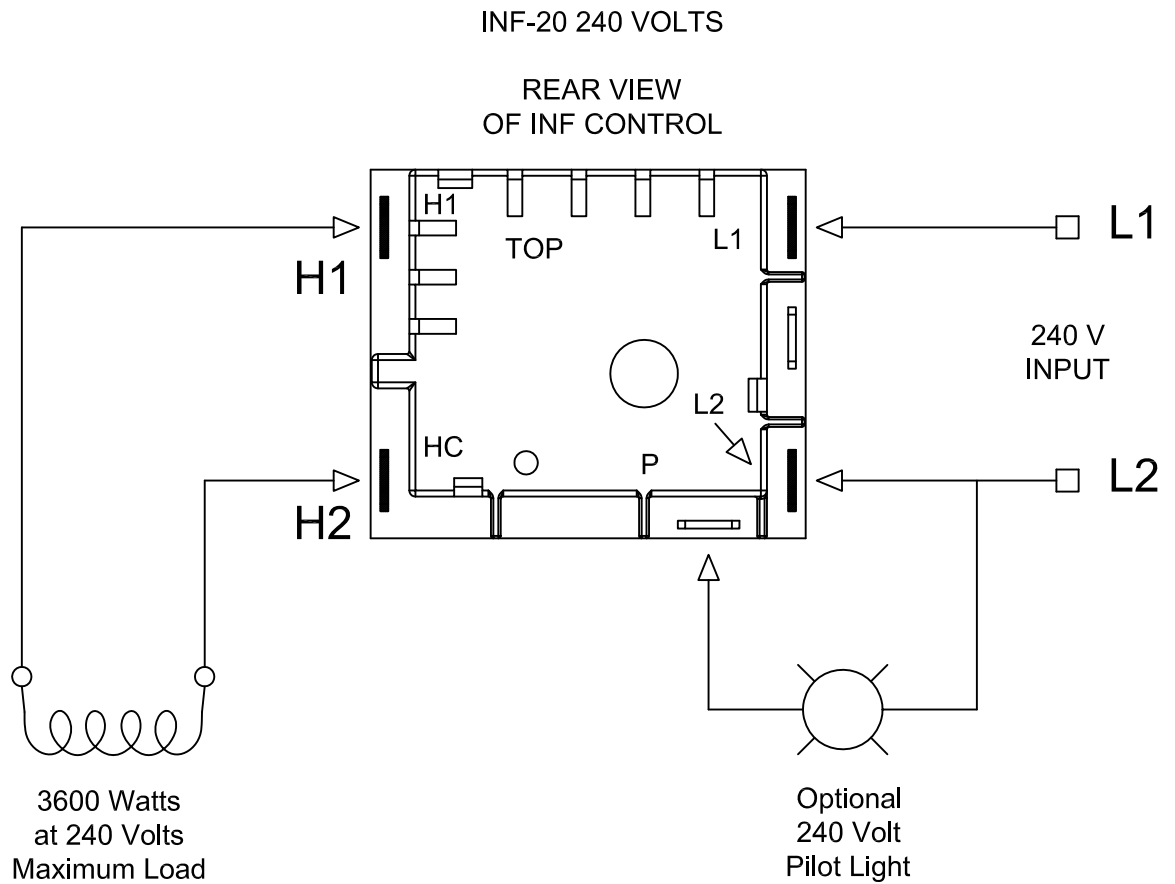
|  |           |   |  |
|--|-----------|---|--|
| <b>INFRATECH</b><br>www.infratech-usa.com        |           | 344 W 157th Street<br>Gardena, California 90248<br>Phone: (310) 354-1250<br>Fax: (310) 523-3674 |  |
| DISCRIPTION                                      |           |   |  |
| INF-10 INPUT REGULATOR<br>120 VOLT 1Ø 15 AMP MAX |           |   |  |
| DATE   | ITEM#     | 14-4092   |  |
| Feb. 10, 2017                                    | DRAWN BY: | MD  |  |



KNOB DETAIL

Mechanical Bi-Metal Operation  
 Double Pole Single Throw (DPST) Snap Action  
 240 VAC  
 3600 Watts Max  
 15 Amps Max

Note: Supplied with 4 Insulated Female Connectors



|  |           |   |  |
|--|-----------|---|--|
| <b>INFRATECH</b><br><small>www.infratech-usa.com</small>       |           | 344 W 157th Street<br>Gardena, California 90248<br>Phone: (310) 354-1250<br>Fax: (310) 523-3674 |  |
|  |           | DISCRIPTION   |  |
| <b>INF-20 INPUT REGULATOR</b><br><b>240 VOLT 1Ø 15 AMP MAX</b> |           |   |  |
| DATE   | ITEM#     | 14-4094   |  |
| Feb. 10, 2017  | DRAWN BY: | MD  |  |