

# Duplex/Stack Switch Assemblies

Duplex Stack Switches are designed for use with WD-Series dual element heaters.

- Low cost control option for all dual element heaters.
- Ability to turn on and off each element independently, providing effectively half power/ full power capabilities.
- Range 120/277 VAC (20 amps max per switch).

**IN-WALL FOR INDOOR OR PROTECTED OUTDOOR AREAS**



**14-4300** Single SS Wall Plate w/Gang Box



**14-4305** Dual SS Wall Plate w/Gang Box

**IN-WALL FOR EXPOSED OUTDOOR AREAS**



**14-4310** Single Flush Mount w/Weatherproof Cover



**14-4315** Dual Flush Mount w/Weatherproof Cover

**SURFACE MOUNT FOR EXPOSED OUTDOOR AREAS**

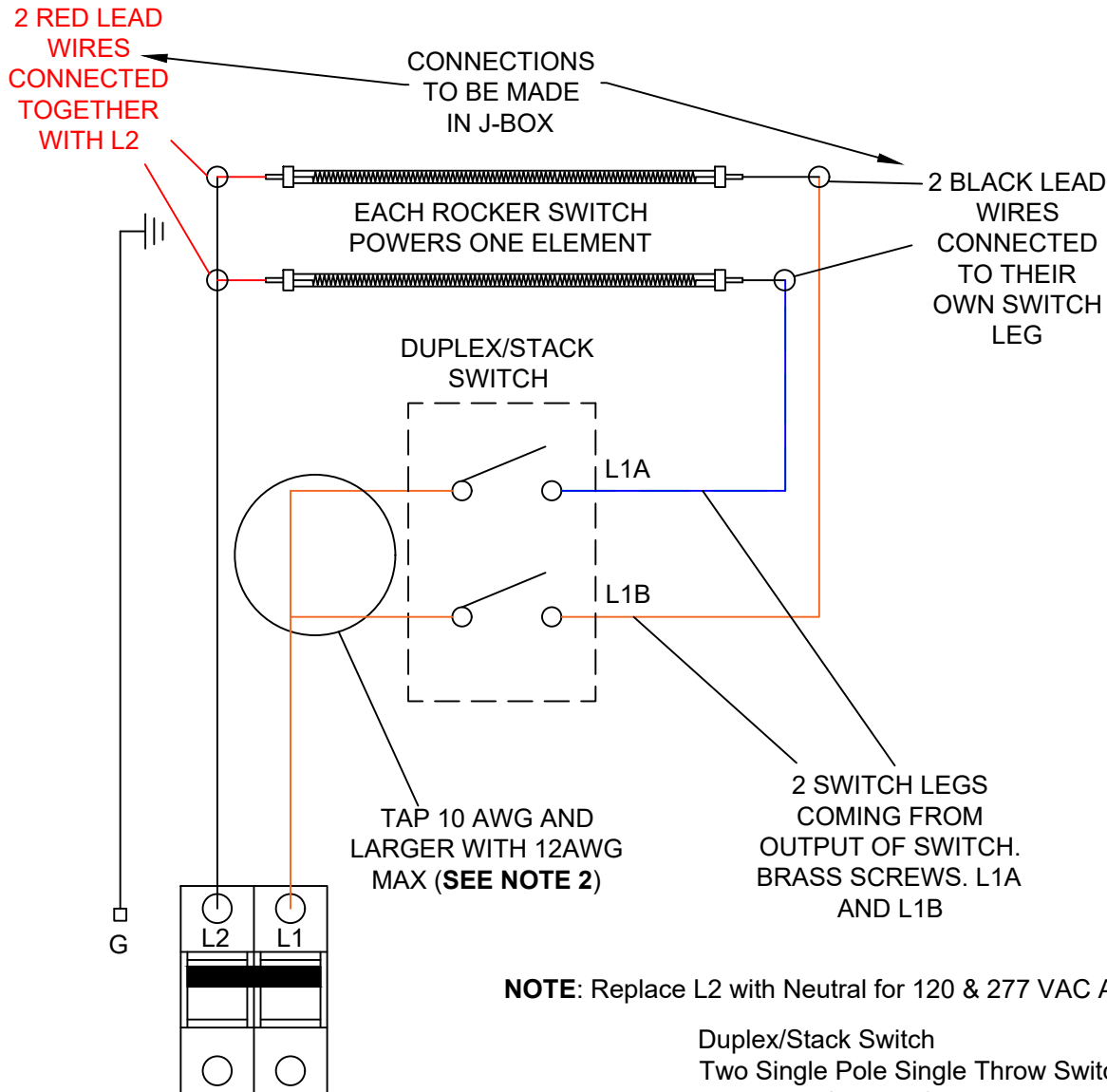


**14-4320** Single Surface Mount w/Weatherproof Box



**14-4325** Dual Surface Mount w/Weatherproof Box

**3 WIRE APPLICATION**  
**(FOR INSTALLING ONE HEATER WITH TWO ELEMENTS)**



**NOTE:** Replace L2 with Neutral for 120 & 277 VAC Applications.

Duplex/Stack Switch  
 Two Single Pole Single Throw Switches  
 Range:120/277 VAC  
 Recommended not to Exceed  
 120 VAC = 1800 Watts Max-Per Switch  
 208/220 VAC = 3000 Watts Max-Per Rocker Switch  
 240/277 VAC = 4000 Watts Max-Per Rocker Switch  
 20 Amps Max-Per Rocker Switch

**NOTES:**

1. **EACH INDIVIDUAL ROCKER SWITCH IS RATED FOR 20 AMPS MAX. (EG: ONE 6000 WATT 240VAC HEATER CAN BE CONTROLLED BY ONE DUPLEX STACK SWITCH ASSEMBLY WHEN THE CIRCUIT IS TAPPED CORRECTLY).**
2. **FOR TAPPING RULES, SEE NEC 210.24. LARGE BLUE WIRE NUT PROVIDED. USE OTHER EQUIVALENT METHOD IF PREFERRED.**
3. **ONE LINE ALWAYS HOT WHEN DUPLEX STACK SWITCHES ARE IN OFF POSITION. DISCONNECT MUST BE PROVIDED WITHIN VICINITY OF HEATER FOR SERVICING THAT OPENS ALL UNGROUNDED CONDUCTORS. REFER TO LOCAL CODE AND NATIONAL CODE FOR DISCONNECT LOCATION.**

**NOTE: ALL INFRA TECH PRODUCTS MUST BE INSTALLED BY A LICENSED ELECTRICIAN**

<b>INFRA TECH</b> www.infratech-usa.com		15700 S. Figueroa St. Gardena, California 90248 Phone: (310) 354-1250 Fax: (310) 523-3674
DESCRIPTION		
DUPLEX/STACK SWITCH WIRING 120/277 VAC 20 AMP PER ROCKER SWITCH		
DATE	ITEM#	N/A
Dec. 17 2019	DRAWN BY:	CL