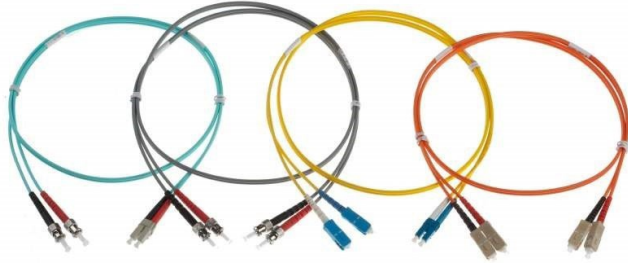


# xSiCute Standard Length ZIP Duplex Fibre Patch Leads



The xSiCute range of imported standard length ZIP duplex 2.8mm dia fibre patch leads are sourced from an approved manufacturer providing a good quality cost effective solution for general networking in cabinet patching applications.

Available in multimode OM1, OM3, OM4 and singlemode OS2 versions. Connectors include LC, SC, ST and FC options. All patch leads are factory polished, tested and individually bagged with the test data on the bag label.

Patch leads have 2.8mm diameter cables (1.8mm on request) with 900um tight buffered fibres surrounded by aramid yarns and an LSOH sheath with ceramic ferrule connectors. These multimode patch leads use red and black strain relief boots and Singlemode patch leads use blue and white boots for ease of identification. Connectors have protective fitted dust covers.

These patch leads have a maximum expected insertion loss that should not exceed 0.3dB but will typically be lower.

- Cost effective imported range for general in cabinet patching applications.
- 2.8mm diameter LSOH ZIP cables.
- Standard lengths available from stock.
- LC, SC, ST and FC connectors with ceramic ferrules.
- Factory polished and tested.
- Meets/Exceeds all TIA/EIA-568-B.3 performance requirements, Telecordia GR326-COM & IEC 61754-20.

Characteristic	Singlemode	Multimode
Insertion Loss	0.3dB	0.3dB
Typical	0.25dB	0.2dB
Return Loss (Greater than)	-50dB	-20dB

Tensile Strength	300N
Crush Resistance	1000N
Min Bend Radius: Loaded	60mm
Min Bend Radius: Unloaded	30mm
Operating Temperature	-20°C to 60°C

Also see our premium quality in-house UK manufactured patch cords which can be manufactured to meet your precise requirements for business-critical applications. Range includes bespoke lengths, flat twin ruggedised, APC, armoured and simplex versions and assemblies utilising CPR Cca and B2ca cable.

# xSiCute Standard Length ZIP Duplex Fibre Patch Leads

## Product Part Numbers:

<u>Connector End 1</u>	<u>Connector End 2</u>	<u>Fibre Type</u>	<u>Cable Type</u>	<u>Length (Mtrs)</u>	<u>Std Cable Colour</u>	<u>Designation</u>
<b>LCD-</b>	<b>SCD-</b>	<b>54-</b>	<b>ZP-</b>	<b>03-</b>	<b>HV-</b>	<b>CE</b>
LCD = LC Duplex	LCD = LC Duplex	53 = OM3 Multimode	ZP = Twin ZIP Duplex (2.8mm dia)	0.5 = 0.5Mtrs	AQ = OM3 Aqua	CE
SCD = SC Duplex	SCD = SC Duplex	54 = OM4 Multimode		01 = 1Mtr	HV = OM4 Heather Violet	
ST = ST	ST = ST	9 = OS2 Singlemode		1.5 = 1.5Mtr	YW = OS2 Yellow	
FC = FC	FC = FC			02 = 2Mtr		
				03 = 3Mtr		
				05 = 5Mtr		
				10 = 10Mtr		
				15 = 15Mtr		
				20 = 20Mtr		
				25 = 25Mtr		
				30 = 30Mtr		

**Example:** LCD-SCD-54-ZP-03-HV-CE is an LC Duplex to SC Duplex OM4 Twin ZIP Duplex 3Mtr with Heather Violet cable