



EFS
THE SOLUTION PROVIDER

Engineering Fabrication Solutions Ltd.

E-RANGE RACK ASSEMBLY INSTRUCTIONS



Engineering Fabrication Solutions Ltd.

Engineering Fabrication Solutions
Limited
Brue Way
Walrow Industrial Estate
Highbridge

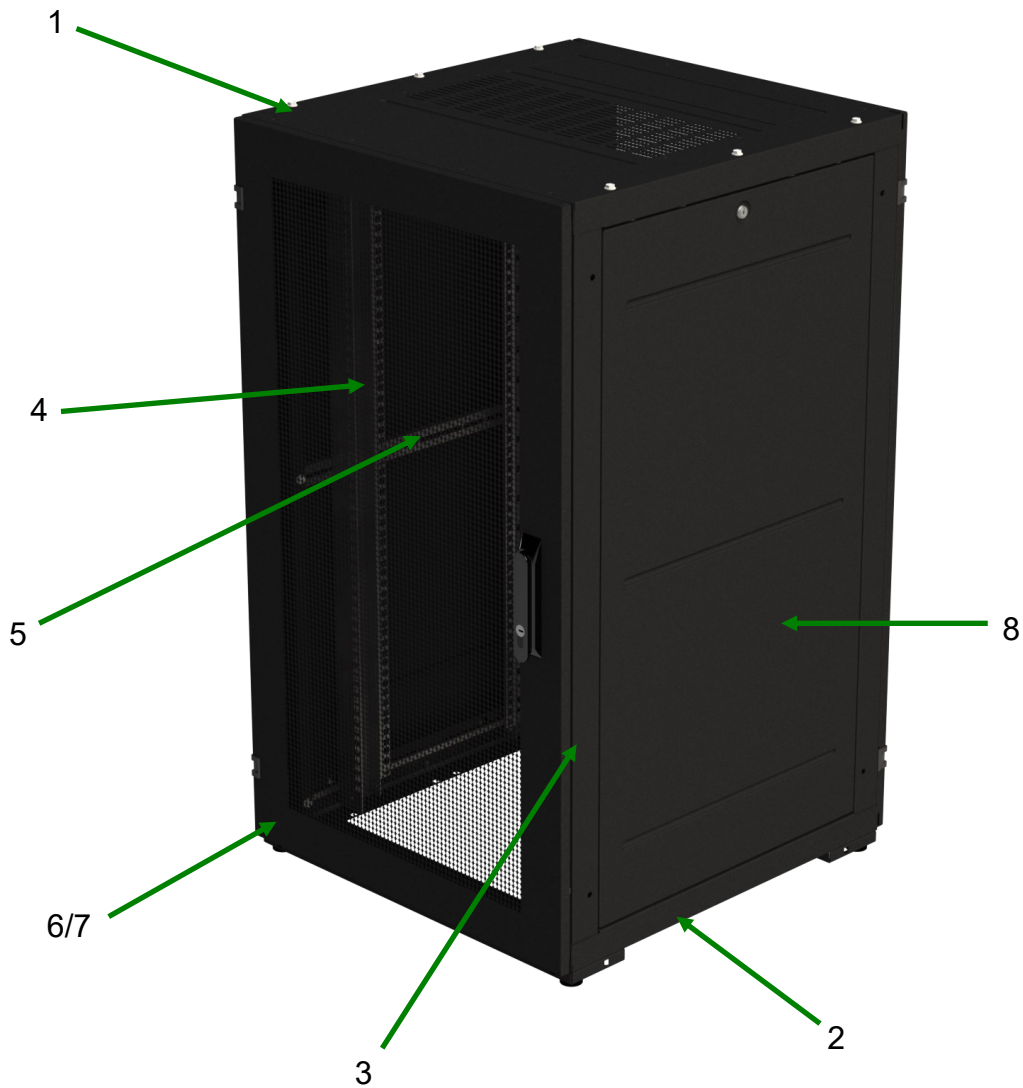
Phone: 07578 598550
Email: sales@e-fs.co.uk



EFS
THE SOLUTION PROVIDER

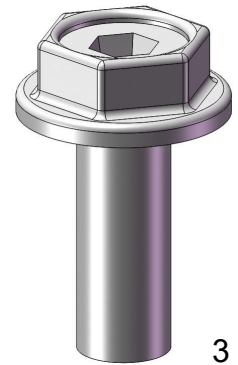
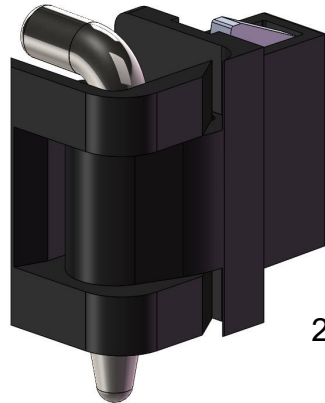
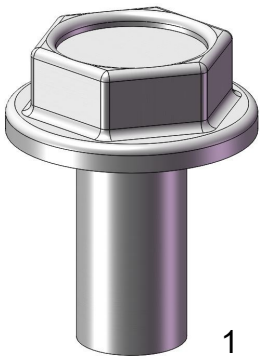


No.	Part Number (Example)	Part Name	Qty
1	ERTP42U612B	ER—Top Panel Assembly (600w 800w) (600d-1200d)	1
2	ERBP42U612B	ER—Bottom Panel Assembly (600w 800w) (600d-1200d)	1
3	ERCS42UB	ER—Corner Styles (9u-47u)	4
4	ERVR42UB	ER—Vertical Rail Assembly (600w 9u-47u) (800w 21u-47u)	2
5	ERSS1200DB	ER—Side Stiffeners (600d-1200d)	2
6	ERVD42U6B	ER—Single Doors (600w 800w) (9u-47u) - Configuration Dependant	1/2
7	ERVDD42U6B	ER—Double Doors (600w 800w) (21u-47u) - Configuration Dependant	2
8	ERSP42U12B	ER—Side Panel Assembly (600d-1200d) (9u-47u)	2





No.	Part Number (Example)	Part Description	Qty
1	ENVM6X12TPT	M6 x 12 Taptite Screw - 10mm Driver Required	16
2	NR-HINGE	Snap in Door Hinge - No Tools Required	4/6
3	ENVM6X12HEX	M6 x 12 Hex Head Screw - 10mm Driver Required	8
Tools Needed			
1	10mm Socket	10mm Socket for power driver	
2	Power Driver	Power Driver needed to apply recommended torque to taptite screws.	
3	10mm Spanner	Needed to tighten screws in 800w adaptor rails.	

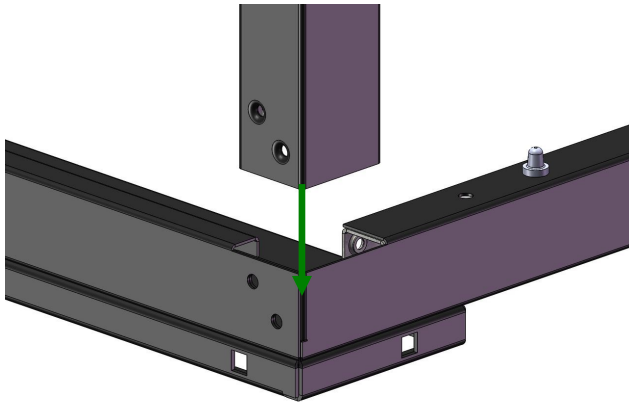




EFS
THE SOLUTION PROVIDER

Engineering Fabrication Solutions Ltd.

Frame Assembly - Fitting Corner Styles

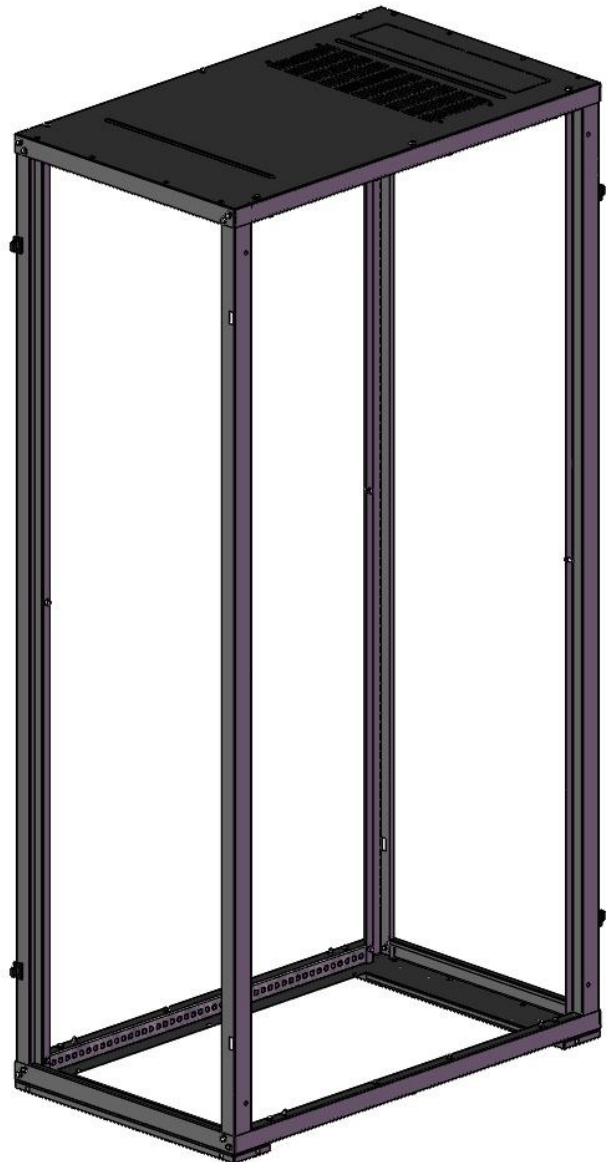
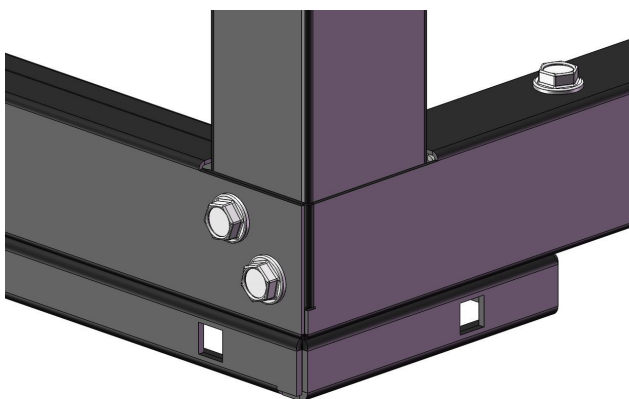
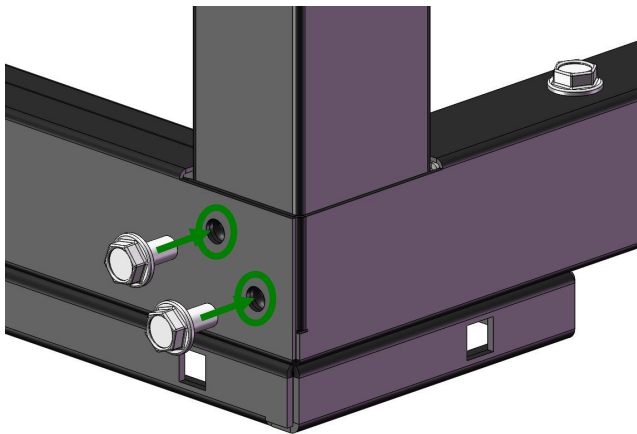


Step 1 - Locate Bottom Panel and Corner Style

Step 2 - Offer up Corner Style to Bottom Panel and Locate into Corner of Bottom Panel as shown, Locate M6x12TPT Screws.

Step 3 - Screw M6x12TPT Screws into Corner Styles using holes highlighted in Fig.2, use Power Drill and 10mm Socket to install screws. Torque to 12nm.

Step 4 - Repeat Step 1-3 for 4 Corner Styles, then for Top Panel, once completed stand rack on base (2 Person Operation)

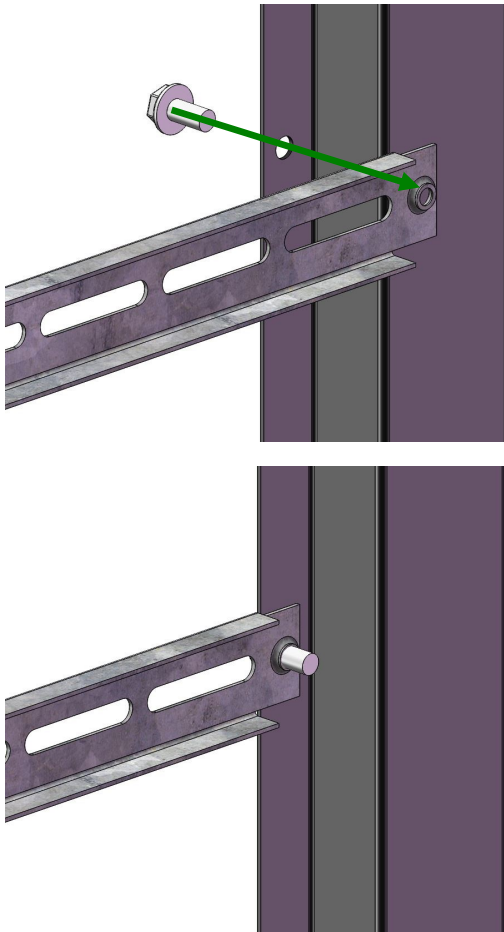




EFS
THE SOLUTION PROVIDER

Engineering Fabrication Solutions Ltd.

Frame Assembly - Fitting Mid Stiffeners



Step 1 - Find Mid-Stiffener

Step 2 - Locate hole in Centre of Corner Style, offer up Mid Stiffener to Corner Style.

Step 3 - Screw M6x12TPT Screws into Mid-Stiffener as shown, use Power Drill and 10mm Socket to install screws. Torque to 12nm.

Step 4 - Repeat Step 1-3 for both Mid Stiffeners. Frame should look as shown in image below.

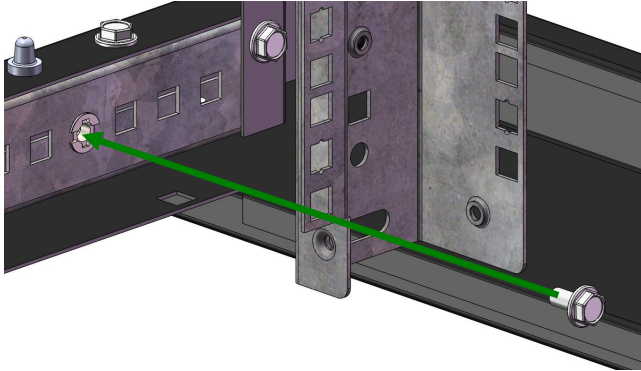




EFS
THE SOLUTION PROVIDER

Engineering Fabrication Solutions Ltd.

Frame Assembly - Fitting 19" Vertical Rails

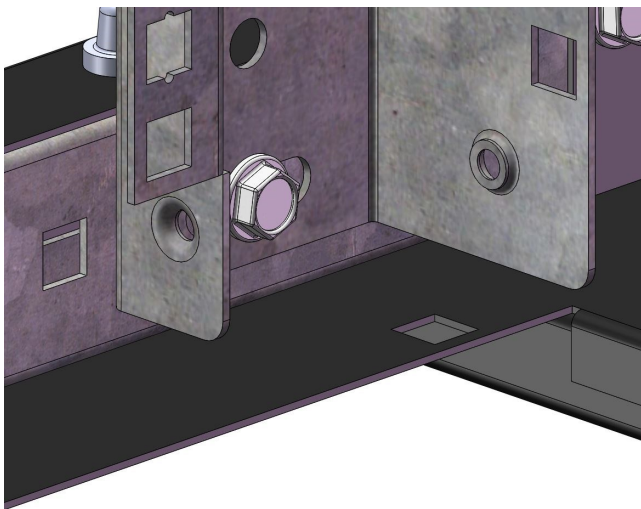


Step 1 - Find Vertical Rails

Step 2 - Offer up to M6 Cage Nuts fitted to the sides of the Top and Bottom Panel.

Step 3 - Screw M6x12 Hex Head Screws into M6 Cage Nuts through the slot in the 19" Rails as shown .

Step 4 - Repeat Step 1-3 for 4 19" Vertical Rails. Frame should look as shown in image below.

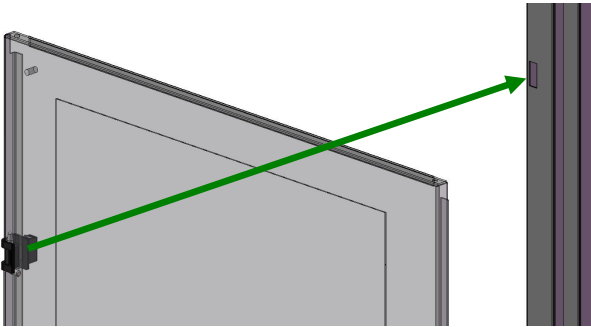




EFS
THE SOLUTION PROVIDER

Engineering Fabrication Solutions Ltd.

Frame Assembly - Fitting Doors

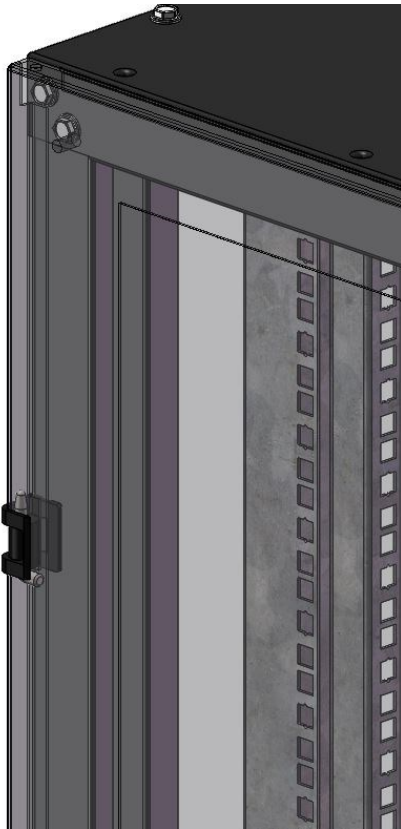


Step 1 - Find Rack Doors

Step 2 - Offer up to Door to Corner Style, Line up door hinges with rectangular slots in corner styles and push to secure

Step 3 - Repeat Step 2 for remaining hinge on door.

Step 4 - Repeat Step 1-3 for remaining doors. Rack should look like image below.

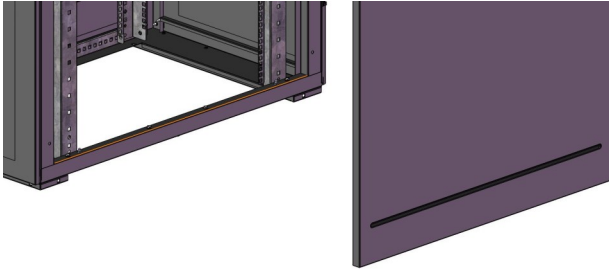




EFS
THE SOLUTION PROVIDER

Engineering Fabrication Solutions Ltd.

Frame Assembly - Fitting Side Panels



Step 1 - Find Side Panels

Step 2 - Offer up bottom of Side Panel with Bottom Panel on rack, sit the Side Panel on the Side Panel Pins.

Step 3 - Tip Side Panel towards rack and Turn Lock until Secure

Step 4 - Repeat for Remaining Side Panel. Rack should look like image below.

