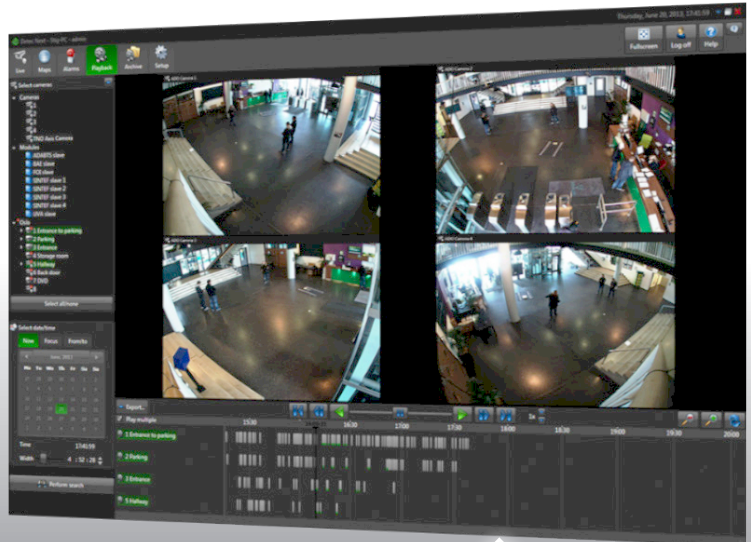




D E T E C



Detec Next Client

DATA SHEET

License for connecting a client to a Detec Next server. The number of clients is unlimited. As a standard, a client license will include Live-, Map-, Status- and Configuration-mode. Other modes will be available depending on the type of camera license and database structure you choose. A certain type of mode may also be a separate option.

When buying several client licenses in a system, these can be set up as a monitor matrix where an operator decides what to display on other monitors - whether these monitors are located in the same control room environment or remotely via network.

KEY FEATURES

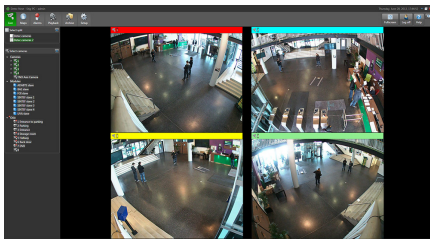


DESCRIPTION

License for connecting a client to a Detec Next server. The number of clients is unlimited. As a standard, a client license will include Live-, Map-, Status- and Configuration-mode. Other modes will be available depending on the type of camera license and database structure you choose. A certain type of mode may also be a separate option.

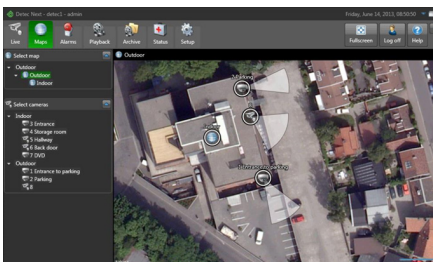
Some of the features that go through multiple types of modes are camera list view where you sort and group cameras, camera window with save and print functions for still images, digital zoom and PTZ-control in image, maximizing/minimizing/closing a camera window, and full-screen view.

You use Live-mode to see camera images and other data (e.g. audio) in real-time. In Live-mode, you can select split patterns with predefined views and cameras. Cameras displayed in split patterns will be marked in the camera list on the left side of the screen. Alternatively, you can select one or more cameras directly from the camera list, and the camera windows will automatically position on screen.



Live-mode with camera color allocation

You use Map-mode when you want to see cameras placed on maps. Icons on the map indicate position and field-of-view for the cameras. You can also insert icons for clients, servers and other types of modules. You also have the possibility of making a free number of sub-maps. You can select a map from a list of maps on the left side of the screen to display this map. Cameras in the map will be marked in the camera list view. Alternatively, you can select a camera directly from the camera list, and the corresponding map will open.



Map-mode simplifies finding camera locations

With multiple client licenses, then you can use the Detec Next Software as



With multiple client licenses you can set up a monitor matrix where different monitors have different roles, e.g. as illustrated, an operator monitor, a display monitor and an alarm monitor.

a monitor matrix, meaning that one client can decide what will be shown on another client or all other clients – whether it is split patterns, maps or alarms.

You use Status-mode to check on the system's health status. This can be useful when addressing installer or Detec AS for technical support.

In Configuration-mode, you can do the same as has been addressed under Administrator tools for a new Detec Next license (DTC-KEY-USB/SW). Additionally, you can access the remaining system settings, client settings for the local machine you are working on, client settings for user group, and define what servers you shall connect to a client.

cameras and maps, makes it easy to find a camera, and which map this belongs to.

- To select a camera from the camera list in Map-mode, where the corresponding map automatically shows up, makes it easy to find the location of a camera quickly.
- You can easily share split patterns, maps and alarms between clients.
- The client user interface increase the system's flexibility as administrator configurations can be set either directly on server or via client.
- Help-functions and Status-mode makes it easy for the user to figure out features and settings, or get technical support.

ADVANTAGES

- Detec Next Software is very flexible and scalable, and can be extended with a free number of client licenses.
- Multiple modes with different purposes, with user/user group defined access, makes the user interface clean and user-friendly.
- Features and design elements go through multiple modes and increases the recognition factor and user-friendliness.
- Readily predefined split patterns with user controlled access and naming of both patterns and cameras, as well as automatic fitting of cameras on screen in Live-mode, reduces time spent to find the camera or cameras you are in search for.
- Marking of cameras in the camera list when selecting a split pattern, makes it easy to find a camera and which group it belongs to.
- Map-mode with user controlled access and icons for all modules on a map, with the possibility of adding sub-maps, makes it easy to find locations and respond to any events.
- Marking of camera in the camera list when selecting a map, and naming of both

Part no.: DTC-SWN-UI1

Compatibles/Accessories:

- Detec Next Software - new system (DTC-KEY-USB/SW)
- Detec Next Core Camera/Module License (DTC-SWN-C1)
- Detec Next Database Structure (DTC-SWN-STORAGE1)
- Vectorized advanced Map-mode (DTC-SWN-AMAP1)
- Investigation-mode/Advanced Query (DTC-SWN-AQ)
- Display Accelerator/H.264 Decoder (DTC-SWN-H264V)

System Requirements:

Microsoft Windows 7/ Server 2012 R2, 32 or 64 bit

Minimum Core i3 processor, 4GB RAM or better. Core i7 processor, 8GB RAM recommended.

The performance of client machines can be enhanced by using graphics cards for H.264 decoding. See www.detec.no for model recommendations.

DETEC AS

Sandakerveien 24C, Bldg. A4
N-0473 Oslo

Phone: +47 23 23 22 83

www.detec.no



D E T E C