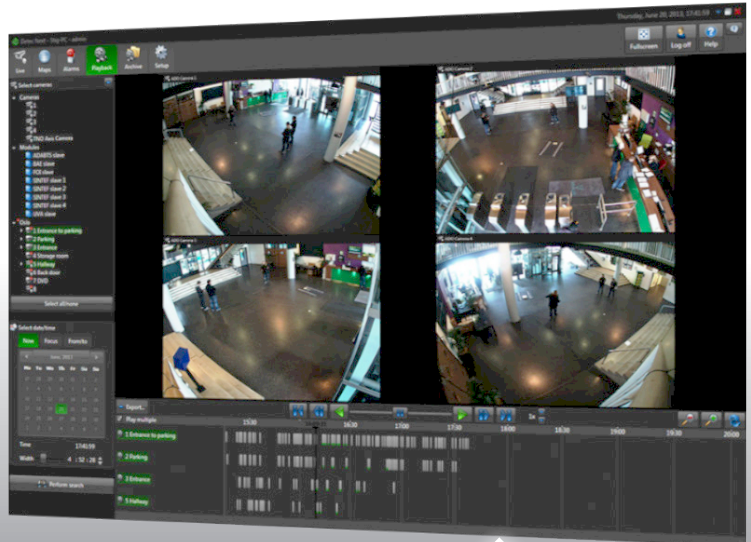




D E T E C



Detec Next Advanced+ Camera/Module License

DATA SHEET



License for connecting an IP-based camera or module/sensor to a Detec Next System. License includes open IP standard, advanced video analysis, advanced object tracking, Alarm-mode with full exploitation of alarm management, prioritized alarm list and increased filtering opportunities, counter lines with statistics, and video analysis alarms via e-mail.

Additionally, Detec Next Advanced+ Camera/Module License inherits all functions from Advanced and Core licenses. The number of modules are in principle unlimited, and the server's performance limits the number. If the module delivers multiple formats from the same IP address, such as multiple video streams, video motion detection, IO and audio, these formats are supported too.

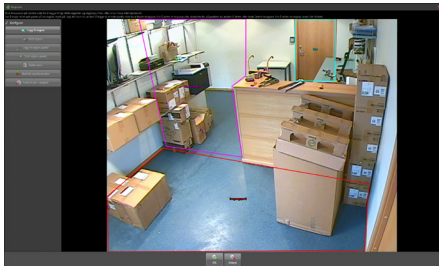
KEY FEATURES

- Open IP standard
- PTZ control
- Command buttons
- Schedule
- Heatmap-mode
- Advanced Video Analysis
- Counter lines-mode
- Alarm-mode
- WEB-warning
- Prioritized Alarm List
- Advanced Schedule
- PTZ Guard Tour

DESCRIPTION

Detec Next Advanced+ Camera/Module License inherits all features from Detec Next Advanced Camera/Module License. In addition, it has a number of features on its own.

What separates type of camera licenses from each other is detection level. While Advanced has advanced detection, Advanced+ has advanced video analysis, which first and foremost mean advanced object tracking, direction and speed between regions, and perspective compensation on adjustable objects. In other words, settings with a powerful effect, enabling to move from advanced detection to a more thorough analysis of what the detected objects are doing. This makes Advanced+ highly fit for e.g. perimeter security and intrusion detection.



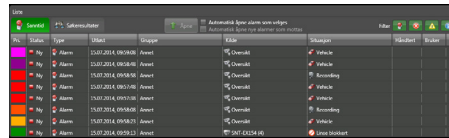
Detec PRO has a number of settings for advanced video analysis

In Advanced, an object staying in a region for a set time, will trigger recordings, while with Advanced+ you can set up more advanced criteria on how alarms/recordings should trigger. In Advanced+ you can define up to two objects. Typically, these will be walking person and car. You can adjust the perspective, enabling you to define object size in front and at the back of the image. You can also define direction and speed between regions, so that you can say that movement in one direction at a certain speed is allowed, while movement in the opposite direction is not allowed. This can be useful on e.g. a road. What really makes the video analysis advanced is the object tracking. Object detection in itself is fragile because objects can blend into the background, objects can cross each other, melt together etc. With object tracking you have more control on number of objects and how they move. Thus, you should rely on rather generous object sizes (fuzzy logic), and rather adjust criteria for motion patterns in order to get a low false-alarm rate, while still getting all important events.

It is when you get to Advanced+ you get good use of Alarm-mode as the video analysis present a dominant number of real alarms. You also have multiple alarm definitions, you can configure alarms to call them what you like, and these will be uniquely marked in the alarm list.

With multiple alarm types, you can also give different alarms different priority. Then the alarms with the highest priority will be on top of the

alarm list until it has been acknowledged.



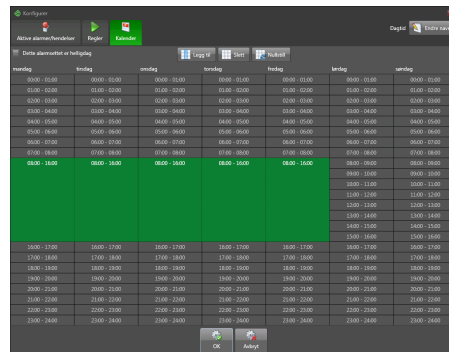
Prioritized alarm list makes it easy for operators to identify important events

With a more useful Alarm-mode it makes more sense to have a manned security centre, where operators can monitor and acknowledge alarms. Advanced+ is well suited if operators shall watch footage and take action on alarms in real-time.

Advanced+ also gives you access to a new mode for counter lines.

With this mode you can place a free number of counter lines anywhere in the camera image. You can also set up counter lines on recordings. This makes it possible to do counting in real-time, and also compare periods with counting statistics against each other, e.g. to measure general activity or effect of campaigns or moving merchandise in a shop, moving furniture in the lobby of an office building, or re-directing traffic on a public transport station.

Advanced+ also gives you the desired quality on command buttons and command schedules to be triggered by video detection. For example, you can send a video detection alarm by e-mail, or alarms can be sent to dedicated spot monitors in a manned security guard centre.



Schedule on command sets. Each command can have multiple rules for actions on other modules in the system

ADVANTAGES

- Advanced video analysis settings reduce undesired alarms

- Multiple alarm definitions allow for prioritization of alarms and increase filtering opportunities on recordings
- Alarm-mode become more useful, and operators are presented with alarms to work with in real-time
- Counter lines-mode makes it possible to follow activity in real-time and compare periods with counting against each other
- Video analysis can trigger command buttons and command schedules, providing intelligent automation of the system
- Better video analysis makes it practical to send alarms to spot-monitors in guard control rooms and on e-mail

Part no.: DTC-SWN-A+1

Compatibles/Accessories:

- Detec Next Programvare - new system (DTC-KEY-USB/SW)
- Detec Algorithm Accelerator (DTC-SWN-GPU)
- Detec Next Client License (DTC-SWN-UI1)
- Database Structure for Storage of Recordings (DTC-SWN-STORAGE1)
- Upgrade from Advanced to PRO (DTC-UPGR-A1-A+1)
- Software Update Agreement Detec Next PRO Camera/Module License (DTC-AGR-A+1)

System Requirements:

Microsoft Windows 10/ Server 2012 R2, 64 bit

Core i7 processor, 8GB RAM

Graphics card for more rapid processing of algorithms on GPU. See www.detec.no for model recommendations.

Refer to separate list over supported cameras/modules on www.detec.no. New products can be added on request.

DETEC AS

Sandakerveien 24C, Bldg. A4
N-0473 Oslo

Phone: +47 23 23 22 83

www.detec.no



D E T E C