

OGGLAB

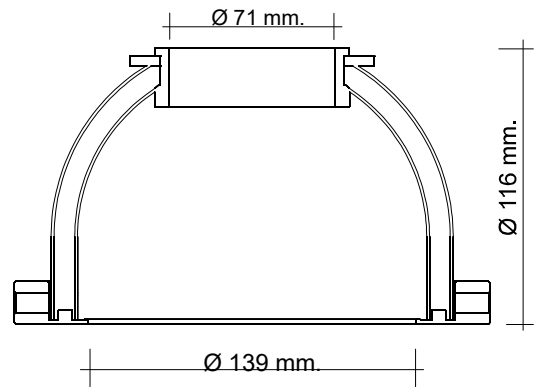
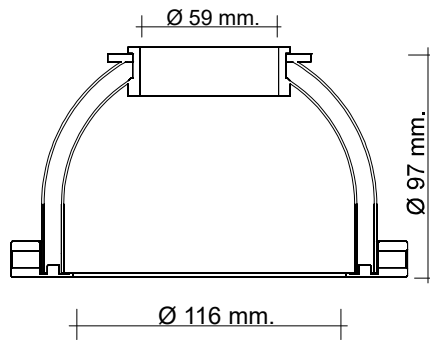
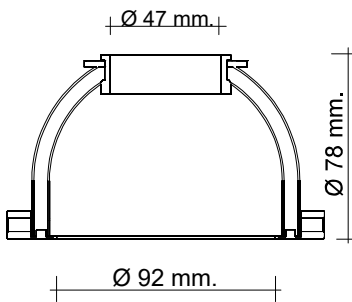
DOME 1-2 WALLS



DOME 100

DOME 125

DOME 150



The OggLab Domes are produced in three different sizes to cover almost all of the subjects normally shot in macro photography, to adapt to different situations they can be easily used with one or two walls, the latter solution allows the best diffusion of the light source useful with subjects very reflective, the single wall used with relatively low reflective subjects to take advantage of the maximum brightness.

An easily removable black sector allows for shading on one side.

The domes are produced with FDM technology which offers the advantage of thin walls (0.6 mm.), to minimize the loss due to the thickness of the material, and knurled to obtain a better diffusion of light.

Transparency: 1 wall 70% 2 walls 55%

The base has four 1/4 "threads in the event that you want to use it in a non-vertical set-up using articulated arms.

