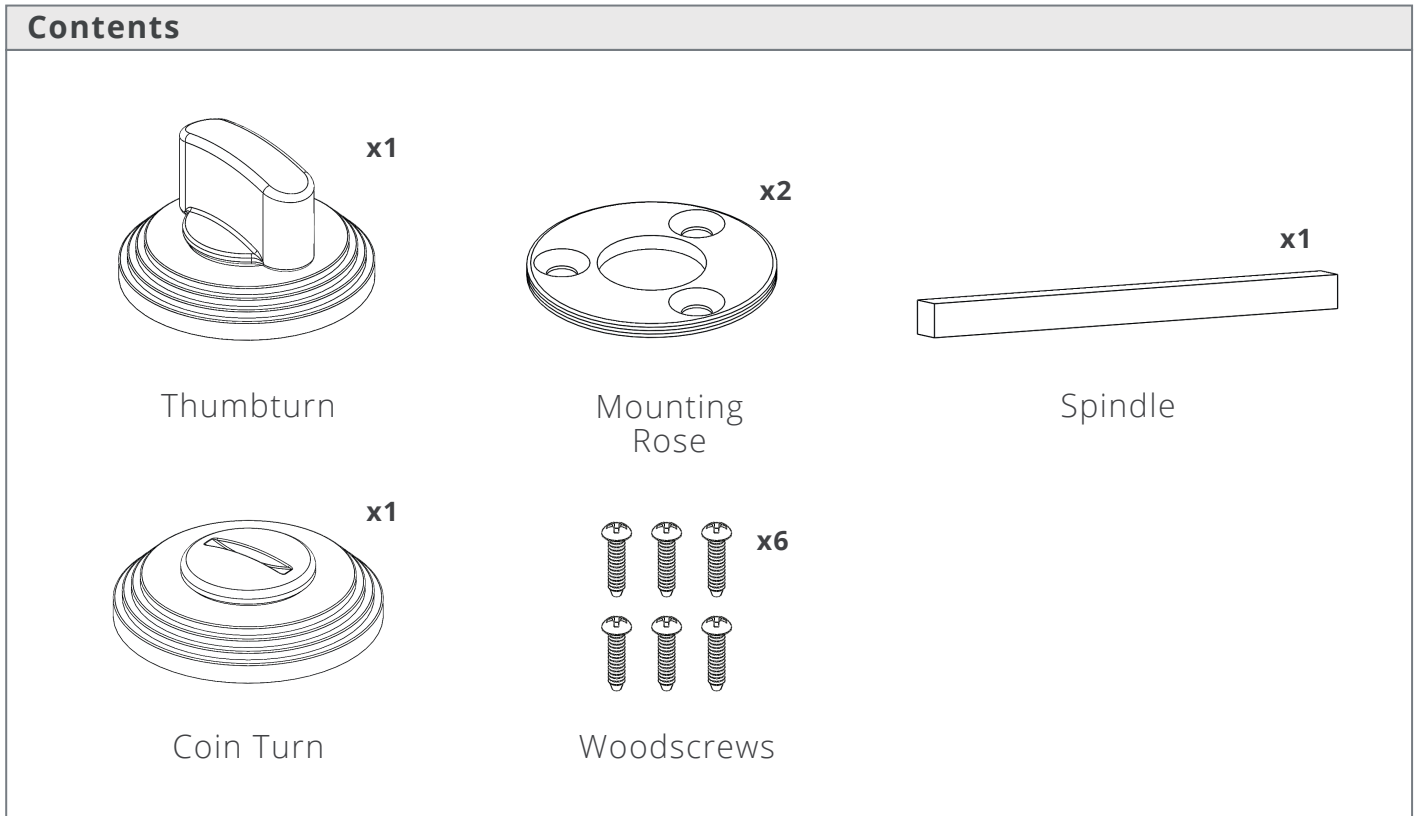


Thumbturn Instructions

Corston thumbturns are made of solid brass and have a minimal design. We recommend using Corston thumbturns with Corston Locks.



Troubleshooting

Check that the mounting plates are aligned properly through the lock. If they are miss-aligned, then the movement of the thumbturn may not be smooth.

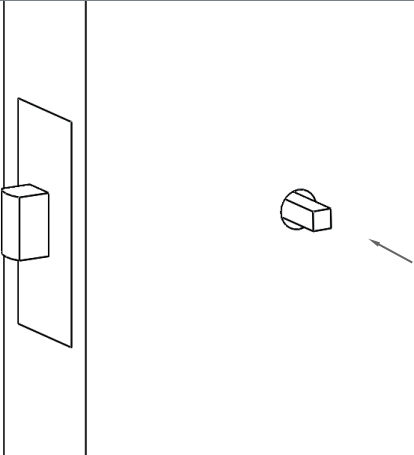
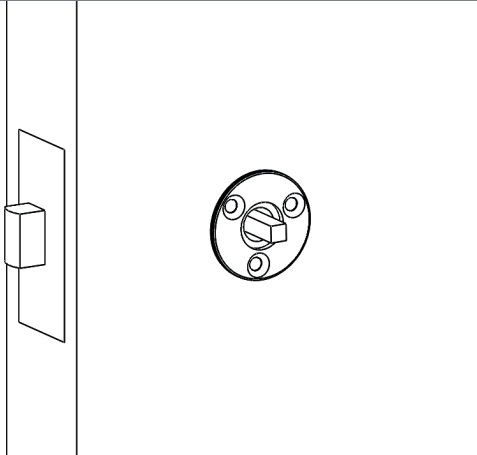
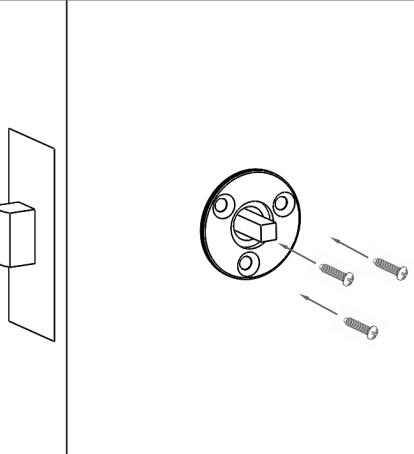
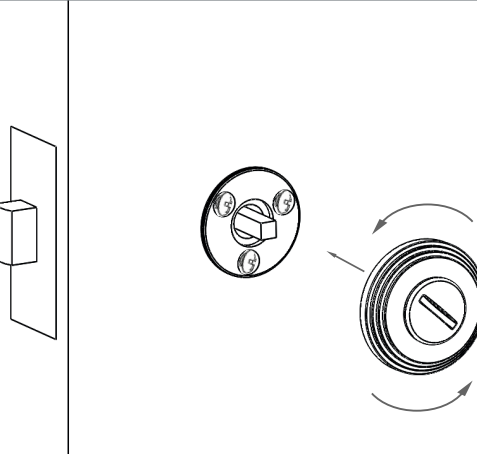
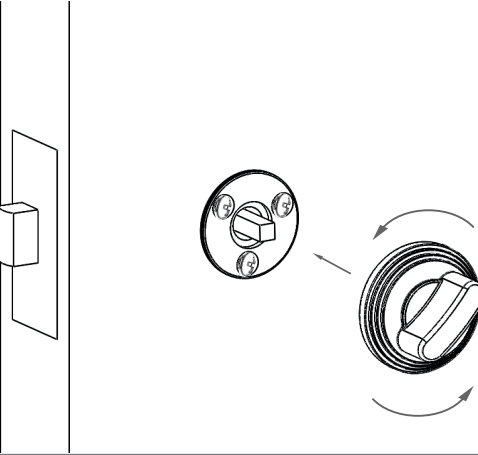
Check the faces of the door are even and level, without any excess paint that can prevent the mounting plates from sitting flat on the door surface.

Care Instructions

Use mild detergent and a damp cloth to maintain the handles, avoiding chemical cleaners.

All finishes will age and develop over time. If brass cleaner is used it will remove the protective lacquer. Only do this if an aged brass patina is desired.

Thumbturn Instructions

1. Fit the lock into the door	2. Attach the mounting rose to the door
	
<p>First fit the lock in to the door (see lock fitting instructions if not already installed)</p>	<p>Place the mounting plate over the centre of the spindle hole and mark the fixing plate holes.</p>
3. Attach the fixing plates	4. Attach the coin turn
	
<p>Using a 3mm drill bit, drill the pilot holes for mounting plate. Using the wood screws, attach the fixing plates.</p>	<p>Attach the coin turn by screwing it to the mounting plate on the outside of the door. Side the spindle through the lock and in to the coin turn.</p>
5. Attach the thumbturn	
	
<p>Attach the thumb turn but screwing it on to the remaining mounting plate. Test the lock use to ensure that it is engaging the lock correctly.</p>	