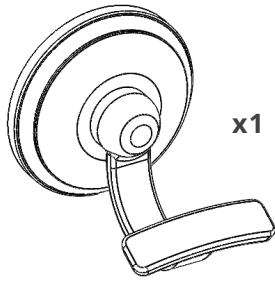


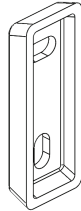
## Concealed Fixing Hook Installation Instructions

### Contents



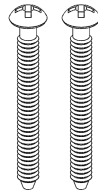
x1

Hook



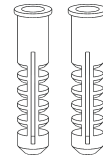
x1

Wall  
Bracket



x2

Wall  
Screws



x2

Plastic Wall  
Fittings (Solid  
Wall)



x1

Grub  
Screw

### Fitting

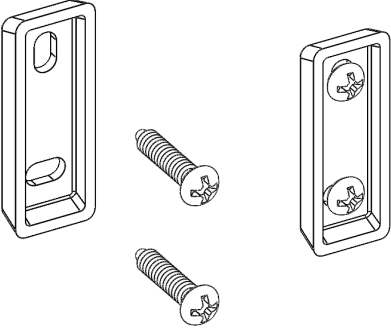
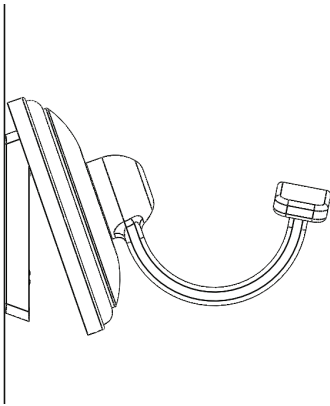
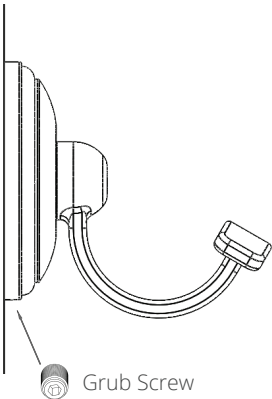
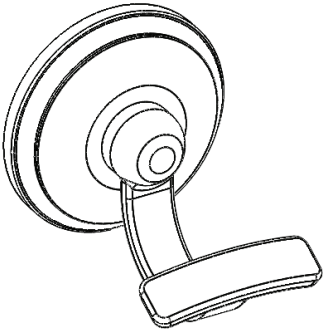
Concealed fixing hooks are installed onto a wall bracket. Plastic wall fixings are supplied to attach the wall bracket, which are suitable for solid brick or concrete walls. If you have another type of wall, use specialist fixings.

### Care Instructions

Use mild detergent and a damp cloth to maintain the handles, avoiding chemical cleaners. Touching the hardware with another metal or hard object is likely to scratch and/or damage it.

**All finishes will age and develop over time.** If brass cleaner is used, it will remove the protective lacquer. Only do this if an aged brass patina is desired.

## Concealed Fixing Hook Installation Instructions

1. Drill a hole & attach fittings	2. Fit the hook onto the bracket
	
<p>Mark and drill an 8mm hole, attach the bracket to the wall using the correct wall fixings.</p>	<p>When fitting the hook on to the bracket make sure the top edge of the bracket connects with the ridge of the hook.</p>
3. Tighten the grub screw	4. Check the hook is secure
 <p>Grub Screw</p>	
<p>Tighten the grub screw on the bottom edge of the hook a allen key. Be careful not to over-tighten the screw.</p>	