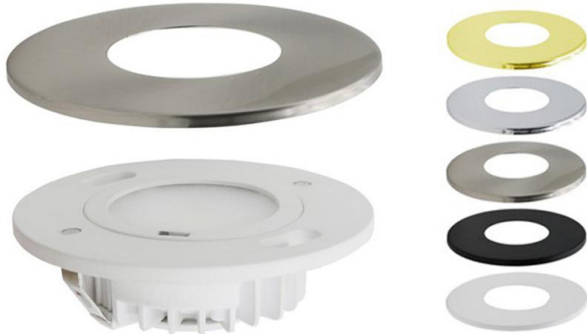


## SPECIFICATION SHEET

JOB NAME: \_\_\_\_\_

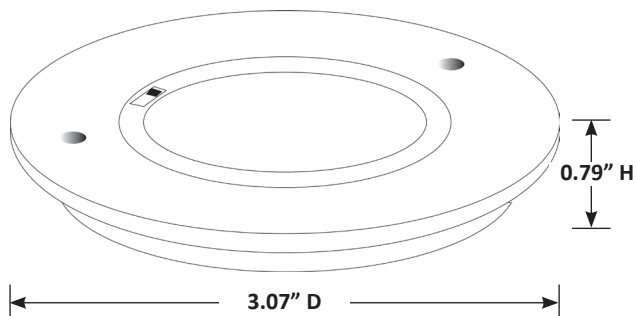
LOCATION: \_\_\_\_\_

QUOTE/REF#: \_\_\_\_\_



## SPECIFICATIONS

<b>Brightness:</b>	330 Lumens
<b>Power:</b>	3 Watt
<b>Input Voltage:</b>	12V DC
<b>LED CCT:</b>	Selectable 3000K / 4000K / 6000K
<b>IP Rating:</b>	IP20
<b>Environment:</b>	Indoor Use - Dry Location
<b>Dimmable:</b>	Yes, if used with Dimmable Driver
<b>Beam Angle:</b>	103.5°
<b>LED Density:</b>	1 LEDs per Fixture
<b>Cut-out:</b>	1.97 in / 50.04 mm Diameter
<b>Diameter:</b>	3.07 in / 77.98 mm
<b>Depth:</b>	0.79 in / 20.07 mm
<b>Finish:</b>	Black, White, Brush Nickel, Chrome, Gold
<b>Mounting:</b>	Recessed or Surface Mount
<b>Manufacturer:</b>	Elumalight
<b>Rating:</b>	UL, ETL Listed
<b>Avg. Lifetime:</b>	± 30,000 - 50,000 hours
<b>* Required:</b>	12V DC LED Power Supply, sold separately.



## DESCRIPTION

The 12V DC LED CCT Selectable puck lights are the energy-efficient, bright, and ultra-low profile for any retail display, exhibit, commercial, or residential lighting applications.

The unique feature of 12v Round LED puck light is the interchangeable magnetic trim rings. Available in Black, White, Brushed Nickel, Chrome, or Gold finish options.

Additionally, the LED Puck Light color temperature settings can be easily changed from 3000k (WW), 4000k (NW), to 6000k (CW) by adjusting the built-in switch to the desired setting.

## KEY FEATURES

- Easily select LED color temperature
- Various magnetic trim finish options
- Maintenance-free
- Solid-State Construction
- No IR or UV radiation
- Suitable for flat ceilings, sloped ceiling, or under-cabinet installations
- Easy to mounting and install
- LEDs Chipsets are high intensity, ultra-bright, and energy-efficient
- No RF interference
- Long lifespan: Up to 50,000 hours

## APPLICATIONS

- Decorative Lighting for Tradeshows, Exhibition, Retail Displays
- Architectural lighting for corridors, canopies, archways,
- Downlighting or Uplighting Recessed Applications
- Gallery and Museum Lighting
- Under-cabinet, Under-Counter, or accent lighting

