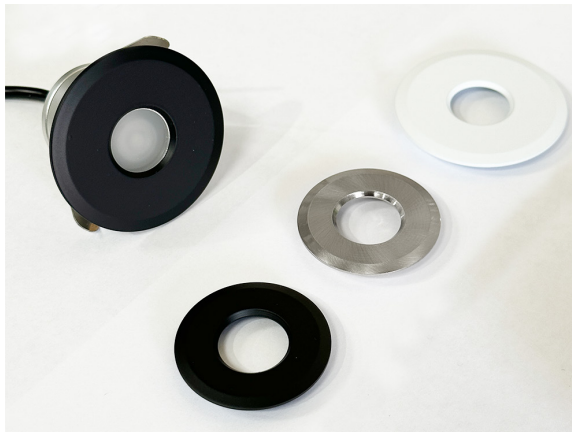


SPECIFICATION SHEET



JOB NAME:

LOCATION:

QUOTE/REF#:

DESCRIPTION

The Trim Changeable LED Downlights are a great choice for any exhibit or display lighting needs. These downlights can be easily changed for a variety of recessed light options, offering reliable illumination and convenient functionality.

Step 1 Dezigns recessed LED downlights are very easy to install. Furthermore, the LED technology eliminates heat from the fixture, and there are no harmful UV or infrared rays to damage artwork or retail displays.

*** Required:** The LED Downlights require 12V DC LED Driver and an RGB controller is required for the RGB downlight. Sold separately.

SPECIFICATIONS

Brightness:	300 Lumens
Power:	3 Watt
Input Voltage:	12V DC
LED Colors:	2700K, 3000K, 6000K, or RGB
IP Rating:	IP65
Environment:	Indoor Use - Dry or Damp Location
Dimmable:	Specified by 12V dimmable driver
Beam Angle:	113°
Cut-out:	1.57 in (40 mm) Diameter
Trim Plate:	1.57 in (40 mm) or 2.05 in (52 mm) Diameter
Depth:	1.38 in (35 mm)
Finish:	Black, White, Brushed Nickel,
Mounting:	Recessed
Manufacturer:	Elumalight
Rating:	UL, ROHS
Avg. Lifetime:	± 30,000 - 50,000 hours

KEY FEATURES

- Changeable faceplate trims
- Easy installation
- Dimmable with dimmable power supply
- No flicker delay or warm-up like compact fluorescent products
- No diode image
- No UV light or infrared wavelengths
- cULus Listed

APPLICATIONS

- Decorative Lighting for Tradeshows, Exhibition, and Retail Displays
- Architectural lighting for corridors, canopies, archways,
- Downlighting or Uplighting Recessed Applications
- Gallery and Museum Lighting
- Under-cabinet, Under-Counter, or accent lighting

