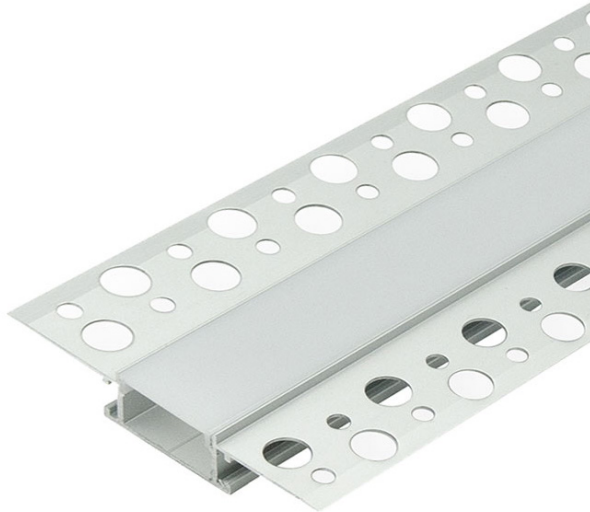


SPECIFICATION SHEET

JOB NAME:

LOCATION:

QUOTE/REF#:



DESCRIPTION

LED Mud-In Recessed Aluminum Channel is designed to be completely trimless once installed into plaster ceilings or walls, with no aluminum frames showing.

KEY FEATURES

- High-quality diffuser, placing/removing from the front on click
- For indoor use only
- Made from anodizing aluminum, UV resistant.
- Rigid and dustproof housing can be surface mounted.
- Includes aluminum channel and opal white lens.
- The Channel lens protects LED strip light from the environment and creates diffused lighting effects. Easy to install, simply clip the diffuser lens into the aluminum channel.
- LED Aluminum Mounting Channels do not qualify for the Free Standard Shipping offer. Additional shipping charges will be billed separately.
- Aluminum channels are not returnable due to the packaging and shipping costs.

SPECIFICATIONS

- Channel Height:** 0.64 in / 16.2 mm thick
- Inside Width:** 0.73 in / 18.48 mm wide
- Outside Width:** 1.09 in / 27.64 mm wide
- Total Width:** 2.66 in / 67.64 mm wide (with flanges)
- Length:** 78 in / 2 meters long
- Lens Finish:** Opal White
- Environment:** Indoor Use - Dry Location
- Channel Finish:** Aluminum
- Manufacturer:** Elumalight

APPLICATIONS

- Trade Show Booth
- Retail Stores
- Heat sink and physical protection to the LEDs
- In Wall Recessed Lighting

Unit: mm

