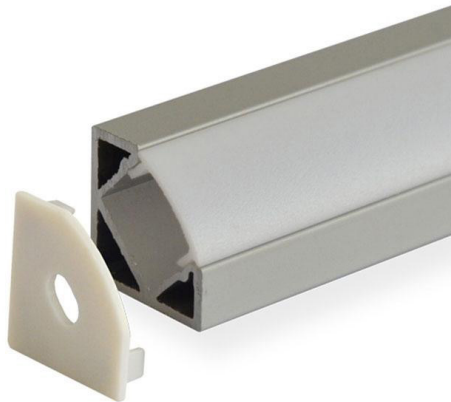


## SPECIFICATION SHEET

JOB NAME: \_\_\_\_\_

LOCATION: \_\_\_\_\_

QUOTE/REF#: \_\_\_\_\_



### DESCRIPTION

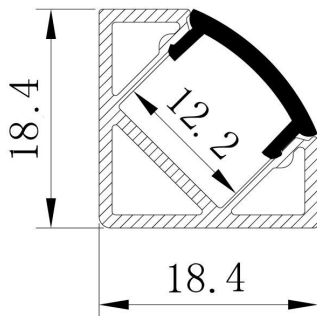
LED Angle 45 Aluminum Channel includes our v-shaped aircraft-grade aluminum channel and compatible frosted or opal white lens. Creating a rigid, modern, and sleek style LED strip light installation has never been easier.

### KEY FEATURES

- It comes in 2-meters sections and can be custom cut to any length.
- 18.4 mm wide by 18.4 mm height.
- Perfect for mounting LED Strip Light up to 12 mm in width.
- V-shaped for angled or corner lighting applications.
- Includes aluminum channel, diffuser, 2 mounting clips, and 2 end caps.
- The Channel lens protects LED strip light from the environment and creates diffused lighting effects. Easy to install, simply clip the diffuser lens into the aluminum channel.
- The rigid and dustproof channel can be mounted onto any flat surface.

### SPECIFICATIONS

**Channel Height:** 0.71 in / 18.4 mm thick  
**Inside Width:** 0.48 in / 12.2 mm wide  
**Outside Width:** 0.71 in / 18.4 mm wide  
**Length:** 78 in / 2 meters long  
**LED Strip Width:** up to 12 mm  
**Lens:** Frosted or Opal White  
**Environment:** Indoor Use, Dry Locations  
**Finish:** Aluminum  
**Manufacturer:** Elumalight



Unit: mm

### APPLICATIONS

- For use with LED Strip lights up to 12 mm in width.

