

SPECIFICATION SHEET

JOB NAME: _____

LOCATION: _____

QUOTE/REF#: _____



SPECIFICATIONS

Brightness:	5000 Lumens
Power:	50 watt
Input Voltage:	120V AC
LED CCT:	5000K Cool White
CRI:	90+
# of LED Chips:	24
Dimmable:	No
IP Rating:	IP20
Environment:	Indoor Use - Dry Location
Beam Angle:	90°
Adj. Head:	Pivots 0-30°, Rotates 359°
Head Length:	8.25 in / 209.55 mm long
Head Width:	5.5 in / 139.7 mm wide
Head Depth:	1.75 in / 44.45 mm thick
Overall Length:	18 in / 457.2 mm long
Finish & SKU:	Black EL-157LED-BK Silver EL-157LED-SL
Included:	1x LED Display Arm Light 1x 44 in. M/F Linkable Cord 1x 8 ft Plug-N-Play Power Cord 1x 3.5 in Mounting Clamp
Mounting:	Various Mounting Options Sold Separately
Manufacturer:	Elumalight
Rating:	ETL Listed
Avg. Lifetime:	± 30,000 - 50,000 hours

DESCRIPTION

Even and smooth lighting solution for trade show booths, exhibits, and displays. Available in Black, or Silver finish options.

Light up your trade show booth or exhibit displays with our Line Voltage High Lumen Output Linkable LED Display Arm Light. You may daisy-chain up to 10 Arm Lights together with supplied male/female plug attached power cords. It is engineered to deliver even wall wash illumination with low heat operating temperature and no hot spots. This industry-leading lighting solution is accepted at all trade show venues.

Having a lightweight construction, versatile mounting options, and an integrated LED driver, it is ready to install to your display unit. Because it is built with superior quality LED chipsets, they will last much longer than traditional halogen display arm light.

KEY FEATURES

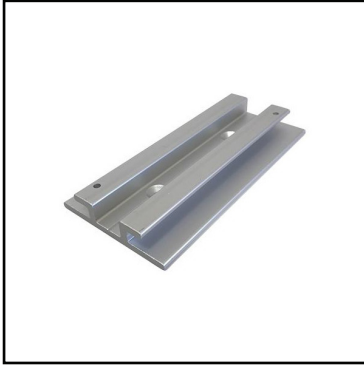
- Link up to 10 EL-157LED Display Arm Lights
- Even illumination of the entire display wall
- High lumen output up to 5000 Lumens and energy efficient
- Integrated LED chipsets
- Adjustable Head allows for the desired lighting direction
- Virtually mounts to any applications with separate mounting accessories
- Plug N Play power cord for easy installation
- No RF interference
- Up to 50,000 hours Lifespan
- ETL Listed

APPLICATIONS

- Tradeshow Booth
- Exhibit and Displays
- Pop-up Displays
- Wall Wash Applications
- Illuminate Graphics and Artworks



SOLD SEPARATELY



SKU: EL-CLP-58
FLAT BAR MOUNT CLIP



SKU: EL-CLP-59
UNIVERSAL
MOUNTING CLIP