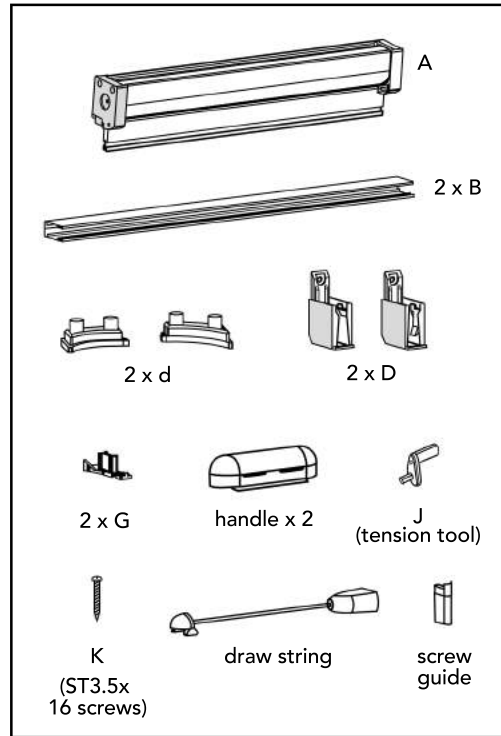
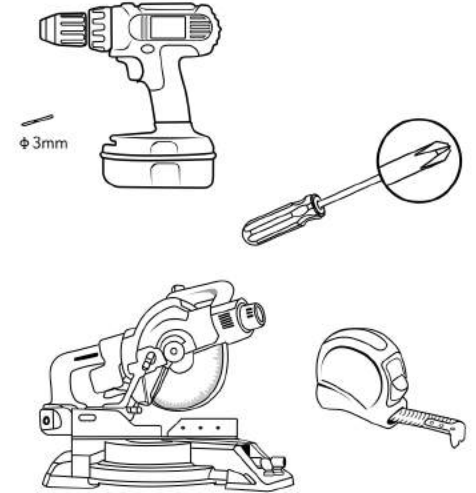


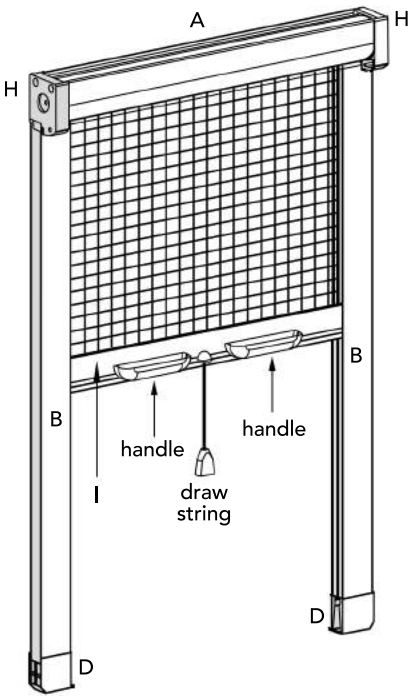
CONTENTS



RECOMMENDED TOOLS



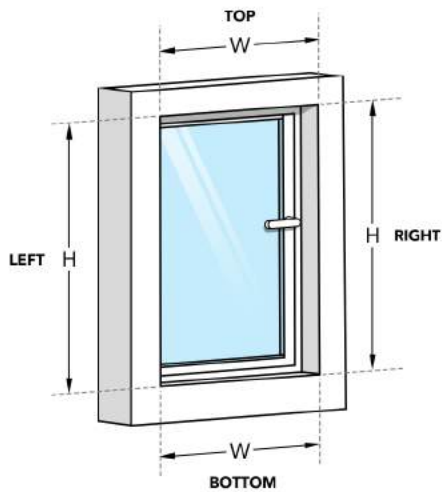
- Use power tools with caution and wear protective equipment.
- Use of drop saw with blade for aluminum cutting is essential.



INSTALLATION

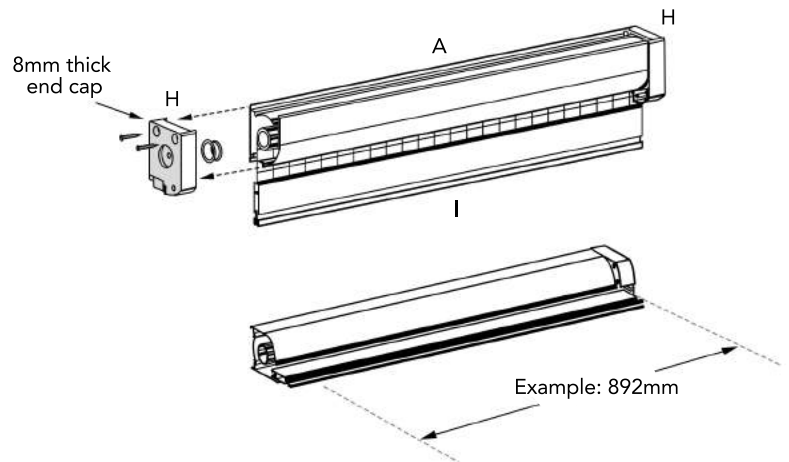
1 WINDOW MEASUREMENTS

Using your tape measure, measure the top, bottom, left and right dimensions of your window as per the directions below.



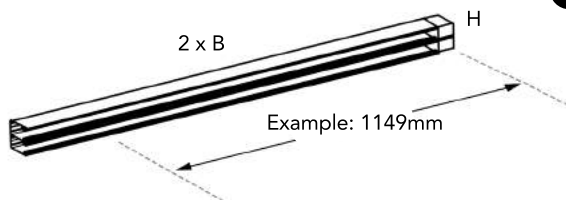
2 DISASSEMBLING CASSETTE

Only on the side with attached measuring tape.



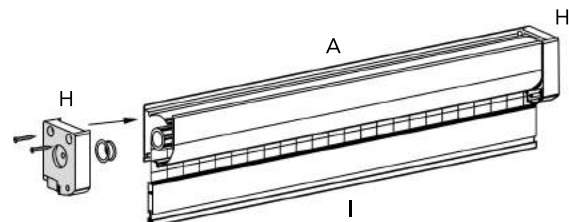
Example:
If width = 900mm, Cassette a = 900mm - 8mm (cap) = 892mm to cut.
Slide handle rail flush with the open end of cassette, then make your cut taking equal amounts off both parts.

3 CUTTING SIDE TRACKS

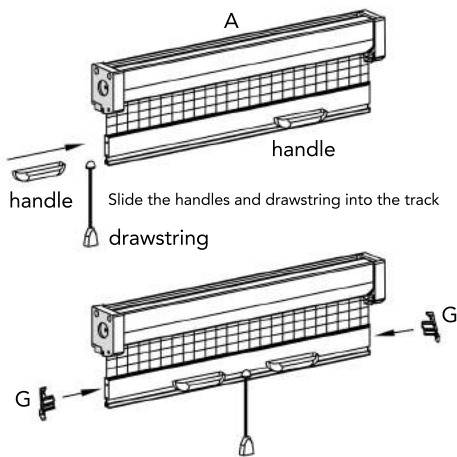


Example: If the desired overall height is 1200mm, cut piece B to 1149mm to account for the end cap.

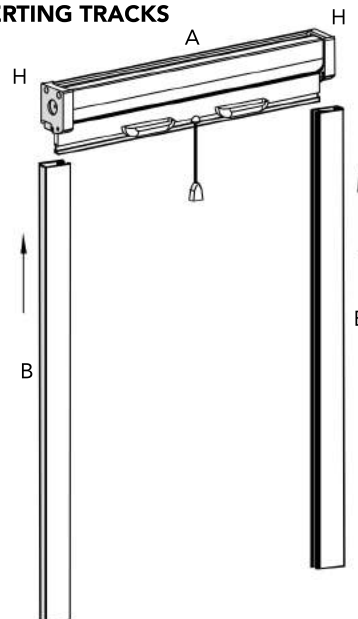
4 ASSEMBLING CASSETTE



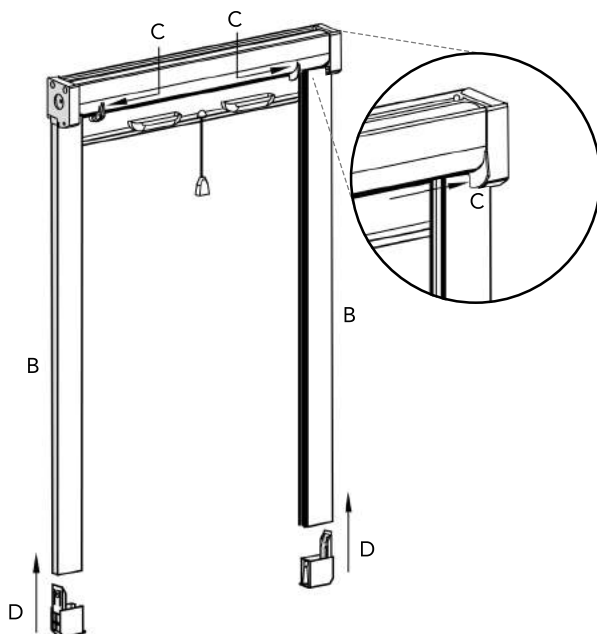
5 FITTING HANDLES



6 INSERTING TRACKS

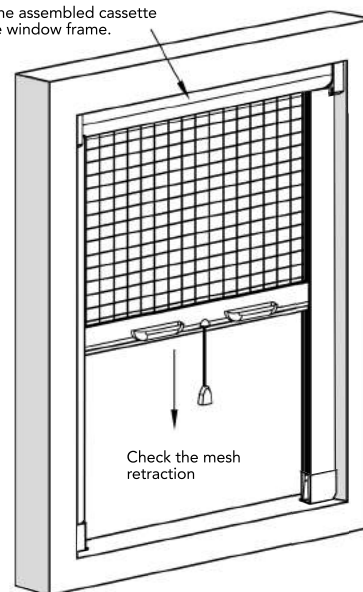


7 FITTING CAPS C and D

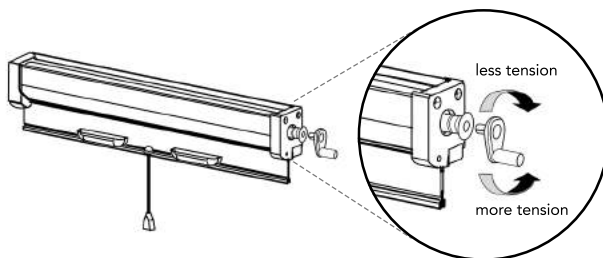


8 FASTENING CASSETTE

Insert the assembled cassette into the window frame.

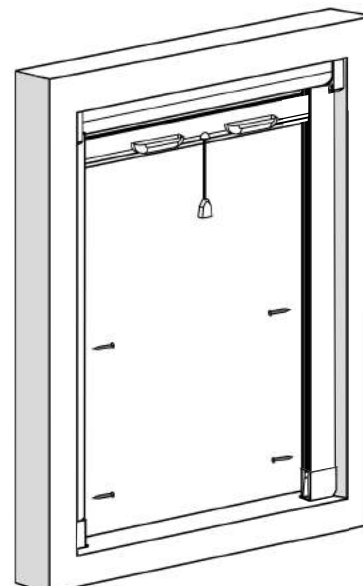


9 ADJUSTING TENSION

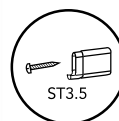


Once installed in the window, test the retraction rate. To change the retraction rate, use the provided tensioner tool and insert it into the hex socket on the end of the cassette. To **increase** the retraction rate, turn the tensioner tool **anti-clockwise** 1 to 4 rotations at a time and re-test. To **decrease** the retraction rate, first turn the tensioner tool anti-clockwise to unlock it. Keeping a firm grip on the cassette and tool, turn the tool **clockwise** 1 to 4 rotations at a time, pushing the socket back into the cassette to lock, being careful not to let the hex socket slip off the tool.

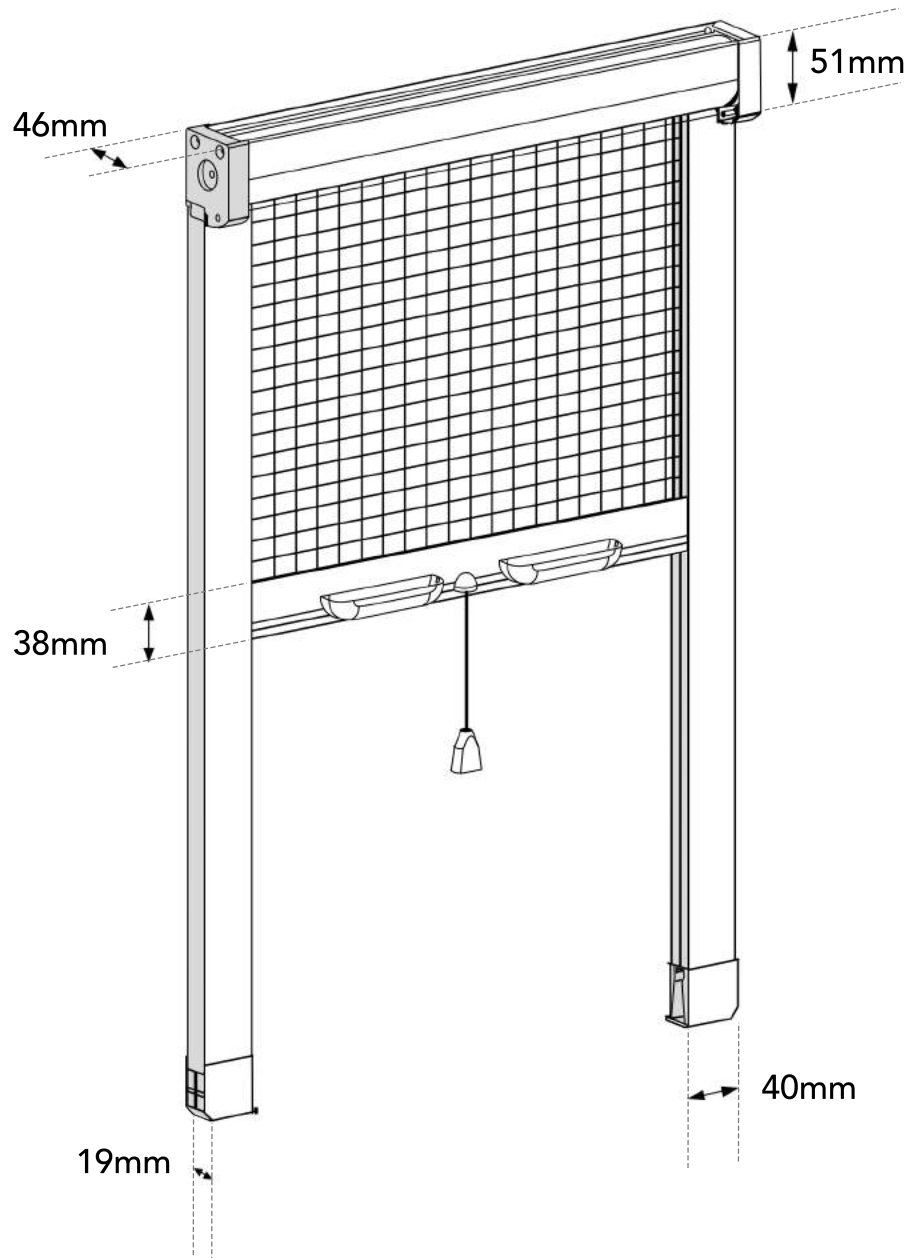
10



Before fastening, pre-drill holes with 3mm drill bit and then screw track and cassette to the frame.



WINDOW SCREEN DIMENSIONS



Please watch EZY Screens installation video on our website:

ezyscreens.com.au