



*keeping your home  
safe and clean*

---

# USERS MANUAL

---

## Industrial Dehumidifier

**Model: ECO D850E MK2 & ECO D950E MK2**



### **Read This Manual**

Inside you will find many helpful hints on how to use and maintain your dehumidifier properly. Just a little preventative care on your part can save you a great deal of time and money over the life of your dehumidifier. You'll find many answers to common problems in the chart of troubleshooting tips. Review the chart of Troubleshooting Tips before calling your service engineers.

**ECOAIR TECHNICAL SUPPORT**  
UK TEL: +44 208 459 2458  
EMAIL: [technical@ecoair.org](mailto:technical@ecoair.org)

|                                     |    |
|-------------------------------------|----|
| IMPORTANT SAFETY INSTRUCTIONS ..... | 1  |
| BS PLUG WIRING .....                | 3  |
| HOW IT WORKS .....                  | 4  |
| POSITIONING THE DEHUMIDIFIER .....  | 5  |
| WALL MOUNTING .....                 | 5  |
| CONTROL .....                       | 6  |
| DRAINAGE .....                      | 7  |
| CLEANING .....                      | 7  |
| TROUBLE SHOOTING .....              | 8  |
| TECHNICAL SPECIFICATION .....       | 8  |
| MOISTURE REMOVAL .....              | 9  |
| WIRING DIAGRAM .....                | 9  |
| SERVICE AND WARRANTY .....          | 10 |

## PLEASE READ ALL INSTRUCTIONS CAREFULLY BEFORE OPERATING.

**WARNING** - This Ecoair Dehumidifier is a large capacity unit designed to run highly efficiently in places such as: jacuzzis, spa rooms, garages, indoor swimming pools, archives, libraries, restaurants bars, stores, boat sheds, weekend cottages etc.

When using electrical appliances, basic safety precautions should always be followed:

1. Do not operate the unit with a damaged cord or plug. If a malfunction occurs or the unit has been dropped or damaged in any way, return to an authorized service facility for examination.
2. This unit should always be kept in an upright position to avoid any damage. The appliance must be placed on a level flat surface during operation.
3. Check the household voltage to ensure it matches the units rated specification before operating.
4. Operate this unit in an ambient temperature between 7°C and 32°C.
5. Ensure that the air inlets and outlets are not blocked or covered.
6. Do not place the unit too close to curtains or other objects - min 40cm.
7. Never place anything on top of the unit and do not cover with any kind of material while in use.
8. To protect against electrical shocks, do not immerse unit, plug or cord in water, or spray with liquids.
9. Never unplug the power cord without press the "ON/OFF" key to off first, as this could damage the unit.
10. Always unplug the unit when not in use or when moving location. To disconnect from the power supply, grip the plug and pull from the power socket. Never pull by the cord.
11. Close supervision is necessary when any appliance is used by or near children and pets.
12. Do not run power cord under carpeting, or cover with rugs or runners. Arrange the cord away from areas where it may be tripped over.
13. Never operate or store the unit in direct sunlight.
14. To repair the unit, take it to a qualified service engineer. Repairs carried out by unqualified people may cause damage to the unit or injury to persons or property and void the warranty.
15. Where possible, avoid the use of an extension cable as they may overheat and cause a risk of fire.
16. Do not use the unit without the air filter.
17. Clean your filter every week to keep your air clean and prolong the life of your dehumidifier.
18. Do not use the unit in a very dusty environment.
19. Continuous drainage, the hose should be angled downwards for gravity drainage.
20. This appliance is not intended for use by persons (including children) with reduced physical, sensory, or mental capabilities, unless they are supervised by a responsible adult.
21. Do not insert any object into the opening of the dehumidifier.
22. Never connect to an electrical outlet using an extension cord. If an outlet is not available, one should be installed by a qualified electrician.
23. Any service other than regular cleaning or filter replacement should be performed by an authorized service representative. Failure to do so could result in a loss of warranty. This appliance is supplied with an electrical cable and an earthed plug. Should it be necessary to replace this plug at any time, you must use an earthed electrical plug.

# IMPORTANT SAFETY INSTRUCTIONS

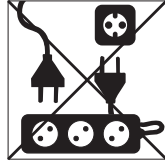
Do not use your dehumidifier under the following conditions:



If the power cable wires are frayed or cut



Where the power cable may be damaged



If an extension cord is needed to reach an outlet



Close to a heat source



When small children may be left unattended



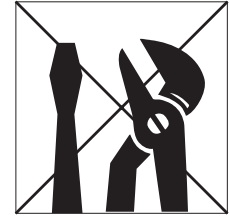
If there is a risk of liquid falling on the unit



Where it may be damaged by chemicals



Where there is a risk of interference by foreign objects



This product is not made for DIY repair

**Wiring Instructions:** Should it be necessary to change the plug please note the wires in the mains lead are coloured in accordance with the following code:

**BLUE - NEUTRAL**  
**BROWN - LIVE**  
**GREEN AND YELLOW - EARTH**

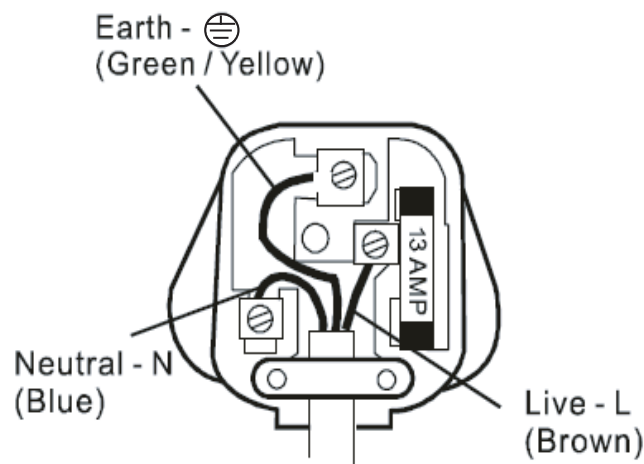
As the colours of the wires in the mains lead of this appliance may not correspond with the coloured markings identifying the terminals in your plug, proceed as follows:

1. The **BLUE** wire is the **NEUTRAL** and must be connected to the terminal which is marked with the letter **N** or coloured **BLACK**.
2. The **BROWN** wire is the **LIVE** and must be connected to the terminal which is marked with the letter **L** or coloured **RED**.
3. The **GREEN/YELLOW** is the **EARTH** and must be connected to the terminal which is marked with the letter **E** or  $\oplus$  or coloured **GREEN OR GREEN/YELLOW**.
4. Always ensure that the cord grip is positioned and fastened correctly.

If a **13A (BS 1363)** fused plug is used it must be fitted with a **13A** fuse. If in doubt consult a qualified electrician.

### **Wiring for a 13 Amp Plug (BS1363)**

Please note. The Earth Terminal is marked with the letter **E** or  $\oplus$  Earth Symbol.



# HOW IT WORKS

Your Eco Air dehumidifier controls the Relative Humidity by passing the air through the unit forcing the excess moisture to condensate over the cooling elements.

This condensate water then flows safely into a fixed drain.

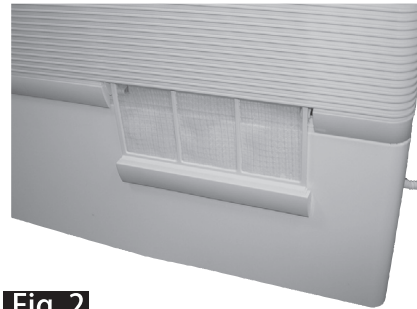
The dried air then passes through a final heat exchanger where it is slightly warmed and re-enters the area at a slightly elevated temperature.

The level of dehumidification depends on the humidity setting on the unit and the relative humidity level (RH).

## PARTS

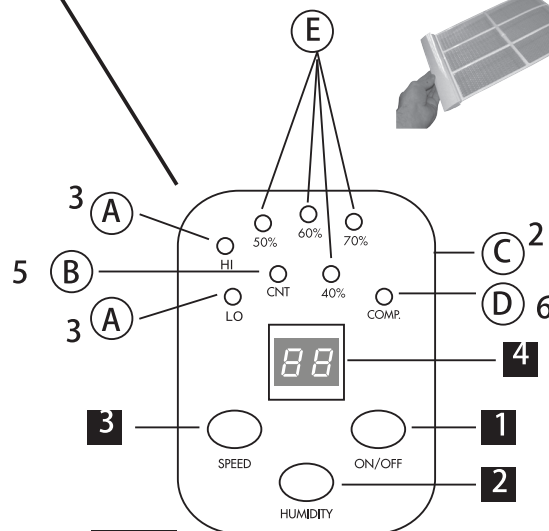


**Fig. 1**



**Fig. 2**

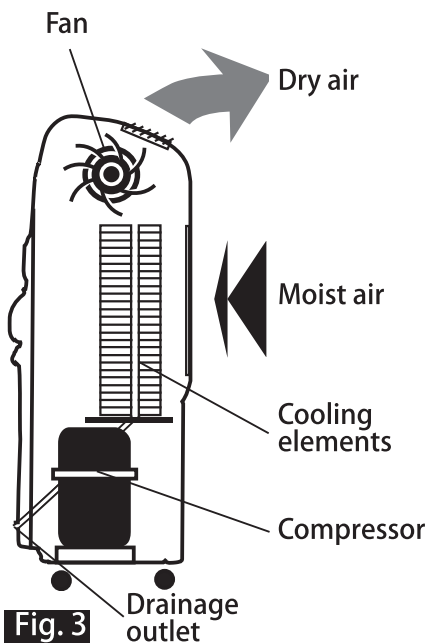
**4**  
Filter



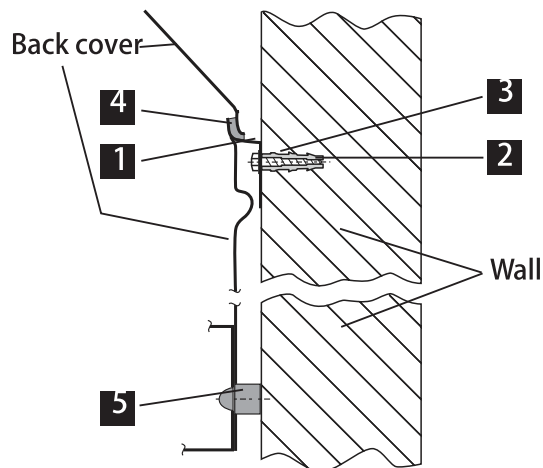
**Fig. 4**

- 1. ON / OFF button
- 2. Humidity Setting button
- 3. Fan Speed button
- 4. Display

- A. Fan Speed Indicator
- B. Continuous Run Indicator
- C. Control Panel
- D. Compressor On Indicator
- E. Humidity Setting Level Indicator



**Fig. 3**



**Fig. 5**

- 1) Rear panel tongues
- 2) Hole on the wall
- 3) Wall plug and screw
- 4) Wall bracket
- 5) Rubber plug (bung)

## POSITIONING THE DEHUMIDIFIER

When positioning the unit, ensure that it is placed on a flat level surface on the floor or wall and there must be free space of at least 30cm on top the unit and front of the unit.

Your EcoAir dehumidifier can be installed in any area such as a cellar, garage, bar, shed, archive or swimming pool.

Best results are obtained when windows and doors are closed, thus preventing moisture getting in.

Follow the local electrical regulation for installation

When the dehumidifier is in operation, open outside doors and windows only when necessary.

## WALL MOUNTING

See page 4, fig. 5

When positioning the unit, ensure that it is placed on a flat level surface on the floor or wall and there must be free space of at least 30cm above and in front of the unit. All necessary items for wall mounting are supplied in the plastic bag.

- Fix the supporting bracket with at least 5 screws horizontally to the wall, using the wall plugs supplied for a stronger installation.
- Hang the unit on the bracket (4), make sure the two tongues (1) on the rear of the unit fit correctly over the two tongues, on the bracket.
- Make sure the 2 rubber bungs (5) on the lower part of the rear panel are placed correctly.

## CONTROLS

See page 4, fig. 4

### ON/OFF (1)

The unit is switched on and off by pressing the ON/OFF button (1).

### Humidity (2)

Press the HUMIDITY button (2) repeatedly to select the desired humidity level. When you select continuous function the CNT light (B) will stay on, regardless of the relative humidity level in the area.

### Fan speed (3)

Press the SPEED button (3) to select low or high speed. The Fan Speed Indicator (A) will indicate this, 1=low or 2=high.

### Digital display (4)

The digital display (4) will show the measured relative humidity in the area.

### Compressor (D)

The COMP control light (D) will be on when the compressor is running. To safeguard the compressor there is a three minute automatic time delay before the compressor will turn itself on, this is normal.

### Notes

This dehumidifier should not be used in temperatures below 7° C or above 32° C.

### Defrost Control

The dehumidifier is equipped with an automatic de-icing mode to defrost the coil during low temperature operation. The compressor is switched off whilst the fan continues to run.



## DRAINAGE

There are four optional outlets for the drainage tube. To change the outlet of the drainage tube the rear panel should be removed.

When replacing the rear panel care should be taken to return all the screws and washers to their original locations.

### Connecting the permanent outlet

- Connect the pipe to an outlet tube with the correct diameter.
- Push the other end of the tube into a drain, making sure that the tubing is not twisted or folded.
- The entire length of the tube should be angled downwards for gravity drainage.
- Ensure that the outlet of the drainage pipe is not under the water level in the drain.

NOTE: In very cold weather conditions precautions should be taken to prevent the drainage pipe from freezing.

## CLEANING

Disconnect from the mains before cleaning the unit or any of its components.

See page 4, fig. 2

### Cleaning the air filter

Air circulation is impeded and the efficiency of the dehumidifying and air purifying functions decrease when the filter is dirty. It is therefore good practice to clean the filter at regular intervals. The precise intervals depend on the room in which the appliance operates and on how frequently it is used.

- Remove the filter (4) by sliding it out.
- Clean the filter or wash in tap water.
- Dry the filter before inserting it back.

### Housing

Clean the casing regularly with a moist cloth and mild household detergent.

### Servicing

Have your dehumidifier serviced once a year by a qualified engineer

## TROUBLE SHOOTING

If the dehumidifier does not operate:

- Make sure the unit is plugged in.
- Ensure the humidistat control is turned on.

If the unit is noisy:

- Make sure the dehumidifier is standing solidly and level.

If the unit is leaking:

- Check the drainage tube for correct fitting.
- Check for twists and bends in the drainage tube.
- Check the drainage tube for a sufficient slope.
- Check and make sure that the outlet of the drainage pipe is not under the water level in the drain.

## TECHNICAL SPECIFICATION

| MODEL                               |                   | ECO D850E MK2                                   | ECO D950E MK2 |
|-------------------------------------|-------------------|---|---------------|
| Mains                               |                   | 220-240 V~50 Hz                                 |               |
| Rated Power Input                   | W                 | 843   | 1249.5        |
| Current (Operation)                 | A                 | 4.15  | 6.5           |
| Current (At Start)                  | A                 | 20  | 22            |
| Water extraction at 30 ° C, 80 % RH | L/24h             | 60  | 76            |
| Sound Pressure                      | dB(A)             | 55  |               |
| Sound Power                         | dB(A)             | 63  |               |
| Refrigerating agent *               |                   | R410/540g                                       | R410/700g     |
| Airflow (at high fan speed)         | m <sup>3</sup> /h | 390   | 370           |
| Operating temperature               | ° C               | 7 – 32  |               |
| Dimensions (w x h x d)              | mm                | 660 x 720 x 345                                 |               |
| Weight (Net)                        | kg                | 37  | 39            |
| Meets EEC directive 73/23/CE (LVD). |                   | Specifications may change without prior notice. |               |

\* Containes fluorinated greenhouse gases covered by Kyoto Protocol (R410A)



You must not dispose of this appliance as unsorted waste or with your domestic household waste.

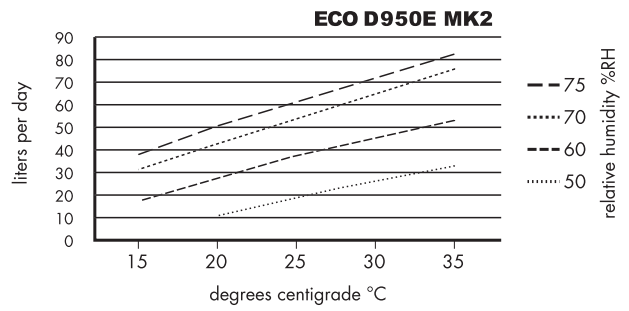
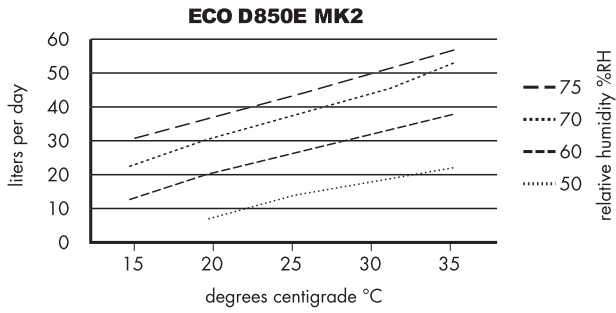
Please observe local regulations for disposal.



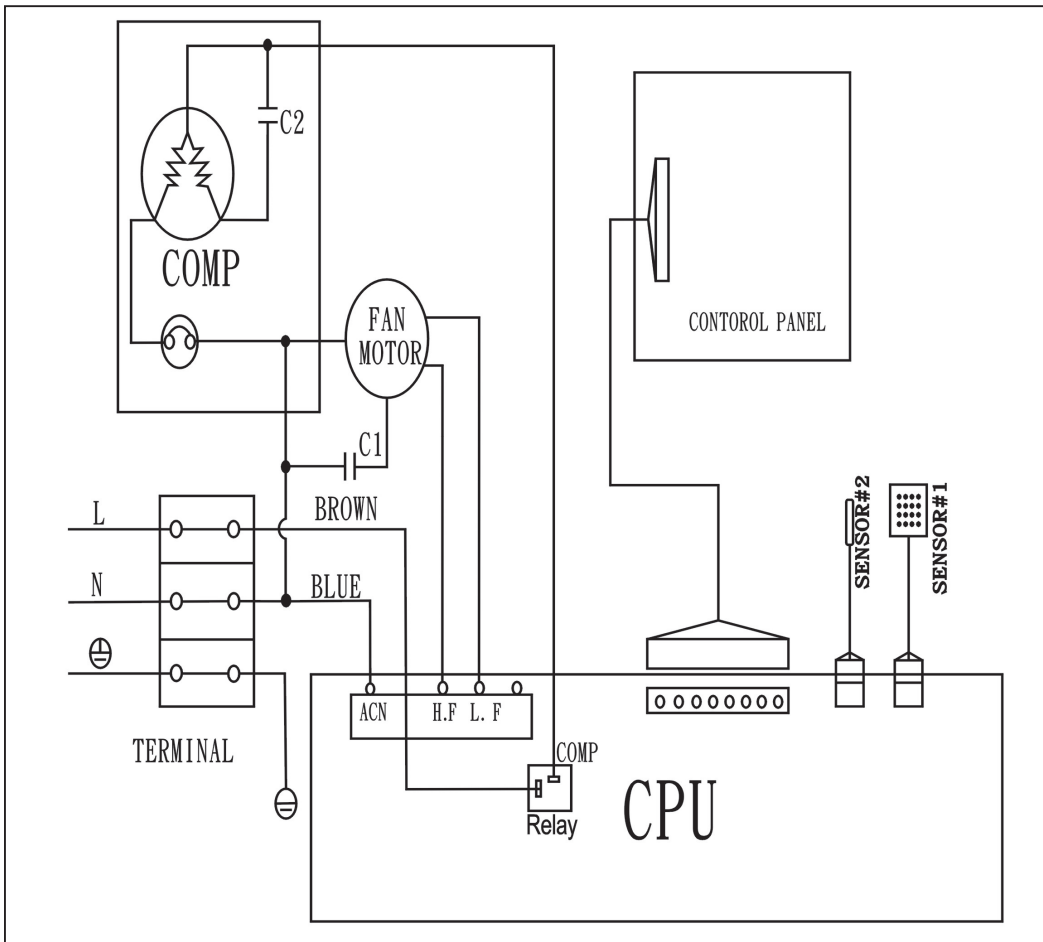
Most Local authorities have specific collection systems for appliances where disposal is free of charge to the end user.

# MOISTURE REMOVAL

For reference purposes only



# WIRING DIAGRAM



## ONE (1) YEAR LIMITED WARRANTY Save This Warranty Information

**Eco Air** guarantees this product free from defects in materials and workmanship for a period of one (1) year from the date of purchase. Coverage is valid only with proof of purchase.

This unit must be operated under conditions as recommended, within the voltage range indicated on the unit. Any attempts made to service or modify the unit, will render this **WARRANTY VOID**. The actual product may differ slightly from the illustration. This warranty is in addition to, and does not affect, your statutory rights.

If the unit is modified or mis-used, this could void the warranty.

For further information, please contact 020 8459 2458.

This product has been manufactured to comply with the EC Directives 2006/95/EC and 2004/108/EC.

We recommend that you note the details of your purchase below and retain your original proof of purchase / receipt with this manual. Keep these documents safe in the event of a warranty claim.

Date of purchase: \_\_\_\_\_  
Retailer name: \_\_\_\_\_  
Serial number: \_\_\_\_\_



*keeping your home  
safe and clean*



Copyright Reserved

C127