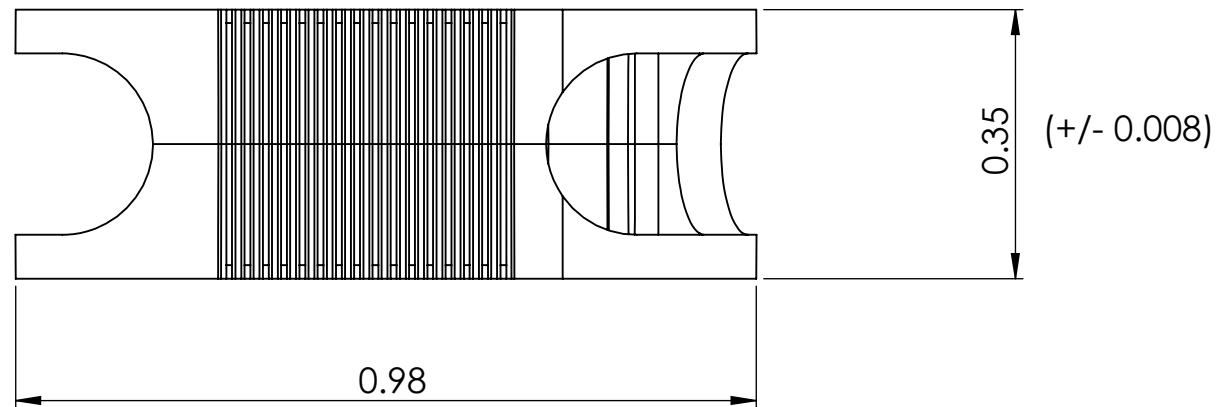
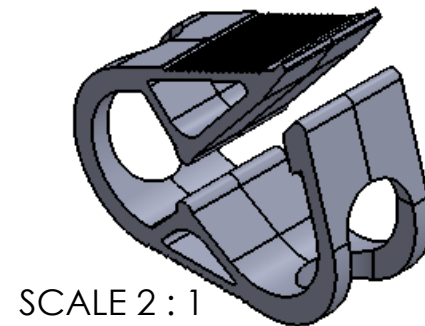


SCALE 4 : 1



SCALE 4 : 1



SCALE 2 : 1

NOTES:

1. MATERIAL: POLYPROPYLENE, PURELL (FORMERLY KNOWN AS MOLPEN) HP371P.  
COLORANT: (BLUE) PE/S 61050/AT
2. VENDOR SHALL CERTIFY FOR EACH SHIPMENT THAT:  
A) EACH SHIPMENT IS TRACEABLE TO VENDOR'S LOTS AND VENDOR'S SUPPLIERS(S) LOTS.
3. MATERIAL MUST BE COMPATIBLE WITH ETO, GAMMA AND STEAM STERILIZATION.
4. FLASH:  
CONNECTING AREAS/ FLUID PATH NOT TO EXCEED .008"  
EXTERNAL FLASH NOT TO EXCEED .020"
- GATE VESTIGE:  
NOT TO EXCEED TO 0.020"
- EMBEDDED MATERIAL:  
NOT MORE THAN 0.4 MM<sup>2</sup> FOR 1 SPOT  
NOT MORE THAN 0.2 MM<sup>2</sup> FOR 2 OR MORE SPOTS.
- PARTICULATE:  
NONE ALLOWED
5. ALL DIMENSIONS ARE FOR REFERENCE ONLY UNLESS OTHERWISE SPECIFIED.
6. CLAMP MUST LOCK INTO POSITION WHEN CLAMPING STANDARD IV TUBE.
7. BULK PACKAGE USING DOUBLE POLY BAGS.
8. PRESSURE/ LEAK TEST: MEETS ISO 8536-4 STANDARD (SECTION A2).

REV	DESCRIPTION	DRAWN	DATE	APP'D	DATE
C	DIMENSION, SPEC CLEAN UP. NOTES EDITED	YN	11-4-14	SP	11-5-14
B	CHANGE MATERIAL TRADE NAME FROM MOLPEN TO PURELL	RM	5-30-08	AL	7-31-08
A	INITIAL DESIGN	APL	9-12-01	APL	9-12-01

REVISION HISTORY					
DRAWING SPECIFICATIONS: UNLESS OTHERWISE NOTED			THIS DRAWING IS PROPRIETARY OF VITALMED, INC. REPRODUCTION OR USE WITHOUT WRITTEN AUTHORIZATION IS PROHIBITED.		
DIMENSIONS ARE IN INCHES BREAK ALL SHARP EDGES CORNER RADIUS = .010/.020 SURFACE FINISH = 32 RMS TOLERANCES: ANGLES = 1/2 DEGREE X.XX = .010 X.XXX = .005			<b>VITALMED, INC.</b>		
			VITALMED, INCORPORATED LAKEVILLE, MASSACHUSETTS 02347		
DESCRIPTION SMALL RATCHET CLAMP, BLUE FOR TUBING					
MATERIAL	SEE NOTES		SCALE	NONE	DWG NO
FINISH	NONE		SHEET	1 OF 1	C044808302
DRAWN	AL	DATE	9-12-01	CHKD	APL
		DATE	9-12-01	APVD	APL
		DATE	9-12-01	REV	C