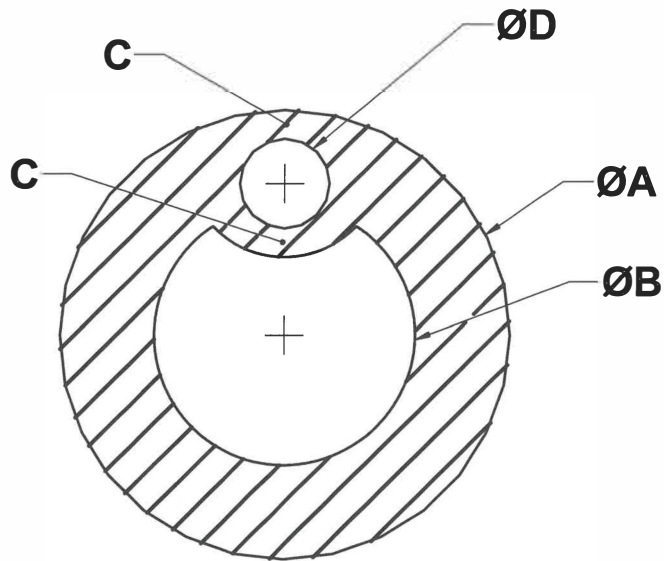


12 11 10 9 8 7 6 5 4 3 2 1



- NOTES:
 1. MATERIAL: 70 DURO SILICONE
 2. COLOR: TRANSLUCENT BLUE
 3. CUT LENGTH 8.75" ±.125"

REVISIONS				
CHANGE #	REV	DESCRIPTION	ISSUE DATE	APPROVED DATE
C20-068	A	INITIAL RELEASE	<i>[Signature]</i> 15 June 2020	<i>[Signature]</i> 6-8 2020



P/N EXTENSION	ØA ±.006	ØB ±.006	C MIN.	D ±.005	PIN	DIE
-012	.163	.085	.015	.035	B3	3
-014	.189	.105	.015	.035	B4	4
-016	.216	.120	.015	.035	B5	5
-018	.242	.137	.015	.047	B6	6
-020	.268	.152	.015	.042	B7	7
-022	.294	.168	.015	.045	B8	8
-024	.320	.190	.015	.045	B9	9
.026	.347	.215	.015	.045	B10	10
.028	.373	.267	.015	.047	B14	9D

ALL DIMENSIONS IN INCHES

APPROVAL: C. TOMLINSON	UNITS: INCHES	
DRAWN BY: C. TOMLINSON	DATE: 5/20/2020	
CUSTOMER NAME: XMD	MATERIAL: SILICONE	Ph: 520-882-7794 4700 S. Overland Drive, Tucson, AZ 85714
THIRD ANGLE PROJECTION 	TOLERANCES UNLESS OTHERWISE SPECIFIED INCHES X ±.03 XX ±.01 XXX ±.005 FRACTIONS ±1/32	TITLE: 70 DURO BI-LUMEN TUBING
ANGLES ±1°		DRAWING NO. 40-0012-XXX
		SCALE: NTS
		REV. A
		SHEET 1 OF 1

12 11 10 9 8 7 6 5 4 3