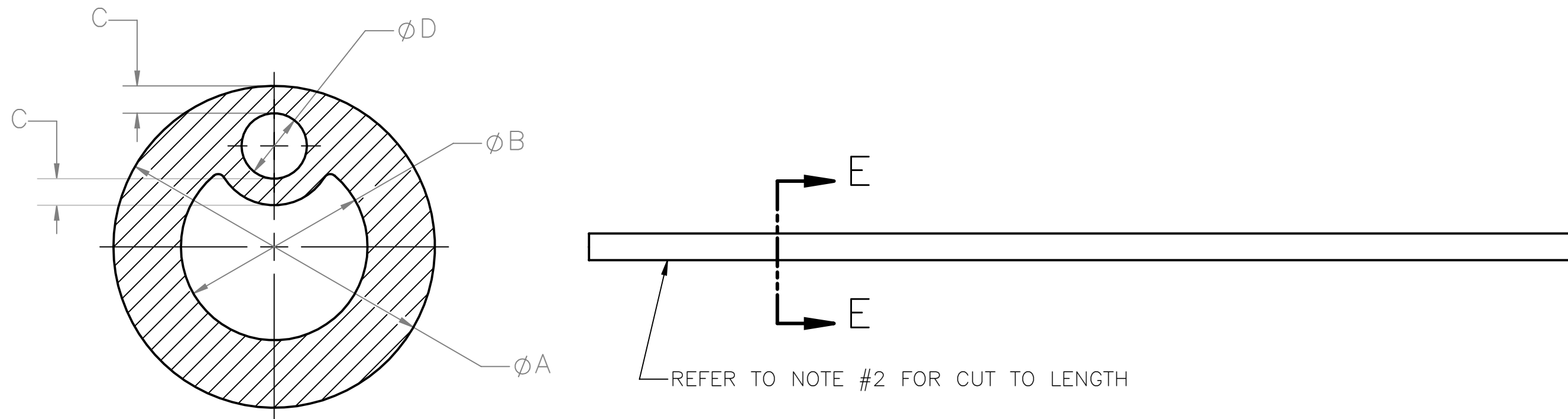


12 11 10 9 8 7 6 5 4 3 2 1


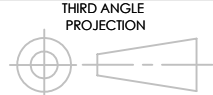
- NOTES;
1. SHAFT DIAMETER TO CONFORM TO LABELED FRENCH SIZE + ONE FRENCH SIZE (-) MINUS ZERO.
 2. SHAFT LENGTH TO BE CUT TO 8 3/4" ±1/8" TOLERANCE.
 3. BI-FUNNEL OVERMOLDED ONTO SHAFT TO YIELD FINAL COMPONENT AS SEEN ON SHEET 2.
 4. SHAFT MATERIAL IS P/N: 35-0041 (TRANSPARENT 70 DURO SILICONE). FUNNEL MATERIAL IS P/N: 20-0118 (TRANSPARENT 60 DURO SILICONE).

REVISIONS				
DCR	REV	DESCRIPTION	ISSUE DATE	APPROVED DATE
N/A	N/A	CHAMFR COMPONENT	N/A	N/A

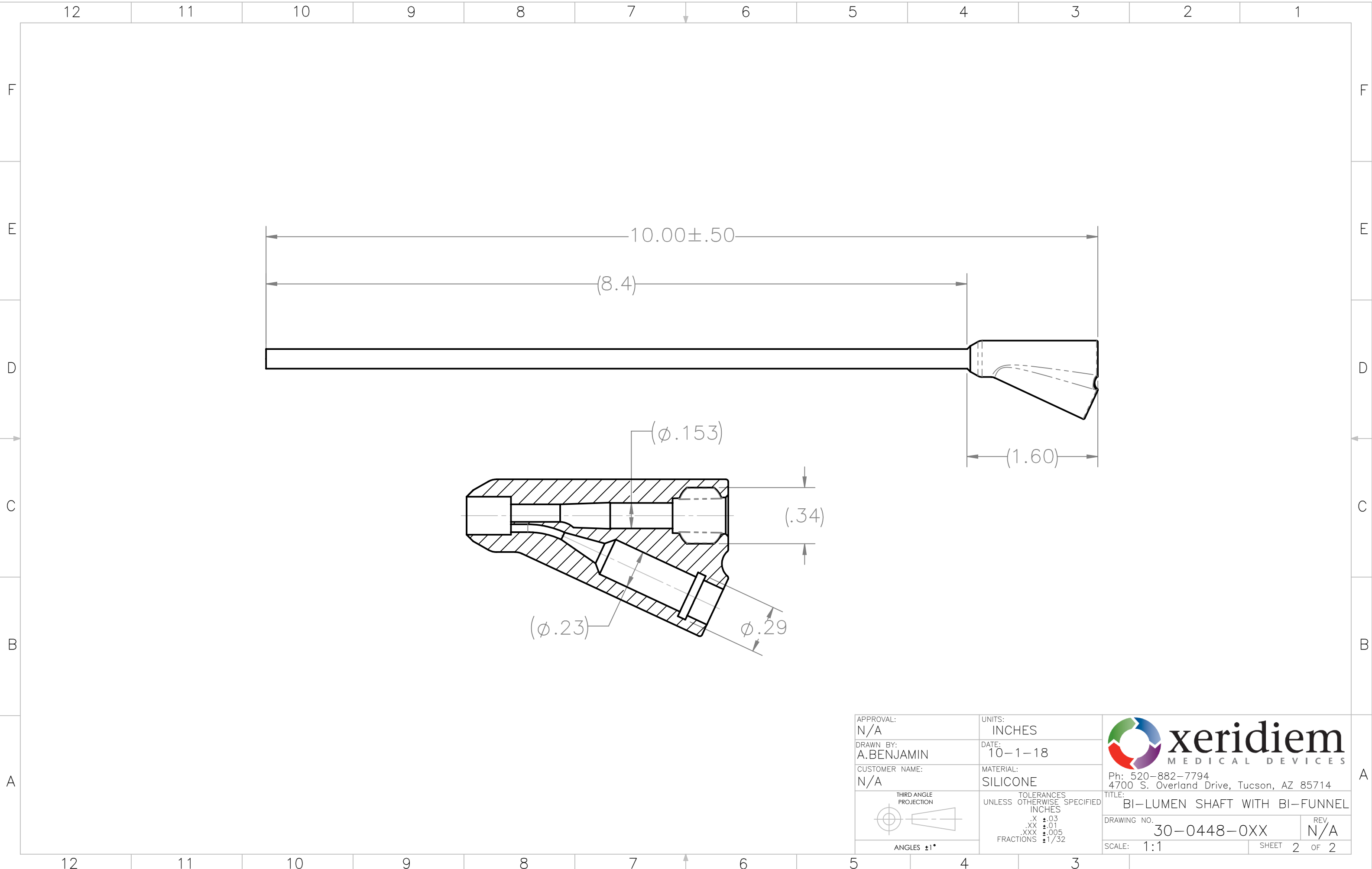


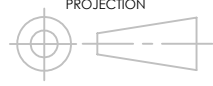
SECTION E-E
SCALE: 12 : 1


PART NO	FR SIZE	A +.013 -.000	B ±.010	C MIN.	D ±.005	PIN #	DIE #	IMPROVED DIE #
-X12	12	.157	.085	.015	.035	B3	3	D12-1
-X14	14	.183	.105	.015	.035	B4	4	D14-1
-X16	16	.210	.120	.015	.035	B5	5	D16-1
-X18	18	.236	.137	.015	.047	B6	6	D18-1
-X20	20	.262	.152	.015	.042	B7	7	D20-1
-X22	22	.288	.168	.015	.045	B8	8	D22-1
-X24	24	.314	.190	.015	.045	B9	9	D24-1

APPROVAL: N/A	UNITS: INCHES	
DRAWN BY: A.BENJAMIN	DATE: 10-1-18	
CUSTOMER NAME: N/A	MATERIAL: SILICONE	Ph: 520-882-7794 4700 S. Overland Drive, Tucson, AZ 85714
	TOLERANCES UNLESS OTHERWISE SPECIFIED INCHES .X ±.03 .XX ±.01 .XXX ±.005 FRACTIONS ±1/32	TITLE: BI-LUMEN SHAFT WITH BI-FUNNEL
ANGLES ±1°	DRAWING NO. 30-0448-0XX	REV. N/A
	SCALE: 1:1	SHEET 1 OF 2

12 11 10 9 8 7 6 5 4 3 2 1



APPROVAL: N/A	UNITS: INCHES
DRAWN BY: A.BENJAMIN	DATE: 10-1-18
CUSTOMER NAME: N/A	MATERIAL: SILICONE
THIRD ANGLE PROJECTION 	TOLERANCES UNLESS OTHERWISE SPECIFIED INCHES .X ±.03 .XX ±.01 .XXX ±.005 FRACTIONS ±1/32
ANGLES ±1°	


xeridien
 MEDICAL DEVICES
 Ph: 520-882-7794
 4700 S. Overland Drive, Tucson, AZ 85714

TITLE:
BI-LUMEN SHAFT WITH BI-FUNNEL

DRAWING NO. 30-0448-0XX	REV. N/A
SCALE: 1:1	SHEET 2 OF 2