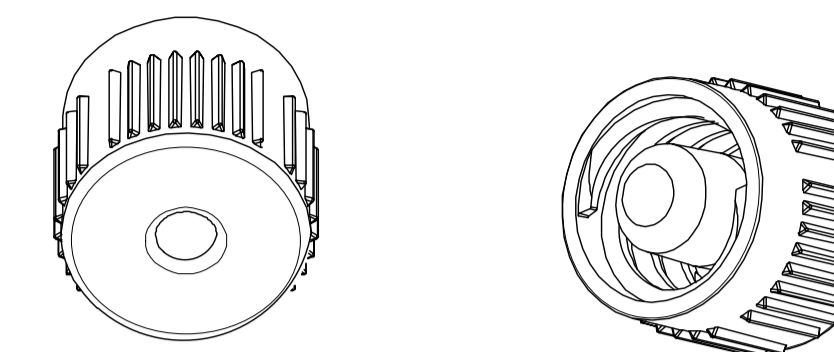
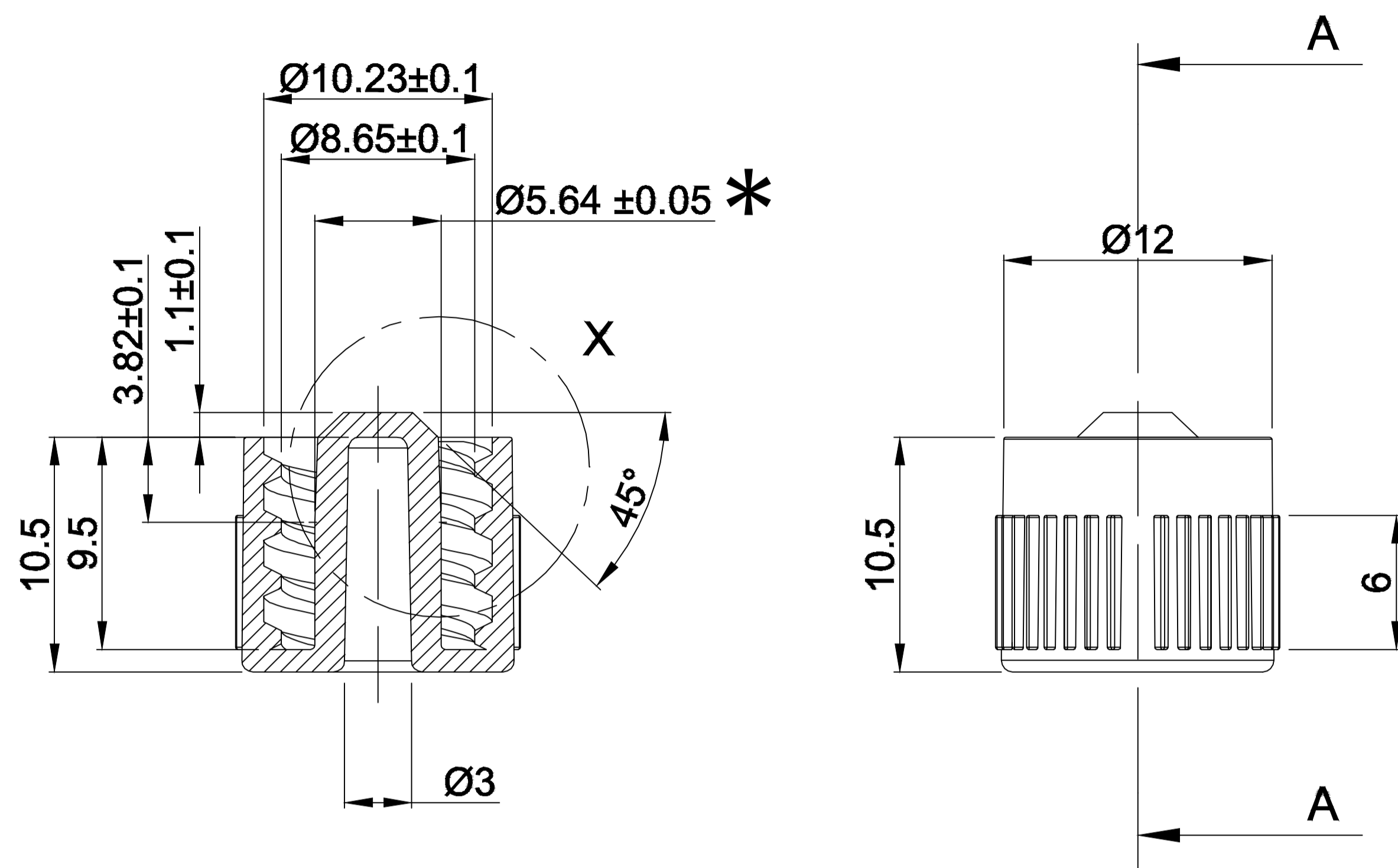
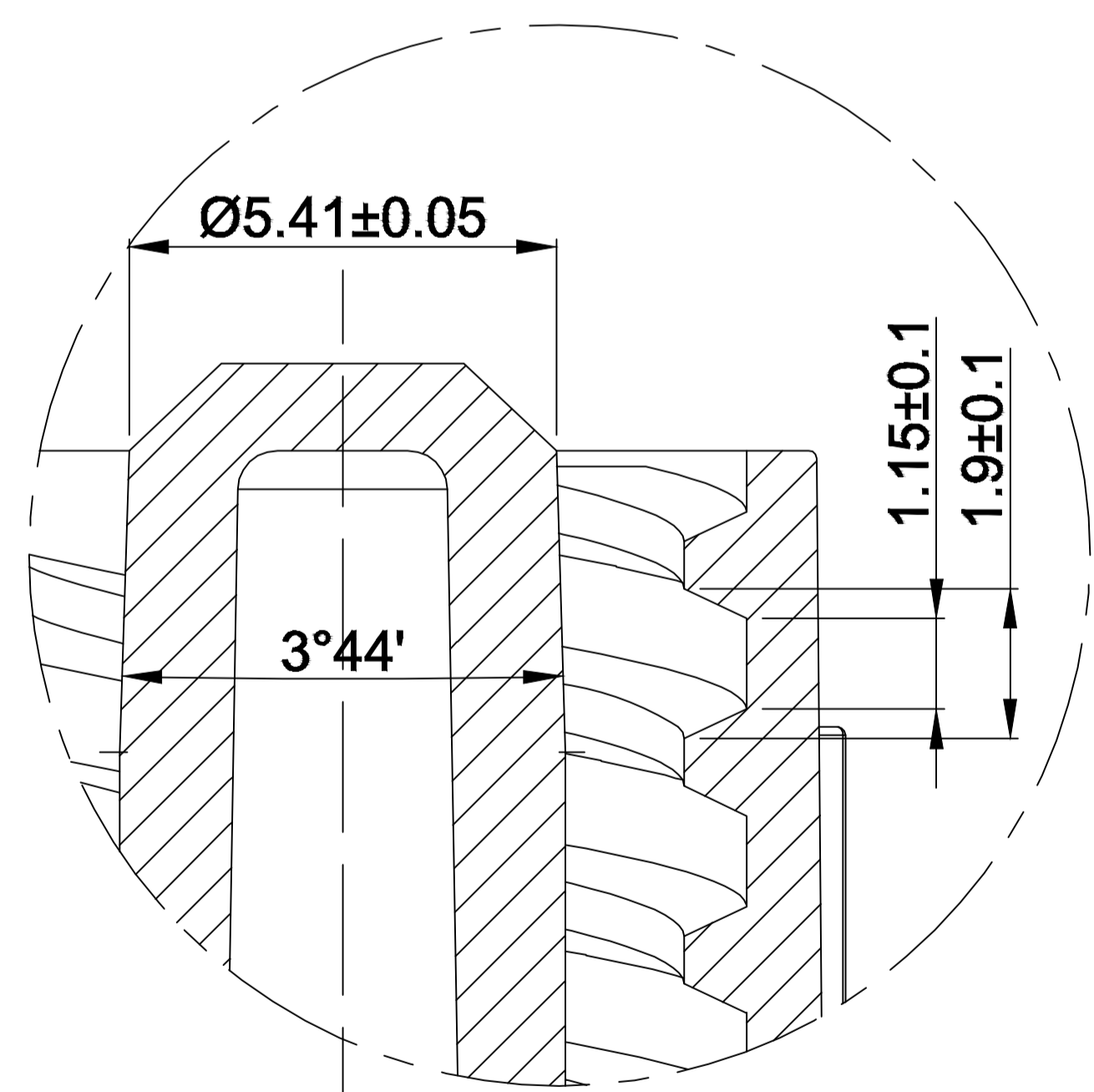
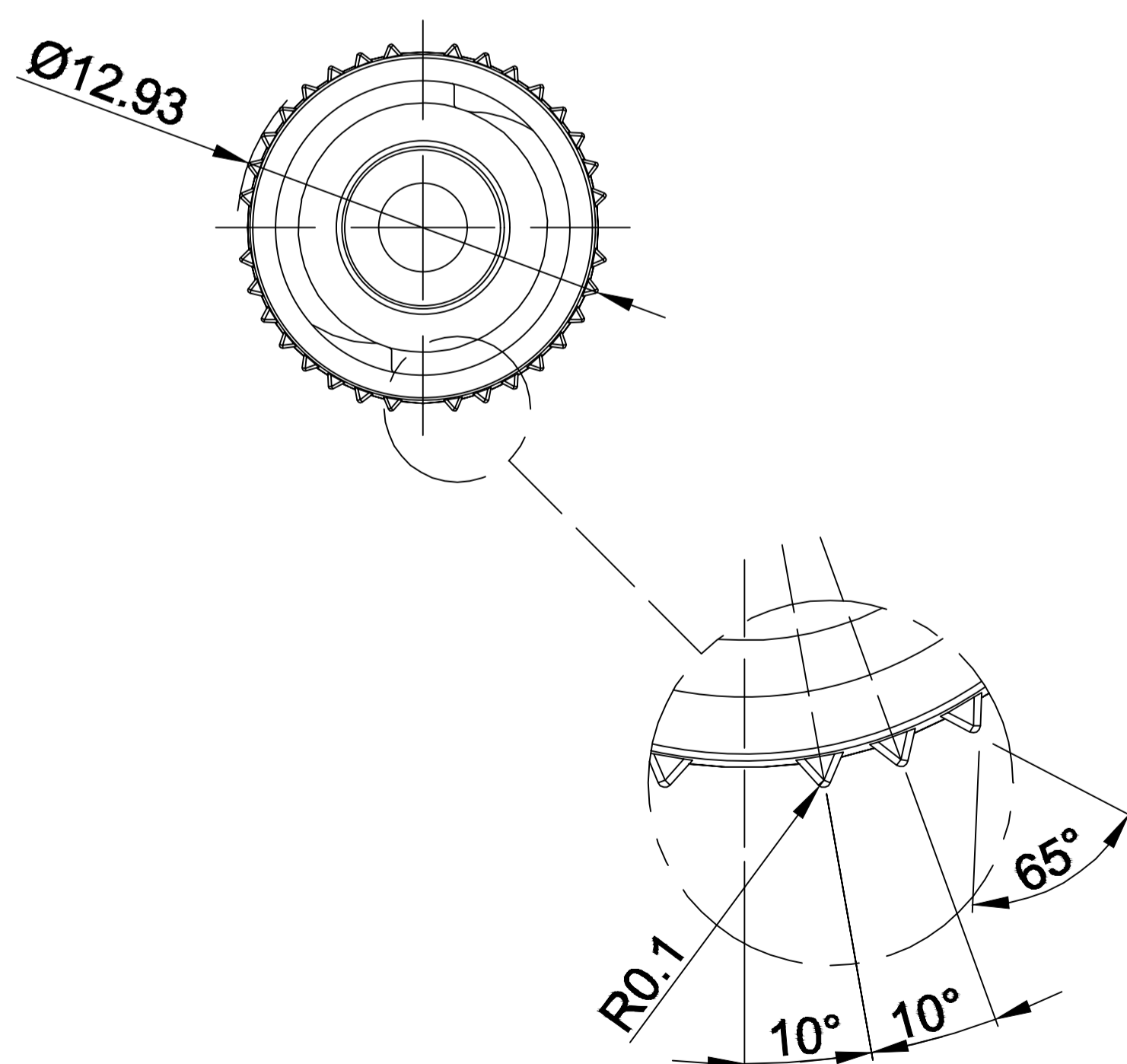


SECTION A - A



NOTES:

1. MATERIAL: ABS, TERLUX 2802 HD
COLORANT, WHITE 10040.
2. PART CONFORMS TO ISO 80369-3.
3. VENDOR SHALL CERTIFY FOR EACH SHIPMENT THAT EACH SHIPMENT IS TRACEABLE TO VENDOR'S LOTS AND VENDOR'S SUPPLIER(S) LOTS.
4. MATERIAL MUST BE COMPATIBLE WITH GAMMA AND ETO STERILIZATION.
5. PACKAGED: BULK, NON-STERILE, DOUBLE POLY BAGS.
6. ALL DIMENSIONS ARE FOR REFERENCE ONLY UNLESS OTHERWISE SPECIFIED. * DESIGNATES INSPECTION DIMENSION.



DETAIL X

REV	DESCRIPTION	DRAWN	DATE	CHKD	DATE	APP'D	DATE
A	INITIAL RELEASE.	LM	27/DEC/19	EF	06/JAN/20	AM	07/JAN/20
REVISION HISTORY							
DRAWING SPECIFICATIONS: UNLESS OTHERWISE NOTED				THIS DRAWING IS PROPRIETARY OF VITALMED, INC. REPRODUCTION OR USE WITHOUT WRITTEN AUTHORIZATION IS PROHIBITED.			
DIMENSIONS ARE IN MILLIMETERS BREAK ALL SHARP EDGES CORNER RADIUS = N/A SURFACE FINISH = N/A TOLERANCES: Js14				VITALMED, INC.			
				DESCRIPTION: ENFIT CAP, MALE			
MATERIAL:	SEE NOTES	DRAWING TEMPLATE:	SCALE:	NONE	DWG NO:	21871	
FINISH:	NONE	F088 REV 0	SHEET:	1 OF 1	REV:	A	