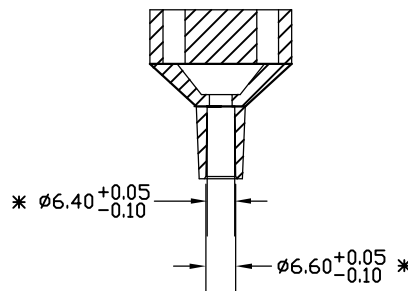


SECTION A-A
SCALE 2 : 1



SECTION B-B
SCALE 2 : 1

NOTES:

1. MATERIAL: 1-PVC, RIGID, BLUE, 10014G-010 BY COLDRITE & PVC, SEMIRIGID, BLUE, 9077G-015M BY COLDRITE.
2-PVC, SEMIRIGID, BLUE, 9077G-015M BY COLDRITE.
(PRESENCE OF LESS THAN 0.1% PHTHALATE RESIDUE, IN ACCORDANCE WITH REACH DIRECTIVE, AS DECLARED BY THE SUPPLIER.)

2. VENDOR SHALL CERTIFY FOR EACH SHIPMENT THAT EACH SHIPMENT IS TRACEABLE TO VENDOR'S LOTS AND VENDORS SUPPLIER(S) LOTS.

3. MATERIAL IS COMPATIBLE WITH ETO, GAMMA AND BETA STERILIZATION.

4. FLASH/GATE:
CONNECTING AREAS/FLUID PATH NOT TO EXCEED .012"
EXTERNAL FLASH NOT TO EXCEED .020"

EMBEDDED MATERIAL:
NO BLACK SPOT OR BURN $\geq .040''$
NOT MORE THAN ONE MOLDING BURN $< .040''$

PARTICULATE:
NONE ALLOWED

5. ALL DIMENSIONS ARE FOR REFERENCE ONLY UNLESS OTHERWISE SPECIFIED.
* INDICATES INSPECTION DIMENSION.

6. BULK PACKAGE USING DOUBLE POLYVINYL BAGS.

A	INITIAL RELEASE PER ECD 1433	RFM	12-18-12	SP	12-18-12
REV	DESCRIPTION	DRAWN	DATE	APP'D.	DATE
REVISION HISTORY					
THIS DRAWING IS PROPRIETARY TO VITALMED, INC. REPRODUCTION OR USE WITHOUT WRITTEN AUTHORIZATION IS PROHIBITED.					
VITALMED, INC.					
VITALMED, INCORPORATED LAKEVILLE, MASSACHUSETTS 02347					
DESCRIPTION DRIP CHAMBER FOR 6.8 MM OD TUBING, DEHP FREE, ETO, GAMMA, BETA					
MATERIAL SEE NOTES		A	SCALE N/A	DWG NO 21639	REV A
FINISH NONE		SHEET 1 OF 1			
DRAWN	RTM	DATE	6/14/07	CHKD	RP
DATE	6/14/07	APVD	RFM	DATE	6/14/07

DRAWING SPECIFICATIONS:
UNLESS OTHERWISE NOTED
DIMENSIONS ARE IN INCHES
BREAK ALL SHARP EDGES
CORNER RADIUS = .010/.020
SURFACE FINISH = 32 RMS
TOLERANCES:
ANGLES = $\pm 1/2^\circ$
X.XX = $\pm .010$
X.XXX = $\pm .005$