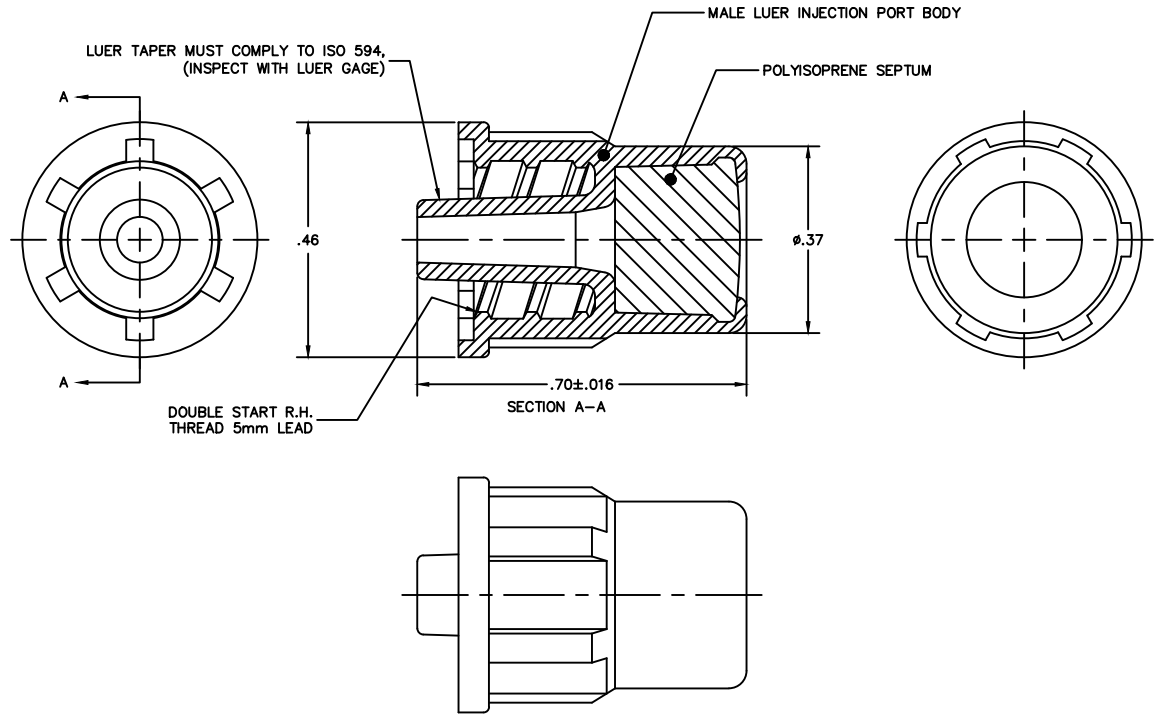


ITEM	DESCRIPTION	MATERIAL	Q.TY
1	BODY	ABS, TERLUX 2802 HD (MFG CODE 06228400M)	1
2	SEPTUM	POLYISOPRENE, COMPOUND 07001603 (MFG CODE 42927800)	1



NOTES:

- VENDOR SHALL CERTIFY FOR EACH SHIPMENT THAT:
A) EACH SHIPMENT IS TRACABLE TO VENDOR'S LOTS AND VENDOR'S SUPPLIER(S) LOTS.
- MATERIAL MUST BE COMPATIBLE WITH ETO AND GAMMA STERILIZATION.
- FLASH: CONNECTING AREAS / FLUID PATH NOT TO EXCEED .008", EXTERNAL FLASH NOT TO EXCEED .012"
GATE VESTIGE: NOT TO EXCEED .020"
EMBEDDED MATERIAL: NOT MORE THAN 0.4 MM2 FOR ONE SPOT, NOT MORE THAN 0.2 MM2 FOR 2 OR MORE SPOTS
PARTICULATE: NONE ALLOWED
- ALL DIMENSIONS ARE FOR REFERENCE UNLESS OTHER WISE SPECIFIED.
- BULK PACKAGE USING DOUBLE POLYVINYL BAGS.

D	REVISE PER ECO 1399	CS	7-27-12	AL	7-27-12	AL	7-27-12
C	CHANGE BODY MATERIAL FROM TERLUX 2802 TR TO 2802 HD	RM	03-22-07	AL	12-8-08	AL	12-8-08
B	CHANGE SEPTUM COMPOUND FROM 07001601 TO 07002803	DAP	04-01-04	APL	04-01-04	APL	04-01-04
A	INITIAL RELEASE	DAP	10-02-00	APL	10-10-00	APL	10-10-00
REV	DESCRIPTION	DRAWN	DATE	CHKD	DATE	APP'D	DATE
REVISION HISTORY							
DRAWING SPECIFICATIONS: UNLESS OTHERWISE NOTED		THIS DRAWING IS PROPRIETARY OF VITALMED, INC. REPRODUCTION OR USE WITHOUT WRITTEN AUTHORIZATION IS PROHIBITED.					
DIMENSIONS ARE IN INCHES BREAK ALL SHARP EDGES CORNER RADIUS = N/A SURFACE FINISH = N/A TOLERANCES: ANGLES = ±1/2° X.XX = ± .01 X.XXX = ± .005		VITALMED, INC.					
		DESCRIPTION: MALE LUER LOCK INJECTION SITE					
MATERIAL:	SEE NOTES	DRAWING TEMPLATE:	F088 REV 0	SCALE:	NONE	DWG NO:	20223
FINISH:	NONE			SHEET:	1 OF 1	REV:	D