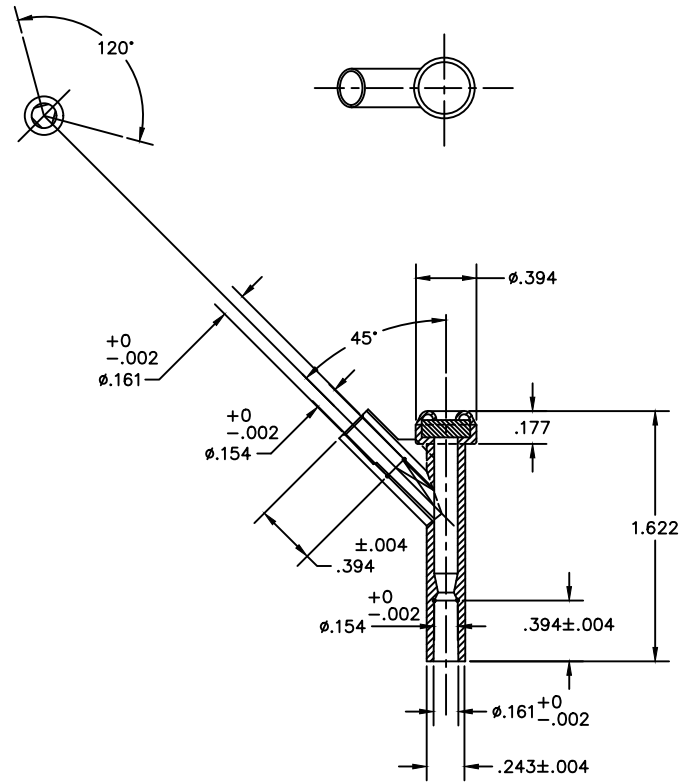


ITEM	DESCRIPTION	MATERIAL	Q.TY
1	BODY	ABS, CLEAR, TERLUX 2802 TR	1
2	SEPTUM	POLYISOPRENE, KRATON IR 307 (FORMERLY KNOWN AS CALIFLEX IR 307)	1



NOTES:

- VENDOR SHALL CERTIFY FOR EACH SHIPMENT THAT:
 - EACH SHIPMENT IS TRACEABLE TO VENDOR'S LOTS AND VENDOR'S SUPPLIERS(S) LOTS.
- MATERIAL MUST BE COMPATIBLE WITH ETO AND GAMMA STERILIZATION.
- FLASH:
 - EXTERNAL FLASH NOT TO EXCEED .012 IN.
 - INTERNAL FLASH NOT TO EXCEED .006 IN.
- ALL DIMENSIONS ARE FOR REFERENCE ONLY UNLESS OTHERWISE SPECIFIED.
- BULK PACKAGE USING DOUBLE POLYVINYL BAGS.

REV	DESCRIPTION	DRAWN	DATE	CHKD	DATE	APP'D	DATE
B	CHANGE .153 TO .154 TO REFLECT CORRECT ROUNDING PER ECO 1308	RM	6/3/11	SP	6/3/11	SP	6/3/11
A	INITIAL RELEASE	AL	09-09-03	RP	09-09-03	AL	09-09-03

REVISION HISTORY							
DRAWING SPECIFICATIONS: UNLESS OTHERWISE NOTED				THIS DRAWING IS PROPRIETARY OF VITALMED, INC. REPRODUCTION OR USE WITHOUT WRITTEN AUTHORIZATION IS PROHIBITED.			
DIMENSIONS ARE IN INCHES BREAK ALL SHARP EDGES CORNER RADIUS = N/A SURFACE FINISH = N/A TOLERANCES: ANGLES = ±1/2° X.XX = ± .01 X.XXX = ± .005				VITALMED, INC.			
DESCRIPTION: Y-CONNECTOR W/INJECTION SITE FOR Ø3 X 4.1 TUBING							
MATERIAL:	SEE NOTES	DRAWING TEMPLATE:	F088 REV 0	SCALE:	NONE	DWG NO:	20125
FINISH:	NONE			SHEET:	1 OF 1	REV:	B