



# ML ALBION User Guide



### Important remarks

- \* Please store the mechanical key in an outdoor safe place.
- \* Any function changes, please subject to the actual product.
- \* The photos in this guide are for reference only.

## Download and Install the APP



Enable your smart phone to scan QR code to download the APP. Also you can search 'TT Lock' on APP store or Google play to download the APP.

Scan to download APP

## Setting via lock

If you don't want to use the APP, you may follow the programming instructions below.

### 1 Create New Access

Add administrator (only 1):



- Enter \*12#
- Input 123456# (the initial code)
- Input admin code# (4-9 digits)
- Repeat admin code#

Add a new user with an access code (150 at most):



- Enter \*85#
- Input admin code#
- Input user code# (4-9 digits)
- Repeat user code#

Add a new user with an RFID card ( 200 at most):



- Enter \*85#
  - Input admin code#
  - Swipe the card
- Tips: If your smartphone supports NFC, copy the registered RFID card to your smartphone, the phone will be the key to unlock.

### 2 Modify Code

Modify Admin Code



- Enter \*12#
- Input old admin code#
- Input new admin code#
- Repeat the new admin code#

Modify User Code



- Enter \*10#
- Input old user code#
- Input new user code#
- Repeat the new user code#

### 3 Manage the Language



If not register the admin code, the default admin code is 123456

### 4 Delete User

Delete ALL Access Codes:



- Enter \*71#
- Input admin code#

Delete ALL RFID Cards:



- Enter \*69#
- Input admin code#

### 5 Reset the Lock

Long press the Reset button, when hear 'please input initialization passcode', input **000#**, reset successfully. All code/card/phone users will be deleted.

### 6 Demo Mode

The demo mode is turned off by default, when not register the admin code, enter **24679#** will open the demo mode. During the demo mode, input 123456# or any cards can unlock. After registering the admin, the demo mode will be invalid automatically.

### 7 Low Battery Alert

When the battery is in low power, the buzzer will warn 'low battery power' while each unlocking. The keypad light flashes 1 s . Please change with new Alkaline batteries, don't mix new and old batteries.

### 8 Scrambling Code Anti Peep

Users may enter any random digits before or/and after the correct passcode and can still gain access, make sure strangers can't steal your passcode by watching you nearby when you enter the passcode.

### 9 Always Open Mode

This stops the door from locking and puts it into passage mode. Useful when gardening, bringing groceries in from the car etc.



After a successful unlock performance, press '123#' within 5 seconds, will activate Always open mode. The mode will keep the door unlocked.



To deactivate Always Open Mode, just unlock once again via card/code/APP. If you activate the Always Open Mode on APP, you must close it on APP, too.

### 10 FAQ

#### 10.1 Installation completed, but there is no power

Please check the Positive and Negative of batteries.

#### 10.2 Lock won't response and lock keypad can't light up

- If the lock is just installed and battery inserted correct, please check whether the cable connection between exterior and interior unit is properly connected to both units. Check the cable for nicks or damages.
- If the lock already used for a while, please check if the battery is dead. You can insert new battery or connect to a power bank to the USB port.

#### 10.3 The door won't be locked automatically

- Please check if the lock is under Always open Mode.
- Please refer to the direction of Letter A and Letter B on the exterior lock spindle holder. Make sure the spindle holder direction is correct.

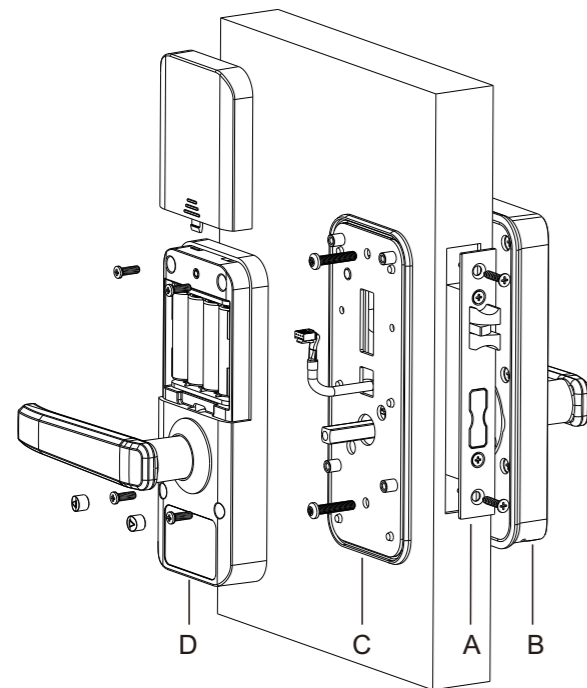
#### 10.4 The battery life is short

- Please check whether the cable connection between exterior and interior unit is properly connected to both units. Check the cable for nicks or damages.
- Please check whether the Alkaline batteries installed are all new. Don't mix the old and new batteries. Don't use the rechargeable battery.

# Installation Instructions

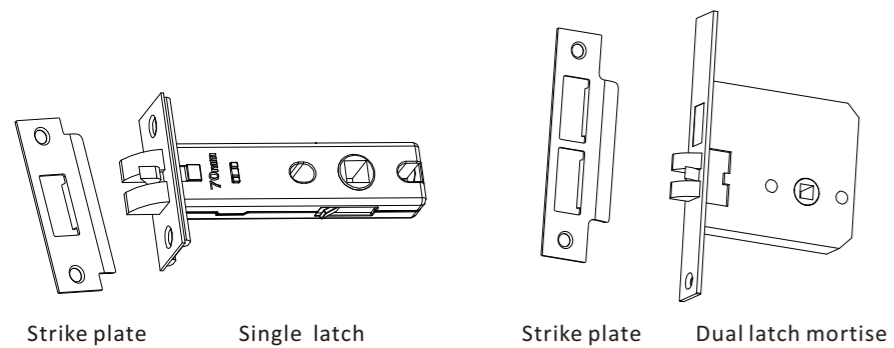
## 1. Explosion diagram

- A. Lock mortise
- B. Exterior assembly
- C. Mounting plate
- D. Interior assembly

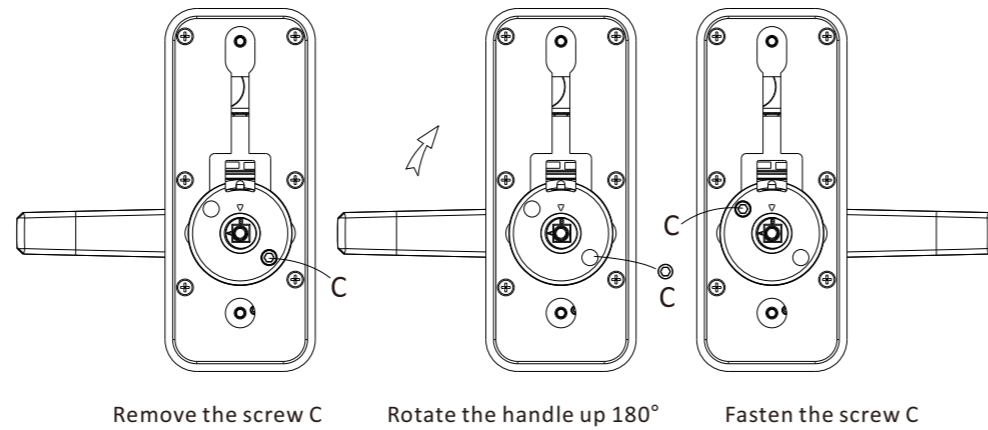


## 2. Install the lock mortise

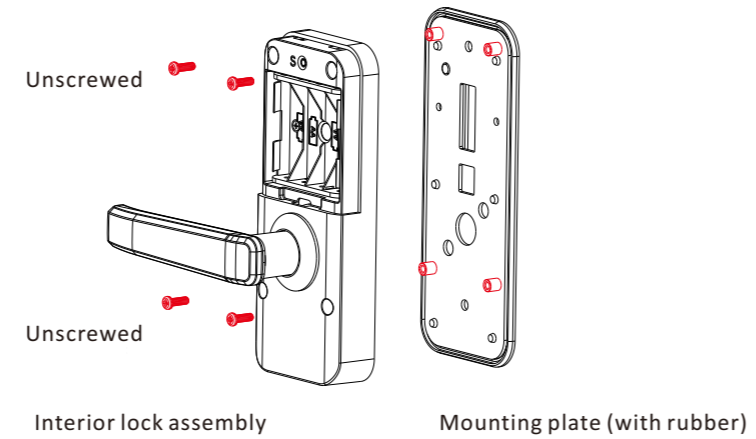
This lock supports two different types of lock mortise as follows. Check what you get in the box and install it on the door. Ensure that the mortise faceplate is flush with the door, according to the mortise position.



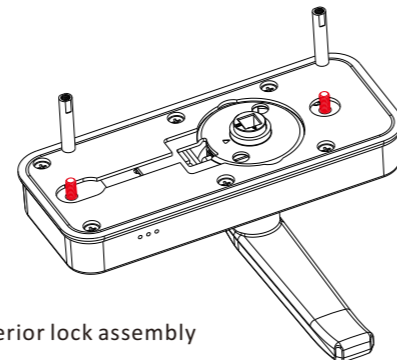
## 3. Reverse the direction of the lock handle (when needed)



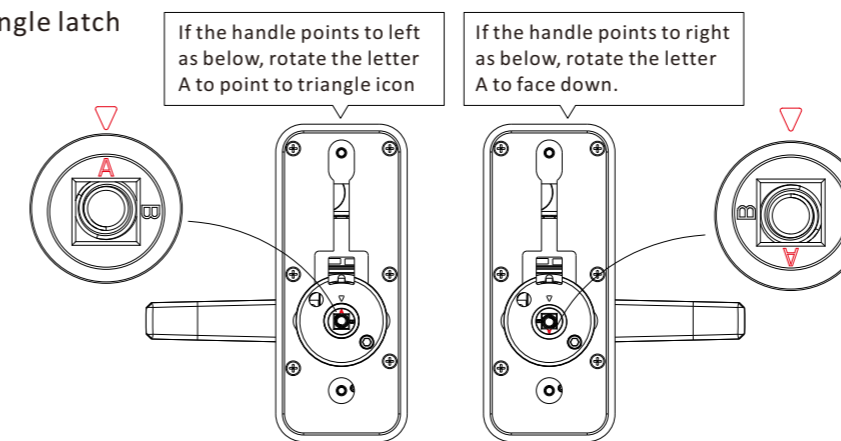
## 4. Dismantle the mounting plate from the interior lock assembly as below.



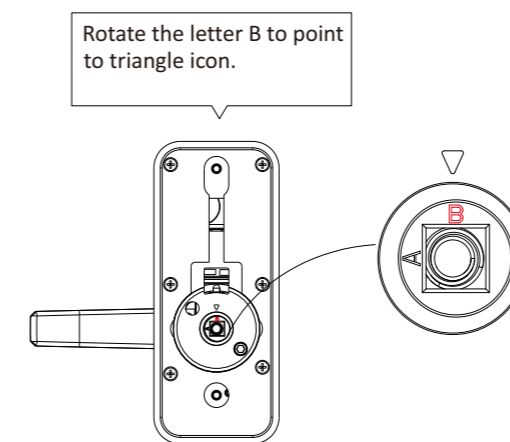
## 5. Tighten 2 screw studs on the exterior lock metal plate



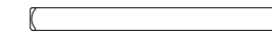
## Single latch



## Dual latch mortise

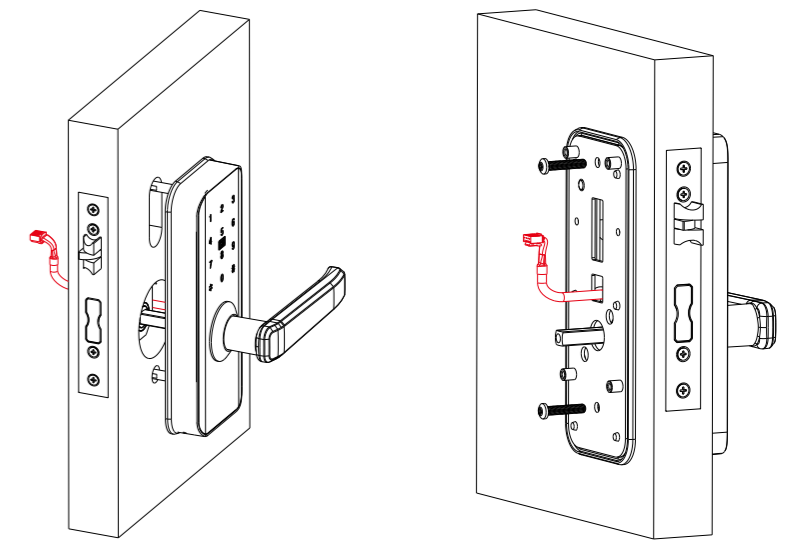


Choice of the spindle length= door thickness+18~39mm



## 6. Install exterior lock assembly

- A. Take the exterior lock assembly and place it on the door, the cable goes under the latch, slide the spindle through the mortise square hole.
- B. Put the mounting plate and pass the cable from the middle hole of the plate.
- C. Screw the two screws but don't tighten them yet.
- D. Align the mounting plate with the door edge and must make sure there is enough space between the spindle and the round hole on the mounting plate.
- E. Place the interior lock assembly, turn the front and rear handles to check both can go smoothly.
- F. Remove the interior lock assembly, then tighten the two screws.



## 7. Install interior lock assembly

- A. Connect the cable to interior lock assembly.
- B. Put and tighten the four screws.
- C. Put the silicon cover back to the bottom screws holes.
- D. Test the handle and mechanical key.
- E. If you have a power bank, please connect to the bottom USB port on the exterior lock.
- F. Put 4pcs AA batteries. Now you can start to config the settings.

