

LITOM

# USER MANUAL

---

## SOLAR LANDSCAPE LIGHT

---



Water  
Proof



Heat  
Resistance



Frost  
Resistance



12 LED

---

## INTRODUCTION

The solar Landscape light can automatically detect surrounding brightness: it enters charging mode to convert sunlight to electricity that is stored in the built-in battery in daytime; it automatically lights up at night. It has 2 modes, so you can adjust to a desired mode by pressing the back button.

It can be used not only as a lawn light, but also as a wall light. If you like outdoor sports, use it as a camping light or a flashlight.



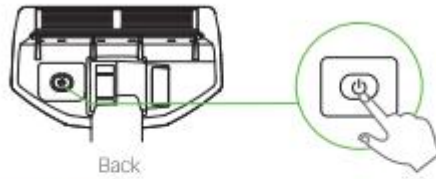
## PACKING LIST



1. Solar Landscape Light
2. Ground Stake
3. Screw
4. Wall Plug
5. User Manual

## OPERATION GUIDE

- The default mode of the product is OFF mode. Press the back button to adjust modes when using the product.



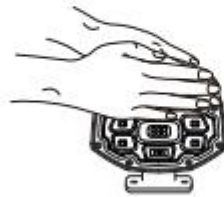
**1. LOW Light Mode:** Press the Power button for once, the landscape light will charge but not light up in the day, and it will automatically light up dim light in darkness or at night.

**2. HIGH Light Mode:** On the basis of LOW Light Mode, press the Power button again. The landscape light will charge but not light up in the day, and it will automatically light up bright light in darkness or at night.

**OFF:** On the basis of HIGH Light Mode, press the Power button again. The landscape light will power off.

## NOTE

1. It is recommended to turn off the light and charge it under direct sunlight for 1-2 days before the first use. Make sure the product has enough power.
2. If you want to check whether the product can work normally or not, please turn it on by pressing the back button, then cover the solar panel with your hands in the daytime or put it in a dark environment.



3. During the installation, please make sure the landscape light is installed under direct sunlight where there is no shade or eave to shelter the solar panel. Otherwise, the lighting time will be shorter.

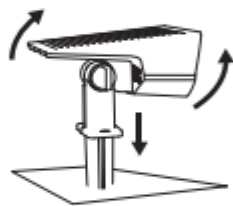
4. If the lighting time shortens after the product has worked for a period, check whether the solar panel is covered with dusts and clean it regularly.

## INSTALLATION

- Press the back button and select a desired mode. Then choose a place that can get enough sunshine to install the light, the longer it gets sunshine, the longer it can illuminate.

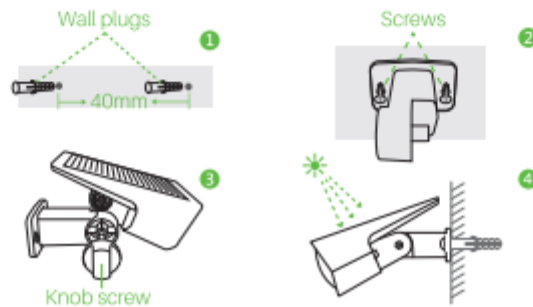
### Method 1: Ground Inserted

- 1 Connect the ground stake with the light, and adjust the angle through loosening and tightening the knob screw to get enough sunlight during the day.
- 2 Insert the whole light into the ground vertically.



### Method 2: Wall Mounted

- 1 Punch two holes on the wall with a drill bit and insert the attached wall plugs into the holes. Then, twist the screws through the screw holes of holder into the wall plugs.
- 2 Adjust the angle, then tighten the holder and the light through the knob screw.



## FCC STATEMENT

Operation is subject to the following two conditions:

- (1) This device may not cause harmful interference, and
- (2) This device must accept any interference received, including interference that may cause undesired operation.

Note: This equipment has been tested and found to comply with the limits for a Class B digital device, pursuant to part 15 of the FCC Rules. These limits are designed to provide reasonable protection against harmful interference in a residential installation. This equipment generates, uses and can radiate radio frequency energy and, if not installed and used in accordance with the instructions, may cause harmful interference to radio communications. However, there is no guarantee that interference will not occur in a particular installation. If this equipment does cause harmful interference to radio or television reception, which can be determined by turning the equipment off and on, the user is encouraged to try to correct the interference by one or more of the following measures:

- Reorient or relocate the receiving antenna.
- Increase the separation between the equipment and receiver.
- Connect the equipment into an outlet on a circuit different from that to which the receiver is connected.
- Consult the dealer or an experienced radio / TV technician for help.

## CORRECT DISPOSAL OF THIS PRODUCT



(Waste Electrical & Electronic Equipment)

This marking shown on the product or its literature, indicates that it should not be disposed with other household wastes at the end of its working life.

To prevent possible harm to the environment or human health from uncontrolled waste disposal, please separate this from other types of wastes and recycle it responsibly to promote the sustainable reuse of material resources.

Household user should contact either the retailer where they purchased this product or their local government office for details of where and how they can take this item for environmentally safe recycling.

Business users should contact their supplier and check the terms and conditions of the purchase contract.

This product should not be mixed with other commercial wastes for disposal.

>>> THANKS FOR READING!

If you have any questions about our product, be free to contact us.

[support@istartop.com](mailto:support@istartop.com)