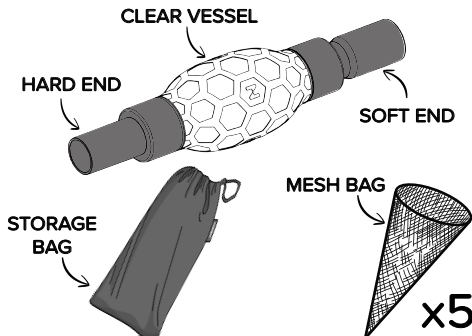


USER INSTRUCTIONS

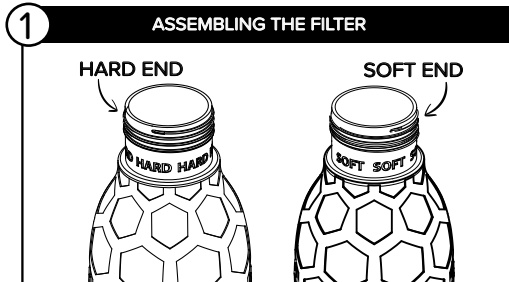
THANK YOU FOR PURCHASING YOUR NEW COLAPZ PRODUCT! PLEASE READ THESE INSTRUCTIONS CAREFULLY BEFORE USE, TO HELP WITH THE INITIAL SET-UP.

CONTENTS: 1 x IN-LINE FILTER, 5 x MESH BAGS,
1 x STORAGE BAG



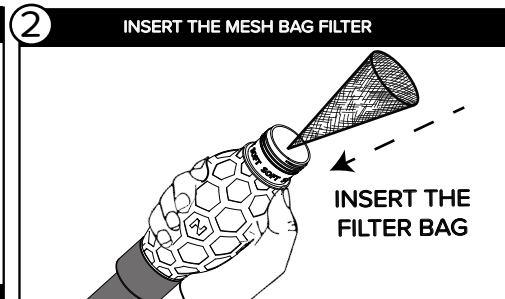
PLEASE NOTE: FLEXI-WASTE PIPES, DOUBLE ADAPTORS, 90 DEGREE ELBOW AND ROCK PEGS ARE NOT INCLUDED. THEY CAN BE PURCHASED SEPARATELY.

THE IN-LINE FILTER HAS BEEN DESIGN TO WORK WITH THE COLAPZ FLEXI-PIPE SYSTEM. DEPENDING ON HOW YOUR WASTE SYSTEM WORKS, THE FILTER CAN BE USED IN EITHER DIRECTION (HARD END OR SOFT END)

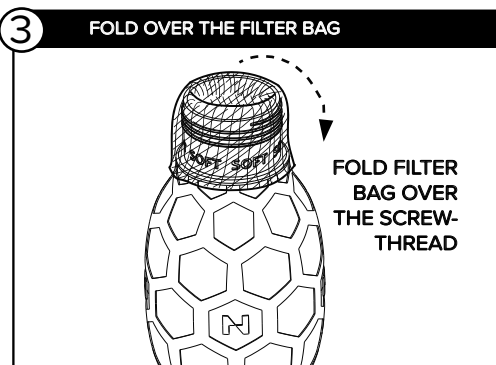


IMPORTANT!

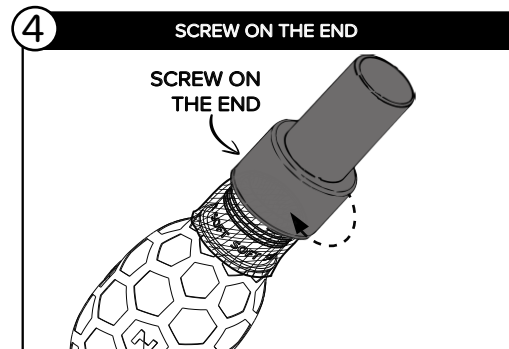
EACH END PART IS DIFFERENT AND WILL ONLY FIT ON ONE END OF THE CLEAR TUBE. THE CLEAR TUBE HAS INDICATORS TO SHOW WHICH IS THE SOFT AND HARD END.



ONCE YOU HAVE DECIDED WHICH WAY YOU WOULD LIKE THE FILTER TO WORK, (THERE ARE SOME SCENARIO'S ON THE BACK OF THESE INSTRUCTIONS) UNSCREW THE END WHICH WILL TAKE THE FILTER BAG. INSERT THE POINTED END OF THE FILTER INTO THE CLEAR TUBE.



FOLD THE TOP EDGE OF THE FILTER BAG OVER THE THREADED OPENING.



SCREW ON THE END TRAPPING THE MESH BAG. ENSURE THIS IS SCREWED ON TIGHTLY.

