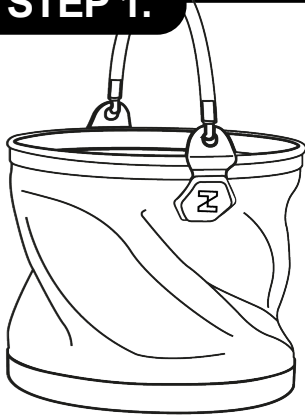


colapz®

USER INSTRUCTIONS

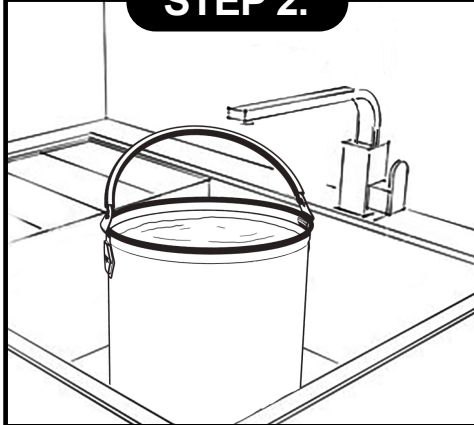
THANK YOU FOR PURCHASING YOUR NEW COLAPZ PRODUCT!
PLEASE READ THESE INSTRUCTIONS CAREFULLY BEFORE
USE, TO HELP WITH THE INITIAL VESSEL SET-UP.

STEP 1.



REMOVE ANY LID THAT MAY BE ON YOUR PRODUCT. HOLD THE GRAB HANDLE AT THE BASE AND THE TOP EDGE OF THE VESSEL, AND THEN TWIST IT ANTI-CLOCKWISE INTO THE UPRIGHT POSITION.

STEP 2.

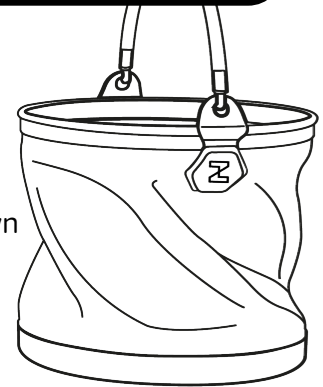


ADDING WATER WILL HOLD THE VESSEL IN AN UPRIGHT POSITION.

TOP TIP! ADDING WARM WATER BEFORE FIRST TIME USE WILL HELP TO REDUCE CREASES.

PACKING AWAY

Twist down



TO PACK THE VESSEL AWAY, HOLD THE GRAB HANDLE AT THE BASE AND THE TOP EDGE OF THE VESSEL AND THEN TWIST IN A CLOCKWISE DIRECTION.

For any further information on how to use the product visit:
www.youtube.com/watch?v=1hBWNiCPvj8