



YOUR **ESSENTIAL** WALL CASE

THE
FIXTURE
STORE

YOUR ESSENTIAL WALL CASE

Retailers love wall cases for increasing both their display space as well as on floor storage space. Our essential wall cases are built with retailers in mind.

You can choose from either a high or low storage base and 2 different widths – making these wall cases work in many different spaces.

The standard options for top storage are moveable melamine shelves, slatwall or moveable glass shelves with glass doors. Each wall case can stand alone or be paired with other wall cases to cover entire walls in your space.

You can also add customizations like lighting, vinyl graphics or LED graphic display flip frames.

3FT WALL CASES

36 INCHES WIDE | 14.75 INCHES DEEP | 90 INCHES HIGH

LOW BASE



HIGH BASE



Add-Ons: Vertical Lighting, Vinyl Graphics

3FT WALL CASES LOW BASE DISPLAY OPTIONS

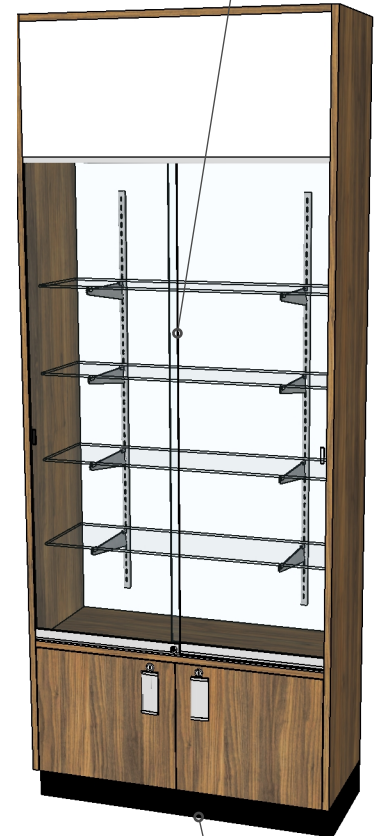
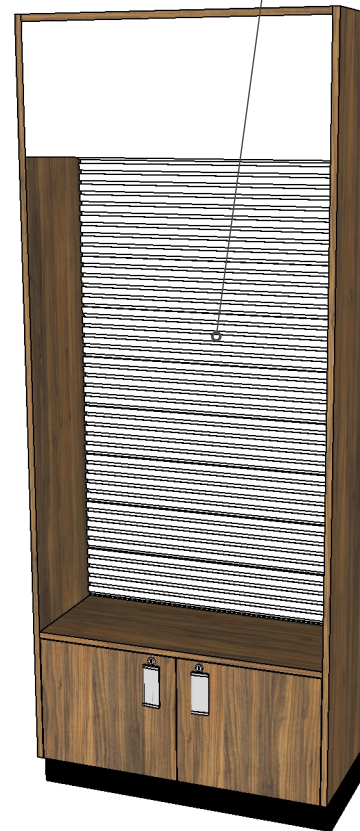
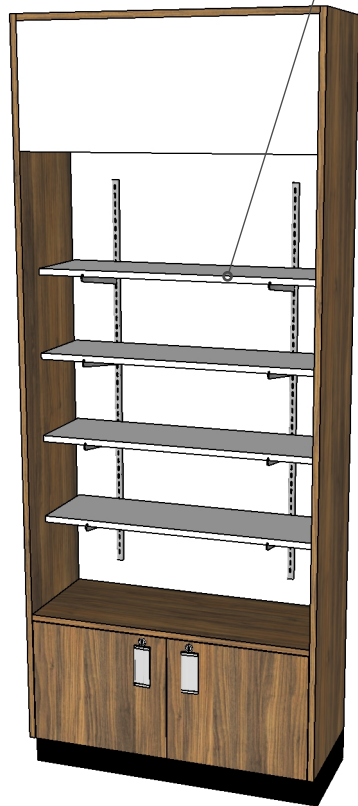
36 INCHES WIDE | 14.75 INCHES DEEP | 90 INCHES HIGH

4 Movable Melamine Shelves On Standards

4 Movable Glass Shelves On Standards

Slatwall

2 Locking, Sliding Glass Doors



2 Locking Storage Cabinets

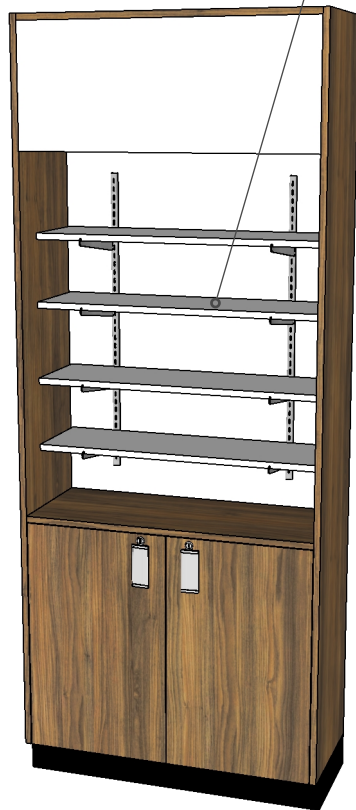
Standard Full Kicks For Added Stability

Add-Ons: Vertical Lighting, Vinyl Graphics

3FT WALL CASES HIGH BASE DISPLAY OPTIONS

36 INCHES WIDE | 14.75 INCHES DEEP | 90 INCHES HIGH

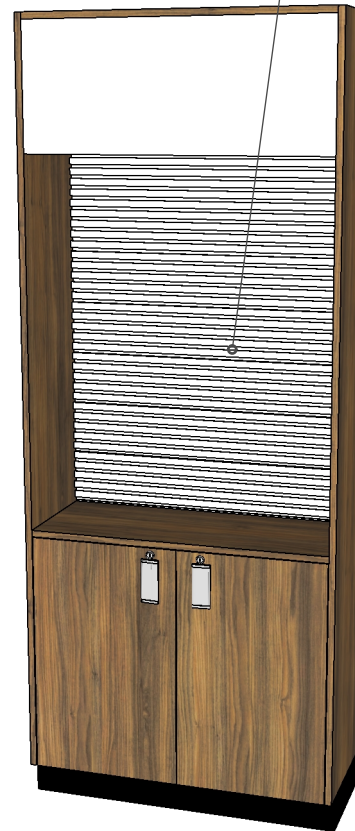
4 Movable Melamine Shelves On Standards



4 Movable Glass Shelves On Standards



Slatwall



2 Locking, Sliding Glass Doors



2 Locking Storage Cabinets With 1 Adjustable Shelf

Standard Full Kicks For Added Stability

Add-Ons: Vertical Lighting, Vinyl Graphics

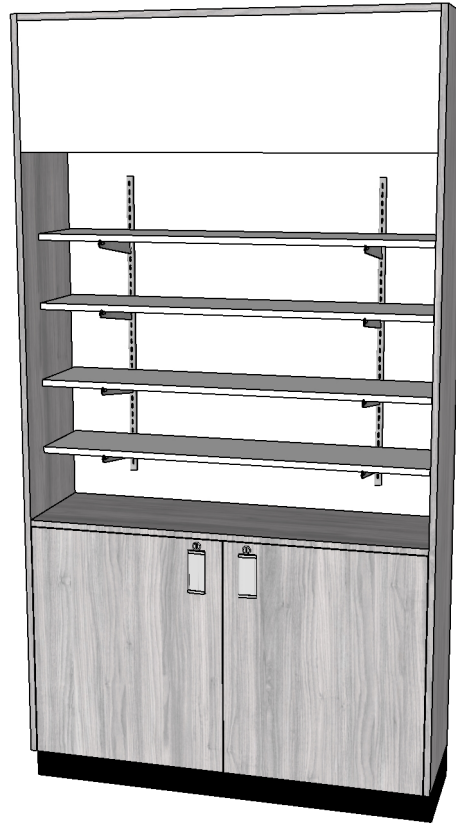
4FT WALL CASES

LOW BASE



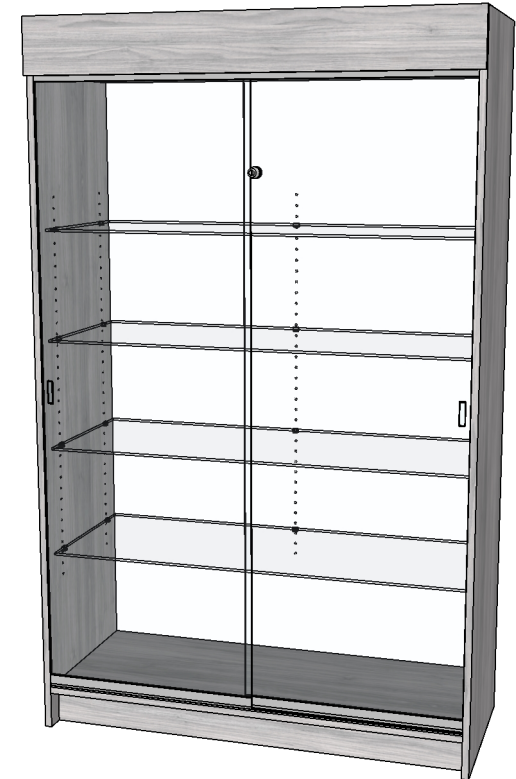
**48 INCHES WIDE | 14.75 INCHES DEEP
90 INCHES HIGH**

HIGH BASE



**48 INCHES WIDE | 14.75 INCHES DEEP
90 INCHES HIGH**

FULL VISION



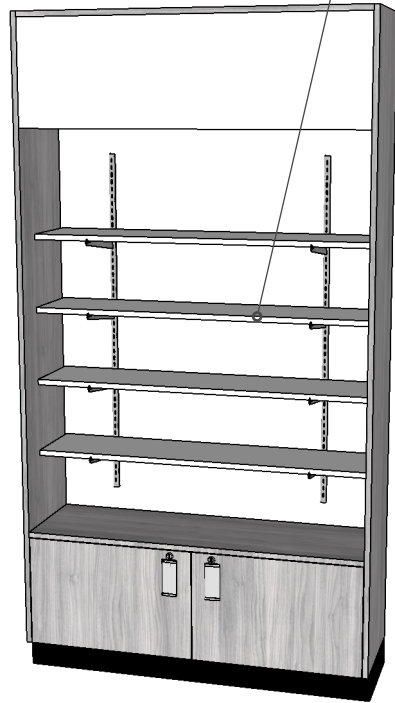
**48 INCHES WIDE | 20 INCHES DEEP
78 INCHES HIGH**

Add-Ons: Vertical Lighting, Vinyl Graphics

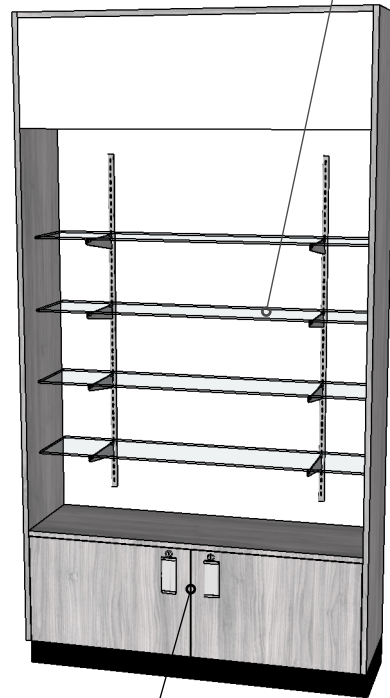
4FT WALL CASES LOW BASE DISPLAY OPTIONS

48 INCHES WIDE | 14.75 INCHES DEEP | 90 INCHES HIGH

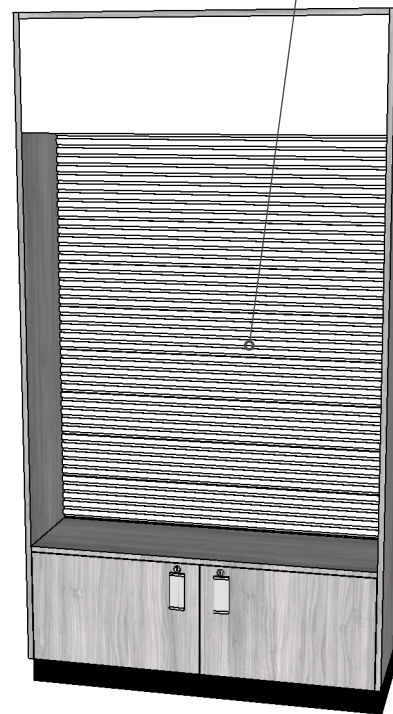
4 Movable Melamine Shelves On Standards



4 Movable Glass Shelves On Standards



Slatwall



2 Locking, Sliding Glass Doors



2 Locking Storage Cabinets

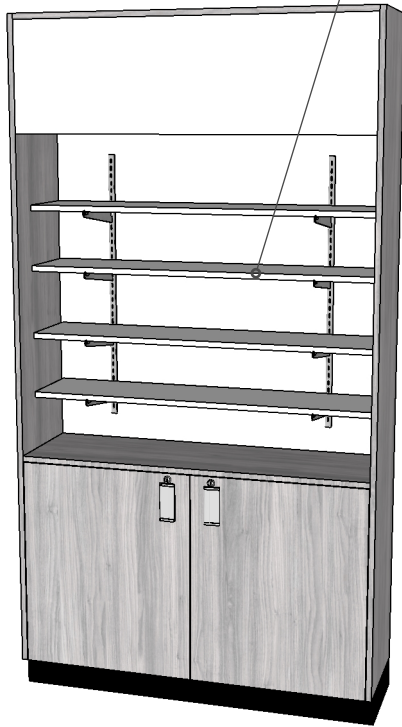
Standard Full Kicks For Added Stability

Add-Ons: Vertical Lighting, Vinyl Graphics

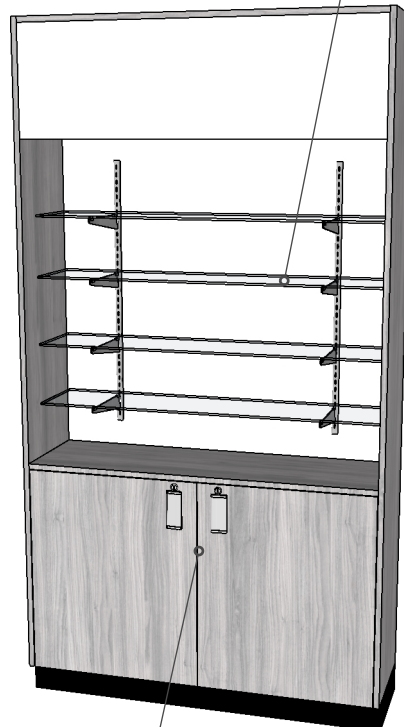
4FT WALL CASES HIGH BASE DISPLAY OPTIONS

48 INCHES WIDE | 14.75 INCHES DEEP | 90 INCHES HIGH

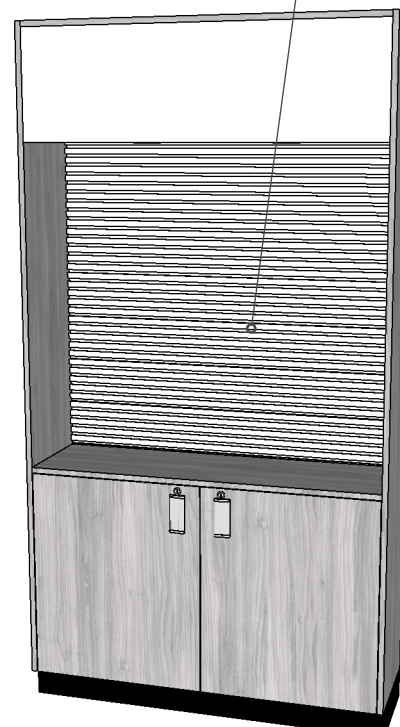
4 Movable Melamine Shelves On Standards



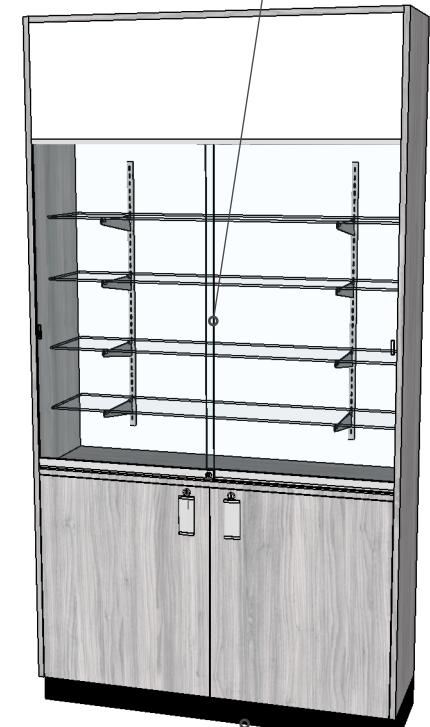
4 Movable Glass Shelves On Standards



Slatwall



2 Locking, Sliding Glass Doors



2 Locking Storage Cabinets With 1 Adjustable Shelf

Standard Full Kicks For Added Stability

Add-Ons: Vertical Lighting, Vinyl Graphics