



YOUR **ESSENTIAL** CASH DESK

THE
FIXTURE
STORE

YOUR ESSENTIAL CASH DESK

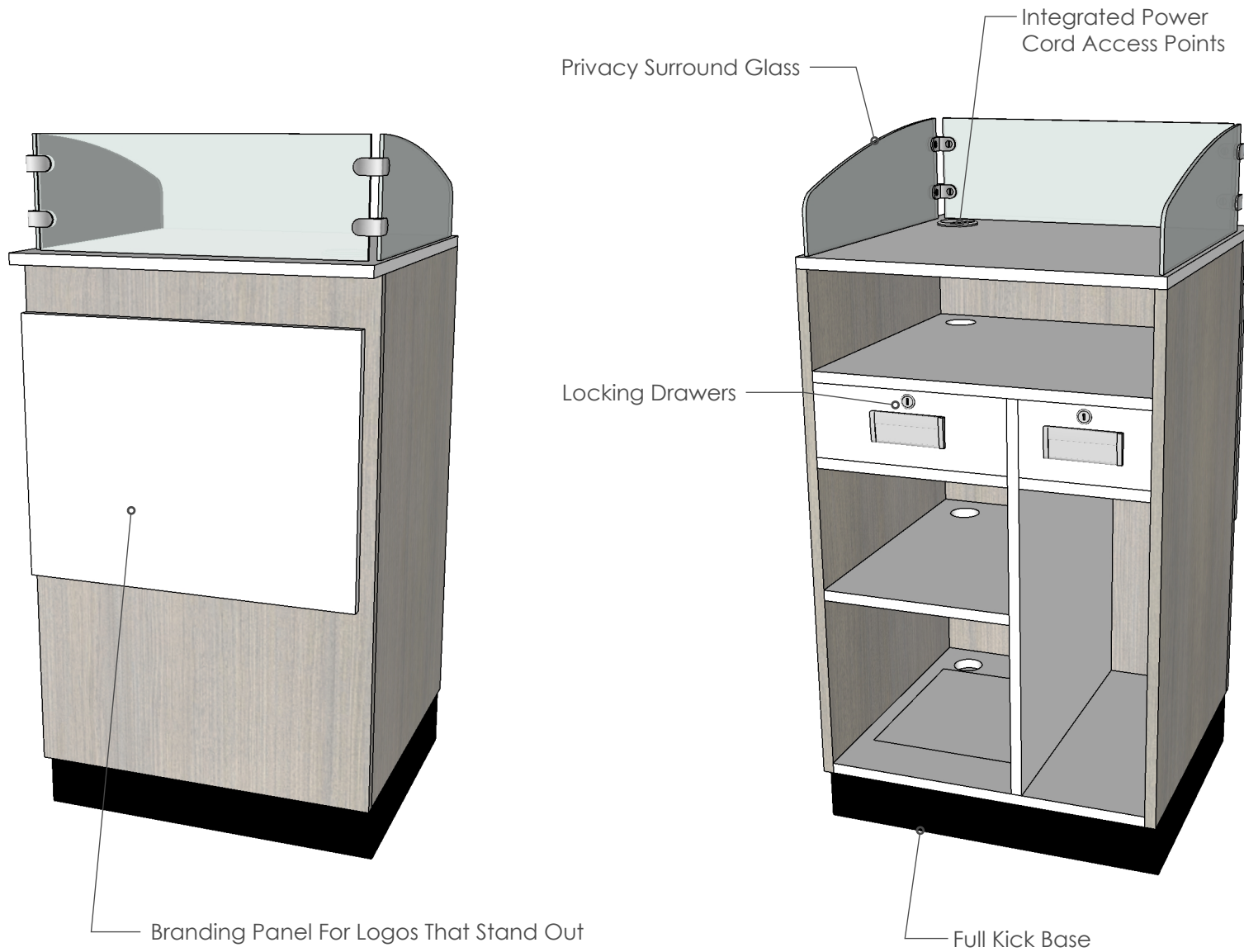
A cash desk is often the first and central piece to any retail operation. The Essential Cash Desk has been designed to deliver both style and function.

Two locking drawers, multiple shelves, built in power cord access points, and customizable branding surface make this desk work hard for your business.

Consider pairing the essential cash desk with a wrap desk or filler to extend your counter surface or storage space.

2FT CASH DESK

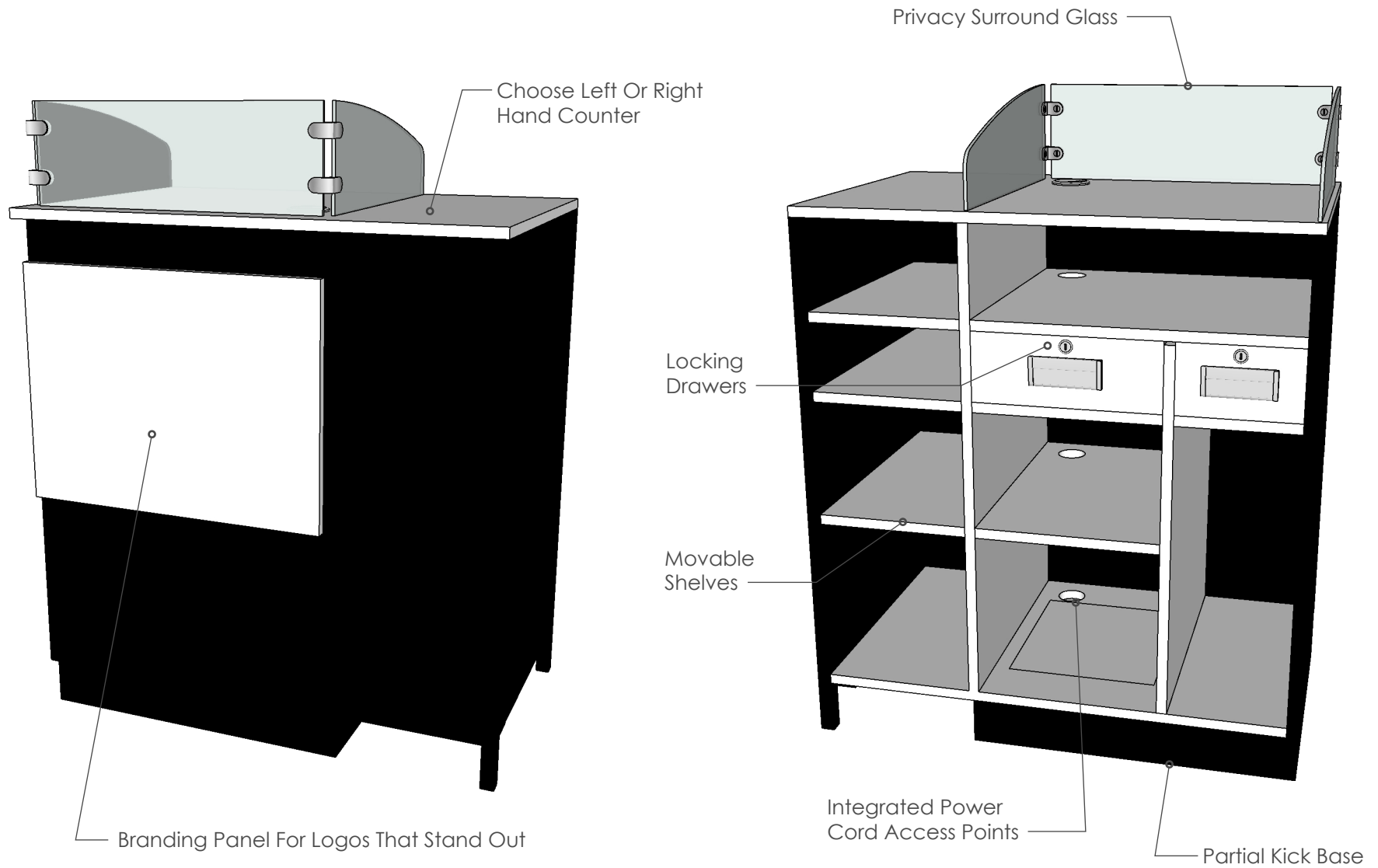
24 INCHES WIDE | 24 INCHES DEEP | 40 INCHES HIGH COUNTER



Add-On: Vinyl Graphic

3FT CASH DESK

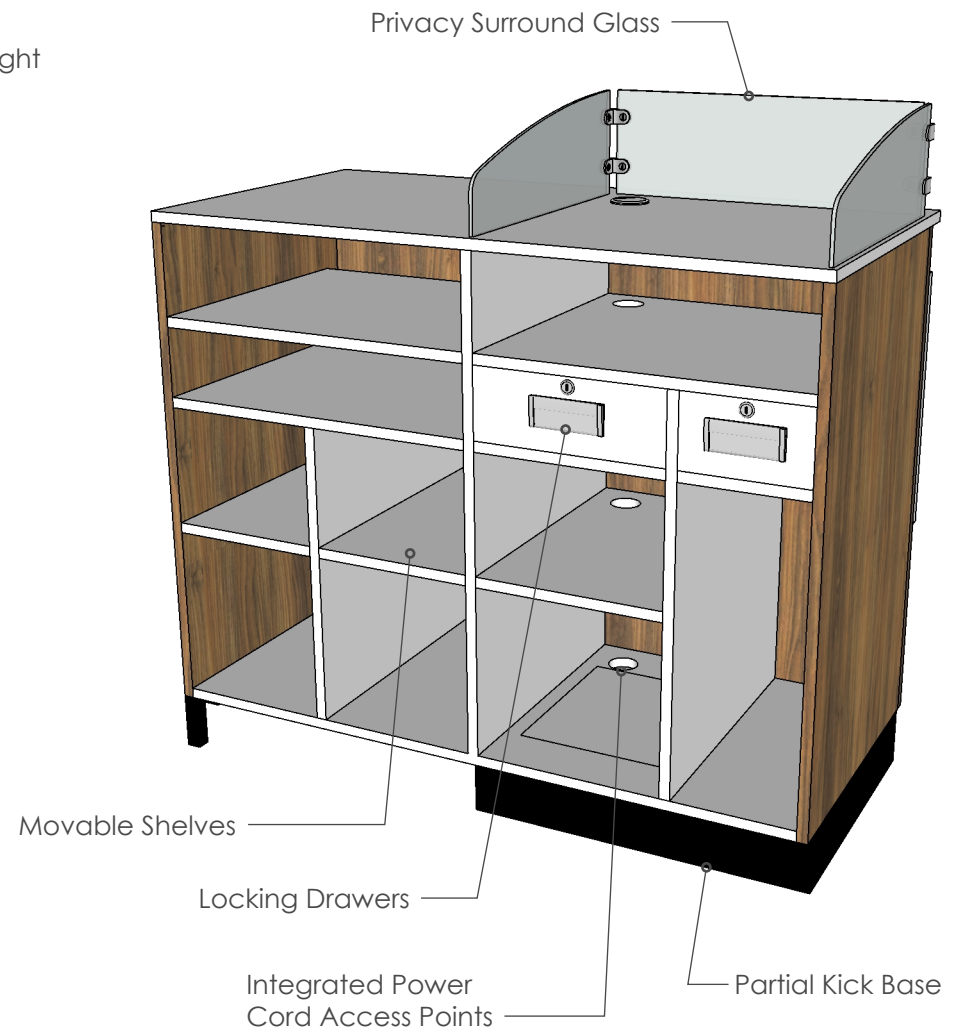
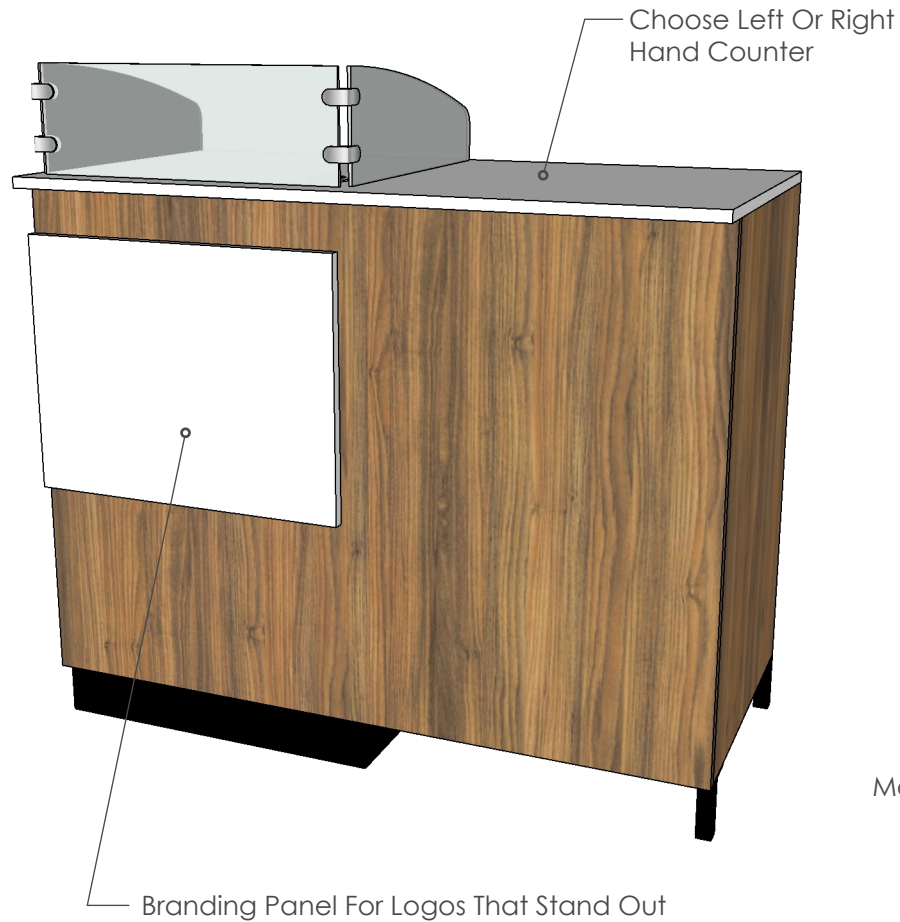
36 INCHES WIDE | 24 INCHES DEEP | 40 INCHES HIGH COUNTER



Add-On: Vinyl Graphic

4FT CASH DESK

48 INCHES WIDE | 24 INCHES DEEP | 40 INCHES HIGH COUNTER



Add-On: Vinyl Graphic Or LED Graphic Display Frame