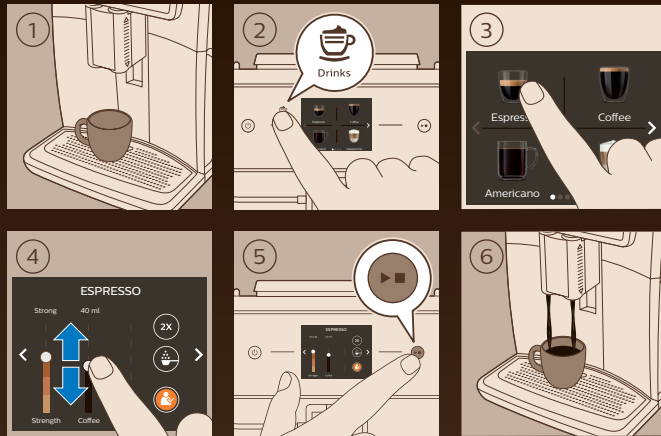
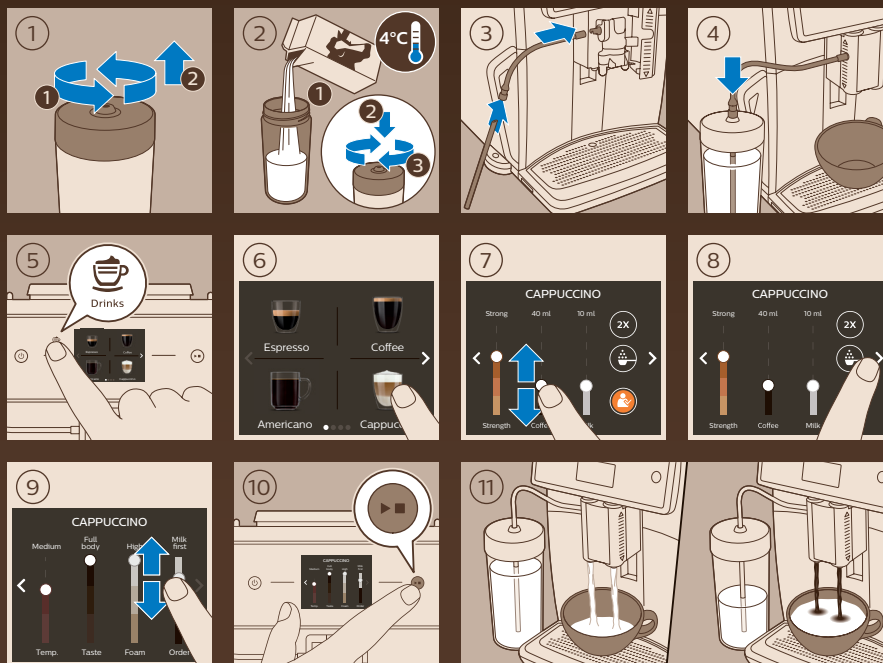


## ESPRESSO



## CAPPUCCINO



[www.saeco.com/care](http://www.saeco.com/care)

4219.440.8515.1

# Saeco



## Xelsis

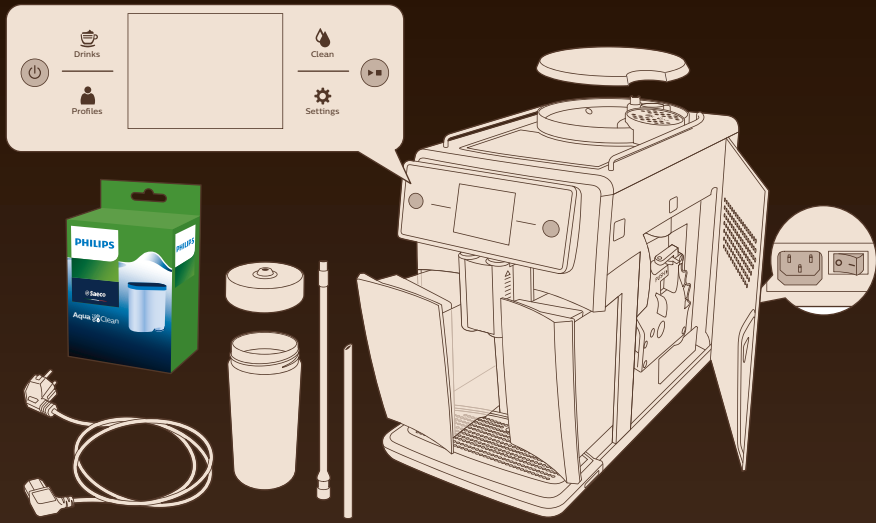
SM7686, SM7685, SM7684  
SM7683, SM7680



[WWW.SAECO.COM/CARE](http://WWW.SAECO.COM/CARE)

**PHILIPS**

Saeco, a Philips brand



## FIRST USE

1. Plug the power cord into the wall outlet.
2. Press the power button on the machine.
3. Select a language: English, Italiano, Deutsch, Français.
4. Add water to the water tank.
5. Insert the AquaClean water filter into the filter holder.
6. Fill the water tank with water up to the MAX level.
7. Close the filter holder.
8. Place a cup under the spout.
9. Press the power button to start the machine.
10. The machine dispenses water into the cup.
11. A screen asks: "Would you like to install the 5000 cups without descaling? AquaClean filter to enjoy?" with Yes/No options.

12. Insert the AquaClean filter into the filter holder.
13. Push the filter holder into the machine (5 sec).
14. Fill the water tank with water (30 sec).
15. Place a container under the spout.
16. Dispense water up to the MAX level.
17. Close the filter holder.
18. Place a cup under the spout.
19. Press the power button to start the machine.
20. Screen displays: "ACTIVATING FILTER.."
21. The machine dispenses water into the cup.
22. Check the water level in the cup.
23. Wait 1 second.
24. The machine dispenses water into the cup (1 min).
25. Screen displays: "WATER HARDNESS" with a scale from 1 to 4.
26. Screen displays: "HEATING UP" with a thermometer icon.
27. Screen displays: "RINSING" with a circular arrow icon.
28. The machine dispenses water into the cup.
29. Place the coffee cup on the machine's tray.
30. Add coffee grounds to the cup.
31. Screen displays: "For more information, please visit" with a QR code and the website www.saeco.com/care.