



Streamline

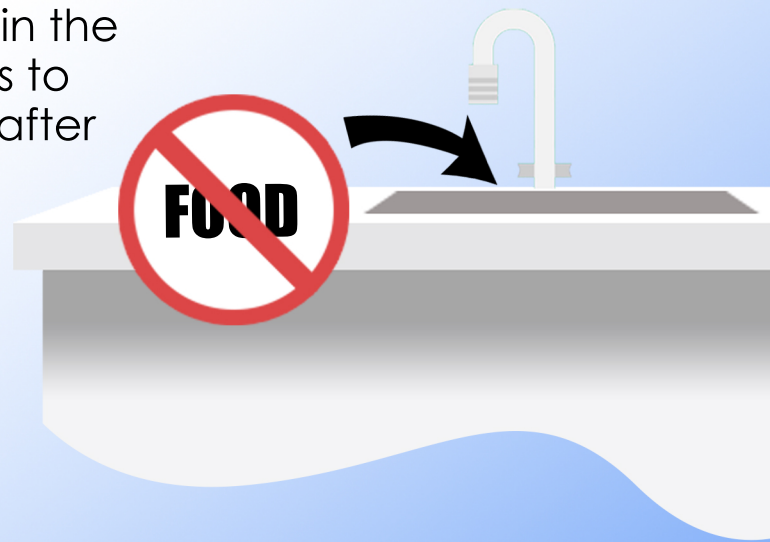


# Product Care Guide Kitchen Sinks

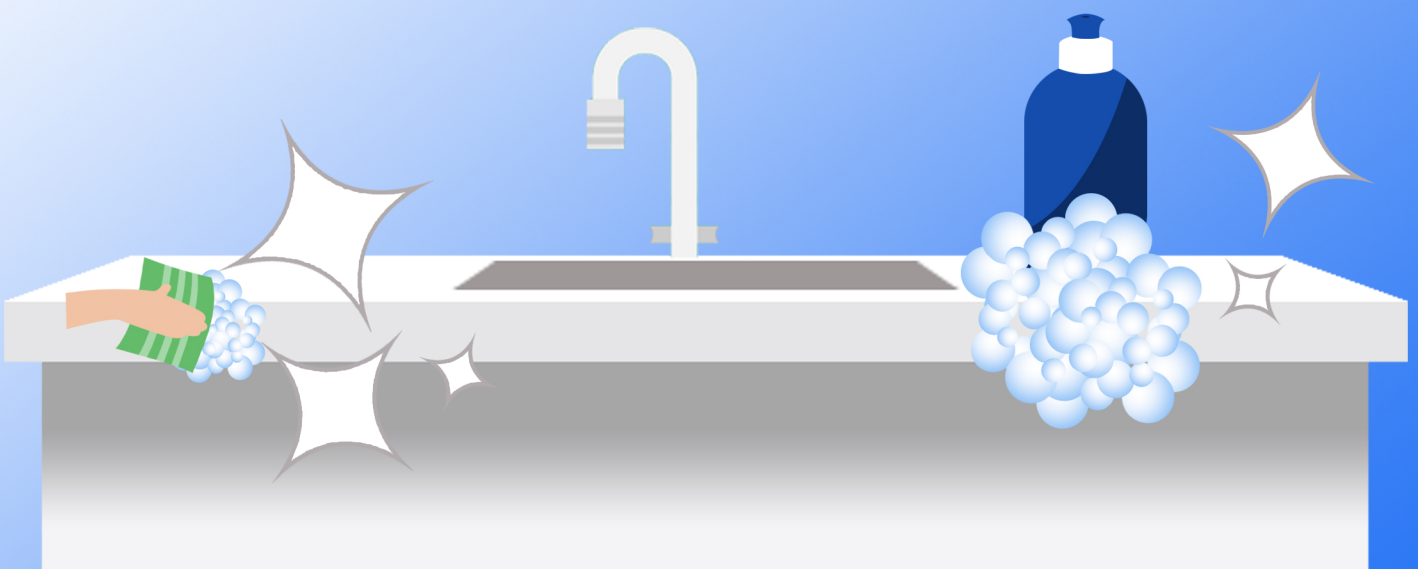
- When cleaning the sink, please only use a soft cotton cloth, brush, or sponge. Using an abrasive material may cause damage to the sink.



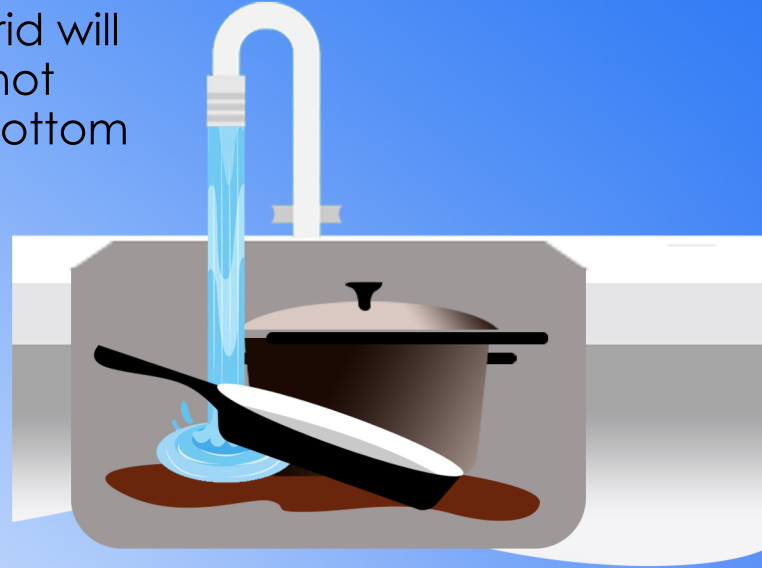
- Make sure to not keep any food in the sink as this may cause color stains to appear. Always rinse off the sink after using it.



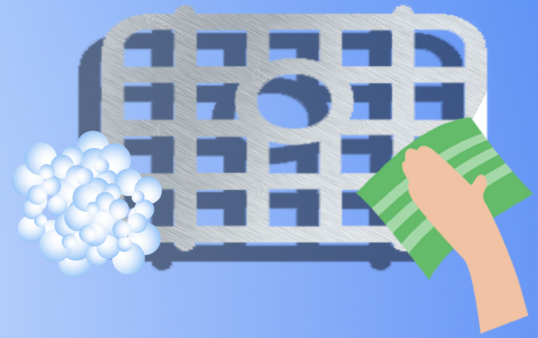
- Daily maintenance of the sink will ensure a lifetime of use! When maintaining the sink daily, simple soapy water and mild dish detergent are acceptable to clean dirt and stains. Make sure to rinse thoroughly.



- Using the provided kitchen sink grid will ensure that any pots or pans do not damage or leave marks on the bottom of the sink.



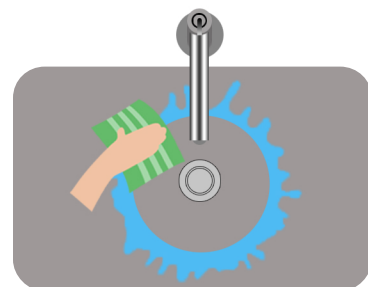
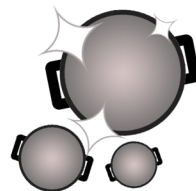
- Regularly wash the grid to make sure that no buildup of food is left.



- If marks do appear on the bottom of the sink, rest assured that they are most likely not scratches but simple marks from pots or pans that can be wiped away.



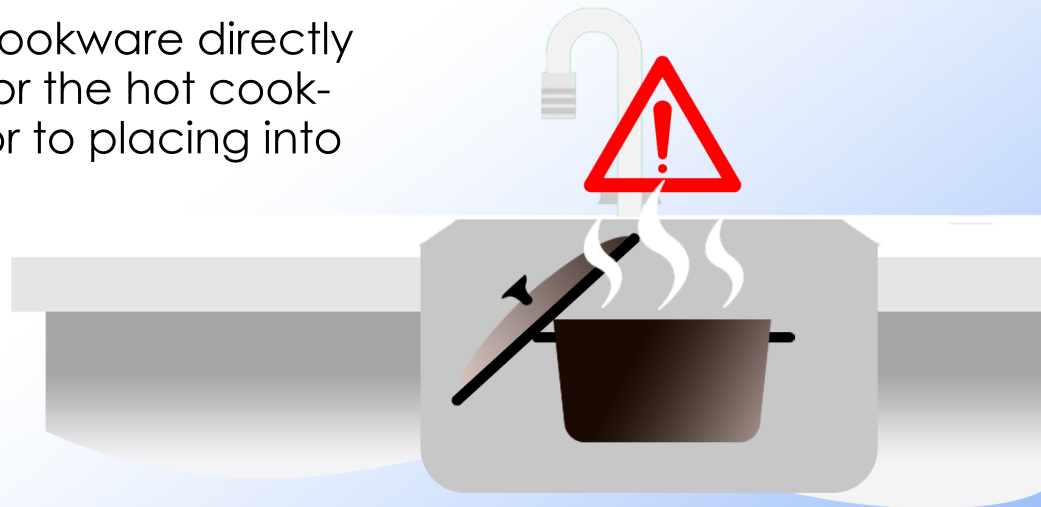
- After you are done rinsing off dishes, make sure to wipe away any water in the sink to avoid water spots. Please use a soft cloth to dry the sink.



- Avoid steel or metal cleaning pads as their abrasive surface can damage the interior of the sink.



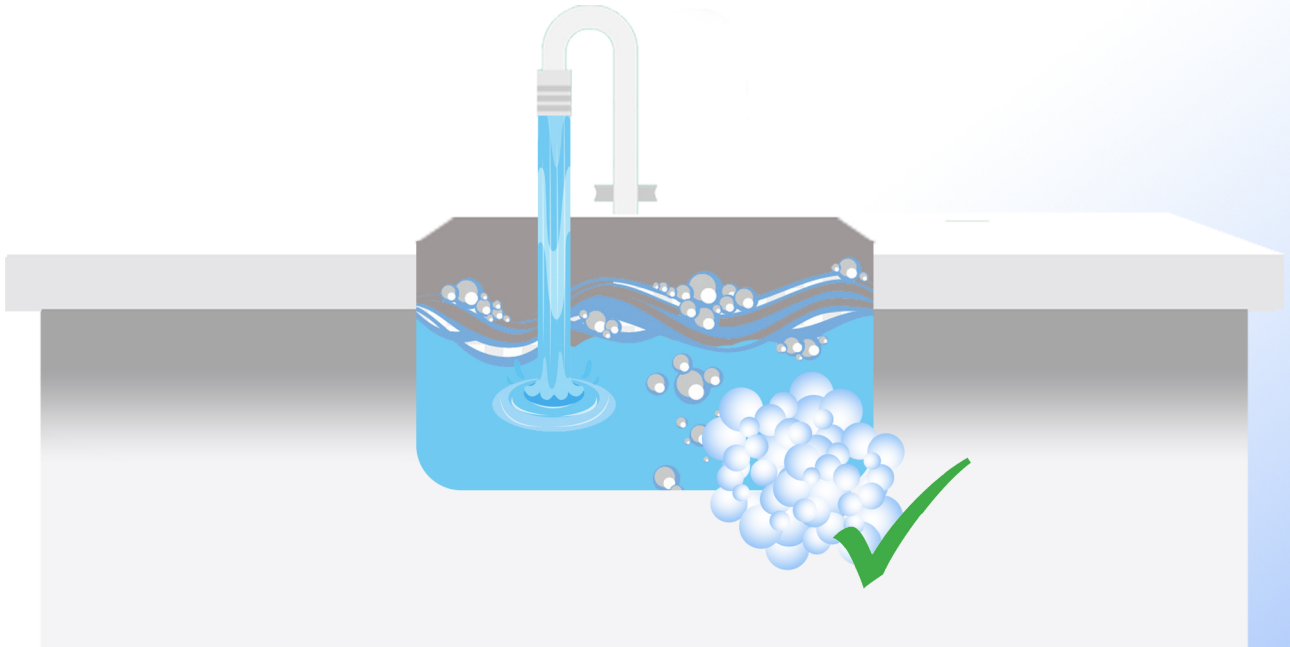
- Avoid placing hot cookware directly into the sink. Allow for the hot cookware to cool off prior to placing into the sink.



- The surface of the sink has good resistance properties to acids, but should not come into contact with alkalis or organic solvents, such as caustic soda, some multi-surface cleaners, bathroom cleaners, bleaches, harsh solvents, burning cigarettes, strong chemicals such as dry-cleaning fluids, paint strippers, acetone, citrus based chemicals, and nail/varnish remover.



- Make sure to not keep any standing water in the sink. This could lead to mineral deposit forming around the bottom of the sink. To remove any mineral deposit, a soapy water solution would be best to remove the mineral deposit.



- To clean the strainer, please remove the strainer basket and bowl. Clean both parts using a brush and a mild dish detergent or soapy water. Rinse the basket and bowl and wipe off with a soft cloth. Insert back into the strainer.

